

# 10KV INTELLIGENT MONITORING WILL NOT AUTOMATICALLY STORE ENERGY



How can a public network monitor a power system? When there is a communications cable failure or a host failure, it also can be detected by portable devices. In this online mode, a public network in a power system is allowed to use authorized departments that can acquire monitoring data from a substation condition monitoring system.



How a monitoring device can realize automatic monitoring? The monitoring devices can realize automatic monitoring by intelligent software systems and software rules procedures. The result of the monitoring system is not determined by the measured absolute value of the parameter but by the changing trend of the measured parameter at any time.



What is intelligent condition monitoring system? Design of Intelligent Condition Monitoring Systems The intelligent condition monitoring system is a large-scale integrated management information system. The departments involved in the condition monitoring system of a real smart substation in Wuxi, Jiangsu Province, are: information center, dispatching, safety monitoring, and operation.



How to monitor transformer status in smart substation? In this condition, the data can be collected, stored, and processed under high automation conditions. The basic procedures of transformer status monitoring in the smart substation are: data acquisition and storage, state analysis, fault classification, fault location based on the experience of intelligent expert system, and maintenance scheme.



Should power equipment condition monitoring system be unified? Although the academia put forward that it is necessary to establish a unified standard to regulate the power equipment condition monitoring system, due to the variety of supervised objects, the differences of user requirements, and divergent technical support platforms, it is difficult to implement in the short time.

# 10KV INTELLIGENT MONITORING WILL NOT AUTOMATICALLY STORE ENERGY



What is the difference between integrated state monitoring system and portable monitoring system? For integrated state monitoring system, the data processing unit is usually far away from the field, so it is necessary to configure a special signal transmission unit. The portable monitoring system is relatively simple, and it only appropriately converts and isolates the signal. Data processing.



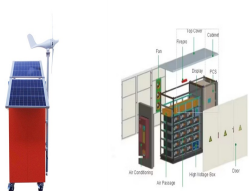
Because of the online monitoring function on voltage, it can monitor the running configuration state of the low-voltage intelligent capacitor in real time. 4. Provide the statistical ???



This paper mainly summarizes the monitoring technology of intelligent substations, the positioning technology of inspection robots, and the multi-sensor control technology to lay a foundation for

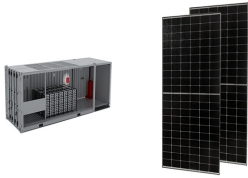


In the contemporary era, the intersection of the Internet of Things and artificial intelligence revolutionizes how industries monitor and optimize their operations. In this work, we present a ???



Intelligent manufacturing as the development direction of the new generation manufacturing system has become a hot research topic. Computer numerical control (CNC) machine tools are the core manufacturing equipment ???

# 10KV INTELLIGENT MONITORING WILL NOT AUTOMATICALLY STORE ENERGY



This paper reviews the current situation and prospect of intelligent monitoring and maintenance of power system, starts from the concept and significance of intelligent monitoring and ???



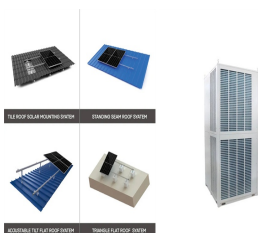
According to the energy-saving need for power distribution station, we design an energy-saving and intelligent control, remote monitoring system. The intelligent system includes central ???



An intelligent ventilation system for dynamic control primarily involves three key steps, including (i) "monitoring", (ii) "prediction" and (iii) "control", as shown in Fig. 1.A very ???



The SH-RS inverters have a wide MPPT voltage operating range from 40V to 560V, while the more powerful 8 & 10KW units offer an impressive 3 or 4 MPPTs, enabling greater flexibility when designing solar arrays. The ???



This paper takes the equipment of a specific project as an example to develop an automatic fault diagnosis and isolation device for 10kV overhead line or cable line when a user has grounding and