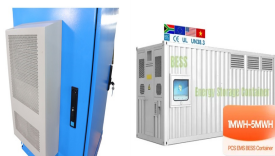


# 10W12V PHOTOVOLTAIC PANELS IN SERIES



Where: 0S-2P means zero panels connected in a Series string, but 2 panels connected together in a Parallel branch. Likewise, 2S-6P means 2 panels connected together in a Series string, with 6 strings connected in a Parallel ???



These solar panel kits for boats contain a 10W Flexi solar panel and a highly efficient EcoEnergy ASC50 marine grade charge regulator. Flexi panels are ideally suited to cloudy UK conditions and are practically unbreakable. In these kits they are teamed with a tough, weatherproof controller with ZERO battery standby power consumption. Flexi panels



The solar module 10w mono from Offgridtec (mpn 3-01-001265) works with monocrystalline solar cells with a high efficiency of >22% and is ideal for 12v systems thanks to its 20v operating voltage.. In Offgridtec mono solar modules ???

## Commercial and Industrial ESS

- Budget Friendly Solution
- Increased Energy Storage
- Modular Design for Flexible Expansion



10W 12V Monocrystalline Solar Panel from Newpowa, \$25.99 with Free Shipping for Domestic Orders (48 States). Corrosion Resistant frame protects a cell efficiency of 21.3% for marine, gate opener, and countless other small ???



The Ameresco 410J is a 10W solar module with 12V nominal power output, making it great for battery charging applications. Other appliances are in remote industrial applications such as telemetry, security sensors and instrumentation systems.



PowerUp BSP-10-12 10W 12V Solar Panel: PDF SPEC SHEET. POWER UP BSP SERIES INDUSTRIAL-GRADE 10 WATT, 12V MULTICRYSTALLINE SOLAR PANEL. Posted by Terry on 17th Oct 2023 I bought this solar panel to replace my original panel on my solar water

# 10W12V PHOTOVOLTAIC PANELS IN SERIES

---

heat collector. It is used to power the solar water circulation pump from the roof panel to the water

# 10W12V PHOTOVOLTAIC PANELS IN SERIES



People living in sunny countries will increasingly live in solar houses or receive their electricity from large solar power plants. Loom Solar 10W, 12V Panel ???1,000 ???100: Loom Solar 20W, 12V Panel ???1,500 ???75: Connecting wires - Solar panels are connected in either Series or parallel connection to make an array, An Array is a



Experience dependable, uninterrupted power with the Moultrie 3.4w or 10w Solar Power Packs. Compatible with Edge Series cameras, USB-C devices and other major camera brands. Continue reading for more information and some frequently asked questions.



ECO-WORTHY this 10W 12V Monocrystalline Solar Panel widely used on small dry camp and off-grid lighting applications. Waterproof IP-65 Rated Junction Box. Advanced water and dust proof level (complete protection against environmental particles and low pressure water jets). Pre-drilled holes on the back of the panel allow for fast mounting and securing. Corrosion-resistant ???



Typically, a good solar panel setup has the balance between voltage and amperage to perform at its best. Therefore it will be a hybrid of both series and parallel connections. Let's go in depth below: Wiring Solar Panels In Parallel. Connecting solar panels in parallel will increase the amps and keep the voltage the same.



SKU SES-10J-V-10W-12V Request Quote. \$114.00 . The SES 10J-V 10W Solar Panel. The SES 10J-V is available with our SES MAPPS Solar Systems. The SES 10J-V 10 Watt solar panel represents over four decades of design, manufacturing, and field-proven performance in our industrial off grid series. With 36 crystalline silicon cells in series, this

# 10W12V PHOTOVOLTAIC PANELS IN SERIES



A 10W solar panel can be used not only for DIY projects but RVs & other vehicles. Let's look at the best 10-watt solar panels to charge 12V batteries. 2.4 Renogy 10W 12V Monocrystalline Solar Panel. 2.5 Solperk ???



Buy 12V 10W Polycrystalline Solar Panel online at lowest price in India with best quality only on ElectronicsComp . Purchase now with Free Shipping and COD option. Flat 10% Off on Prepaid Orders, Apply Coupon GET10 to get ???



The panel is specially designed to charge small batteries up to 7 Ah or 7000 mAh. Loom Solar is India's premium solar brand that sells solar systems including solar panels. The 10-watt, 12-volt solar panel will provide enough power to trickle charge a 12V vehicle or deep cycle battery.



Series Connection of Solar Panels and Batteries with Automatic UPS System ??? 24V Installation. In this solar panel wiring installation tutorial, we will show how to wire two solar panels and batteries in series with automatic UPS/Inverter for 120V-230V AC load, battery charging and direct DC load from the charge controller.. PV panels and batteries are available in the range ???



Absolute interconnected power = 150W + 150W + 150W + 150W = 600W. Having said that when panels are attached in series, one of the panel may carry a rated power below the other panel, because of the lower current spec of this solar panel with respect to the other modules in the chain, that unit could tend to drag down the existing system's output:

# 10W12V PHOTOVOLTAIC PANELS IN SERIES



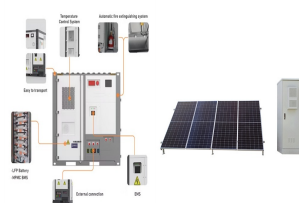
2. Modeling a solar panel as a current-source with a parallel resistor, or voltage-source with series resistor results in a V-I curve with a straight-line from 0,0 and slope of  $1/R$ . This doesn't look anything like a typical solar panel V-I ???



Hi tim, after running the numbers I suggest you wire the 3 identical solar panels in parallel, and then wire that array in series with you 400W solar panel. The setup you suggest would also work but you would end up losing about 40 Watts. The 2nd configuration will minimize those losses to about 23 Watts. I hope this helps.



When the charging current or power of the PV array exceeds its rated current or power, it will be charged at the rated current or power. NOTE: When the PV modules are in series, ensure that the open-circuit voltage of the PV array does not exceed the "Max. PV open-circuit voltage" rating. Otherwise the controller may be damaged. (VOC Don't



For this connection, a string is created by 2 or more panels in series. Then, an equal string needs to be created and paralleled. 4 panels in series needs to be parallel with another 4 panels in series or there will be some serious power loss. You can see more in the example below. There isn't really a downside to series-parallel connections.



The Open Circuit Voltage (Voc) rating of a solar panel, on the other hand, indicates the voltage measured across the panel's terminals under ideal conditions when no load is connected. For example, my solar panel has a Max. Series Fuse rating of 15 Amps. This means that if a fuse is used, whether in a series, parallel, or series-parallel



Solar Module Cell: The solar cell is a two-terminal device. One is positive (anode) and the other is negative (cathode). A solar cell arrangement is known as solar module or solar panel where solar panel arrangement is known as photovoltaic array. It is important to note that with the increase

# 10W12V PHOTOVOLTAIC PANELS IN SERIES

---

in series and parallel connection of modules the power of the modules also gets added.

# 10W12V PHOTOVOLTAIC PANELS IN SERIES



Harga Solar Panel Surya Lipat Portable Charging Board 10W 4 Folding . Rp250.000. Harga SOLAR PANEL 10wp POLY CRYSTALLINE SOLAR CELL PANEL SURYA 10 WATT POLY . Rp110.000. Harga Solar Panel Tenaga Surya - papan Solar Panel 10W polycrystalline. Rp130.000. Harga Paket Hemat Solar Panel 10WP 10 W, Solar Controller 10A & Kabel 2 Mtr. ???



ST-10P-12(010P3002A) utilizes high-efficiency monocrystalline solar cells and the latest solar module production technology. It is widely used in various 12V off-grid applications such as security monitoring, communication systems, pest control devices., etc. Its sturdy aluminum frame, thick back plate, and specialized



The 12v 10W mini Solar Panel has Polycrystalline solar cells which are encased and protected by a durable outer poly frame. This 3v 150mA mini Solar Panel for DIY Projects is light weighted, very strong and weather-resistant substrates or injection ???



Whether a parallel or series connection is better depends on the solar panel's output rating and the power station's input limitation. For something like a 400W rigid solar panel, using a parallel connection for such a ???