

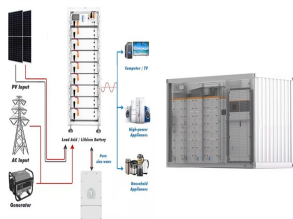
# 1500V SOLAR PANEL



Solar panel manufacturers who want to offer solar panels that are rated at 1500VDC have to change some of the materials (backsheet), spacing of insulating materials, manufacturing processes and testing limits in order to produce solar panels that can be used in 1500V strings. This actually causes a price increase for the 1500VDC rated



JA Solar Technology Co., Ltd. Solar Panel Series DeepBlue 4.0 X JAM78D40-600-625/MB/1500V (Australia CEC). Detailed profile including pictures, certification details and manufacturer PDF Solar Panels Solar Inverters Mounting Systems Charge Controllers Installation Accessories. Battery Storage Systems Solar Cells Encapsulants Backsheets.



JA Solar Technology Co., Ltd. Solar Panel Series DeepBlue 4.0 X JAM54S41-410-435/GR/1500V (Australia CEC). Detailed profile including pictures, certification details and manufacturer PDF Solar Panels Solar Inverters Mounting Systems Charge Controllers Installation Accessories. Battery Storage Systems Solar Cells Encapsulants Backsheets.



You should know that there are limitations for series solar panel wiring. In the U.S., solar strings are required to feature a maximum voltage of 600V, so solar arrays comply with article 690 section 7 of the National a?



" The Truth About Solar Panels-The book that Solar Manufacturers, Vendors, Installers and DIY Scammers Don't Want You to Read" [Paperback and Kindle Edition]. This best selling book in solar category at Amazon Paperback & Kindle Books is packed with more secrets and useful tips about solar panels that will save you a lot of time and money.



V Multifunction I-V Curve Tracer for maintenance and efficiency tests on single-phase installations.. Measurement of efficiency of a single-phase photovoltaic system; Measurement of I-V Curve of a module or of a string up to 1500V/10A - 1000V/15A; Measurement of open-circuit voltage of a

# 1500V SOLAR PANEL

---

module or of a string (VOC) 1500V; Measurement of short-circuit current of a a?|

# 1500V SOLAR PANEL



72-cell solar panel size. The dimensions of 72-cell solar panels are as follows: 77 inches long, and 39 inches wide. That's a 77x39 solar panel; basically, a longer panel, mostly used for commercial solar systems.

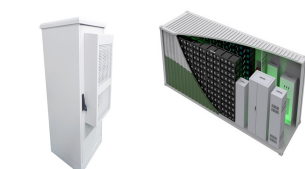
96-cell solar panel size. The dimensions of 96-cell solar panels are as follows: 41.5 inches long, and 63 inches wide.



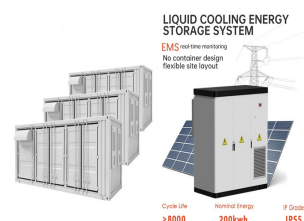
Featuring High-voltage 1500V capability with UL & IEC certification, you can run longer strings with lower balance of system costs and better LCOE. Jinko Eagle 72 HM 410 G2 solar panels include a 10-year workmanship warranty and a 25-year linear power warranty.



JA Solar Technology Co., Ltd. Solar Panel Series DeepBlue 4.0 X JAM54S40-410-435/GR/1500V (Australia CEC). Detailed profile including pictures, certification details and manufacturer PDF Solar Panels Solar Inverters Mounting Systems Charge Controllers Installation Accessories. Battery Storage Systems Solar Cells Encapsulants Backsheets.



The leading solar cell cutting process and multi busbar design with SUNPRO Technology. HIGH EFFICIENCY. N-type components have better reliability and lower LID/LETID attenuation. Efficiency can reach 22.64%. Solar Panels; Sunpro SPDG440-N108M10 Full Black 1500V; Sunpro SPDG440-N108M10 Full Black 1500V. Module Power: 440 W: Cell Type: N a?]



Leading Solar PV Panel Manufacture now in India. Now get BIS Certified Solar System, PV Cells, and Other Solar Products at the best price. Module Authenticity Downloads Speak Up. Home. CEC JAM72D40 555-580 GB 1500V i 1/4 ?2278-1134-30-33mmi 1/4 ? Preview Download. CEC JAM72D42 605-630 LB 1500V Preview Download. CEC JAM72D40 575-600 LB 1500V

# 1500V SOLAR PANEL



WITHSTAND STRONG. Snow load 5400Pa. Wind load 2400Pa. R& D AND PRODUCTION. Advanced production line. The leading solar cell cutting process and multi busbar design with SUNPRO Technology. HIGH EFFICIENCY. Solar Panels; Sunpro SP500-132M10 Full Black 1500V Sunpro SP500-132M10 Full Black 1500V. Module Power: 500 W: Cell Type: P-Type



Features the Megger PVM210 to locate the best spots for solar-panel installations; Versatile Megger DCM340 Clamp Meter suitable for solar and general electrical work; Specialist PV test leads make instruments compatible with vast majority of solar panels



Solar extension cable runs between the solar panel and portable power station or portable solar generator or between two solar panels, allowing for greater space between both items. Like all other Extension Cables, this product allows for greater customisation of your solar power system. Main Features Two (1 red + 1 bl



The JA Solar JAM54D40-440/LB is a 440W premium cell solar panel with a black frame. This n-type Double Glass Bifacial Module is very efficient and operates with extremely low LID. Solar Panels are subject to a GBP150 ex VAT delivery a?|



V Solar Diode Connector has 10A, 15A and 20A. It can compatible with MC4 photovoltaic fuse plug. This connector can compatible MC4 connector. It's easy and quick to assembly, can be used outdoors. As diode only passes current in one direction, so the current from solar panels flows (forward biased) to the battery and blocks from the battery to the solar panel (reverse a?|

# 1500V SOLAR PANEL



Maximized Power Generation. Increased total power output through capturing light from both the front and back of Bifacial solar modules. Back side power gain up to 25% of the front output depending on PV system design. Half-Cut & Multi-Wire Technology. Improved current flow with half-cut technology and multi thin wiring technology allows high module efficiency. It a?|



LG NeON(R) H BiFacial modules use highly efficient bifacial solar cell, "NeON" applied Cello technology. Through the Cello technology, the NeON(R) H BiFacial solar panel can achieve up to 30% more energy than standard PV module. KEY FEATURES. 25 Year Limited Warranty; Bi-facial energy yield; 144 Cell Mono (1500V) Allows for more generation on



SMA America announces the Sunny Highpower PEAK3 125-kW as an ideal solution for ground-mount projects with 480 V AC interconnection. This 1,500 V DC inverter that can connect to the grid at 480 V AC without an a?|



RELATED: How inverters are changing PV systems with bundled services Regardless, the 1,500-volt system is coming. Now, when 1,000-volt panels came to the U.S., BOS components lagged behind for a few years, but this time around, developers looking to install a 1,500-volt large-scale system shouldn't worry as much about component supply issues.



MC4 solar panel cable connectors Use for safe and simple serial connection of solar PV modules, Fits for O2.5-O10MM2 PV solar cables. solar panel cable connectors for 1500V solar system \* Compatible With 200+ Popular Solar Module Connector \* TUV/UL/CE Certified & 15 Years Manufacturing Experience

# 1500V SOLAR PANEL

---



S-Energy SN310P-15 Solar Panel - 310W - 1500V Call Or Email For Availability . The product is in stock. Usually shipps in less than 24 hours. SKU SN310P-15 Request Quote. S-Energy SN310P-15 Solar Panel - 310 Watt. Lower BOS a?|