

# 1MW ENERGY STORAGE POWER STATION

---



In this article, we take a 1MW photovoltaic power generation system as an example to discuss the cost and return on investment of building a 1000 kwh battery and photovoltaic energy storage power station.



Three Gorges Dam in China, currently the largest hydroelectric power station, and the largest power-producing body ever built, at 22,500 MW. This article lists the largest power stations in the world, the ten overall and the five of each type, in ???



In recent years, electrochemical energy storage has developed quickly and its scale has grown rapidly [3], [4]. Battery energy storage is widely used in power generation, transmission, distribution and utilization of power system [5] recent years, the use of large-scale energy storage power supply to participate in power grid frequency regulation has been widely ???



MW Dalian Flow Battery Energy Storage Peak-shaving Power Station, with the largest power and capacity in the world so far, was connected to the grid in Dalian, China, on September 29, and it will be put into operation in mid-October. This energy storage project is supported technically by Prof. LI Xianfeng's group from the Dalian Institute of Chemical Physics (DICP) of ???



The Andasol solar power station is a 150-megawatt (MW) concentrated solar power station and Europe's first commercial plant to use parabolic troughs is located near Guadix in Andalusia, Spain, and its name is a portmanteau of Andalusia and Sol (Sun in Spanish). The Andasol plant uses tanks of molten salt as thermal energy storage to continue generating electricity, ???

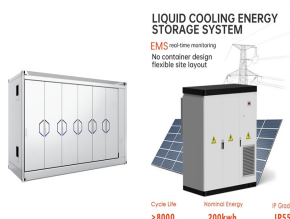
# 1MW ENERGY STORAGE POWER STATION



Large-scale battery storage systems are a critical component in enabling the integration of renewable energy into the grid. In this article, we'll explore the costs associated with 1 MW battery storage systems and what factors contribute to these costs. Key Factors Influencing 1 MW Battery Storage Costs



1. MW (Megawatts): This is a unit of power, which essentially measures the rate at which energy is used or produced. In a BESS, the MW rating typically refers to the maximum amount of power that the system can deliver at any given moment. For instance, a BESS rated at 5 MW can deliver up to 5 megawatts of power instantaneously.



High-capacity systems of over 100kW are called Solar Power Stations, Energy Generating Stations, or Ground Mounted Solar Power Plants. A 1MW solar power plant of 1-megawatt capacity can run a commercial establishment independently. This size of solar utility farm takes up 4 to 5 acres of space and gives about 4,000 kWh of low-cost electricity every day.



A battery energy storage system (BESS) captures energy from renewable and non-renewable sources and stores it in rechargeable batteries (storage devices) for later use. A battery is a ???



Energy storage technology has become critical for supporting China's large-scale access to renewable energy. As the interface between the battery energy storage system (BESS) and power grid, the stability of the PCS (power conversion system) plays an essential role. Here, we present a topology of a 10 kV high-voltage energy storage PCS without a power ???

# 1MW ENERGY STORAGE POWER STATION



In this work we describe the development of cost and performance projections for utility-scale lithium-ion battery systems, with a focus on 4-hour duration systems. The projections are ???



Source: Polaris Energy Storage Network, 3 June 2024. On 30 May, Sungrow Power Supply's Taiyang Phase II 1MW/2MWh vanadium flow battery energy storage project in Taierzhuang was successfully connected to the grid. The design, construction, and equipment of the project were all provided by Enerflow.



The Tesla Megapack is a large-scale rechargeable lithium-ion battery stationary energy storage product, intended for use at battery storage power stations, manufactured by Tesla Energy, the energy subsidiary of Tesla, Inc.. Launched in 2019, a Megapack can store up to 3.9 megawatt-hours (MWh) of electricity. Each Megapack is a container of similar size to an intermodal ???



China Central Television (CCTV) recently aired the documentary Cornerstones of a Great Power, which vividly describes CATL's efforts in the technological breakthrough of long-life batteries. The Jinjiang 100 MWh Energy Storage Power Station that appeared in the video is the first application of this technology. Contemporary Amperex Technology Co., Limited ???



At 11:16 a.m. on December 25 th, 2018, the 50 MW/100 MWh LFP energy storage project of the Luneng National Energy Storage Power Station Demonstration Project, the largest electrochemical energy storage project regarding power generation in China, successfully realized grid-connected power generation. Project introduction The gross installed capacity of the ???

# 1MW ENERGY STORAGE POWER STATION



Energy Storage System: Solar Power: 1MW/1.5MW: Output Voltage: 380V-400V: Certificate: UL/TUV/CE/ISO: Medium and small container energy storage power station system. Large container energy storage power station system. Cell type. LFP48173170E-120Ah. LFP48173170E-120Ah. rated power. ???1 MW.



1MW 2MWh cabinet backup power system. Additional information. Dimensions: 12192x2438x2591mm(480""x96""x102"") Weight: 32T(70548lb) Nominal Voltage: The container of the energy storage station shall be reserved for the installation of a pressure relief port to balance the pressure difference inside and outside the station when



The power station, with a 300MW system, is claimed to be the largest compressed air energy storage power station in the world, with highest efficiency and lowest unit cost as well. With a total investment of 1.496 billion yuan (\$206 million), its rated design efficiency is 72.1 percent,



Fenice Energy's use of 1 MW significantly promotes clean energy solutions. They make the power of 1 MW clear to everyone. They not only showcase their own capabilities but also teach the importance of conserving or generating 1 megawatt of power. In the end, Fenice Energy's smart use of 1 MW highlights their leadership in the field.



The overall 1 MW solar power plant cost is influenced by multiple factors such as the choice of solar panels, inverters, and additional infrastructure required. The cost of a 1 MW solar panel varies based on the brand, quality, and type of panel chosen.. Key Specifications of a 1 MW Solar Plant: Key Components: Solar panels, solar mounting structure, solar inverter, ???

# 1MW ENERGY STORAGE POWER STATION



-megawatt to 200-megawatt-hour independent energy storage station developed by China Huaneng Group Co., Ltd. (China Huaneng) was connected to the power grid on Dec 29, 2021, beginning operation of the world's first 100-MW decentralized-controlled energy storage station.



Today, anyone can set up a solar power plant with a capacity of 1KW to 1MW on their land or rooftops. Ministry of New and Renewable Energy (MNRE) and state nodal agencies are also providing 20%-70% subsidy on solar for residential, institutional, and non-profit organizations to promote such green energy sources. State electricity boards and distribution companies will ???



In 2018, a 100-MW chemical energy storage power station was constructed in the power grid to support peak and frequency modulation in Zhenjiang, Jiangsu. A 60-MW chemical energy storage is being built in Guazhou, Gansu in 2019 to improve the utilization of sufficient local wind power. The construction of two chemical energy storage stations can



Rated Energy Storage. Rated Energy Storage Capacity is the total amount of stored energy in kilowatt-hours (KWh) or megawatt-hours (MWh). Capacity expressed in ampere-hours (100Ah@12V for example). Storage Duration. The amount of time storage can discharge at its power capacity before exhausting its battery energy storage capacity.