

2M LONG PHOTOVOLTAIC PANEL INSTALLATION



£6,800 is the average cost for the popular 4 kW solar panel system in the UK, including installation; Nearly 12,000 solar panel systems are installed across the UK every month; 7.8% of the UK's electricity output in 2023 comes from solar energy, with over 1 ???



Sun-Age designs and produces the most efficient fixing systems for structure on tile roofs, such as the innovative BEE33 UNIVERSAL BRACKET which saves costs and installation times on most tile roofs! We provide ready-to-deliver kits ???



The Solar Access??? system provides a 2m-wide working platform, ensuring effective solar panel installations for various solar energy systems. If more space is required, the system is fully modular and extendable, allowing you to create a larger work area across the front of any building. By combining two or more mobile safe access platforms with the Easi-Dec Catwalk, ???



By being proactive and implementing these strategies, homeowners and businesses can effectively manage and minimize delays during the solar panel installation process. Solar Panel Installation Time by System Size. When it comes to installing solar panels, the size of the system plays a significant role in determining the overall installation time.



See also: Solar Panel Sizes and Wattage: A Comprehensive Guide to Making the Right Choice. How Big Is a 200-Watt Solar Panel? A 200-watt solar panel measures 64.57 inches long by 39.06 inches wide by 1.48 inches deep. Two-hundred-watt solar panels are still quite small, but they can power some houses. They are also perfect for RVs and boats.

2M LONG PHOTOVOLTAIC PANEL INSTALLATION



Many commercial organisations have recognised the huge potential savings created through the installation of commercial solar panels. No matter the size of your business, you can take advantage of your roof space by installing commercial solar panels and enjoy the many benefits renewable energy can bring.



A 4kW solar panel system is suitable for the average home in the UK and costs around £5,000 - £6,000.; The estimated average yearly savings you can expect with a solar panel system range from £440 to £1,005.; If you install a 4kW solar panel system, you will break even on your investment in about 8 years. Since solar panels have a lifespan of about 25 years, you will be ???



There isn't one single answer to the question "How big are solar panels?" but the size of the solar panels you install for residential or commercial solar systems matters. For one thing, solar panel sizes or dimensions, ???



Big solar panel system: 1kW, 4kW, 5kW, 10kW system. These include several solar panels connected together in a system (2 - 50 solar panels). We did a bit of math on solar panel output per sq ft here; on average, you can install 17.25 ???



However, considering that only about 85% of a solar panel's energy capacity is fulfilled, you'd need five 160W panels to meet this 608kWh energy requirement, which would set you back around £1,120. This means it would take 26 months of using your motorhome to break even on your flexible solar panel purchase.

2M LONG PHOTOVOLTAIC PANEL INSTALLATION



A 3kWp solar panel system (comprising seven 430 W solar panels) typically costs around £9,000 in the UK, including installation and VAT. It's a significant upfront investment, but your new solar panel system will start saving you money on your electricity bills immediately, and it will reduce your annual carbon footprint.



Installation: The physical installation of your solar panel system can vary in complexity, but it generally involves mounting the panels on your roof, installing an inverter, and setting up the connection to your home's electrical system. Skilled technicians ensure everything is properly installed and secured to withstand weather conditions.



The best solar panel installers offer 20-30-year product warranties, and at least 10-year long workmanship warranties. Solar panel installation usually takes one to two days, but larger installations ??? over 14 panels ??? can take up to four days. Much of this time is taken up with constructing the scaffolding, so don't be concerned if

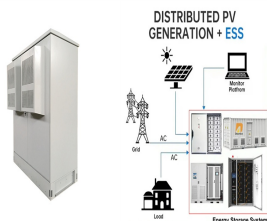


Other Solar Panel System Price Considerations in Malaysia. Maintenance Fees. Those shiny panels typically come with warranties lasting 25 to 30 years, while the trusty solar inverters usually have warranties spanning 5 to 10 years.

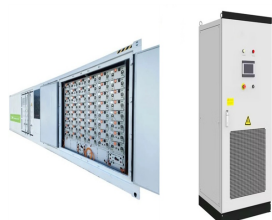


Most solar companies can install a rooftop residential solar panel installation in one to three days, depending on how many panels you're installing and how complicated the installation is. If you're installing a large commercial solar panel system, expect the installation to take anywhere from a week to a couple of months.

2M LONG PHOTOVOLTAIC PANEL INSTALLATION



Some common solar panel system sizes include a 3kW solar panel system, a 4 kilowatt solar panel system and a 5kW solar panels. For instance, a typical 2kW solar panel system suited for 1-3 people will need anywhere between 5 and 8 solar panels (for 350W panels).



6mm² single-core DC cable 2m ??? Black Solar Panel Cable. This is a 2m of long solar panel cable, with no plugs. (PV) systems, and in particular those for installation at Direct Current (DC) side with a nominal DC voltage of up to 1.5kV between conductors as well as between conductor and earth, and not exceeding 800V



Introduction to Photovoltaic Panels Photovoltaic panels, also known as solar panels, are a popular and sustainable source of renewable energy. These panels convert sunlight into electricity, making them an environmentally friendly option for power generation. Installation of a Photovoltaic Panel The installation of a photovoltaic panel with a dimension of 2m x 4m ???

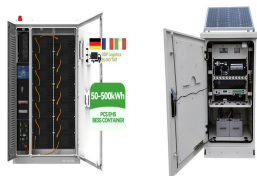


Bifacial solar panels represent a significant advancement in photovoltaic technology, offering the potential to capture sunlight from both their front and rear surfaces. This innovative design can increase energy yield by 5-30% compared to traditional monofacial panels, making them an attractive option for many solar installations. However, to maximize their ???

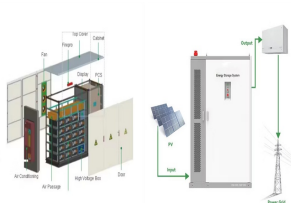


Get a free quote for solar panel installation today. Use your long-handled brush or sponge to gently wipe the surfaces of the panels. then collapse it down to under 2m for easy storage. 6. Remove the water with a rubber squeegee to avoid building up limescale, especially if you're in a hard water area.

2M LONG PHOTOVOLTAIC PANEL INSTALLATION



Many solar panel companies make small solar panels designed specifically for small roofs. You can also opt for high-efficiency solar panels that have conversion rates as high as 23% (compared to the industry average of ???



2M installs solar panels on your home to start saving money today. Eliminate your energy bill and generate clean solar power for decades to come. ?>>? You own your house, you own your vehicle(s) - owning major assets builds equity over a long period.



3.2M Solar Panel Mounting Rail. Quantity The 3.2m Solar Mounting Rail is a great way to install solar panels. Related You May Also Like New. Mounting Rail T Base Bracket For Steel Substructure R 35.00 R 29.00. New. Flat Roof Bracket For 3 Solar Panel . 0 out of 5. New. Mounting Rail Long Hook Bracket for Tile Roof . 0 out of 5. R 110



The mechanical and electrical installation of photovoltaic modules shall be in accordance with applicable Horizontal Installation? 1/4 ?54/60 type PV module cable length ???1.2m, 72 type PV module cable length ???1.4m, 78 type PV module cable length ???1.5m capacity and long-term reliability. Do not repair problematic modules on your own.



Looking to install a photovoltaic (PV) system? Our detailed guide provides step-by-step instructions for pitched, in-roof, and flat roof mounting. China's reduction in photovoltaic export tax rebates may lead to an increase in module ???

2M LONG PHOTOVOLTAIC PANEL INSTALLATION



Relating to: Proposed PV Panel Installation At: XXXX XXXX Report date: XXXXXX. XXXX Allcott Associates LLP JOB REF: XXXX
SF18/v1/28/05/2014 ??? Block A ??? 7.1m wide by 29m long ??? Block B ??? 12.2m wide by 19.4m long In both cases, they comprise a duo pitch roof clad with a trapezoidal-profile metal cladding,



Expect to spend ?5,000 - ?12,000 for solar panel installation in the UK. Discover factors affecting prices and more on MyBuilder. Click to learn more! With the average yearly energy bill savings running between ?150 and ?1,600 Depending on your system's size, solar panels can be a wise long-term investment.



The average 3.5kWp (kilowatts peak) solar PV system in the UK comprises 10 standard 350W panels, each of which measures 1m x 2m (2m?), with this average installation taking up 20m? of roof space (about 4m x 5m).



Suppose, in our case the load is 3000 Wh/per day. To know the needed total W Peak of a solar panel capacity, we use PFG factor i.e. Total W Peak of PV panel capacity = $3000 / 3.2$ (PFG) = 931 W Peak. Now, the required number of PV panels are = $931 / 160W = 5.8$. This way, we need 6 numbers of solar panels each rated for 160W.