

# 2M X 1 2M PHOTOVOLTAIC PANEL



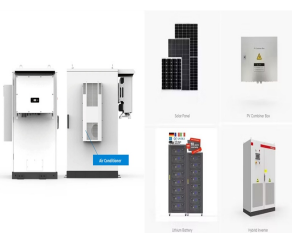
Solar panel output. Solar panel output is measured in watts (w) and each solar panel is rated to a particular output. For example, our solar panels are rated from 5w up to 335w each. The LG Solar Panel 335W Mono Neon2 A5 is one of our most powerful solar panels and can generate 335w. Considering it only measures 1,016mm x 1,686mm, that's a



Due to the size of the area that this solar panel covers (nearly 2m<sup>2</sup>) it is great for large systems where the time and cost associated with fitting a high wattage array needs to be minimised. In order to achieve high output this solar panel uses innovative 5 busbar solar cells, which are more efficient than the 2, 3 or 4 busbar solar cells



The size of these panels can range from 1.6m tall x 1.0m wide, to 1.7m tall x 1.0m wide. Most residential solar panels are 1.7m tall x 1.0m wide (or 1.7 m<sup>2</sup>), with a maximum power output of around 330W. Commercial solar ???



Chamber Sizes Three standard chamber sizes allow you to choose the unit that best fits your solar panels and test quantities. Maximum Panel Size: 0.9m x 1.2m Maximum Panel Capacity: 8 Maximum Panel Size: 1.2m x 2m Maximum Panel Capacity: 12 Maximum Panel Size: 1.7m x 2.2m Maximum Panel Capacity: 20 For more information, see page 5 For more information, ???



Optional Sides: Lightweight or Heavyweight 2 x window, 1 x door, 1 x plain. (can use 1, 2, 3 or all 4 or no sides at all. They interlock with zips and attach to the canopy via Velcro). Contents Of The Box: 1 x Powdered Matt Black Steel ???

# 2M X 1 2M PHOTOVOLTAIC PANEL



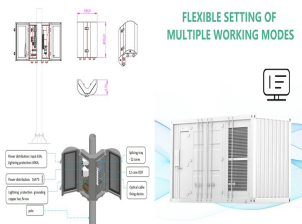
AKCOME portable folding solar panel 2m x 1m color high quality good price mono or poly solar panel 270w. \$0.25-\$0.32. Min. Order: 3000 watts. Previous slide Next slide. Sunpal Monocrystalline Bifacial Solar Panel 2M X 1M Tier1 400W 450W 500W 600W Photovoltaic Panels For Sale. \$0.23-\$0.35.



1.67 A photovoltaic panel of dimension 2mx4m is installed on the roof of a home. The panel is irradiated with a solar flux of  $G_s = 700 \text{ W/m}^2$ , oriented normal to the top panel surface. The absorptivity of the panel to the solar irradiation is 0.83, and the efficiency of conversion of the absorbed flux to electrical power is  $\eta = P/G_s A = 0.553 - 0$



The Solar Access??? system provides a 2m-wide working platform, ensuring effective solar panel installations for various solar energy systems. If more space is required, the system is fully modular and extendable, allowing you to create ???



Typischerweise haben 60-zellige Photovoltaikmodule Abmessungen von 1.767 x 1.041 x 0.035 mm und wiegen 20 kg. Diese Standardmasse sind bei den meisten Herstellern von Modulen mit mono- oder polykristallinen Zellen ?blich. (Jahresstromverbrauch x 1,5) / spezifischen PV-Anlagenertrag / Jahr. Beispiel: F?r einen Verbrauch von 4000 kWh bedarf

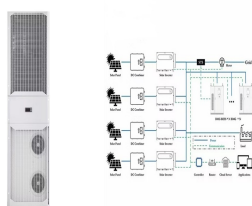


Compact walk-in chambers for testing solar panels. Can be used for PV modules 1.2m x 2m or larger. Performance to meet IEC 61215, 61646, UL-1703. [email protected] +44 (0) 1628 850611. Home; Applications. Automotive; Aviation; Battery cell ???

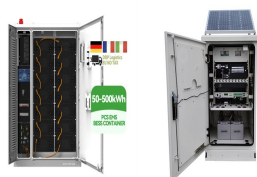
# 2M X 1 2M PHOTOVOLTAIC PANEL



Thermal efficiency in the context of photovoltaic panels refers to the efficiency with which absorbed solar energy is converted into electrical energy. The formula given for the panel efficiency in the exercise is  $\eta = 0.553 - 0.001 \cdot T_p$ , where  $T_p$  represents the panel temperature in kelvins.



GCL (Group) Holdings Co., Ltd. (hereinafter referred to as "GCL Group") is a green and low-carbon technology enterprise guided by the goals of carbon peak and carbon neutrality, with various forms of new energy, clean energy and renewable energy as its main body. Over the past 34 years, leveraging the cutting-edge technology and digital empowerment, ???



For example, a single panel output could be anywhere from 150 to 400 Watts, while all being roughly around the same size (1.5m x 1m). This means that a 4 kilowatt PV system would take up 15m<sup>2</sup> if using 400W panels, ???



Solar cell dimensions are typically around 189 x 100 x 3.99cm (6.2 x 3.28 x 0.13 feet), while solar panel dimensions are usually between 1.6m<sup>2</sup> to 2m<sup>2</sup> (17.22 to 21.53 square feet). The physical size of the solar panel is ???



When it came to solar PV panels (modules) we all used to know where we stood. A solar PV panel was just under 1m wide and around 1.65m long. It had each of its 60 cells were 156mm square. with JA currently in the lead offering the Jumbo Blue at 2.2m x 1.8m and 800Wp. These panels are completely impractical for rooftop applications, but are

# 2M X 1 2M PHOTOVOLTAIC PANEL



Neben dem üblichen Standardmass von ca. 1,7m x 1,1m hat sich bei Solarmodulen eine Zwischengrösse etabliert, die für eine optimale Dachflächenbelegung hinzugekauft werden können. Hier betragen die Modulgrößen etwa 1,35m - 1,47m x 1,00m. Zudem gibt es Anbieter, die spezielle Größen als auch Formen mit z. B. abgeschrägten Kanten herstellen.



Understanding Solar Panels. All types of solar Panels are used to convert solar energy into electricity. Each panel consists of several individual solar cells. Most commonly used solar panels are of 72 cells & 60 cells, which have a size of 2m x 1m & 1.6m x 1m respectively.



RUIZHI Solar Panel Extension Cable, 4mm² 2m Solar Panel Cable, professional solar cable, for Solar Panels, for photovoltaic cable, for solar power station, IP67 waterproof plug (12AWG 2m) : Amazon .uk: Business, Industry & Science



1.2 Metre Wall Panels. Refine by No filters applied. Hide Filters Show Filters Brand Multipanel (52) Perform (26) Size 598mm x 2400mm (44) 600mm x 2400mm (24) 900mm x 2400mm (44) 1200mm x 2400mm



A photovoltaic panel of dimension 2 m X 4 m is installed on the roof of a home. The panel is irradiated with a solar flux of  $G_s = 700 \text{ W/m}^2$ , oriented normal to the top panel surface. The absorptivity of the panel to the solar irradiation is  $\alpha_s = 0.83$ , and the efficiency of conversion of the absorbed flux to electrical power is  $\eta = P / G_s A = 0$ .

# 2M X 1 2M PHOTOVOLTAIC PANEL



How many kWh does this solar panel produce in a day, a month, and a year? Just slide the 1st slider to "300", and the 2nd slider to "5.50", and we get the result: In a 5.50 peak sun hour area, a 300-watt solar panel will produce 1.24 kWh per ???



Buy JA Solar 330W: 1m x 2m (330W 12m x 1m Solar Panel) 1m x 2m length & width online today! JA Solar is one of the world's best solar PV module brands. They maintain the highest quality standards, and unlike most other Tier 1 solar module manufacturers ??? they never outsource their manufacturing. JA Solar has the largest amount of solar modules currently installed in the ???



Over recent years, a battle emerged to develop the world's most powerful solar panel, with many manufacturers developing panels rated well over 600W while others are fast-tracking next-gen large format panels, rated at 700W or higher. (roughly 2m high x 1m wide). Then half-cut cell panels emerged in roughly the same size but with double



If your solar panel system is too. Scroll to content. ???? Cyber The most common sizes for residential applications are 60-cell panels (approximately 1m x 1.6m) and 72-cell panels (approximately 1m x 2m). If you're not sure about the ???



This wonderful solar lighting kit includes 1 x 5w solar panel, 1 x panel bracket, 1 x 10Ah battery hub, 2 x floor lamps, 2 x 3.5w vintage bulbs, 1 x fixing pack and a simple step-by-step guide. These solar cabin lights are suitable for the Woodbridge and Witney summerhouses, and Harwood log cabin.

# 2M X 1 2M PHOTOVOLTAIC PANEL



Mit einer Fläche von 1,95 m<sup>2</sup> und einer Leistung von ca. 420 Watt-Peak ist diese Größe des PV-Moduls gut für das Einfamilienhaus geeignet. Die Rahmenstärke oder Tiefe vom PV-Modul beträgt 30 bis 35 mm. Das Gewicht des gewöhnlichen monokristallinen Solarmoduls beträgt 20 bis 22 kg.



High quality Mono-Si Solar Panel 2m X 1m 11m X 1m 580 X 808 X 35mm from China, China's leading Infinity solar panel 1580 X 808 X 35mm product, with strict quality control Infinity Mono-Si Solar Panel 2m X 1m factories, producing high quality solar panel 1m x 1m products.



1.8m x 1.2m Slatted Fence Panel The KDM Slatted Fence Panel is a stylish and durable fencing solution made from pressure-treated timber. Its horizontal slat design offers both modern aesthetics and balanced privacy. Ideal for gardens, patios, and yards, it's easy to install and maintain. >> Size: 1.8m x 1.2m



Buy JA Solar 330W: 1m x 2m (330W 1.6m x 1m Solar Panel) 1m x 2m length & width online today! JA Solar is one of the world's best solar PV module brands. They maintain the highest quality standards, and unlike most other Tier 1 solar module manufacturers ??? they never outsource their manufacturing. JA Solar has the largest amount of solar modules currently ???



A survey of 4276 randomly selected households showed that 4019 of them had telephones (based on data from the U.S. Census Bureau). Minitab was used to test the claim that the percentage of households is now greater than the 35% rate that was found in 1920.