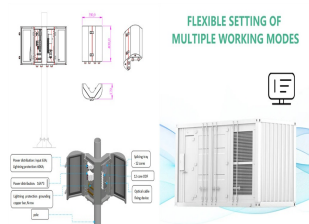


3060 SOLAR PANEL POWER GENERATION



Understanding how these factors affect energy generation can help you make informed decisions about your future solar panel installation. Panel Efficiency: In the UK, solar panels typically have efficiency ratings ranging a?|



The calculation of solar panel kWh is dependent on several parameters that affect overall power generation. The output of a solar panel is commonly measured in watts (W), which represents the theoretical power production under perfect conditions. Manufacturers provide wattage ratings for solar panels, but real-world conditions may result in



The basic unit of a solar PV generation system is a solar cell, which is a P-n junction diode. The power electronic converters used in solar systems are usually DC-DC converters and DC-AC converters. Either or both these converters may be necessary depending on whether the solar panel is connected to a DC load, an AC load or an AC grid.



1. Carefully clamp the solar panel in the boss. 2. Connect the solar panel to the voltmeter. 3. Place the lamp 20 cm from the solar panel. 4. Record the output voltage. 5. Repeat steps 3 to 4 increasing the distance by 20 cm each time, up to 100 cm. 6. Repeat the experiment twice more. Analysis 1. Calculate the mean voltage for each distance. 2.



How much energy does a solar panel produce? As mentioned above, the two main factors that determine solar panel energy output are panel power and sunshine. In the UK, a typical solar panel has a power rating of 350W (watts), and a typical day would have four hours of sunlight. The easiest way to estimate output in kWh is to multiply those



400-watt solar panels that are 20 square feet in size: This is the most frequently quoted panel power output on EnergySage. 1.3 production ratio: This is the U.S. median production ratio, which is the estimated energy output of a solar panel system relative to its actual size in watts

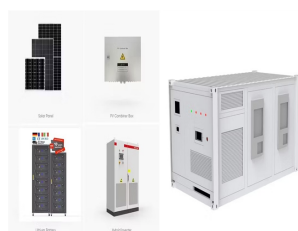
3060 SOLAR PANEL POWER GENERATION

(W).

3060 SOLAR PANEL POWER GENERATION



In the absence of backup power sources like the grid or a generator, the battery bank should have enough energy capacity (measured in Watt-hours) to sustain operation for several days during periods of low input from the solar array. This is the number of days you want the battery bank to provide power without solar panel input. Please



Solar PV generation is higher in the summer than the winter due to longer days and the sun being higher in the sky. Figure 4 shows the typical monthly values of solar PV generation for a 2.35kW solar PV system in London which faced 60 a?]



Solar panels are built to withstand extremely hot weather, which is why there are very productive solar farms located in some of the hottest places in the world. However, solar panels still see a very slight drop in output a?]



authentic solar thermal power stock photos, high-res images, and pictures, Detached house with solar thermal system for hot water and solar panels for electricity generation on the roof, Kiechlinsbergen, town of Endingen, Kaiserstuhl, Baden-Wurtemberg, Germany.



The physical size of the solar panel can impact its power generation, too. Solar panels are made up of solar cells. Most residential solar panels have between 60 and 66 cells, while most commercial panels have at least 72 cells. 72-cell panels have more cells, so there is more a?]

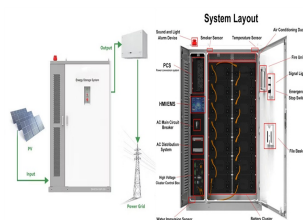


How Can You Connect A Solar Panel To A Solar Generator? Connecting a solar panel to a solar generator is as straightforward as it sounds. You simply plug your portable solar panel's output cable into your solar generator's input port, and it should start charging.. However, when using

3060 SOLAR PANEL POWER GENERATION

third-party solar panels to charge your power station, things can get a bit a?

3060 SOLAR PANEL POWER GENERATION

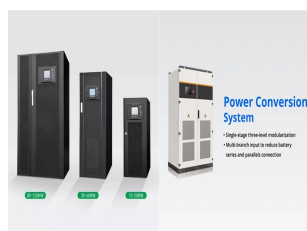


Types of solar panels. The type of solar panels you get can affect electricity output, since some solar panel types are more efficient than others.. A solar panel's efficiency indicates how well it converts sunlight into electricity. The higher the efficiency rating, the more electricity it will produce per square metre. Here's what you can expect from different solar a?|

APPLICATION SCENARIOS



In addition, a comparison is made between solar thermal power plants and PV power generation plants. Based on published studies, PVa??based systems are more suitable for smalla??scale power



Enjoy the freedom of running multiple appliances at once with its 2000w output and 12 outlets with the Patriot Power Generator 2000X. 365 day returns. Best Selling Generator with Included Solar Panel. Silent, fume-free and safe to use inside your home. Worth its weight in gold in a blackout and charges in the sun.



Jackery Solar Generator 1000 Pro, get power on the go with a "more than fast solar generator"! The super quiet solar generator has a long lifespan of 10+ years and can be fully charged within 1.8 hours. Connect the solar panels to the power station in just 1 minute. Far simpler and more convenient than traditional generators. It is also



Like a household solar array, the PV panels a?? which are often separate (sometimes folding) add-ons connected to the generator unit a?? absorb sunlight and convert it into electricity to be used instantly or stored in the a?|

3060 SOLAR PANEL POWER GENERATION



Experience power on the go with our 600W solar generator kit! The R600 portable power station combined with the SP029 100W foldable solar panel ensures efficient energy capture. Perfect for outdoor adventures and emergency backup, empowering your energy independence.



Nearly 30% told us that their solar panels provided between a quarter and a half of the total electricity they needed over a year. There's a huge seasonal variation in how much of your power solar panels can provide. Read our buying advice for solar panels to see how much of your power solar panels could generate in summer.



Solar panels, also known as photovoltaics, capture energy from sunlight, while solar thermal systems use the heat from solar radiation for heating, cooling, and large-scale electrical generation. Let's explore these mechanisms, delve into solar's broad range of applications, and examine how the industry has grown in recent years.



Now you can just read the solar panel daily kWh production off this chart. Here are some examples of individual solar panels: A 300-watt solar panel will produce anywhere from 0.90 to 1.35 kWh per day (at 4-6 peak sun hours locations).; A 400-watt solar panel will produce anywhere from 1.20 to 1.80 kWh per day (at 4-6 peak sun hours locations).; The biggest 700 a?|



The Solar Generator 2000 Pro delivers a colossal charging capacity of 2,160Wh and can be fully charged with 6 SolarSaga 200W solar panels in only under 2.5 hours, and in just 2 hours via an AC wall outlet. Superior BMS guarantees safety and reliability.

3060 SOLAR PANEL POWER GENERATION



Most home solar panels that installers offer in 2024 produce between 350 and 450 watts of power, based on thousands of quotes from the EnergySage Marketplace. Each of these panels can produce enough power to run appliances like your TV, microwave, and lights. To power an entire home, most solar panel owners need 17 to 30 solar panels.. The amount of a?|



Solar photovoltaic (PV) power generation is the process of converting energy from the sun into electricity using solar panels. Solar panels, also called PV panels, are combined into arrays in a PV system. PV systems can also be installed in grid-connected or off-grid (stand-alone) configurations. The basic components of these two configurations



Average Solar Panel Output Per Day: UK Guide. In 2015, the international solar power market was valued at a little over GBP72.6 billion a?? now, it's on pace to be worth over GBP354 billion by the end of 2022. Renewable energy in the UK is still exhibiting strong growth patterns that are on track to continue well into the future for both domestic and commercial use cases.



Charge your secondary batteries easily with the help of this EcoFlow Monocrystalline Silicon Portable Solar Panel with Output for Power Station Generator IP. 400-Watt Monocrystalline Silicon Portable Solar Panel with 48-Volt Output for Power Station/Generator, IP68 (92) Questions & Answers (47) Hover Image to Zoom. Share. Print \$ a?|