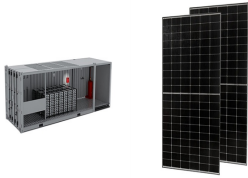


4MM THICK PHOTOVOLTAIC PANEL STORAGE BANK



The second type of panel is the semi-flexible solar panel. These panels are only 3 mm thick and are built on an encapsulated aluminium laminate for thermal stability. The top surface is made of an abrasion resistant ETFE layer. The cable should be multi-stranded and double-insulated. Above this size of solar panel you should use a 4 mm sq



Monocrystalline silicon has to be ultrapure and has high costs because its manufacturing process is very complex and requires temperatures as high as 1,500°C to melt the silicon and regrow it pure; therefore, to keep solar panel costs down, polycrystalline silicon is used, which is less performing but also less expensive, while still being able to guarantee a a?]



The thickest panel (4 mm) only lost 1.1% power output, in contrast to a reduction of 21.8% and 11.74% for the 2.8-mm and 3.2-mm-thick panels, respectively. The 2.8-mm and 3.2-mm-thick panels also showed severe cracks at the point of impact, and both only survived the first impact of the 45-mm hailstone without the glass breaking.



A high-transparency module designed for use in roofs that let light through. Exceptional quality, high yield frameless Glass-Glass panels, ideal for use in conservatories and car-ports. 20 % transparency 4 mm thick safety glass for a a?]



What is solar panel battery storage? Battery storage allows you to keep electricity stored and ready so that you can use it when you need it. Duracell Energy Bank. GBP4,499: 68 x 26 x 61: 96: 3.3kWh: 10 years: You can monitor electricity a a?]

4MM THICK PHOTOVOLTAIC PANEL STORAGE BANK



Why use battery storage with solar panels? Adding battery storage to work in conjunction with a solar panel system allows you to use more of the renewable electricity generated and reduce reliance on the grid. For example, you could store electricity generated via your solar panels during the day to then use at night.



The purpose of storage batteries within solar panel systems is to store excess energy generated during periods of sunlight. Read more about it. Residential. Commercial. 1 Waterhouse Square, London EC1N 2ST . The average solar panel and battery system costs GBP7,000 to GBP10,000.



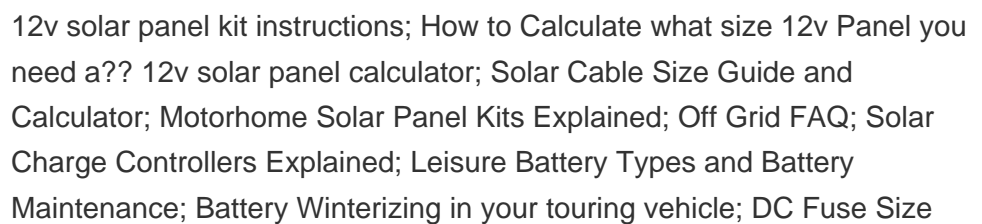
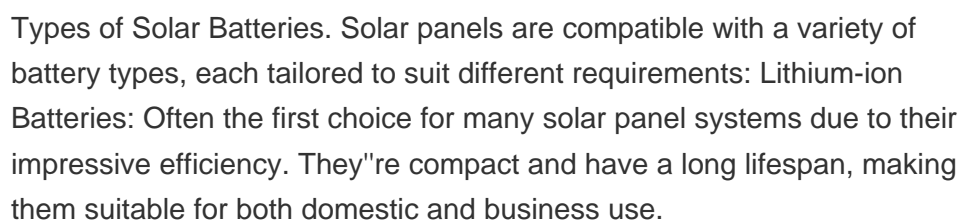
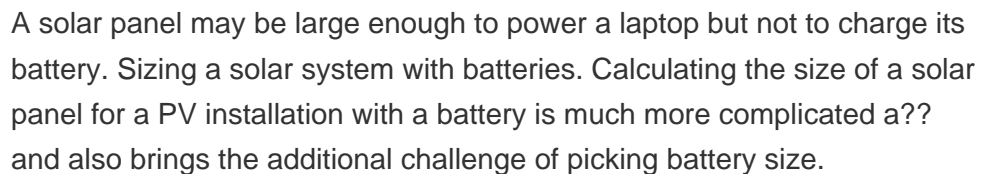
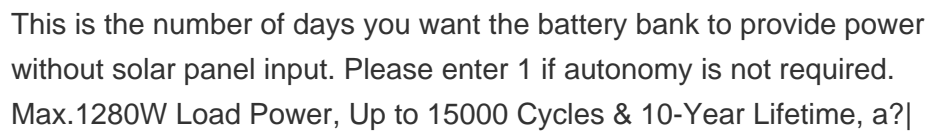
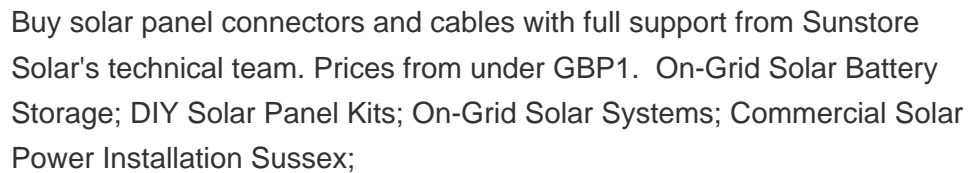
The new solar cell can be applied to almost any surface. Image: Oxford University. Scientists at the University of Oxford have today (9 August) revealed a breakthrough in solar PV technology via an ultra-thin material that can be applied to "almost any building" and deliver over 27% conversion efficiency.



Starting from the heart of your Solar Panel system, SolarEdge offers the industry-leading inverter, providing unmatched efficiency and intelligence to increase your return on investment. However, SolarEdge's 10kWh battery is the icing on top of the cake, the perfect solar partner. New to the UK solar battery market as of 2022, the SolarEdge Energy Bank is a DC-coupled battery a?



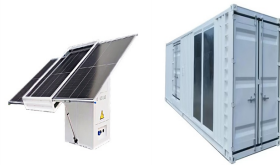
Table 1: Solar panel cable for amp chart for 90°C (194°F) Copper. Amperage tables exist for copper cables reflecting the current carrying capacity of the different gauge cables at different operating temperatures. Temperatures as high as 150°C are considered when selecting cables for wiring up solar panels. As the wire gauge thinner and the



4MM THICK PHOTOVOLTAIC PANEL STORAGE BANK



Background In recent years, solar photovoltaic technology has experienced significant advances in both materials and systems, leading to improvements in efficiency, cost, and energy storage capacity.



Integrating smart home technologies with your residential solar panel and battery storage system can enhance the overall energy management and efficiency of your home. By leveraging the power of automation and connectivity, you can optimise energy usage, improve convenience, and have greater control over your energy consumption.



How do solar panels work? When the sun shines on a solar panel, photovoltaic (PV) cells absorb energy from sunlight and turn it into DC electricity. The current flows into an inverter which converts it into AC electricity (AC electricity is used by most appliances). This electricity is used to power electrical appliances and devices.

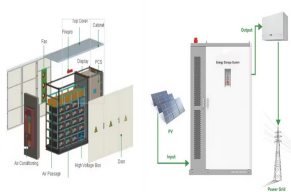


Setting up and maintaining a solar panel battery bank is a crucial step in maximizing the benefits of your solar energy system. A well-designed battery bank allows you to store excess solar power for use during nighttime or cloudy days, increasing your energy independence and potentially reducing your electricity bills. The key to a successful



New to the UK solar battery market as of 2022, the SolarEdge Energy Bank is a DC-coupled battery storage solution, designed to integrate with the existing SolarEdge home PV system. As a scalable solution, when you install a a?|

4MM THICK PHOTOVOLTAIC PANEL STORAGE BANK



4mm Solar PV Cables Coils of 100 meters in black or red outer casing or for large installations meets with the British safety standards Double insulated in one drum. This quality product allows the safe connection of up to 1000v DC voltages from any photovoltaic panel to a proportionally calculated dc isolation switch knowing that this meets with the British safety standards BS7671.



The panels feature thick innovative 5 busbar solar cells, which are more efficient than the 2, 3 or 4 busbar solar cells used in other solar panels, and are able to extract more power from the same surface area. Each solar panel is also fitted with 2 x 1m of 4mm 2 cable with MC4 connectors on the end. 5000W 48V Iconica Hybrid Inverter:



Exquisite is a new collection with a twist of classic designs with the latest colour trends. This exciting new range is suitable for any room in the home. It offers a sense of well being and style at an affordable price. This 4mm thick R10 slip resistant cushion floor comes 2m, 3m or 4m wide, it has a 0.20mm wear layer and an impressive 10 year wear warranty. This product is Hygenic

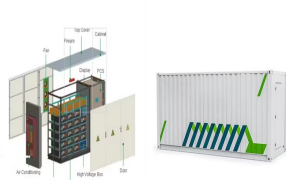


DC-DC converters to run DC appliances designed for one input voltage from a battery bank of a differ. Solar panel mounting kits suitable for boats, caravans and buildings. thick cables unless you make a sound, strong, low-resistance connection at the ends! Some devices, such as our Victron BlueSolar MPPT controller,



The Turnkey price of lithium batteries for the storage of a photovoltaic system is around 900-1,200 euros per kWh. How Long Do Photovoltaic Storage Batteries Last? An important aspect to take into consideration is the autonomy of Photovoltaic Storage Batteries.

4MM THICK PHOTOVOLTAIC PANEL STORAGE BANK



4mm Sq. Single Core Solar Panel Cable a?? DC a?? Black 1,000m. This is a 1,000m Reel. Application TUV approved Solar cable, intended for the interconnection of the various elements of photovoltaic systems such as solar panel arrays.



PV 1-Core 4mm is flexible, halogen free solar cable, suitable for photovoltaic systems. It has a black sheath and is manufactured to meet UK standards, meaning the highest levels of performance are met. The cable has a projected lifespan of 25 years.



A semi-flexible glass solar panel that is extremely robust allowing users to step on it. This 105W panel measures 1018mm x 503mm x 4mm. Chairs & Storage; Towing Accessories; Store Gift Vouchers; Shop all Leisure & Gifts. AAA; AMC; Arada; Baileys; Brasso; NDS LightSolar 105W Black Solar Panel (1018 x 503 x 4mm) Product code: 30947.



Overview: Fastest Charging Large Panel. Experience lightning-fast charging with the EcoFlow 110, a game-changing solar panel that will revolutionize the way you power your devices on the go. This a?|