

# 51ST FLOOR ENERGY STORAGE BUILDING



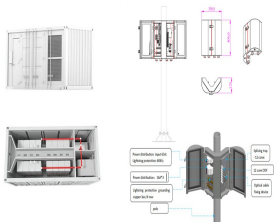
The iconic 7-storey Zero Energy Mid-rise Building (ZEB) and 16-storey Super Low Energy High-rise Building (SLEB) were completed in the first half of 2023. The project adopt approach on advancing and showcasing innovations by setting stretched goals in ???



Sold: 4 beds, 2.5 baths, 2624 sq. ft. townhouse located at 601 51st St SE, Washington, DC 20019 sold for \$475,000 on Nov 3, 2023. MLS# DCDC2100756. Turnkey ready! Meticulously maintained and loved



Lead Performer: Lawrence Berkeley National Laboratory ??? Berkeley, CA Partners:-- National Renewable Energy Laboratory ??? Golden CO-- Georgia Tech ??? Atlanta, GA-- UC Berkeley ??? Berkeley, CA DOE Total Funding: \$3,000,000 FY19 DOE Funding: \$1,000,000 Project Term: October 1, 2018 ??? September 30, 2021 Funding Type: Lab Call Project Objective



But, just as the 51st State is open to many possible solutions for building a clean, efficient. affordable and sustainable energy system from the ground up, the initiative also offers individuals and groups many ways to contribute their ideas and give us ???



Second case study concentrates on the triple zone of a naturally ventilated building. Except on floor surface, all inner walls on the east and west sides of solar glazed building were provided with gypsum???PCM composite wallboard lining. SSPCMs can be used for thermal energy storage in buildings without the necessity for encapsulation. In

# 51ST FLOOR ENERGY STORAGE BUILDING



A Bangladeshi construction worker was found dead under the rubble of concrete that collapsed on the 51st floor of a building under construction at Oxley Tower, Jalan Ampang here early today. According to the Kuala Lumpur Fire and Rescue Department's operations centre, a team was sent to the scene after it received a distress call at 12.23 am s senior operations ???



A continuous and reliable power supply with high renewable energy penetration is hardly possible without EES. By employing an EES, the surplus energy can be stored when power generation exceeds demand and then be released to cover the periods when net load exists, providing a robust backup to intermittent renewable energy []. The growing academic ???



Nagano et al. [51] presented a floor air conditioning system with latent heat storage in buildings. Floor size of the experimental cell was 0.5 m<sup>2</sup>. Granulated phase change material was made of foamed waste glass beads and mixture of paraffin. The PCM packed bed of 3 cm thickness was installed under the floorboard with multiple small holes. The



Each apartment features energy-efficient kitchen appliances designed to reduce utility bills without sacrificing performance. The indulgence of comfort is evident with the inclusion of large closets providing ample storage, while the presence of ceiling fans and custom lighting in each unit adds a touch of personal flair and practicality.



"fifteen hudson yards" ??? the residential tower designed by diller scofidio + renfro in collaboration with rockwell group ??? has topped out in new york. the building which now ???

# 51ST FLOOR ENERGY STORAGE BUILDING



DESNZ's consultation outlined highlighted PHES, compressed-air energy storage (CAES), liquid air energy storage and flow batteries as notable LDES technologies and assessed their duration and round-trip efficiency (RTE), while LCP Delta and Regen's longer analysis included lithium-ion, gravity energy storage, zinc batteries, sodium sulphur

114KWh ESS



In cold climates, electrical power demand for space conditioning becomes a critical issue for utility companies during certain periods of the day. Shifting a portion or all of it to off-peak periods can help reduce peak demand and reduce stress on the electrical grid. Sensible thermal energy storage (TES) systems, and particularly electrically heated floors (EHF), can ???



Walk in Laundry room includes washer/dryer in-unit and plenty of storage. Pet friendly building. Full amenity building featuring 24 hour door staff, outdoor heated pool, 2 outdoor patios with 10 grills, 24 hour fitness studio, and business center. Unit storage located on the 51st floor. Parking located on the 4th floor for additional \$30,000.



Thermal energy storage (TES) is one of the most promising technologies in order to enhance the efficiency of renewable energy sources. TES overcomes any mismatch between energy generation and use in terms of time, temperature, power or site [1]. Solar applications, including those in buildings, require storage of thermal energy for periods ranging from very ???



The consumption of energy storage in the building through PCMs helps achieve net zero goals through a reduction in CO<sub>2</sub> emission [305]. The consumption of electrical energy changes substantially

# 51ST FLOOR ENERGY STORAGE BUILDING



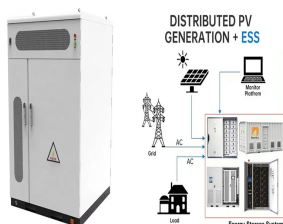
The General Electric Building, also known as 570 Lexington Avenue, is a skyscraper at the southwestern corner of Lexington Avenue and 51st Street in Midtown Manhattan, New York City. The building, designed by Cross & Cross and completed in 1931, was known as the RCA Victor Building during its construction. The General Electric Building is sometimes known by its ???



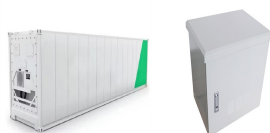
Tuffy is EPS Buildings' solution that combines cold storage and structural elements into one efficient and versatile building system. With a Tuffy building, you can create customized spaces for various applications, from food storage to agricultural purposes, ensuring durability, energy efficiency, and cost savings.



Find your new home at 937 E 51st St located at 937 E 51st St unit S4-45, Austin, TX 78751. Floor plans starting at \$1740. Estimated monthly energy usage for this home. Rooftop Resort-Style Pool State-of-the-Art Fitness Center Two Courtyards with Outdoor Living & Coworking Spaces Bike Storage Clubroom with Kitchen & TV/Gaming Area Multi



Energy Storage North America. . ? 1/4 ? 2025 2 25 - 2025 2 27. ? 1/4 ?. ? 1/4 ? ???



View the lowest prices on storage units at 51st Ave Self Storage on 515 51st Avenue, Phoenix, AZ 85043. Owners . Add Your Facility; Buy & Sell Facilities; Add Your Facility. Call to Book Open Navigation. 1st Floor; 1 left at \$60.00 per month. Continue. 10" x 11" Unit. Climate Controlled, 1st Floor, Interior; \$68.00 per month. Continue. 10

# 51ST FLOOR ENERGY STORAGE BUILDING



The Energy building is supplied by two PLN substations. Every zone (unit of rentable area) is metered separately to enable control of electricity usage for each tenant in the building. The standard lighting in the building utilizes an energy-saving LED.



Whitebox full-floor opportunity with space for 21 offices, 1 board room, 2 conference/meeting rooms, and 6 workstations. Breathtaking views in all directions, including unobstructed views of the Empire State Building. Space-specific 24/7 HVAC. MERV 13 filters. Ability to install bi-polar ionization. In-building access to Grand Central Terminal.



NW 51st Ct, Fort Lauderdale, FL 33309. This space can be viewed on LoopNet. Mezzanine, Security System, Signage, Tenant Controlled HVAC, Energy Performance Rating - A, Storage Space, Air Conditioning; Park Type: Industrial Park Approximately 25% of the building could be converted into fully A/C'd warehouse with ???



Cruachan Dam, Scotland, where Drax has a 440MW pumped hydro energy storage (PHES) facility. Image: Drax. A cap and floor regime would be the most beneficial solution for supporting long-duration energy storage in the UK, a report from KPMG has found. The professional services firm was commissioned to write the report by power generation group Drax.



Energy Star: One Union = 92, Two Union = 90. One and Two Union Square The two buildings total roughly 1,837,920 SF with approximately 19,000 to 22,500 SF floor plates per floor. The two buildings are connected by a fireplace lobby and indoor pedestrian concourse to the neighborhood. we have a three-room conference center on the 51st



The rapid development of economy and society has involved unprecedented energy consumption, which has generated serious energy crisis and environmental pollution caused by energy exploitation [1, 2] order to overcome these problems, thermal energy storage system, phase

# 51ST FLOOR ENERGY STORAGE BUILDING

---

change materials (PCM) in particular, has been widely explored [3, 4].Phase ???

# 51ST FLOOR ENERGY STORAGE BUILDING

---



PCMs work as latent heat thermal energy storage strategies that absorb the excess energy in buildings filling the gap between energy supply and demand. Results showed that the floor's energy storage capacity is greatly enhanced with the benefit of saving water tank's space. 37677.6 kJ was released by the floor for 16 h while the water circulation



Entire 51st Floor, Suite E51; 1 / 25. View All. Floor Plan. Amenities. 24/7 access. Bike storage. Communal lobby space. Furnished. Key card building entry. Lobby attendant. Messenger center. and 56th Street in Midtown Manhattan, New York City. Built in 1991, 712 Fifth Avenue is one of the premier office buildings in the plaza district