

# 56 SQUARE PHOTOVOLTAIC PANEL CABLE



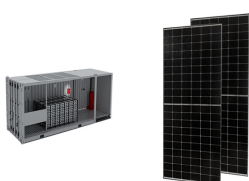
12v solar panel kit instructions; How to Calculate what size 12v Panel you need ??? 12v solar panel calculator; Solar Cable Size Guide and Calculator; Motorhome Solar Panel Kits Explained; Off Grid FAQ; Solar Charge Controllers Explained; Leisure Battery Types and Battery Maintenance; Battery Winterizing in your touring vehicle; DC Fuse Size



RUIZHI Solar Panel Extension Cable, 4mm² 3m Solar Panel Cable, professional solar cable, for Solar Panels, for photovoltaic cable, for solar power station, IP67 waterproof plug (12AWG 3m) 4.7 out of 5 stars 221.



For the connection between the PV square matrix and the square matrix, the rated current of the selected cable is 1.56 times the maximum continuous current in the calculated cable. When sunlight hits a solar panel, the panel converts solar energy into direct current energy, which needs to be processed by a series of electrical equipment



Photovoltaic cables, commonly referred to as PV wire or solar panel cables, are engineered to meet the specific environmental and electrical requirements of solar power systems. These photovoltaic solar panel cables ???



RUIZHI Solar Panel Extension Cable, 4mm² 5m Solar Panel Cable, professional solar cable, for Solar Panels, for photovoltaic cable, for solar power station, IP67 waterproof plug (12AWG 5m) 4.7 out of 5 stars 233.



PV cable is used to connect solar panel together They're suitable for internal and external installations and also connect the solar cells to the inverter or the DC mains cable. Our range of PhotoVoltaic cables be for direct burial or mounted on roofs

# 56 SQUARE PHOTOVOLTAIC PANEL CABLE



Solar panel cables and Accessories. 5 Meter Single Core Extension cable 2.5mm with MC4 Connectors. ?18.00 (Ex ?15.00) 10 Meter Single Core Extension cable 2.5mm with MC4 Connectors. ?23.00 (Ex ?19.17) 5 Meter Single Core Extension cable 4mm with MC4 Connectors. ?22.00 (Ex ?18.33)



DC cables: DC cables link the solar panels to both the battery bank and the inverter. These cables are made to handle strong currents and voltages, making them ideal for solar panel setups. AC cables: AC cables connect the inverter to the electrical panel, which provides power to the home. They are designed to be highly resistant to electrical



An array of solar panels will capture solar energy and convert it into electricity. The flow of charge in the solar panel wires connecting the solar cell is limited by the thickness of the copper wire. The regular solar panel wire is 10 AWG. Use the water flowing in the hose analogy to understand solar panel wiring sizing.



Solar DC cables/wire are designed for connecting photovoltaic power supply systems. They are dedicated to the photovoltaic system direct current (D.C.) side with a nominal D.C. voltage of a 1.5kV. These cables can be used indoor & outdoor for flexible and fixed installations with high mechanical strength in extreme weather conditions.



in a PV system, calculated in accordance with 690.7, shall be provided by the installer at one of the following locations: (1) DC PV system disconnecting means (2) PV system electronic power conversion equipment (3) Distribution equipment associated with the PV system A single field-applied label indicating the maximum DC voltage must be



> 4.0 mm? 56 Strands PV Wire Photovoltaic Cable 2000V. 4.0 mm? 56 Strands PV Wire Photovoltaic Cable 2000V. 4.0 mm? 56 Strands PV Wire Photovoltaic Cable 2000V. When sunlight strikes a solar panel, it generates direct current (DC) electricity. This electricity needs to be

# 56 SQUARE PHOTOVOLTAIC PANEL CABLE

---

conducted efficiently and safely from the solar panels to the

# 56 SQUARE PHOTOVOLTAIC PANEL CABLE



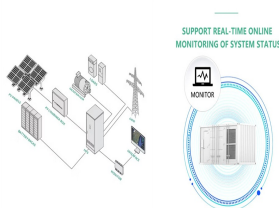
6 Sq mm PV wire solar dc cable is a commonly used solar cable specification, JZD cable provides TUV approval solar cable for many projects around the world, Selling: There is a 3000 square meter warehouse. For inventories, they can be shipped on the same day. Customized products will take 7 working days. 0.6/1V TUV 4MM2 DC Solar PV



What Is a Solar Panel Connector? A solar panel connector is a device used to establish a secure and reliable electrical connection between solar panels. They also link solar panels and other components of a photovoltaic (PV) system, such as inverters, charge controllers, and batteries. Solar panel connectors ensure efficient energy transfer and minimize any power ???



Secondly this cable is manufactured against the latest European Standard EN 50618 and with the harmonised designation H1Z2Z2-K, these Solar Panel DC Cables are specified cables for use in Photovoltaic (PV) systems, and in particular those for installation at Direct Current (DC) side with a nominal DC voltage of up to 1.5kV between conductors as well as between conductor and ???



Definition of PV Wire. PV wire is a unique type of electrical conductor designed for solar photovoltaic systems. It is responsible for linking solar panels with inverters and batteries to enable the safe transfer of electricity. The significance of this wire lies in its capacity to withstand harsh environmental conditions such as high temperatures, moisture content, and ???



In a photovoltaic installation, various types of electrical cables are used to connect the different components of the system and ensure the efficiency and safety of solar energy generation. These are some of the ???

# 56 SQUARE PHOTOVOLTAIC PANEL CABLE



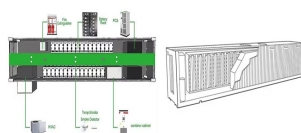
Single core, solar (photovoltaic) cable with a conductor cross-sectional area of 4mm<sup>2</sup> and a nominal current carrying capacity of 55A at 60°C. Manufactured to European standard H1Z2Z2-K with a flexible, stranded, tinned copper ???



It is important to know the common problems associated with solar panel extension cables as these help in ensuring that the systems run smoothly. Some of these issues include unstable connections, physical damages that can be seen and rusting signs among others. In order to fix them, you should check the wires carefully for any defects, make



MC4 ready made cables male/female ends; 4mm Solar cable sold in multiples of 1m; 6mm Solar cable sold in multiples of 1m; 4mm solar cable in 100m coils; 6mm solar cable in 100m coils; 10mm solar cable sold in multiples of 1m; MC4 male connectors; MC4 female connectors; Solar panel in line fuse system; This is essentially used to carry DC



<p>PV 1-Core 6mm is flexible, halogen free solar cable, suitable for photovoltaic systems. It has a black sheath and is manufactured to meet UK standards, meaning the highest levels of performance are met. The cable has a projected lifespan of 25 years. </p>



TYPE PV ??? UL4703 PHOTOVOLTAIC CABLE SINGLE-CONDUCTOR: 2000V ??? RATED 90°C ??? RHH/RHW-2 ??? CSA 1KV RPV-90 4 RATINGS & APPROVALS n UL listed as 2000V Type PV (E322538) n UL listed as RHH/RHW-2 (E76087) n CSA listed as RPV-90 (LL80350) n 90°C Temperature Rating n UL Standard 44/CSA C22.2 No. 38: Thermoset Insulated Wires & ???

# 56 SQUARE PHOTOVOLTAIC PANEL CABLE



Applications of 6mm Solar Cables in Photovoltaic Systems Solar Panels and Solar Power Systems. 6 mm solar cables are commonly used in photovoltaic systems to link up solar panels with one another and the inverter ???



1. Solar Panel PV Wire. It is a well-known solar power wire that is used for connecting cabling in photovoltaic installations. The XLPE cable insulation provides remarkable resistance to ozone, ultraviolet radiation, and moisture, making them highly durable cable appropriate for both grounded and ungrounded solar energy systems. 2. USE-2 Wire



Estimated cable length 12.4m needed for connecting the solar array to the next solar power system unit for the example charge controller. We get calculated that we need a copper wire of 0.128 diameter in inches and a recommended maximum current of 29A defined by choosing solar system voltage.



Single Core Solar Panel Cable ??? DC ??? Black 500m. This is a 500m Reel. Application T?V approved Solar cable, intended for the interconnection of the various elements of photovoltaic systems such as solar panel arrays. Suitable for fixed installations internal and external, within unprotected pipes, or in similar closed systems. The cable is



NO./mm 56/0.30: Rated voltage: DC: 1.8kv AC U. /U: 0.6/1kv with a total area of more than 300,000 square meters and a building area of 230,000 square meters. The actual capital assets exceed 350 million U.S. dollars, and there are 630 employees, including 65 professional and technical experts. We are China XLPE Copper Solar Panels



? 1.56 Ex. VAT ? 1.87 Inc. VAT: 501+ 4mm Black PV Solar Cable. Suitable for use indoor or outdoor for connection between solar panels or between panels and inverter instruction : Flexible tinned copper conductor, LSZH insulated, LSZH sheathed. Operating Temperature : -40degC to

# 56 SQUARE PHOTOVOLTAIC PANEL CABLE

---

+105degC, 20000 hours @120degC

# 56 SQUARE PHOTOVOLTAIC PANEL CABLE

---



1x2.5mm 1x6mm PV Solar Panel Cable \* 100% tinned cooper minimizes power loss in your solar panel system. \* It has good flame retardancy, weather resistance, uv resistance and temperature resistance. \* xlpe/xlpo low-smoke halogen-free insulation provides great ???



This precut and prestripped 9in12AWG Solar Cable can be used immediately with other solar panel components and accessories. The cable is sunlight and UV resistant and IP65 protection. Free Shipping! The Adaptor Kit includes male and female connectors on one end for effortless connection to the solar panel, and exposed wire on the other end