

# 800W PHOTOVOLTAIC PANEL TEST METHOD

---



What is a standard test condition for a photovoltaic solar panel? The standard test conditions, or STC of a photovoltaic solar panel is used by a manufacturer as a way to define the electrical performance and characteristics of their photovoltaic panels and modules. We know that photovoltaic (PV) panels and modules are semiconductor devices that generate an electrical output when exposed directly to sunlight.



What are the test conditions for PV panels? The three main elements to the standard test conditions are ???cell temperature???, ???irradiance???, and ???air mass??? since it is these three basic conditions which affect a PV panels power output once they are installed.



What are the electrical ratings on solar panel datasheets? International standards have been developed to do just that, and the electrical ratings displayed on solar panel datasheets follow these standards. Standard Test Conditions (STC) are the industry standard conditions under which all solar PV panels are tested to determine their rated power and other characteristics.



What is the power rating of a photovoltaic panel? For example, 100 WDC. This power rating and therefore the performance of a photovoltaic panel is presented according to defined international testing criteria. Known as (STC). Then when a panel is advertised as having a capacity of say, 400 Watts-peak, this is the power output it will produce under STC conditions.



What are solar panel power ratings & voltages? This chart tells us that all those solar panel power ratings, voltages, and currents are measured at: Solar irradiance of 1,000 W/m<sup>2</sup>. In the real world, we get 0 W/m<sup>2</sup> at night and up to about 1,500 W/m<sup>2</sup> on a very sunny day without clouds. Cell temperature is held constant at 25°C (77°F). Air mass coefficient is 1.5.

# 800W PHOTOVOLTAIC PANEL TEST METHOD



Do solar PV panels have electrical ratings? Solar PV panels come in a variety of different technologies and sizes, so it is important to be able to compare them fairly to one another. International standards have been developed to do just that, and the electrical ratings displayed on solar panel datasheets follow these standards.



Total Batteries Capacity (Ah) = Total Power Generated During Day (Wh) / ( Battery Voltage (V) x DOD% ). Total Batteries Capacity (Ah) =  $4036.89\text{Wh} / (24\text{V} \times 0.5)$  Total Batteries Capacity (Ah) = 336.41Ah. So this means that I have to have a battery bank of capacity 336.41Ah of type lead acid and a total voltage of 24V to be able to store all the gathered solar ???



Whether you want to optimize your solar panel system or evaluate the performance of a potential purchase, the EY800W Solar Photovoltaic Panel Tester is the perfect tool for the job. This ???



Shop SolaMr 800W Upgrade Solar Panel Tester MPPT Photovoltaic Multimeter with Ultra Clear LCD, Smart MPPT Open Circuit Voltage Troubleshooting and Data Testing for Solar PV Testing -EY 800W. Free delivery on eligible orders of ?20 or more. It has a built-in automatic and manual MPPT detection system to test the maximum power point and open



Based on the review, some precautions to prevent solar panel related fire accidents in large-scale solar PV plants that are located adjacent to residential and commercial areas. The structure of a

# 800W PHOTOVOLTAIC PANEL TEST METHOD



???MPPT TEST METHOD???This solar panel tool with manual & automatic MPPT test method. When the [AUTO MPPT] test button is pressed, the multimeter will automatically adjust the test interval time according to the current power value and refresh the digital display. When the [manual MPPT] is pressed, it starts scanning the maximum power point



The main goal of Part 1: Test requirements in the latest 2021 overhauling IEC 61215-1:2021 document titled "Terrestrial photovoltaic (PV) modules  
??? Design qualification and type approval" is to answer the following 3 specific questions:



Producto - Nombre de estilo UT673PV???WELL-BUILT 800W  
TESTER???Our latest solar panel tester makes measuring panels under 800 watts and 60 volts effortless. With a large LCD screen for clear readings even in bright sunlight and a single display showing all essential values, work becomes super-efficient. Lightweight and portable, its the perfect companion for anyone in the ???



Photovoltaic Panel Multimeter, EY800W Solar Panel Tester, for Photovoltaic Panel, with LCD Display, No Battery Required Specifications:  
Model: EY800W. Power: 5-800W Current: 0-35A Voltage: 12-60V  
Certification: CE. How to use: When the automatic test button is pressed, the instrument automatically adjusts the test interval to the current power value and ???



The solar panel multimeter accurately measures your solar panels peak power point and open circuit voltage. Plus, it's energy-efficient and doesn't need extra power. PRODUCT FEATURES AUTO MPPT detection Manual MPPT detection Over-voltage, over-temperature, over-current protection Solar panel reverse connection protecti

# 800W PHOTOVOLTAIC PANEL TEST METHOD



This solar panel multimeter can test the maximum power point and open circuit voltage of photovoltaic panel. The photovoltaic panel power supply method is more energy-saving and does not require additional electricity. The difference between these two types is the power of EL400B is 0.1-400W, the power of EY800W is 5-800W. The current



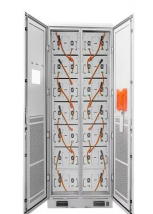
Maximum power test (Pmax) 5? 1/2 ?800W; Peak power voltage (Vmp) 12? 1/2 ?60V Large screen and multiple result display; No batteries needed, powered by the solar panel; Equipped with MC4 test lead; Portable and convenient; Download Datasheet . Additional information. Brand: UNI-T. STEP 1: Choose Delivery Method: Delivery. Related products. Canadian



Buy UT673PV Solar Panel Tester, Photovoltaic Multimeter 800W, Smart MPPT Open Circuit Voltage Troubleshooting, Data Test for Photovoltaic Modules . Brand: ChezMax. 4.8 4.8 out of 5 stars 5 ratings | Search this page . \$88.99 with 11 percent savings -11% \$ 88. 99. elejoy Solar Panel Tester 800W- Measure MPPT Power Output Rating, Open



800W Monocrystalline Solar Panel, Flexible 4x200W Solar System Kit, 42.6IN\*11.5IN\*0.11IN Standard test conditions: irradiance 1000w/m2, temperature 25???, AM=1.5 Package Amazon Payment Methods. Instalments by Barclays; Amazon ???

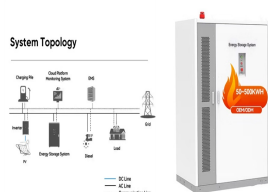


generator set silent type 5kva. watt meter and power analyzer. bosca solar panels 500 watts. rtk gps surveying instrument. power central official store. SOLAR PANEL MULTIMETER. Model: EY800W. Original ELEJOY factory. Independent research and development. Patented chip. Product function: This solar panel multimeter can test the maximum power point and open ???

# 800W PHOTOVOLTAIC PANEL TEST METHOD



800W Solar Panel Tester, MPPT Photovoltaic Panel Multimeter Monitor  
MPPT Watt Voltage Amp with Clear Backlit LCD Display, Solar Power  
Tester with MC4 Connector Backlit and Alligator Clip Included  
????,?Multi ???



The so-called "primary method" to determine NOCT is an outdoor  
measurement method used by both IEC 61215 and IEC 61646, and is  
universally applicable to all PV modules. In the case of modules not  
designed for open ???



FROGBRO Solar Panel Tester Photovoltaic Panel Multimeter Upgrade  
Style EY800W with Ultra Clear LCD Display, Smart MPPT Tool for Open  
Circuit Voltage Fault Finding and Solar panel PV testing (LCD 800W) :  
Amazon .uk: DIY & Tools. When pressing the test button [AUTO MPPT],  
the multimeter automatically adjusts the test interval time to the



Photovoltaic thermal (PVT) modules convert solar energy into electricity  
and heat. Unlike that of normal photovoltaic modules, the nominal  
operating cell temperature (NOCT) of PVT modules, which is used to  
evaluate the temperature and electrical power output, is unknown because  
it depends on the mass flow rate and inlet temperature of the working fluid  
???



The process of using Standard Test Conditions involves subjecting a solar  
panel to specific conditions to determine its power output and efficiency.  
The process is methodical and meticulous, involving careful control ???

# 800W PHOTOVOLTAIC PANEL TEST METHOD



800W Flexible Monocrystalline Solar Panel 4X 200W, Portable Solar Panel Module kit with Controller 40A, 18V PET Portable Solar Panel Suitable for Rv, Outdoor, Tent, Caravan ? 1,652.67 ? 1,652 . 67 FREE delivery 23 Sept - 3 Oct



The standard test condition for a photovoltaic solar panel or module is defined as being 1000 W/m<sup>2</sup> (1 kW/m<sup>2</sup>) of full solar irradiance when the panel and cells are at a standard ambient temperature of 25 °C with a sea level air mass (AM) of 1.5



Designed for measuring voltage, current and power of connected PV solar panels up to 800W. This meter provides instant feedback on PV system operation and allows optimal placement of solar panels for maximum energy conversion. Includes croc clip test cables, MC4 test cables and carry case. Information & Downloads. Altronics Code: Q0967; I/N



EY800W solar panel tester help you to analysis photovoltaic panel performance and find out proper angle/place for solar panel position smartly. Supports over rated power/temperature voltage/current and Reverse Protection.



Voltage: 12-60V. EL400B: 0.1-400W/0-20A. EY800W: 5-800W EY800W: 0-35A. Item Size: 16580 30mm 6.50 3.15 1.18in. This solar panel multimeter can test the maximum power point and open circuit voltage of photovoltaic panel. The power supply method of solar panel is more environmentally-friendly and energy-saving, and it requires no additional



Power: 800W /600w / 400w / 300wis\_customized: Yes Certification: CE Certification: weee Description: 800W 600W 400W 300W Glass Solar Panel Photovoltaic Panel Solar System balcony power plant grid tie inverter for Home Socket 220v 230v Micro Inverter On Grid Solar PV

# 800W PHOTOVOLTAIC PANEL TEST METHOD

---

System Package of list of "800w plug and play" 4\* 200w glass solar  
panel1\* 600W 220V 230V ???

# 800W PHOTOVOLTAIC PANEL TEST METHOD



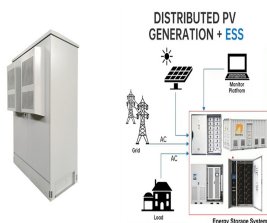
About this item . UPGRADED EY-1600W: Compared to the previous generation, our exclusive new EY1600W can double the maximum test power. You can use it to test any 5-1600W single solar panel or parallel solar panel combination (Note: due to the combination of solar modules in series, the current can exceed 60A, so combinations in series and over 60A ???



Key Factors Affecting Solar Panel Performance: a. Sunlight: The amount and quality of sunlight received by solar panels are pivotal factors influencing their performance. The angle at which the sunlight strikes the panels, its intensity, and duration all impact energy production. Tracking the sun's path throughout the day and seasons is



UT673PV Solar Panel Tester, Photovoltaic Multimeter 800W, Solar MPPT Meter with Large Ultra Clear LCD, Smart MPPT Open Circuit Voltage Troubleshooting, Data Test for Photovoltaic Modules Please disconnect from the power grid for solar panel test. The Meter does not apply to tests in the measurement category "CAT II or above". 2. The



w Solar Panels Features. Leeline Energy is your one-stop solution company for solar panels. We deliver 800w panels with the following features: High-efficiency solar cells. High-end replaceable fuse, DC contact material, and cylindrical PV fuse offer longer lifespans. Anl fuse COMPONENTS comes with an array inline fuse.



Solar Panel Tester 800W, Smart MPPT Open Circuit Voltage Troubleshooting Tool for Solar PV Testing By continuing, I agree to the cancellation policy and authorize you to charge my payment method at the prices, frequency and dates listed on this page until my order is fulfilled or I cancel, if permitted. With the "Auto MPPT" test button