

A KIND OF ENERGY STORAGE MOTOR CORE



Removal stator core for simple stator replacement; Our medium power induction motors" frame and stator have been specially developed to offer a highly efficient cooling, then allowing higher power ratings with smaller frame ???



Flywheel energy storage (FES) is a kind of physics energy storage method exploiting a rotational block with kinetic energy that changes with the rotational speed varying [2,3]. The speed-increasing flywheel stores energy ???



Thus, this paper proposes a multiport power conversion system as the core of a hybrid energy storage system (HESS), based on Lithium-ion (Li-ion) batteries and supercapacitors. while the ICE



Mohammad Imani-Nejad PhD "13 of the Laboratory for Manufacturing and Productivity (left) and David L. Trumper of mechanical engineering are building compact, durable motors that can operate at high speeds, making devices ???



The invention relates to the car EPS (electric power storage) motor controller field, in particular to a car EPS motor controller. The car EPS motor controller comprises an electronic control unit ???

A KIND OF ENERGY STORAGE MOTOR CORE



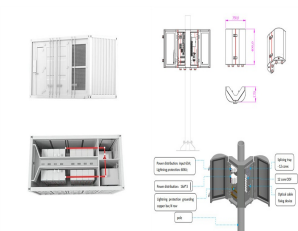
Fig. 1 shows the configuration of the energy storage device we proposed originally [17], [18], [19]. According to the principle, when the magnet is moved leftward along the axis ???



Electric Motors, Generators, and Transformers. As we learned previously, a current-carrying wire in a magnetic field experiences a force???recall $F = I \cdot B \sin \theta$, $F = I \cdot B \sin \theta$. Electric motors, which convert electrical energy ???



The rest of this article is organized into the sections below: Introduction, Configuration of HEV, Electrical motors in EV and HEV, Energy storage systems, Charge equalization of the supercapacitor, and Energy ???



Flywheel energy storage is a kind of energy-storing device utilizing physical interconversion between electric energy and mechanical energy (kinetic energy). It is mainly composed of auxiliary devices including flywheel, flywheel ???



As a bidirectional energy storage system, a battery or supercapacitor provides power to the drivetrain and also recovers parts of the braking energy that are otherwise dissipated in conventional ICE vehicles. ???

A KIND OF ENERGY STORAGE MOTOR CORE



The predominant concern in contemporary daily life revolves around energy production and optimizing its utilization. Energy storage systems have emerged as the paramount solution for harnessing produced energies ???



One motor is specially designed as a high-velocity flywheel for reliable, fast-response energy storage???a function that will become increasingly important as electric power systems become more reliant on intermittent energy sources ???



,? 1/4 ?motor core, ,,???? 1/4 ?? 1/4 ?,,??? ???