

A SET OF PHOTOVOLTAIC PANEL COMBINER BOXES



3 ? 1) What is a PV Combiner Box? "A solar combiner box or PV combiner box is a device that is used to minimize the number of connections made in a solar panel system for easy integration and improving system management.". ???



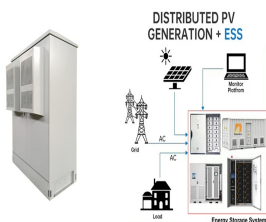
The physical box in which the combiner components are installed is the enclosure. A terminal strip. It is similar to a busbar, although it is usually constructed of ABS composite instead of metal. Rapid Shutdown ???



This makes it possible to connect more than one solar panel to a single inverter or charge controller. A solar combiner box typically contains fuses or circuit breakers for each input circuit, as well as an output terminal for connecting to the inverter or charge controller. There are two main types of solar combiner boxes: string and parallel.



AnkEnergy IP66 Solar System Solar combiner box 32A PV DC Isolator Switch with Solar Connector for Solar Power System These combiner boxes are the all-around components used in both commercial and home solar power systems. With 32A DC disconnect switch and 1000V Dc isolation feature, they offer safe integration in systems comprising solar inverters.



When the current in the photovoltaic string exceeds the set value, the combiner box will automatically cut off the current to protect the photovoltaic module and related equipment from damage. Communication function : Some advanced combiner boxes also have a communication function, which can be connected to a monitoring system or a data acquisition system to ???

A SET OF PHOTOVOLTAIC PANEL COMBINER BOXES



Wiring diagram for a PV combiner box. A PV combiner box is an essential component of a solar photovoltaic (PV) system, allowing multiple PV strings to be connected and combined into one output. The wiring diagram for a PV ???



Monitoring and detaching outdoor string combiner box, a Solar Combiner Box is built for optimum performance and utmost safety. One can take advantage of the Combiner Box's high level of system performance monitoring ???



At its core, a solar combiner box is a vital component of a solar photovoltaic (PV) system responsible for consolidating and distributing the electrical output from multiple solar panels. This junction box, typically weatherproof and designed for outdoor installation, acts as the central hub where the direct current (DC) power generated by solar panels comes together ???



String Combiner Boxes. A string combiner box is used when you have several strings of solar panels. A "string" is just a series of panels connected. Key Factors to Consider When Choosing a Solar Combiner Box ???



PV Combiner Boxes: Organizing Solar Connections PV combiner boxes play a crucial role in solar installations, efficiently organizing and protecting the connections between solar panels. These boxes consolidate multiple strings of panels into a single output, simplifying maintenance and enhancing system performance. Discover the benefits and key considerations of PV combiner ???

A SET OF PHOTOVOLTAIC PANEL COMBINER BOXES



In a photovoltaic system, a combiner box acts as a central hub that consolidates and manages the direct current (DC) output of multiple solar panels. Its main purpose is to simplify the wiring structure, enhance system security and ???



Solar photovoltaic array combiners, also called "solar panel combiner boxes," are often used to connect several solar panels (or strings of panels) to a single bus. It makes it possible to replace or add panels to ???



This is where your solar combiner box, or PV combiner box, comes in. A solar panel combiner box combines the outputs of all your inverters, or your strings. These feed into the box, turning the electricity into a single circuit. Out of that box comes a single wire you can connect to ???

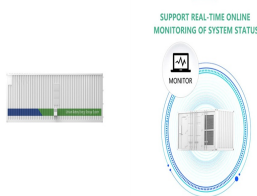


A PV combiner box is the key to housing a joint connection between various panels and the entire system's inverter. Think of this box as the heart of a seamless solar energy solution. What is the Purpose of the PV Combiner Box? Photovoltaic combiner boxes play a crucial role in solar panel systems, especially in larger installations. They



PV Next combiner box - Compact Modular design Flexible connection variants Online selection guide The sealing set that is included covers both possibilities. Protects all demands. From 2IN, over 2MPPT up to 6MPPT or 6IN-1OUT up to 6IN-6OUT - we can now protect every need with our boxes. PV Next combiner boxes are tested according to IEC

A SET OF PHOTOVOLTAIC PANEL COMBINER BOXES



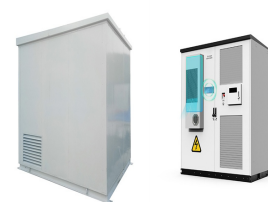
PV DC combiner boxes are tested according to IEC-61439-2 and are constructed on the basis of the test results as well as assembled for the specific application. This ensures that each of the requirements of the target application is fully met. Operating Instructions PV DC Combiner Box - EN. 1.9 MB. Operating Instructions Operating



Would a small combiner box double my amps if I attached two strings of solar panels in series? but combiner boxes have only one hot leg being the positive out..so i'm guessing yeahof course each breaker must be same voltage. (OCPDs - Fuses or Breakers) to the solar panel array and what diysolarforum 7. 740GLE Solar Wizard



Practical Application and Safety Components of Photovoltaic Combiner Boxes In the evolving landscape of renewable energy solutions, photovoltaic (PV) systems play a pivotal role. Central to these systems is the photovoltaic combiner box, a critical component designed to streamline the efficiency and safety of solar arrays. This article explores the use scenarios of ???



Also, some combiner boxes will monitor equipment so you can be alerted if there's an issue. These devices also require little maintenance as they only require infrequent checking for leaks and loose wiring connections. Components of a PV Combiner Box. A typical PV combiner box has several essential components, such as:



A solar power combiner box is a device that combines . Phone: (512) 539-9402 is simply a electrical component for combining and housing the solar power cables coming from your solar panels. Combiner boxes are usually made of sheet metal, plastic or fiberglass. Multiple strings of solar panels are combined in the box and then a single

A SET OF PHOTOVOLTAIC PANEL COMBINER BOXES



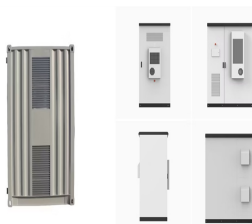
Solar combiner boxes are a fundamental component in photovoltaic (PV) systems, designed to streamline and safeguard the electrical system within a solar power setup. These devices play a crucial role in managing the energy output from multiple solar panels, making them essential for both residential and commercial solar installations.



In a photovoltaic system, the modules are arranged in strings and fields depending on the type of inverter used, the total power and the technical characteristics of the modules. ABB offers a plug & play solution that accommodates overcurrent protection devices, disconnectors and surge protective devices (SPDs) in one solar combiner box.



In combiner boxes, circuit breakers are normally single-pole, meaning they have only one set of contacts for use with a single incoming cable. Fuse. But in the end, high solar panel wattage defines the gap between the best solar backpack and the rest. The 8 Best Solar Backpacks at a Glance
Gosun Solar Powered Backpack ??? Multiple



The PV Combiner Box is usually installed between the PV array and the inverter, and is an important part of the PV power generation system. ???
What Does a PV Combiner Box Do? The role of the PV Combiner Box can be illustrated by a specific example: Suppose you are building a photovoltaic power plant, which consists of 500 photovoltaic panels.



What is a Photovoltaic Combiner Box? A photovoltaic (PV) combiner box is a crucial component in solar panel systems. It aggregates the output of multiple solar panels, enabling a streamlined connection to the inverter. This box plays a key role in consolidating the energy collected, providing protection, and ensuring the efficient operation of

A SET OF PHOTOVOLTAIC PANEL COMBINER BOXES



The PV combiner box is a complete set of devices to ensure the orderly connection and convergence of PV strings in the PV power generation system. Generally equipped with surge protectors, leakage protectors, isolation switches, fuses, etc., it provides isolation, leakage and grounding protection, ensures that the PV system is easy to cut off



Potential Issues Without Pre-Grid Connection Inspection of Combiner Boxes:. Abnormal Open Circuit Voltage: Excessive string voltage due to connecting too many PV panels, raising the combiner box voltage above the system's rated voltage, can degrade internal component performance over time, leading to component breakdown or even fires.



A solar combiner box is generally identical to an electrical junction box which houses several wires and cables and joins those connections tightly through different ports of entry. As the name suggests, you use the solar combiner box to bind multiple strings of photovoltaic (PV) modules into one standard bus. The fibers are subsequently attached to the ???