

ABB LOAD SWITCH CANNOT STORE ENERGY



Does ABB offer sustainable switchgear? ABB has been offering sustainable switchgear since 2013, supporting its customers in their efforts to reduce their impact on the environment. AirPlus is a fluoroketone-based gas mixture, with a 99.9 percent lower GWP compared to SF 6.



Can battery energy storage systems support the grid? Battery Energy Storage Systems (BESS) can be applied to support the grid and help solve these issues created by increased penetration of renewable energy. In the public eye, integrating renewable energy onto the utility grid may seem like an easy decision to make.



Does ABB provide a warranty on a reference design? formation or advice given by ABB or ABB AFFILIATES shall create any warranty of ABB or ABB AFFILIATES. The application and use of the Reference Design shall be governed by the Court of



What is ABB Ability™ energy manager? security??? 5.2 Web-based platform ABB Ability™ Energy and Asset Manager ABB Ability™ Energy Manager Energy efficiency is essential for running your operations competitively. ABB Ability™ Energy Manager allows you to understand energy in real time and identify opportunities for continuous improvement. Its scalability allows the exploit



Can a battery storage system increase power system flexibility? sive jurisdiction.??? 2. Utility-scale BESS system description??? Figure 2. Main circuit of a BESS Battery storage systems are emerging as one of the potential solutions to increase power system flexibility in the presence of variable energy resources, such

ABB LOAD SWITCH CANNOT STORE ENERGY



Is ABB SF 6 better than AirPlus? AirPlus is a fluoroketone-based gas mixture, with a 99.9 percent lower GWP compared to SF 6. In addition to AirPlus, ABB's eco-efficient portfolio also includes Dry Air, which is a natural gas and is suitable for lower voltage applications up to 12 kV. With the new LBS ABB's sustainable switchgear portfolio becomes even more attractive.



ABB has further extended its InSite smart energy and load management system, through new plug-in expansion modules, accessories, and software updates to improve energy efficiency in both sub and final distribution to enable additional use cases. Auto-reclosing devices automatically switch coupled devices back on in the event of an unwanted



Another breakthrough for ABB's sustainable switchgear portfolio has been released to order: ABB has launched a ring main unit (RMU) with a groundbreaking load break switch (LBS) that uses ???



Casambi offers all the control options you would expect from a contemporary lighting control system. Delivering more than on/off lighting control, via the Casambi App end users can change the color temperatures (turnable white) or the color of RGB light bulbs and fixtures, set and store lighting scenes and remotely control lights from anywhere on a smart device.



OT40F3 Isolator 40A LOAD BREAK SWITCH 3P The store will not work correctly when cookies are disabled. Call us now on: 01706 242050 or email [email ABB ot40f3 isolator 40 amp load break switch 3 pole 1SCA104902R1001 front operated, base mounted, DIN-rail mountable switch-diconnector / non-fusible disconnect switch with protected clamp

ABB LOAD SWITCH CANNOT STORE ENERGY



Buy ABB Genuine Medium Voltage 11kV, 630A, 21kA for 3 sec Outdoor, SF6 Gas Insulated switchgear with 01 nos manually operated Load break Switch and 01 no. Manually operated Vacuum Circuit Breaker (Type: CV)(9AAC30400163CV) at ABB Official Online shop. Goo The store will not work correctly in the case when cookies are disabled.



energy storage applications, offering and features. Even though energy storage units are not part of ABB Drives offering portfolio, their main capabilities and characteristics are presented in this guide as they affect the choice and dimensioning of converter modules. The energy storage unit does not belong to the converter unit delivery.



ABB's solutions for monitoring real-time network parameters and load management ensure efficiency, service continuity and energy consumption optimization in the system for any kind of application. Within ABB's range of products digital and analog time switches represent the easiest solution to control circuit opening and closing according



In energy storage system (ESS) applications, the ABB DC disconnect switch (OTDC) can be used as the main switch to protect the DC side of energy storage power conversion (PCS), battery ???



Building on over 140 years of excellence, ABB's more than 105,000 employees are committed to driving innovations that accelerate industrial transformation. . About ABB Electrification ABB Electrification is a global technology leader making efficient and reliable use of electricity from source to socket possible.

ABB LOAD SWITCH CANNOT STORE ENERGY



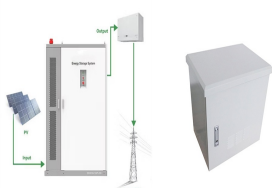
ABB OT25ET3 ABB LOAD BREAK SWITCH 25A 3POLE, distributed by Kempston Controls. Energy Meters. Energy Meter; Energy Meter Accessories; Other Panel Meters. Other Panel Meters; Shunts. If you would like to discuss any of the parts which you see on our online store, please contact our dedicated sales centre on +44 (0) 1933 411411.



The switch family consists of a complete range of switch-disconnectors, switch fuses, transfer switches, bypass switches and fuses. ABB's switches are designed for flexibility and reliable performance in a wide variety of applications: power distribution for residential and industrial buildings, HVAC, water pumping stations, data centers and



Overview Switch Actuators ABB i-bus(R) KNX Overview ETS Application 1.0 New ETS Application 1.1 Firmware Update Application Update ETS App Update Copy Convert Bus coupler (BCU) key December 16, 2021 Slide 2 ???16/20A C-load + energy function ???2 x 4 devices ABB i-bus(R) KNX Switch Actuators

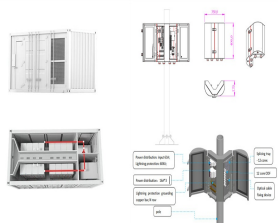


Vacuum-technology load break switches (LBSs) are used in switchgear filled with environmentally friendly alternatives to the SF₆ insulating gas. These switches have some drawbacks. Refined puffer interrupter technology promises a reliable, cost-effective and easy-to-use LBS alternative.



ABB i-bus(R) KNX is designed to reduce building operating costs and to employ the required energy consumption according to demand. Objectives are optimization of resources, climate protection, and cost saving while keeping the comfort level of users at its highest. Main benefits. Saves energy, improves productivity and increases safety

ABB LOAD SWITCH CANNOT STORE ENERGY



The energy required for operation is provided by capacitors, which ensure an adequate store of energy. The electronic control circuit can be supplied in two versions: the "basic" one and the ???



ABB OT80E3 ABB LOAD BREAK SWITCH 80A 3POLE, distributed by Kempston Controls. Energy distribution systems. Lock system for enclosure/cabinet; Circuit breakers and fuses. If you would like to discuss any of the parts which you see on our online store, please contact our dedicated sales centre on +44 (0) 1933 411411.



high arc flash incident energy. ABB's solution retrofits a fixed mounted ABB vacuum circuit breaker (VCB) into the fused compartment of the LIS. Operating in three cycles, the fast-acting VCB is superior to fuses and provides a new arc flash mitigation solution designed in response to current arc flash safety standards. ???



BreakMaster??? LIS, featuring the advanced interrupting technology of the VersaRupter(R) switch, provides dependable, economical load switching and protection for medium voltage circuit applications from 2.4 kV through 15 kV in 600 A and 1200 A load ratings and 40 kA and 61 kA load interrupting ratings.



Check that the fuse of the motor operator (at the bottom of the switch) is ok, that the OMD controller does not show any alarms and that the switch has a power supply. 17. In motorized change-over switches from 40 to 125 Amperes (OTM40???125): How does the connection terminal with the mark "this terminal is for OMD connection" works?

ABB LOAD SWITCH CANNOT STORE ENERGY



2.5. Energy meters 14 3. Installation 15 3.1. Modbus connection on Terra AC Charger 15 3.1.1. Insert the cable for the Energy meter communication 16 3.1.2. Connect the wires for the Energy meter communication 17 3.2. Installation of the Energy meter 17 4. Load management configuration 20 4.1. Energy meter configuration 20 4.1.1.



The control of electrical loads is an essential facet in the efficient management of energy. From lighting a lamp to the most advanced industrial operations, the precise load management plays a fundamental role for the operation of companies and the efficient and safe use of ???



Momentary (asym) / Fault-closing (asym) / Short time (sym) 40kA / 40kA / 25kA for 5kV and 15kV 61kA / 61kA / 40kA for 5kV and 15kV 30kA / 30kA / 20kA for 25kV 40kA / 30kA / 25kA for 36kV Technical Offering ??? Load Break Switch Optional Features Electrical operation Auxiliary contacts Shunt Trip Motor Operator Single or dual spring actuating



ABB OT160E3 ABB 160A LOAD BREAK SWITCH 3P part of Non-Fused Switch Disconnectors, distributed by Kempston Controls. Energy distribution systems. Lock system for enclosure/cabinet; If you would like to discuss any of the parts which you see on our online store, please contact our dedicated sales centre on +44 (0) 1933 411411.



The company has over 140 years of history and more than 105,000 employees worldwide. ABB's shares are listed on the SIX Swiss Exchange (ABBN) and Nasdaq Stockholm (ABB). ABB Electrification is a global technology leader making efficient and reliable use of electricity from source to socket possible.

ABB LOAD SWITCH CANNOT STORE ENERGY



ABB i-bus(R) KNX Switch Actuators ???Energy Functions in Detail
November 27, 2020 Slide 14 Load Monitoring ???Practical Example With
the load monitoring thanks to current measurement not ???



The ABB load break switch is compact, economical, ??? exible and easy
to use. The load break switch utilizes ABB's unique ??? Three-phase
gang operated quick-make, quick-break with Stored Energy mechanism
type A Switch live parts include heavy one-piece cast copper alloy
contacts and terminals, which are silver-plated to conduct heat away



SA/S12.16.6.2 Switch Actuator, 12-fold, 16 A, C-Load, Energy Function,
MDRC The switch actuator uses potential free contacts to switch 12
independent electrical loads via ABB i-bus(R) KNX. The device has
integrated energy functions. We store choices you have made so that
they are remembered across visits in order to provide you a more



IPD offers an extensive range of load break switches, including ABB load
break switches from 16A up to 4000A available in different mounting
configurations. Switches from 16 to 125A are DIN rail mountable and suit
a DIN slot mounting. For switch from 160A to 800A side operating
versions are available to highlight the visible contacts.