

# AMORPHOUS PHOTOVOLTAIC PANEL WIRING DIAGRAM



What is a solar panel wiring diagram? A solar panel wiring diagram (also known as a solar panel schematic) is a technical sketch detailing what equipment you need for a solar system as well as how everything should connect together. There's no such thing as a single correct diagram. Several wiring configurations can produce the same result.



How do you wire a solar system? To do this wiring, make two sets of PV panels and connect them in series. Then, connect the two sets of series-connected solar panels in parallel to the charge connector. This solar system wiring diagram depicts an off-grid scenario where the solar panels are series wired.



How to wire solar panels in parallel or series? Connect the negative terminal of the first panel and the positive terminal of the second panel and connect to the corresponding terminals in solar regulator's input. The solar regulator will detect the panels and start to charge the battery during sunlight. Wiring solar panels in parallel or series doesn't have to be an either/or proposition.



How to wire solar panels together? Wiring solar panels together can be done with pre-installed wires at the modules, but extending the wiring to the inverter or service panel requires selecting the right wire. For rooftop PV installations, you can use the PV wire, known in Europe as TUV PV Wire or EN 50618 solar cable standard.



Do you need a solar panel diagram? Diagrams are the best way to plan out the configuration of your solar panel array and balance of system before you start generating potentially hazardous high-voltage electricity. That way, you can make sure it works on paper first.

# AMORPHOUS PHOTOVOLTAIC PANEL WIRING DIAGRAM



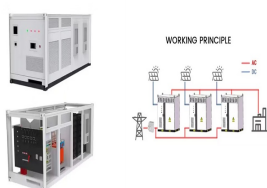
Can a solar panel array have more than one PV module? Solar panel arrays with more than a few PV modules require careful planning that takes into account numerous factors like AC output requirements in voltage and amps, peak sun hour conditions at your installation location, type of solar inverter, and other balance of system components.



The connection diagram for a solar panel and inverter system typically involves the following steps: If the measured voltage is significantly lower than the expected range, it may indicate a wiring issue or a faulty solar panel. Another test that should be performed is a current test. This involves using a multimeter to measure the current



Discover the essential components and connections of a wiring diagram for solar panels, including the placement of inverters, charge controllers, and batteries. Learn how to properly wire your solar panel system to maximize efficiency and ???

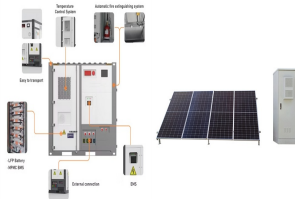


watt semi-flexible panel Wiring diagram showing connection of an auxiliary 120 watt solar panel when extra power is needed. Tracer MPPT solar controller Solar panel array Pole or canvas mounted. custommarineproducts 2020 ???



The first 2 diagrams below show an 800 watt solar panel wiring diagram wired in parallel and series with 4 x 200w panel configurations. The 3rd diagram shows an 800 watt setup wired in a combination of parallel and series with 8 x 100w panel configurations.

# AMORPHOUS PHOTOVOLTAIC PANEL WIRING DIAGRAM



(Source: Electrical Technology) By combining parallel and series connections in a hybrid wiring configuration, you can address issues like shade and high voltage to maximize your electricity output and performance.. ???



PV Connection Diagram: For complex installations, a pv connection diagram provides detailed guidance on linking various components, ensuring that the wiring of solar panels is safe and efficient. PV System Wiring ???



Create detailed documentation of your solar panel wiring diagrams, including equipment specifications, wiring diagrams, and installation instructions. Ensure that your design complies with local building codes, electrical regulations, and ???



Each of our diagrams include an appropriately sized solar kit with the components list if you'd prefer to buy your solar panel system this way. RV Solar Panel Wiring Diagrams. Here's a list of each RV solar panel wiring ???



Volt Solar System Wiring Diagram. A 12 volt solar system wiring diagram is a visual representation of the electrical connections and components in a solar power system that operates at 12 volts. It shows how different components, such as solar panels, batteries, charge controllers, and inverters, are interconnected to form a functioning system.

# AMORPHOUS PHOTOVOLTAIC PANEL

## WIRING DIAGRAM



These terms form the backbone of solar panel wiring and assist in determining the optimal configuration for any given solar power system. Basic Concepts of Solar Panel Wiring (aka Stringing) Solar panel wiring, commonly referred to as stringing, involves the connection of multiple solar panels to consolidate their output and integrate it into a home's electrical system ???



Option 1: Designing Your Own Solar Panel Wiring Diagrams ??? From Concept to Reality. Designing a solar panel wiring diagram is both an art and a science, requiring careful planning, attention to detail, and a thorough understanding of electrical principles. Here's a step-by-step guide to help you bring your solar vision to life:



Schematic diagrams of Solar Photovoltaic systems. Have you decided to install your own photovoltaic system but don't know where to start? We have produced a number of connection diagrams for the various components of a solar ???

APPLICATION SCENARIOS



(Source: Electrical Technology) By combining parallel and series connections in a hybrid wiring configuration, you can address issues like shade and high voltage to maximize your electricity output and performance.. Hybrid connections are often the optimal choice for larger solar panel arrays. Typically, you'll work with a professional installer who will assess ???

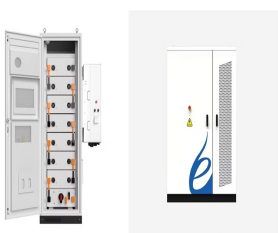


The first 2 diagrams below show a 600 watt solar panel wiring diagram wired in parallel and series with 3 x 200w panel configurations. The 3rd diagram shows a 600 watt set wired in a combination of parallel and series ???

# AMORPHOUS PHOTOVOLTAIC PANEL WIRING DIAGRAM



On this page, you can find our installation instructions and some simple wiring diagrams for different setups. MC4 Instructions; Soudaflex40FC.pdf; vehicle-kit-instructions-new.pdf; Single Panel Installation guide and Diagram; 2 Panels in ???



What is a Solar Panel Wiring Diagram? A solar panel wiring diagram is a visual representation of how the various components of a solar power system are connected together. It shows the flow of electricity from the solar panels to the battery and other components, allowing for easier installation and troubleshooting.



From solar panel wiring basics to more complex photovoltaic wiring diagrams: a solar panel wiring guide to series and parallel. Menu. Home; Call Us; 0345 528 0474; Location: United Kingdom, Language: English; Change Location United Kingdom Select your location; Americas; Brazil Canada Mexico United States Europe/Middle East/Africa;



I am not sure why you said 2pcs of 120ah12V batteries in series. He needs batteries to supply the 1500w loads for 12hours at night. Basically that is  $1500w * 12 = 18000wh$ . dividing by 50% depth of discharge as you choose flooded, ???



Solar panels are great to have, but they can be a bit confusing to install. The wiring diagrams are especially intimidating for those that don't know what they're looking at. To help clear things up, we put together this beginner-friendly guide on solar panel wiring diagrams. So what are solar panel wiring diagrams? Wh

# AMORPHOUS PHOTOVOLTAIC PANEL

## WIRING DIAGRAM



The wiring diagram shows how the panels are connected in series or parallel to achieve the desired voltage and current output. The DC power is then fed into the inverter, which converts it into AC power suitable for use in the building or for export to the electrical grid. When it comes to installing a solar power system, understanding the



Amorphous solar panels are one of the most popular types of rooftop solar panel systems and they offer a range of advantages. This guide will provide you with a step-by-step guide to installing amorphous solar panels, so ???



The 4 diagrams below show a 400 watt solar panel wiring diagram wired in parallel and series with 2 x 200w and 4 x 100w panel configurations. For a full breakdown of the detail, comparisons, and even an interactive calculator for mixed panels, check out our complete guide to wiring your solar panels in series or parallel.



Learn how to wire a 12V solar panel system with this straightforward wiring diagram and step-by-step guide. Wiring a 12V solar panel typically involves connecting the positive and negative terminals of the panel to the corresponding terminals of a solar charge controller, a device that regulates the current and voltage from the solar panel to prevent battery overcharging. From ???



Even if you don't do any harm, a smart solar panel wiring plan will optimize performance and maximize the return on your investment. Read on to find out more about solar panel connection diagrams and how to wire PV ???



# AMORPHOUS PHOTOVOLTAIC PANEL

## WIRING DIAGRAM



Components of a Solar Panel Wiring Diagram. When creating a wiring diagram for solar panels, there are several important components to consider. These components help to facilitate the flow of electricity and ensure the system ???



From understanding what a solar panel wiring diagram is, to creating your own with Canva, and even diving into a specific example for a campervan, you're now equipped with the knowledge to harness the power of the sun. Remember, a solar panel wiring diagram is more than just a bunch of lines and symbols. It's your roadmap to a sustainable, eco



The schematic diagram of the photovoltaic system in in present scenario has been shown in Fig. In a solar panel, a module is a (a) Carlson DE, Wagner S (1993) Amorphous silicon photovoltaic systems. In: Burnham L (ed) Chapter 9 of renewable energy, Island press, Washington, D.C.



With solar panels accounting for 54% of all new electricity generation capacity, you are still not immune to emergencies and power outages unless you rely on an off-grid solar power system.. Speaking of which, ???



The recycling of solar panel cells has undergone a transformative journey, encompassing the past, present, and future of sustainable practices within the renewable energy sector.