

# ANTARCTICA INDUSTRIAL MONITOR ENCLOSURE



What is a monitor enclosure? Monitor enclosures are designed to enclose LCD monitors or widescreen desktop monitors and can house a small PC. They are available in NEMA 4 and NEMA 4X.



What is a high security enclosure? High security Enclosure protects desktop or tower PCs in industrial environments. Protective enclosures to accommodate LCD monitor sizes ranging from 17" to 24". Compact All in One computer cabinet will protect your PC in harsh Industrial environments. Touch screen monitor enclosure to protect TFT screens in harsh Industrial environments.



What is a printer enclosure? Enclosure for improving the safety and reliability of printers in factories and industrial environments. Designed for thinclient PCs and Touchscreens up to 22". IP65 rated printer protection for printer use in washdown environments. PC enclosure to protect TFT screens and standard desktop or tower PCs in harsh industrial locations.



What is a TFT monitor enclosure? Touch screen monitor enclosure to protect TFT screens in harsh Industrial environments. Waterproof computer enclosures for protection in light wash or wipe down environments. IP54 enclosure with touchscreen, protects desktop or tower PCs in dusty/dirty environments.



What is ATEX / Zone 2 rated enclosure? ATEX /Zone 2 rated enclosure for protection in explosive areas. UK-based digital signage manufacturer with over 30 years' experience. Integrated or standalone - Keyboard & Mouse options to complement any Armagard enclosure. For touch screen digital advertising displays and enclosures. For screen protection against the effects of sunlight exposure.

# ANTARCTICA INDUSTRIAL MONITOR ENCLOSURE



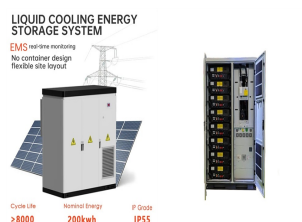
What is a waterproof computer enclosure? Waterproof computer enclosures for protection in light wash or wipe down environments. IP54 enclosure with touchscreen, protects desktop or tower PCs in dusty/dirty environments. Thermostatically controlled heated enclosure for printer use in deep freeze (-30°C) environments.



Safely house your LCD monitors or small TVs in any environment with our durable LCD monitor enclosure. Protect your technology today. (866) 646-4383 [info@pcenclosures.com](mailto:info@pcenclosures.com). Products. Industrial TV Enclosures; Anti-Ligature Enclosures; Our LCD TV Enclosures are tough enough for the harshest of industrial factories. If you run an up-to-date



Industrial computer monitor enclosures give you a flexible, cost-effective solution for protecting IT equipment in tough workplace environments. The benefits of computer enclosure protection extend beyond keeping your systems operational, they serve to protect your entire business operation and your reputation.



Protect 17" ~ 24" LCD computer monitors or small TVs with Armagard's rugged, LCD Monitor Enclosure. Fitted with a universal VESA 100 or 200 mounting system, simply affix your screen in the enclosure, plus your thin client PC, for ???



Designed to protect tower or desktop PCs and flat screens (TFT, LCD, plasma or touch screens) up to 19 inches, our 700 series industrial LCD monitor enclosure is a dustproof NEMA 4 PC enclosure that comes complete with a keyboard and ???

# ANTARCTICA INDUSTRIAL MONITOR ENCLOSURE



The choice of enclosure material for an industrial monitor is pivotal in determining its durability and suitability for specific environments. Options like aluminum, steel, and stainless steel offer varying degrees of robustness and resistance to environmental factors like dust, moisture, and chemicals.



Typically coming in stainless-steel enclosures, ToughStation industrial monitors are fully sealed to protect the internal components from environmental factors, whether indoors or outdoors. Ready for washdown areas and applications requiring frequent chemical cleaning, the stainless-steel enclosures resist corrosion.



Strongarm has the expertise and experience to customize, design, and build the ideal operator interface to suit your application. Our extensive design resources enable us to engineer every feature you'll need before in-house fabrication, ???



Keep two monitors and a computer operating smoothly, in a dusty and harsh environment, with the IceStation TITAN Dual Monitor Enclosure for desks, counters, or industrial workspaces!. The Desktop Hammerhead Enclosure will protect 2 monitors and other electronics from dust, dirt, lint, grease, fibers in the air, splashing fluids, and other contaminants.



Hope Industrial 23??? Panel Mount Monitors are designed to provide superior picture quality and state-of-the-art features in a rugged enclosure, ensuring years of reliable operation in any factory environment. A unique single-cutout, stud-free design and 47 mm (1.84???) depth make installation a ???

# ANTARCTICA INDUSTRIAL MONITOR ENCLOSURE



industrial enclosure. Bocube. Width: 80 mm - 364 mm Height: 89 mm - 284 mm Depth: 47 mm - 160 mm. Enclosures 080V2621-18 Monitor casing technical data CODE 080V2621-18 DESCRIPTION Display pushbutton panel with ???



Computer Enclosures. PC Enclosure ??? IP65/IP66-rated enclosure for standard-sized commercial or industrial PCs; mount to pedestal base or wall; Thin Client/Small PC Enclosure ??? IP65/IP66-rated enclosure for compact PCs and Thin Clients; mount to pedestal base or wall; Handles. Easily rotate and tilt monitor without touching the monitor



Our rugged command consoles have the durability and flexibility required in industrial, manufacturing, military, government, and other room settings. AbleVIEW accommodates enclosed CRT and flat panel monitors and all types of specialized panel-mounted control and monitoring equipment. Monitor and Equipment Enclosures, Built to Your Specs



At Irontech you will find industrial touch monitors with IP65 front panel and fully waterproof stainless steel VESA enclosures. Get more information or a customised quote for our industrial monitors without obligation by contacting us. Industrial Monitors can be surface, wall or electrical cabinet mounted, depending on the needs of your



PC Enclosure's PC Defender is the industry-leading industrial computer enclosure built to protect valuable equipment in the harshest environments. (866) 646-4383 info@pcenclosures . Products. Industrial TV Enclosures; Anti-Ligature Enclosures; Fits up to a 24??? Monitor;

# ANTARCTICA INDUSTRIAL MONITOR ENCLOSURE



Industrial LCD Monitor Enclosure; Industrial LCD Monitor Enclosure NEMA 4 Enclosure for Small Computers and LCD Screens. Designed to protect tower or desktop PCs and flat screens (TFT, LCD, plasma or touch screens) up to 19 inches, our 700 series industrial LCD monitor enclosure is a dustproof NEMA 4 PC enclosure that comes complete with a



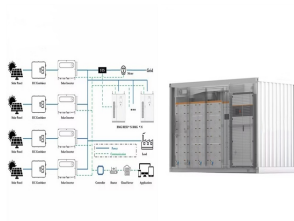
Monitor enclosures are designed to protect audio and video equipment in various indoor and outdoor settings. With durable frames and transparent screens, monitor and TV enclosures ???



Keep two monitors and a computer operating smoothly, in a dusty and harsh environment, with the IceStation TITAN Dual Monitor Enclosure for desks, counters, or industrial workspaces! The Desktop Hammerhead Enclosure will ???



These industrial monitors allow workers to monitor processes, analyze data, and make informed decisions quickly for improved productivity. They are an essential tool for managing robotics and ensuring efficient product manufacturing. Industrial monitors, specifically touch screen monitors, are essential in industrial automation.



The Faytech North America Industrial Monitor with Touch Screen Functionality . faytech North America's industrial touchscreen display series come with capacitive or resistive interface.All of our touch displays utilize industry-grade LED LCDs, a wide operating temperature range, along with a high IP-rated bezel.

# ANTARCTICA INDUSTRIAL MONITOR ENCLOSURE



Hope Industrial Enclosures for Commercial and Industrial PCs provide a sealed, clean, and cool operating environment for any 3rd-party desktop or industrial PC ??? even in full wash-down manufacturing environments. Create a full stand-alone workstation by adding a Universal Mount Monitor, Industrial Keyboard, and Pedestal Mount.



Computer Enclosures. PC Enclosure ??? IP65/IP66-rated enclosure for standard-sized commercial or industrial PCs; mount to pedestal base or wall; Thin Client/Small PC Enclosure ??? IP65/IP66-rated enclosure for compact PCs and Thin Clients; mount to pedestal base or wall; Handles. Easily rotate and tilt monitor without touching the monitor



Global Industrial is a Leading Distributor of Office & School Supplies supplies. Sales: 1.888.645.0878 . Canada - English. Monitor enclosures are designed to protect audio and video equipment in various indoor and outdoor settings. With durable frames and transparent screens, monitor and TV enclosures offer reliable, weather-resistant



Computer Enclosures. PC Enclosure ??? IP65/IP66-rated enclosure for standard-sized commercial or industrial PCs; mount to pedestal base or wall; Thin Client/Small PC Enclosure ??? IP65/IP66-rated enclosure for compact PCs and ???



Types of Industrial Control Panel Enclosures. When it comes to industrial control panel enclosures, variety is key! Different types serve unique purposes, and understanding these can help you make the best choice. Free-standing Enclosures. These enclosures are perfect for standalone installations. They are often found in manufacturing plants



# ANTARCTICA INDUSTRIAL MONITOR ENCLOSURE



Computer Enclosures. PC Enclosure ??? IP65/IP66-rated enclosure for standard-sized commercial or industrial PCs; mount to pedestal base or wall; Thin Client/Small PC Enclosure ??? IP65/IP66-rated enclosure for compact PCs and ???



Hope Industrial 19??? Universal Mount Monitors are designed to provide superior picture quality and state-of-the-art features in a rugged NEMA 4/4X, IP65/IP66 enclosure, ensuring years of reliable operation in any factory environment.



The stainless steel, NEMA 4X IO29 monitor enclosure accommodates up to a 25" monitor and is the perfect solution for limited spaces. Call Us Today for More Information: 1-800-423-9911 (Mon-Fri, 8-5) 0 Shopping Cart. thin client and small form PC's, the industrial IO monitor enclosures are the perfect solution for limited space environments.



Computer Enclosures. PC Enclosure ??? IP65/IP66-rated enclosure for standard-sized commercial or industrial PCs; mount to pedestal base or wall; Thin Client/Small PC Enclosure ??? IP65/IP66-rated enclosure for compact PCs and Thin Clients; mount to pedestal base or wall; Handles. Easily rotate and tilt monitor without touching the monitor

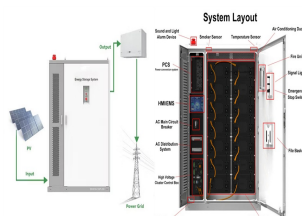


Hope Industrial 23.8??? Universal Mount Monitors are designed to provide superior picture quality and state-of-the-art features in a rugged IP65/66 enclosure, ensuring years of reliable operation in any factory environment.

# ANTARCTICA INDUSTRIAL MONITOR ENCLOSURE



Computer Enclosures. PC Enclosure ??? IP65/IP66-rated enclosure for standard-sized commercial or industrial PCs; mount to pedestal base or wall; Thin Client/Small PC Enclosure ??? IP65/IP66-rated enclosure for compact PCs and Thin Clients; mount to pedestal base or wall; Handles. Easily rotate and tilt monitor without touching the monitor



15" Panel Mount Industrial Monitor and Rugged Touch Screens - IP65/IP66, NEMA 4/4X rated with 5-year Warranty. Order Today, Install Tomorrow. Products; Support; 15??? Panel Mount Monitors are designed to provide superior picture quality and state-of-the-art features in a rugged enclosure, ensuring years of reliable operation in any factory

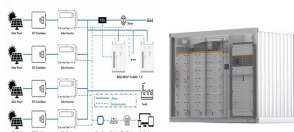
## Commercial and Industrial ESS

Air Cooling / Liquid Cooling

- Charge Priority Solution
- Renewable Energy Integration
- Modular Design for Portable Equipment



Industry Leading Prices on Industrial Monitors. You don't need to pay high prices for a high-quality industrial monitor or touch screen; you now have an affordable option. We are extremely confident in our products and back them up with a ???



Industrial 17" to 27" Designs. Touch Screen Enclosures. Resistive Solutions, IP56/IP65. Printer Enclosures. For Zebra, SATO, TSC Printers. TV & LCD Enclosures. Outdoor 19" to 86", IP54/IP65. Digital Signage. Indoor & Outdoor Floor Standing. Stainless Steel Display Enclosures. Hygienic 55" to 86", IP56/IP65. IP65 Tablet Enclosures. Cases for