

BAKKEN FLYWHEEL ENERGY STORAGE



Kinetic/Flywheel energy storage systems (FESS) have re-emerged as a vital technology in many areas such as smart grid, renewable energy, electric vehicle, and high-power applications. FESSs are



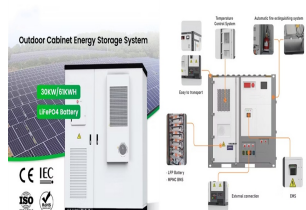
Ultracapacitors (UCs) [1, 2, 6-8] and high-speed flywheel energy storage systems (FESSs) [9-13] are two competing solutions as the secondary ESS in EVs. The UC and FESS have similar response times, power density, durability, and efficiency [9, 10]. Integrating the battery with a high-speed FESS is beneficial in cancelling harsh transients from



The flywheel schematic shown in Fig. 11.1 can be considered as a system in which the flywheel rotor, defining storage, and the motor generator, defining power, are effectively separate machines that can be designed accordingly and matched to the application. This is not unlike pumped hydro or compressed air storage whereas for electrochemical storage, the a?|



The flywheel energy storage system (FESS) offers a fast dynamic response, high power and energy densities, high efficiency, good reliability, long lifetime and low maintenance a?|



Falcon Flywheels is an early-stage startup developing flywheel energy storage for electricity grids around the world. The rapid fluctuation of wind and solar power with demand for electricity creates a need for energy storage. Flywheels are an ancient concept, storing energy in the momentum of a spinning wheel.

BAKKEN FLYWHEEL ENERGY STORAGE



Flywheel technology has the potential to be a key part of our Energy Storage needs, writes Prof. Keith Robert Pullen: Electricity power systems are going through a major transition away from centralised fossil and nuclear based generation towards renewables, driven mainly by substantial cost reductions in solar PV and wind.



The literature 9 simplified the charge or discharge model of the FESS and applied it to microgrids to verify the feasibility of the flywheel as a more efficient grid energy storage technology. In the literature, 10 an adaptive PI vector control method with a dual neural network was proposed to regulate the flywheel speed based on an energy optimization a?|



Flywheel Energy Storage System (FESS) Revterra Kinetic Stabilizer Save money, stop outages and interruptions, and overcome grid limitations. Sized to Meet Even the Largest of Projects. Our industrial-scale modules provide 2 MW of power and can store up to 100 kWh of energy each, and can be combined to meet a project of any scale.

APPLICATION SCENARIOS



NASA G2. i 1/4 ?i 1/4 ? Flywheel energy storage,i 1/4 ?FESi 1/4 ?,i 1/4 ?i 1/4 ?,a?? ,,i 1/4 ?,



Lets check the pros and cons on flywheel energy storage and whether those apply to domestic use ():Compared with other ways to store electricity, FES systems have long lifetimes (lasting decades with little or no maintenance;[2] full-cycle lifetimes quoted for flywheels range from in excess of 10 5, up to 10 7, cycles of use),[5] high specific energy (100a??130 a?)

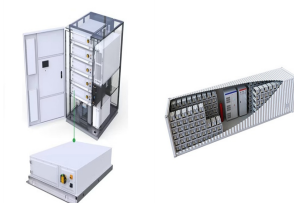
BAKKEN FLYWHEEL ENERGY STORAGE



Flywheel energy storage systems can be mainly used in the field of electric vehicle charging stations and on-board flywheels. Electric vehicles charging station: The high-power charging and discharging of electric vehicles is a high-power pulse load for the power grid, and sudden access will cause the voltage drop at the public connection point



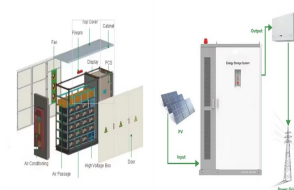
Flywheel energy storage systems are feasible for short-duration applications, which are crucial for the reliability of an electrical grid with large renewable energy penetration. Flywheel energy storage system use is increasing, which has encouraged research in design improvement, performance optimization, and cost analysis.



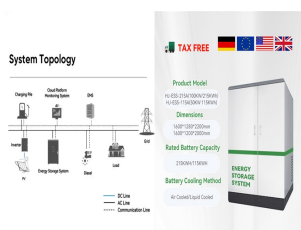
Pictured above, it has a total installed capacity of 30MW with 120 high-speed magnetic levitation flywheel units. Every 12 units create an energy storage and frequency regulation unit, the firm said, with the 12 combining to form an array connected to the grid at a 110 kV voltage level.



One energy storage technology now arousing great interest is the flywheel energy storage systems (FESS), since this technology can offer many advantages as an energy storage solution over the



Thanks to the unique advantages such as long life cycles, high power density and quality, and minimal environmental impact, the flywheel/kinetic energy storage system (FESS) is gaining steam recently.



Today, flywheel energy storage systems are used for ride-through energy for a variety of demanding applications surpassing chemical batteries. A flywheel system stores energy mechanically in the form of kinetic energy by spinning a mass at high speed. Electrical inputs spin the flywheel rotor

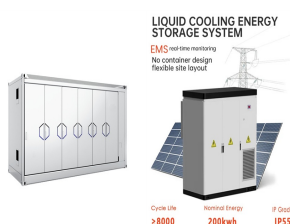
BAKKEN FLYWHEEL ENERGY STORAGE

and keep it spinning until called upon to release

BAKKEN FLYWHEEL ENERGY STORAGE



This paper presents an overview of the flywheel as a promising energy storage element. Electrical machines used with flywheels are surveyed along with their control techniques. Loss minimization



Flywheel energy storage (FES) is a technology that stores kinetic energy through rotational motion. The stored energy can be used to generate electricity when needed. Flywheels have been used for centuries, but modern FES systems use advanced materials and design techniques to achieve higher efficiency, longer life, and lower maintenance costs.



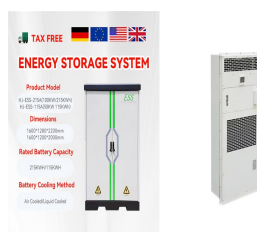
An overview of system components for a flywheel energy storage system. Fig. 2. A typical flywheel energy storage system [11], which includes a flywheel/rotor, an electric machine, bearings, and power electronics. Fig. 3. The Beacon Power Flywheel [12], which includes a composite rotor and an electric machine, is designed for frequency



Flywheel energy storage systems (FESS) employ kinetic energy stored in a rotating mass with very low frictional losses. Electric energy input accelerates the mass to speed via an integrated motor-generator. The energy is discharged by drawing down the kinetic energy using the same motor-generator. The amount of energy that can be stored is



NASA G2. i 1/4 ?i 1/4 ? Flywheel energy storage,i 1/4 ?FESi 1/4 ?,i 1/4 ?i 1/4 ?,a?? ,,i 1/4 ?,

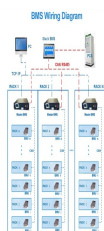


The flywheel energy storage system (FESS) offers a fast dynamic response, high power and energy densities, high efficiency, good reliability, long lifetime and low maintenance requirements, and is particularly suitable for applications where high power for short-time bursts

BAKKEN FLYWHEEL ENERGY STORAGE

is demanded. FESS is gaining increasing attention and is regarded as a

BAKKEN FLYWHEEL ENERGY STORAGE



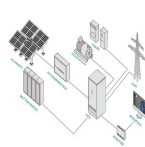
The FESS structure is described in detail, along with its major components and their different types. Further, its characteristics that help in improving the electrical network are explained. a?|



Pic Credit: Energy Storage News A Global Milestone. This project sets a new benchmark in energy storage. Previously, the largest flywheel energy storage system was the Beacon Power flywheel station in Stephentown, New York, with a capacity of 20 MW. Now, with Dinglun's 30 MW capacity, China has taken the lead in this sector.. Flywheel storage a?|



In the field of flywheel energy storage systems, only two bearing concepts have been established to date: 1. Rolling bearings, spindle bearings of the & #x201C;High Precision Series& #x201D; are usually used here.. 2. Active magnetic bearings, usually so-called HTS (high-temperature superconducting) magnetic bearings.. A typical structure consisting of rolling a?|



Energy storage flywheel systems are mechanical devices that typically utilize an electrical machine (motor/generator unit) to convert electrical energy in mechanical energy and vice versa. Energy is stored in a fast-rotating mass known as the flywheel rotor. The rotor is subject to high centripetal forces requiring careful design, analysis, and fabrication to ensure the safe a?|



A flywheel energy storage system employed by NASA (Reference: wikipedia) How Flywheel Energy Storage Systems Work? Flywheel energy storage systems employ kinetic energy stored in a rotating mass to store energy with minimal frictional losses. An integrated motora??generator uses electric energy to propel the mass to speed. Using the same

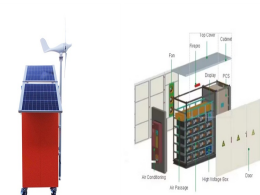
BAKKEN FLYWHEEL ENERGY STORAGE



A review of energy storage types, applications and recent developments. S. Koohi-Fayegh, M.A. Rosen, in Journal of Energy Storage, 2020 2.4 Flywheel energy storage. Flywheel energy storage, also known as kinetic energy storage, is a form of mechanical energy storage that is a suitable to achieve the smooth operation of machines and to provide high power and energy a?|



Flywheel Energy Storage (FES) systems refer to the contemporary rotor-flywheels that are being used across many industries to store mechanical or electrical energy. Instead of using large iron wheels and ball bearings, advanced FES systems have rotors made of specialised high-strength materials suspended over frictionless magnetic bearings



The anatomy of a flywheel energy storage device. Image used courtesy of Sino Voltaics . A major benefit of a flywheel as opposed to a conventional battery is that their expected service life is not dependent on the number of charging cycles or age. The more one charges and discharges the device in a standard battery, the more it degrades.



The core element of a flywheel consists of a rotating mass, typically axisymmetric, which stores rotary kinetic energy E according to (Equation 1) $E = \frac{1}{2} I \omega^2$ [J], where E is the stored kinetic energy, I is the flywheel moment of inertia [kgm²], and ω is the angular speed [rad/s]. In order to facilitate storage and extraction of electrical energy, the rotor a?|