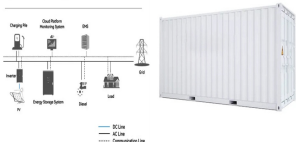


BASIC ANIMATION OF ENERGY STORAGE POWER STATION



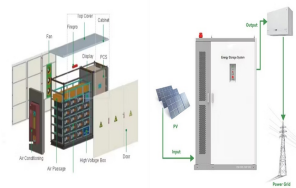
System Topology



The electricity production is 98 000 MWh/year generated by PT during the day and by biomass energy at night, with a 22.5 MW net power capacity, avoiding 24 500 tons emissions [132,133].



OverviewBasic principleTypesEconomic efficiencyLocation requirementsEnvironmental impactPotential technologiesHistory



3.1 Design of our proposed system. As a new generation of energy storage power stations, the Metaverse-driven energy storage power station fully integrates the emerging digital twin, artificial intelligence technology, interactive technology, advanced communication and perception technology, etc. Aiming at the problems that traditional simulation-based energy ???

APPLICATION SCENARIOS



The large-scale grid-connection of wind power has brought new challenges to safe and stable operation of the power system, mainly due to the fluctuation and randomness wind power output (Yuan et al., 2018, Yang Li et al., 2019).To mitigate the impact of new energy sources on the grid, it is effective to incorporate a proportion of energy storage within wind farms.



Energy / generation services. Utility-scale storage refers to technologies connected to the power grid that can store energy and then supply it back to the grid at a more advantageous time ??? for example, at night, when no solar power is available, or during a weather event that disrupts electricity generation.

BASIC ANIMATION OF ENERGY STORAGE POWER STATION



Energy Encyclopedia (EE) is the educational web page dedicated to perspective forms of energy production. You will find many educational 3D interactive models, 3D models of energetics objects for 3D printing, educational videos. You can ask any question from physical mysteries - and we will answer it. Everything on the Energy Encyclopedia is for free. For educational purposes no ???



The solar power plant uses solar energy to produce electrical power. Therefore, it is a conventional power plant. Energy storage devices. The batteries are used to store electrical energy generated by the solar power plants. The storage components are the most important component in a power plant to meet the demand and variation of the load



With the establishment of a large number of clean energy power stations nationwide, there is an urgent need to establish long-duration energy storage stations to absorb the excess electricity



In order to promote the deployment of large-scale energy storage power stations in the power grid, the paper analyzes the economics of energy storage power stations from three aspects of business operation mode, investment costs and economic benefits, and establishes the economic benefit model of multiple profit modes of demand-side response, peak-to-valley price ???

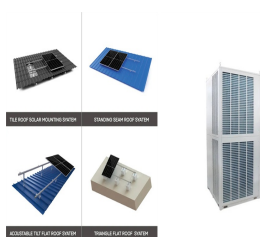


4. Pumped Storage Power Plant Pumped Storage Power Plants are a special type of power- plants, which work as conventional hydropower stations for part of the time. In a hydroelectric power station water is stored behind a dam in a reservoir. This water has gravitational potential energy. the water runs down through pipes to turn the turbine the turbine ???

BASIC ANIMATION OF ENERGY STORAGE POWER STATION



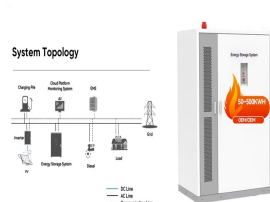
The huge weight of water trapped behind a dam is a source of potential energy that a hydro power station transforms into electricity. The Yangtze river dam. The largest power stations in the world are hydroelectric, such as the Three Gorges Dam on the Yangtze River, China . Hydro power stations can turn on very quickly.



Large scale renewable energy, represented by wind power and photovoltaic power, has brought many problems for the safe and stable operation of power system. Firstly, this paper analyzes the main problems brought by large-scale wind power and photovoltaic power integration into the power system. Secondly, the paper introduces the basic principle and engineering ???



With the development of the new situation of traditional energy and environmental protection, the power system is undergoing an unprecedented transformation[1]. A large number of intermittent new energy grid-connected will reduce the flexibility of the current power system production and operation, which may lead to a decline in the utilization of power generation infrastructure and ???



On November 16, Fujian GW-level Ningde Xiapu Energy Storage Power Station (Phase I) of State Grid Times successfully transmitted power. The project is mainly invested by State Grid Integrated Energy and CATL, which is the largest single grid-side standalone station-type electrochemical energy storage power station in China so far.



When the energy storage absorption power of the system is in critical state, the over-charged energy storage power station can absorb the multi-charged energy storage of other energy storage power stations and still maintain the discharge state, so as to avoid the occurrence of over-charged event and improve the stability of the black-start system.

BASIC ANIMATION OF ENERGY STORAGE POWER STATION



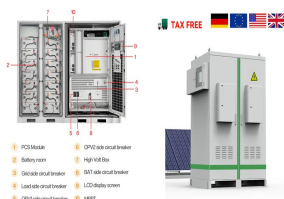
Pumped storage hydro power stations require very specific sites, with substantial bodies of water between different elevations. There are hundreds, if not thousands, of potential sites around the UK, including disused mines, quarries and underground caverns, but the cost of developing entirely new facilities is huge.



Sometimes, the thermal power plant is also known as a steam-turbine power plant or coal power plant. Related Post: Hydropower Plant ??? Types, Components, Turbines and Working; Working of Thermal Power Plant. The thermal power plant works on the Rankine cycle. A one-line diagram or layout of the thermal power plant is as shown in the below figure.



Almost two third of electricity requirement of the world is fulfilled by thermal power plants (or thermal power stations) these power stations, steam is produced by burning some fossil fuel (e.g. coal) and then used to run a steam turbine. Thus, a thermal power station may sometimes called as a Steam Power Station. After the steam passes through the steam turbine, it is ???



With the development of large-scale energy storage technology, electrochemical energy storage technology has been widely used as one of the main methods, among which electrochemical energy storage power station is one of its important applications. Through the modeling research of electrochemical energy storage power station, it is found that the current modeling research ???



If this pumped-storage power-station represents a new generation of pumped-storage power stations, the installation of four 50-MW full-power variable speed units, a set of 100 MW energy storage battery system, and the appropriate photovoltaic energy storage in the power station empty space, combined with the conventional fixed- speed units can

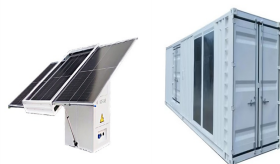
BASIC ANIMATION OF ENERGY STORAGE POWER STATION



HOW DOES PUMPED STORAGE HYDROPOWER WORK? Pumped storage hydropower (PSH) is one of the most-common and well-established types of energy storage technologies and currently accounts for 96% of all utility-scale energy storage capacity in the United States. PSH facilities store and generate electricity by moving water between two reservoirs at different ???



Patel 4 has stated that the intermittent nature of the PV output power makes it weather-dependent. In a fast-charging station powered by renewable energy, the battery storage is therefore paired



MW Dalian Flow Battery Energy Storage Peak-shaving Power Station, with the largest power and capacity in the world so far, was connected to the grid in Dalian, China, on September 29, and it will be put into operation in mid-October. This energy storage project is supported technically by Prof. LI Xianfeng's group from the Dalian Institute of Chemical Physics (DICP) of ???



Text version of the fuel cell animation that demonstrates how a fuel cell uses hydrogen to produce electricity. fuel cell is a device that uses hydrogen (or hydrogen-rich fuel) and oxygen to create electricity. Fuel cells are more energy efficient than combustion engines and the hydrogen used to power them can come from a variety of sources



Combined heat and power (CHP), also known as cogeneration, is: The concurrent production of electricity or mechanical power and useful thermal energy (heating and/or cooling) from a single source of energy.. A type of distributed generation, which, unlike central station generation, is located at or near the point of consumption.. A suite of technologies that can use a variety of ???

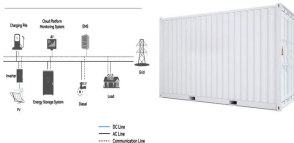
BASIC ANIMATION OF ENERGY STORAGE POWER STATION

114KWh ESS



Types of power plants Steam turbine. Most traditional power plants make energy by burning fuel to release heat. For that reason, they're called thermal (heat-based) power plants. Coal and oil plants work much as I've shown in the artwork above, burning fuel with oxygen to release heat energy, which boils water and drives a steam turbine. This basic design is ???

System Topology



Lethabo Power Station, produces electricity. CONVERTER OF ENERGY A power station is a converter of energy. The combustion of fuel, a chemical energy conversion process, generates heat to convert water into steam at a very high temperature and pressure. The heat energy contained in the steam drives the turbine, converting heat energy into



Under the background of power system energy transformation, energy storage as a high-quality frequency modulation resource plays an important role in the new power system [1,2,3,4,5] the electricity market, the charging and discharging plan of energy storage will change the market clearing results and system operation plan, which will have an important ???



Such complexes are called "pumped storage plants". In the area of energy storage, they are definitely the record-keepers. Energy can be stored in other ways, in electric batteries, or thermally in huge reservoirs of molten salts or as compressed air, (the Chapter 11 in this text is devoted specifically to energy storage methods).



A pumped-storage plant works much like a conventional hydroelectric station, except the same water can be used over and over again. Water power uses no fuel in the generation of electricity, making for very low operating costs. Duke Energy operates two pumped-storage plants ??? Jocassee and Bad Creek.

BASIC ANIMATION OF ENERGY STORAGE POWER STATION



Energy storage can reduce high demand, and those cost savings could be passed on to customers. Community resiliency is essential in both rural and urban settings. Energy storage can help meet peak energy demands in densely populated cities, reducing strain on the grid and minimizing spikes in electricity costs.