

BEHIND THE METER ENERGY STORAGE LITHUANIA



Why is electricity storage important in Lithuania? Lithuania's system of electricity storage facilities is essential to ensure the security of Lithuania's energy system and its ability to operate in isolated mode.



Who manages Lithuania's electricity storage facilities? At the end of July 2021, the Government of the Republic of Lithuania appointed Energy cells, a company of the EPSO-G Group, as the operator of the instantaneous isolated operation electricity reserve for Lithuania's electricity storage facilities and entrusted it with the management of the electricity storage facilities system.



How will Lithuania's energy storage system work? The energy storage system, which will provide Lithuania with an instantaneous isolated operation electricity reserve until synchronisation with the continental European networks (CEN), will be used after synchronisation for the integration of energy produced from renewable sources.



What is behind-the-meter energy storage? Behind-The-Meter (BTM) energy storage involves integrating storage systems, such as batteries, allowing users to store excess electricity.



What is behind the meter storage? As for Behind the Meter Storage As discussed earlier, behind the meter (BTM) refers to the electrical system on the consumer side of the power meter. Energy storage solutions in BTM applications have been used for many years as a standby power source in the case of power loss. Historically, lead-based batteries were the battery of

BEHIND THE METER ENERGY STORAGE LITHUANIA



What is behind the Meter (BTM) energy storage? BTM BESS specifically refers to stationary storage systems connected to the distribution system on the customer's side of the utility's service meter. What are the Characteristics of Behind The Meter (BTM) Energy Storage?

Characteristics of Behind The Meter (BTM) Energy Storage: 1. Size and Quantity



1 ? Vereenoghe adds, "Studies, such as those by Solar Power Europe, show that the European market for "behind the meter" energy storage will grow to 50 gigawatt hours by 2030. ???



Behind-the-meter storage refers to any type of storage that is connected directly into a customer's site, on the customer's side of the meter. This White Paper sets the scene for behind-the-meter ???



Behind the Meter energy storage is essential to alleviate grid stress from power usage fluctuations and peak electricity demand charges. What Is Behind the Meter Energy Storage? All components of the electrical grid between the ???



Benefits of Behind the Meter (BTM) Solutions: Decentralised Energy Generation: BTM systems promote decentralised energy generation, reducing the reliance on centralised power plants and transmission ???

BEHIND THE METER ENERGY STORAGE LITHUANIA



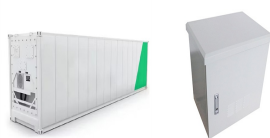
Behind the meter (BTM) distributed energy resources (DERs), such as photovoltaic (PV) systems, battery energy storage systems (BESSs), and electric vehicle (EV) charging infrastructures, have experienced significant ???



When energy demand exceeds production locally, the battery system can help balance the equation, while in times of surplus the battery can be charged up relatively cheaply. It is thought to be the first time in Belgium a ???



,(Front of the Meter,FTM)(Behind the Meter,BTM), ???



Bank CIT will be the lead arranger of financing for Swell Energy's pipeline of behind-the-meter commercial energy storage projects in California. CIT, part of First Citizens ???



Behind-The-Meter (BTM) energy storage involves integrating energy storage systems, such as batteries, allowing users to store excess electricity for future use. This approach, highlighted in emerging markets like ???

BEHIND THE METER ENERGY STORAGE LITHUANIA



Behind-the-meter battery storage projects announced last week in California and Ontario will cut electricity costs and carbon emissions for a variety of commercial and industrial (C& I) businesses. A portfolio of four C& I ???