

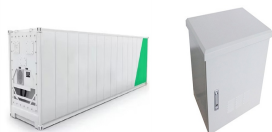
BEMS SYSTEM MARSHALL ISLANDS



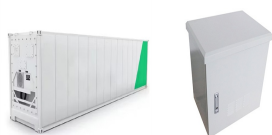
Why should I integrate a BMS with a BEMS? Integrating a BMS with a BEMS creates a more robust approach to building management. This integration enhances the traditional control functions of a BMS with the advanced energy monitoring, optimization, and fault detection capabilities of a BEMS, leading to improved energy efficiency and system health. Here's a visual representation of a BEMS.



How can a BEMS save energy? A BEMS can take that data and automatically reduce or turn off lighting to save energy. Another example would be BEMS designed for large hospitality applications. Many times guests in hotel rooms leave the air conditioning running and lights on even when they are not in the room.



Can a BEMS tie into a BACnet-compatible BMS? Ensuring that the BEMS can tie into a BACnet-compatible BMS is crucial for full functionality. It allows for the comprehensive collection and analysis of data from all endpoints. For a BEMS to deliver its full value, it needs access to high-quality data and coverage of every critical endpoint in the building.



The Global Building Energy Management System (BEMS) Market Size was estimated at USD 4644.20 million in 2021 and is projected to reach USD 9888.00 million by 2028, exhibiting a CAGR of 11.40% during the forecast period.



bemse?? e+-'e! 1/4 i?? i??e??i?? i?li?(C)e??i?? ea?e??i??e??i??e3 i
?i?'i??i?! i??e??i?? e1i?(C)i?? i ?e??i??e3 i??e2 1/2 i?? i1i??i ?i?,
e+-'e! 1/4 i?'i??i?? i??i??i??e??e?? e??i??i?? i??e??e???. bemsi?? e,?e3,
e??e??i?? e+-'e! 1/4 i?? i??e??i?? i?li?(C)e??i?? i??i??e??i? 1/4 e!?
ea?e??i??e??i??e3 e??i??i??i?! i??e??i?? i??i??i??+i?? e??i? i??e??
e2i??e??e??.

BEMS SYSTEM MARSHALL ISLANDS



The Global Building Energy Management System BEMS Market Size was estimated at USD 4649.31 million in 2021 and is projected to reach USD 9969.98 million by 2028, exhibiting a CAGR of 11.51% during the forecast period.

114KWh ESS



Building Engineering Management System a,<a,GBP a,.a,- BEMs

a,?a,.a,-

a1?a,?a,JPYa,?a,?a,-a,GBP a1?a,!a,?a,GBP a,'a,<a,2a,GBP a,?a,+-a,?a,?a,2a,GBP a,GBP a,?a,?a,?a,?a,'a,?a,?a,?a,GBP a,GBP a,!a,-a,2a,?a,2a,GBP a,?a,?a1?a,?a,?a,GBP a,?a,?a,-a,?a,?a1?a,?a,c Feature

a,aa,3a,?a,+-a,?a,?a,+-a,?a,?a,ua1? a?c

a,?a,2a,?a,?a,GBP a,'a,<a,2a,GBP a,?a,+-a,?a,?a,2a,GBP a,?a,2a,?a,?a,3a,GBP a,,a,?



The batter mixing system consists of a mixing cell, a buffer tank and a control and instrumentation station (CIS). This setup can be modified with different tank executions, automation modules and other add-ons. The intensive circulation of the ingredients produces lump-free batter in a?|



Building Energy Management System Market Overview. Building Energy Management System Market Size was valued at USD 5.2 Billion in 2022. The Building Energy Management System market Type is projected to grow from USD 5.9 Billion in 2023 to USD 15.9 Billion by 2032, exhibiting a compound annual growth rate (CAGR) of 13.20% during the forecast period (2023 a?|

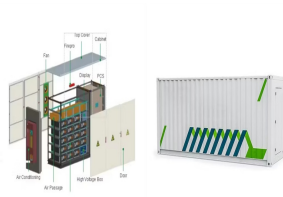


Energy Storage System (ESS) Battery Management System (BMS) Market Research Report: Information By Battery Type (Lithium-ion Based, Advance Lead-Acid, Nickel-Based, Flow Batteries), By Topology (Centralized, Modular, a?|

BEMS SYSTEM MARSHALL ISLANDS



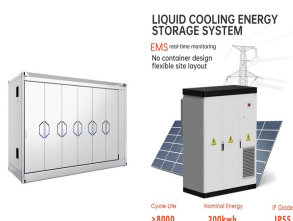
Overview This position is physically located in the Marshall Islands in support of LOGCAP*** As aa?|See this and similar jobs on LinkedIn. Posted 12:00:00 AM. Skip to main content LinkedIn



Back to marshall . Course Catalog 2024-2025. Search catalog Submit search. to help students master the fundamental concepts necessary to understand the normal and diseased gastrointestinal system. Grade Mode: Normal Grading Mode. BMS a?|



The Marshall Islands (Marshallese: a1?ajea,.), [5] officially the Republic of the Marshall Islands (Marshallese: AolepA?n AorA?kin a1?ajea,.), [note 1] is an island country west of the International Date Line and north of the equator in the Micronesia region of the Northwestern Pacific Ocean.. The territory consists of 29 coral atolls and five main islands as well as 1,220 other very small



a??a?<< a??a??a?<<a?(R)a? 1/4 a?.a?1a??a? (bems)
a??a??a??a?<<a?(R)a??a??a?<<a?(R)a? 1/4
a??a??a??a?3a??a??a??a??a?(R)a?3a?3a??a?JPYa? 1/4 a?? a??a?
1/4 a?1a?(R)a?.a?1a??a? a??a??a?? bems a??a??a??a??a?<<a?(R)a?
1/4 a?(R)a??a??a??a?<<a?(R)a? 1/4 a?3 a?|



The batter mixing system consists of a mixing cell, a buffer tank and a control and instrumentation station (CIS). This setup can be modified with different tank executions, automation modules and other add-ons. The intensive circulation a?|

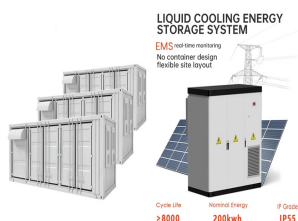
BEMS SYSTEM MARSHALL ISLANDS



The building energy management system market size was USD 6.97 Billion in 2019 and is expected to reach a market size of USD 16.92 Billion by 2028 at a CAGR of 11.8%. BEMS Industry report classifies global market by share, trend, and on the basis of components and services, communication, end-use, and region | Building Energy Management Systems a?|



Energy Storage System (ESS) Battery Management System (BMS) Market Research Report: Information By Battery Type (Lithium-ion Based, Advance Lead-Acid, Nickel-Based, Flow Batteries), By Topology (Centralized, Modular, and Distributed), And By Region (North America, Europe, Asia-Pacific, Middle East & Africa and South America) a?? Industry Forecast Till 2032



This gives techs unique visibility into the energy consumption of a building. In some cases, a building energy management system might span multiple sites for even more control and oversight. Ultimately, the goal of a robust energy management system is to use data-driven insights to optimize energy use across building systems.

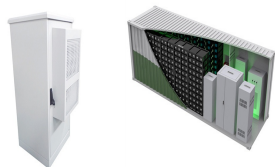


Based on the outcome and analysis of a BeMS system, we can optimise and upgrade your heating, ventilation, air handling, chilled water, cooling systems, and lighting controls. Our daily monitoring empowers energy cost reduction. With easy access to BeMS systems through our intuitive dashboard, you can make informed decisions and catch more

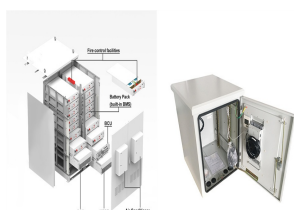


Explore the healthcare system in the Marshall Islands, highlighting its historical context, current challenges, and ongoing reforms. Learn about the structure of public and private healthcare, funding sources, and the impact of external factors like climate change. Discover community health initiatives aimed at improving health outcomes and understand the efforts of a?|

BEMS SYSTEM MARSHALL ISLANDS



BEMS is primarily driven by the trend of high peak demand charges, customers' commitment towards sustainability, energy efficiency legislation, state incentives for buildings to install energy management systems, the increasing energy performance contracts market, and increasing customer awareness about BEMS and increasing penetration of



Energy Storage System (ESS) Battery Management System (BMS) Key Market Players & Competitive Insights. With a strong presence across different verticals and geographies, the Energy Storage System (ESS) Battery Management System (BMS) market is highly competitive and dominated by established, pure-play vendors. Over 30 vendors cater to this



Pamerindo Indonesia launches Building System & Automation Indonesia in conjunction with Elenex Indonesia. Indonesia moves towards Smarter Buildings. The market for building energy management systems (BEMS) in Southeast Asia is set to grow at a compound annual growth rate of 12.2% to 2020, new research finds. According to Frost & Sullivan's



Building Energy Management System Market Overview. Building Energy Management System Market Size was valued at USD 5.2 Billion in 2022. The Building Energy Management System market Type is projected to grow from USD 5.9 Billion in 2023 to USD 15.9 Billion by 2032, exhibiting a compound annual growth rate (CAGR) of 13.20% during the forecast period (2023 a?)



69.7,2028169.2,11.8%a?? BEMS,,,,,i 1/4 ?BEMSi 1/4 ?

BEMS SYSTEM MARSHALL ISLANDS



Building Management System. As a building facilities manager, are you tired of toggling between multiple systems that leave you with rising energy bills, unexpected crisis, evacuation woes and unhappy occupants? If yes, then it is a?



The BMS mobile pump system enables the testing of objects at different locations in a workshop or at field locations. The wheels or forklift pockets make the BMS much easier to move in comparison to standard workshop units. This high flow a?



Energy and utility costs alone consume approximately 40% of the overall operating expenses of a commercial office building.. Building Energy Management Systems (BEMS) are used by to reduce the energy consumption a?



Marshall Islands Public School System Act 2013 14 MIRC Ch.3 ?303 I Page 7 (n) Commissioner means the Commissioner of Education. (o) Special education means instruction, programs or related services specifically designed or provided to assist children with disabilities in responding to or promoting equal



Request Sample-Building Energy Management Systems (BEMS) Market Research Report Analysis based on by Software (Data Management, Asset Performance Optimization, Application Platform, HVAC System, Lightning system), By Communication Technology (Wired and Wireless), By Service, (Consulting & Training, Support & Maintenance Services), By Industry a?

BEMS SYSTEM MARSHALL ISLANDS



The legal system in the Marshall Islands is patterned on common law proceedings as they exist in the United States. The country has a judicial branch composed of a Supreme Court, a High Court, a Traditional Rights Court, District Courts, and Community Courts. The Supreme Court is made up of one Chief Justice and two Associate Justices.