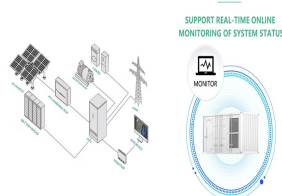


BENNING SOLAR SOUTH GEORGIA AND SOUTH SANDWICH ISLANDS



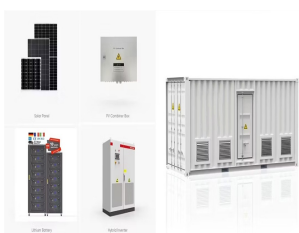
(South Georgia and South Sandwich Islands)???,1982???



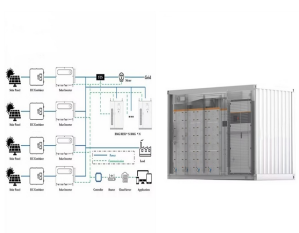
? 1/4 ?? 1/4 ?South Georgia and The South Sandwich Islands,? 1/4
?SGSSI? 1/4 ?,,??? 56?18???-59?30??????26?-28?30???,???



We give information about South Georgia and the South Sandwich Islands in two main ways. Although there is some overlap, they are largely complementary. The virtual tour (opens in a new window) uses a set of standard headings for each ???



Countries of South America: Argentina ? Bolivia ? Brazil ? Chile ? Colombia ? Ecuador ? Guyana ? Paraguay ? Peru ? Suriname ? Trinidad and Tobago ??? ? Uruguay ? ???

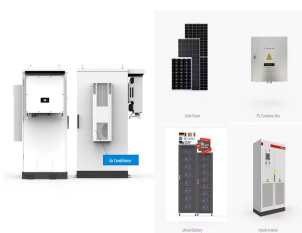


OverviewHistoryLanguagesGeographyClimateGovernmentEconomyEcology

BENNING SOLAR SOUTH GEORGIA AND SOUTH SANDWICH ISLANDS



? 1/4 ?? 1/4 ?South Georgia and The South Sandwich Islands,? 1/4
?SGSSI? 1/4 ?,,,,56?18????-59?30??????26?-28?30??? ???



The South Atlantic island of South Georgia, situated south of the Antarctic Convergence, was the first Antarctic territory to be discovered. [1] It was first visited in 1675 by Antoine de la Roch?, ???



We are planning to decarbonise our Antarctic stations by 2030, including King Edward Point Research Station, owned by the Government of South Georgia and the South Sandwich Islands (GSGSSI) and operated by British Antarctic ???



This Order extends the boundaries of South Georgia and South Sandwich Islands, so as to include, as territorial sea, the sea within twelve nautical miles of the baselines, together with its ???



1. South Georgia is not part of Antarctica. South Georgia and the South Sandwich Islands are a chain of sub-Antarctic islands in the Southern Ocean. They are located more than 2,000km from the continent of Antarctica but the reason ???

BENNING SOLAR SOUTH GEORGIA AND SOUTH SANDWICH ISLANDS



South Georgia and the South Sandwich Islands are a remote group of islands in the southeastern Atlantic Ocean, about 1000 kilometers east of South America. Officially, they belong to Scotland and are a British Overseas Territory. The ???