

# BLACK FAMILY ENERGY STORAGE SYSTEM PRODUCTION



Can energy storage methods be used for black start services? The different energy storage methods can store and release electrical/thermal/mechanical energy and provide flexibility and stability to the power system. Herein, a review of the use of energy storage methods for black start services is provided, for which little has been discussed in the literature.



What challenges impede energy storage-based black start service? First, the challenges that impede a stable, environmentally friendly, and cost-effective energy storage-based black start are identified. The energy storage-based black start service may lack supply resilience. Second, the typical energy storage-based black start service, including explanations on its steps and configurations, is introduced.



What is EPV Energy's new black start facility? When completed in spring 2023, the facility will support EPV Energy's renewable electricity strategy and enable several innovative applications like black start functionality. The facility will have 12MW of power and 12MWh of energy capacity.



Can PV plus storage provide black start services? Evaluation of the Feasibility of PV plus Storage to Provide Black Start Services: Preprint. Golden, CO: National Renewable Energy Laboratory. ??? RTO-Wide Five-Year Selection Process Request for Proposal for Black Start Service. ??? PJM Interconnection, 01-Feb-2018. ??? Technical catalog: High voltage engineered induction motors. ??? [Online].



What is a black start service? Second, the typical energy storage-based black start service, including explanations on its steps and configurations, is introduced. Black start services with different energy storage technologies, including electrochemical, thermal, and electromechanical resources, are compared.

# BLACK FAMILY ENERGY STORAGE SYSTEM PRODUCTION



What is a black-start resource? I. INTRODUCTION A black-start resource is a generation asset that can start without support from the grid. Black-start capability is almost exclusively provided by synchronous machine-based power plants, and the various approaches to black-starting large power systems using these generators are well understood .



The benefits of energy storage systems are striking: drastically reduced reliance on fossil fuels, significant savings on energy bills, and a more resilient power grid. For utilities and large-scale energy users, storage offers a clever way to manage peak loads and delay costly infrastructure upgrades. It's also boosting energy security by



A.I. Advantage. Businesses need to manage all aspects of their energy use to meet current sustainability goals. Our state of the art software systems can help manage a combination of energy storage and energy generation for load-shifting during peak energy consumption periods this is beneficial for both the grid and the budget.



In both emerging and mature markets, storage systems are providing services such as balancing, capacity, frequency response, demand response and black start. Storage systems (both standalone and co-located) may also be used to defer or avoid grid network upgrades, especially where the upgrade is only necessary to relieve constraints at certain



What are Energy storage systems? Energy storage systems are technological setups that store energy generated from various sources for later use. These systems are designed to capture surplus energy during periods of low demand or high production and store it efficiently for subsequent use during peak demand or low production periods.

# BLACK FAMILY ENERGY STORAGE SYSTEM PRODUCTION



When an outage occurs and a black start is needed, battery energy storage systems can deliver the boost that power stations need to get turbines back up and running, thereby minimising the effect on consumers, ???



Review of Black Start on New Power System Based on Energy Storage Technology. Jin Fan 1, Litao Niu 2, Cuiping Li 3, Gang Zhang 2, He Li 3, Yiming Wang 3, Junhui Li 3,\*, Qinglong Song 3, Jiacheng Sun 3, Jianglong Pan 4, Fangfang Lai 4. 1 School of Electronic Engineering, Xi'an University of Posts and Telecommunications, Xi'an, 710061, China 2 Power Plant ???



By definition, a Battery Energy Storage Systems (BESS) is a type of energy storage solution, a collection of large batteries within a container, that can store and discharge electrical energy upon request. The system serves as a buffer between the intermittent nature of renewable energy sources (that only provide energy when it's sunny or windy) and the electricity grid, ensuring a ???



The energy quality determines how efficiently the stored energy of a thermal energy storage system is converted to useful work or energy. The high-quality energy is easily converted to work or a lower-quality form of energy. In this point, an index, energy level (A) is employed for analyzing the energy quality of thermal energy storage systems



Alfen is building Finland's third largest electrical energy storage facility for EPV Energy's Teuva wind farm. When completed in spring 2023, the facility will support EPV Energy's renewable electricity strategy and enable ???

# BLACK FAMILY ENERGY STORAGE SYSTEM PRODUCTION



By establishing a basic output model of the energy storage system and a 30-node power grid system model to configure the capacity of the energy storage system, and analyze the ???



In such a system (see Fig. 4), the role of energy storage from the grid-integrated renewable energy system perspective as proposed in this paper is that, to charge when the electricity demand of a



If you have a surplus in energy production, energy storage solutions can save it for later. In this white paper you will find an overview of energy storage systems and how they help us build a decarbonized energy system. Siemens Energy wins its first black-start battery storage project for power generation in the U.S. June 26, 2020.



energy storage capacity of the system. Therefore, there should be a clear link between renewable sources (utility- or household level) and storage capacities envisaged in the NECPs submitted by the member states. An assessment of the draft NECPs submitted at the end of 2018 reveals, though, that only 11 out



Under many scenarios, fossil fuels will be the dominant energy source until 2050, due to the lack of reliable and convenient renewable energy supply systems 1, whose growing use is causing

# BLACK FAMILY ENERGY STORAGE SYSTEM PRODUCTION



114KWh ESS



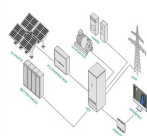
This paper analyzes the new Energy Storage system installed by Enel Distribuzione S.p.A. in the center of Italy into the "Isernia Pilot Project" on Smart Grids, for the operation in black



ENERGY MANAGEMENT SYSTEMS (EMS) 3 management of battery energy storage systems through detailed reporting and analysis of energy production, reserve capacity, and distribution. Equipped with a responsive EMS, battery energy storage systems can analyze new information as it happens to maintain optimal performance throughout variable



As a flexible power source, energy storage has many potential applications in renewable energy generation grid integration, power transmission and distribution, distributed generation, micro grid and ancillary services such as frequency regulation, etc. In this paper, the latest energy storage technology profile is analyzed and summarized, in terms of technology ???



Due to the fluctuating renewable energy sources represented by wind power, it is essential that new type power systems are equipped with sufficient energy storage devices to ensure the stability of high proportion of renewable energy systems [7].As a green, low-carbon, widely used, and abundant source of secondary energy, hydrogen energy, with its high ???



The energy transition and a sustainable transformation of the mobility sector can only succeed with the help of safe, reliable and powerful battery storage systems. The demand for corresponding technologies for electrical energy storage will ???

# BLACK FAMILY ENERGY STORAGE SYSTEM PRODUCTION



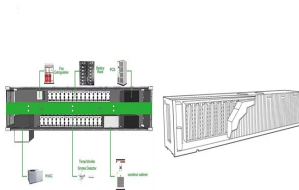
The global energy sector is currently undergoing a transformative shift mainly driven by the ongoing and increasing demand for clean, sustainable, and reliable energy solutions. However, integrating renewable energy sources (RES), such as wind, solar, and hydropower, introduces major challenges due to the intermittent and variable nature of RES, ???



The International Renewable Energy Agency predicts that with current national policies, targets and energy plans, global renewable energy shares are expected to reach 36% and 3400 GWh of stationary energy storage by 2050. However, IRENA Energy Transformation Scenario forecasts that these targets should be at 61% and 9000 GWh to achieve net zero ???



The storage state ( $S_L(t)$ ), at a particular time  $t$ , is the sum of the existing storage level ( $S_L(t-1)$ ) and the energy added to the storage at that time ( $E_S(t)$ ); minus the storage self-discharge, ??, at  $(t-1)$  and the storage discharged energy ( $E_D(t)$ ), at time  $t$ . Energy losses due to self-discharge and energy efficiency (??) are also taken into account.



Continuous energy availability is typically dependent on an energy production system with significant capacity to satisfy the greatest peak demand levels, especially in circumstances when either supply or demand is very volatile. Borehole thermal energy storage systems, typically called closed systems, require fluid pumping, in most



How do battery energy storage systems work? Simply put, utility-scale battery storage systems work by storing energy in rechargeable batteries and releasing it into the grid at a later time to deliver electricity or other grid services. Without energy storage, electricity must be produced and consumed at exactly the same time.



# BLACK FAMILY ENERGY STORAGE SYSTEM PRODUCTION



The combination of energy storage system and new energy unit to realize black start can effectively supplement the amount of black start power and make it possible for parallel recovery of black start, which can effectively improve the black start response ???



In recent years, the production of renewable energy has increased continuously to reduce fossil fuel consumption and CO2 emissions and to increase energy efficiency. The challenge of industries is to integrate renewable energy systems into the existing power system of manufacturing industries. In the energy flexibility approach, the manufacturing energy demand ???



Definitions Automatic Transfer Switch: An electrical device that disconnects one power supply and connects it to another power supply in a self-acting mode. Backup Initiation Device (BID): An electronic control that isolates local power production devices from the electrical grid supply. Backup Mode: A situation where on-site power generation equipment and/or the BESS is ???



Generating green hydrogen efficiently from water and renewable energy requires high-end technology and innovative solutions ??? like our electrolyzer product family from Siemens Energy. Using Proton Exchange Membrane (PEM) electrolysis, our electrolyzer is ideally suited for harnessing volatile energy generated from wind and solar bining high efficiency and high ???



Battery Energy Storage Systems (BESS) are pivotal technologies for sustainable and efficient energy solutions. This article provides a comprehensive exploration of BESS, covering fundamentals, operational mechanisms, benefits, limitations, economic considerations, and applications in residential, commercial and industrial (C& I), and utility ???

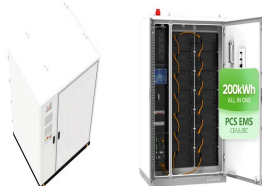
# BLACK FAMILY ENERGY STORAGE SYSTEM PRODUCTION



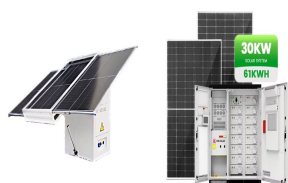
Taking the Photovoltaic-Battery Energy Storage Systems (PV-BESS) as the black-start power source can improve the black-start ability of the regional power grid and broaden the application prospect



A black-start resource is a generation asset that can start without support from the grid [1]. Black-start capability is almost exclusively provided by synchronous machine-based power plants, ???



Power systems are undergoing a significant transformation around the globe. Renewable energy sources (RES) are replacing their conventional counterparts, leading to a variable, unpredictable, and



To achieve the ambitious goals of the "clean energy transition", energy storage is a key factor, needed in power system design and operation as well as power-to-heat, allowing more flexibility