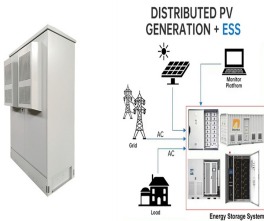


BLOEMFONTEIN SMALL OFF-GRID ENERGY STORAGE POWER STATION



The battery energy storage station (BESS) is the current and typical means of smoothing wind- or solar-power generation fluctuations. Such BESS-based hybrid power systems require a ???



The onboard battery as distributed energy storage and the centralized energy storage battery can contribute to the grid's demand response in the PV and storage integrated fast charging station.



The typical framework of the wind-photovoltaic-shared energy storage power station consists of four parts: wind and photovoltaic power plants, shared storage power station, the grid and the ???



Convert thermal power units to energy storage. Thermal energy storage (TES) is the storage of for later reuse. Employing widely different technologies, it allows surplus thermal energy to be ???



Solar Power system solutions by MetSolar. We provide a professional service for commercial and residential electrical consumers in Africa. from small backup solutions to utility-scale supplementary and off-grid options. View More.

BLOEMFONTEIN SMALL OFF-GRID ENERGY STORAGE POWER STATION



Large energy storage power station. A battery energy storage system (BESS) or battery storage power station is a type of technology that uses a group of to store . Battery storage is the ???



When it comes to living off the grid, having a reliable and efficient battery storage system is essential. Luckily, there are numerous innovative solutions available, from lithium-ion batteries to flow batteries, allowing you to ???



Bloemfontein builds energy storage power station. The Letsatsi Solar Park is a 75- (MW) solar in,, . The solar park uses 277,632 conventional, PV and went fully on line in May 2014. Its annual ???



At 400 watts, it's a great option to power an energy-efficient setup in your off-grid cabin, tiny house, RV, or van. And while it doesn't provide nearly enough power to be able to power multiple appliances, it can easily power ???



Large energy storage power station. A battery energy storage system (BESS) or battery storage power station is a type of technology that uses a group of to store . Battery storage is the ???

BLOEMFONTEIN SMALL OFF-GRID ENERGY STORAGE POWER STATION



While the market for grid batteries is small compared to the other major form of grid storage, pumped hydroelectricity, it is growing very fast. For example, in the United States, the market ???



Off-grid is a type of renewable energy system that enables a home or business to generate and store its own electricity using solar panels and batteries; enabling independent operation from a grid connection. This may entail a solar ???



Being off the grid doesn't mean you must isolate yourself from the world. Many choose to do so to reduce their dependency on "the world", yet isolation isn't a requirement of an off-the-grid lifestyle. Energy Storage Off The ???



Bloemfontein builds energy storage power station. The Letsatsi Solar Park is a 75- (MW) solar in,, . The solar park uses 277,632 conventional, PV and went fully on line in May 2014. Its annual ???



Bloemfontein builds energy storage power station. The Letsatsi Solar Park is a 75- (MW) solar in,, . The solar park uses 277,632 conventional, PV and went fully on line in May 2014. Its annual ???

BLOEMFONTEIN SMALL OFF-GRID ENERGY STORAGE POWER STATION



The video clip shows that the system, i.e. the small-scale distributed power generation using compressed air energy storage "CAES" technology was tested as a ??? More >> ???