

# BMS ENERGY STORAGE COLLECTION LINE



Suitability of Each Topology for Different Applications and Battery Systems. Centralized BMS Topologies; Suitability: Centralized BMS is suitable for smaller battery systems with relatively simple architectures is commonly used in applications where cost and simplicity are essential factors, such as small electric vehicles, portable devices, and low-power energy ???



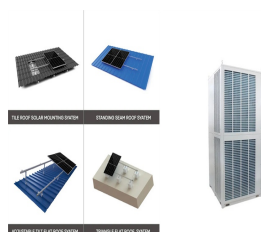
Nevertheless, there will be several BMS failures while using. The failure of BMS for batteries may occur for several reasons, and these main failures can be classified into the following categories. Common BMS Failures And Solutions. A BMS failure can manifest in various ways, each with its own unique set of symptoms and potential causes.



Despite the challenges of scalability, accuracy, reliability, and cost, ongoing advancements in BMS technology promise to enhance the performance and sustainability of energy storage systems. As the demand for clean and reliable energy continues to grow, the role of BMS will become even more critical in shaping the future of energy storage.



Shutdown data storage: When the BMS is powered down, it stores crucial information such as the current SOC and high-level faults. Highlights of MOKOEnergy " s Battery Management Unit Design The subordinate BMU, responsible for the individual cell management layer in the BMS, is composed of battery monitoring chips and their associated circuits.



Grid-side large-scale energy storage, new energy EVs, mobile energy storage: Huasu: 2005: Lead-acid battery BMS, energy storage lithium battery BMS, EV power battery BMS: Qualtech: 2011: Control systems in the new energy market, designing, manufacturing, and selling BMS: Kiclear: 2020: R& D, design, manufacturing, sales, and service of power

# BMS ENERGY STORAGE COLLECTION LINE



3.7se of Energy Storage Systems for Peak Shaving U 32 3.8se of Energy Storage Systems for Load Leveling U 33 3.9ogrid on Jeju Island, Republic of Korea Micr 34 4.1rice Outlook for Various Energy Storage Systems and Technologies P 35 4.2 Magnified Photos of Fires in Cells, Cell Strings, Modules, and Energy Storage Systems 40



Lithium batteries are becoming increasingly important in the electrical energy storage industry as a result of their high specific energy and energy density. The literature provides a comprehensive summary of the major advancements and key constraints of Li-ion batteries, together with the existing knowledge regarding their chemical composition.



With the increasing severity of the global energy crisis and the growing emphasis on environmental protection, energy storage technology has become one of the important means to solve the energy problem. And battery energy storage systems are one of the most common and practical energy storage technologies. In battery energy storage systems



Stationary Energy Storage: Passive BMS finds application in stationary energy storage systems, where cost-effectiveness is a key consideration. Off-Grid Power Systems: In off-grid power systems, passive BMS offers reliable balancing without the need for extensive monitoring and control.



The battery module consists of a smaller energy battery, in order to achieve the specified energy capacity and power output. The core of the BMS is a cell monitoring unit, which connects the management system to the battery module by providing data on each battery, including voltage, current, and temperature.



2 ? From Energy Storage Systems designed to reduce electricity costs and cover you during power outages, to off-grid and vehicle conversion kits to keep you self-sufficient on the road or at sea, and neat, all-in-one electric fence kits to protect your livestock, at BMS Technologies, we're all

# BMS ENERGY STORAGE COLLECTION LINE

---

about making things simple for our customers. Unsure what you need?

# BMS ENERGY STORAGE COLLECTION LINE



Understanding Energy Storage BMS. Energy storage Battery Management Systems (BMS) are integral components of energy storage systems, responsible for managing and monitoring battery performance. A BMS plays a crucial role in ensuring the efficient operation of the battery pack, optimizing its performance, and extending its lifespan.



Energy Storage BMS, an abbreviation for Energy Storage Battery Management System, is a pivotal component in energy storage setups. Unlike traditional battery management systems, which primarily focus on individual cell management, Energy Storage BMS is tailored for large-scale applications. It encompasses a robust suite of hardware and software



Energy storage plays a crucial role in today's world, allowing us to harness and utilize renewable energy sources efficiently. Within an energy storage system, the Battery Management System (BMS) acts as the brain, ensuring the optimal performance, safety, and longevity of the storage battery. In this comprehensive guide, we will delve into the intricacies of BMS architecture, its ???



and connects it to the DC bus of the energy storage system. The Battery Control Panel aggregates the battery stacks and acts as a central control hub for the PCS and other ESS controllers. High-Voltage BMS Nuvation Energy's Low-Voltage BMS (11 ??? 60 VDC) is used in commercial and residential energy storage applications,



The result is an average 25% reduction in the cost per kilowatt-hour footprint of the BMS (over the Nuvation Energy G4 BMS, based on a 1500 V DC energy storage system). The G5 BMS is UL 1973 Recognized for Functional Safety and is CE Compliant.

# BMS ENERGY STORAGE COLLECTION LINE



The operating environment characteristics of the energy storage system have special requirements for energy storage BMS: 1. For general energy storage systems, in a limited space, the energy



Battery Management Systems (BMS) are integral to Battery Energy Storage Systems (BESS), ensuring safe, reliable, and efficient energy storage. As the "brain" of the battery pack, BMS is responsible for monitoring, managing, and optimizing the performance of batteries, making it an essential component in energy storage applications.



Gigawatt-hours of used EV batteries are now hitting the market, and California-based Element Energy claims it has the ideal BMS platform to scale second life energy storage technology. The firm recently raised a US\$28 million Series B to accelerate the scale-up of its second life solution and proprietary battery management system (BMS) platform



2.1 Communication between energy storage BMS and EMS. BAMS uses a 7-inch display screen to display the relevant information of the entire PCS battery pack unit, and transmits the relevant information to the monitoring system EMS via Ethernet (RJ45). The information content includes battery cell information, battery pack information, and battery



As one of the most professional energy storage companies in China, Enerlution Battery has been specialized in LFP battery manufacturing for 7 years, including commercial battery storage systems and household energy storage system, we also can provide bms solution. They are all manufactured according to the strictest international standards.



BMS configurations differ from simple devices for small consumer electronics to high-power solutions for large energy storage systems. Within our power electronics design services, we created battery management solutions of varying difficulty, ranging from a simple BMS to

# BMS ENERGY STORAGE COLLECTION LINE

---

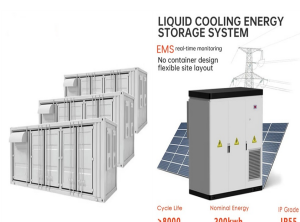
a state-of-the-art device integrated into a larger energy storage system.

# BMS ENERGY STORAGE COLLECTION LINE

---



Data immediateness: Since MOKOEnergy's wireless distributed BMS has data collection and processing functions in each battery cell or module, Energy storage system: Wireless BMS is widely used in energy storage systems, such as solar battery packs and wind energy storage. It can realize intelligent balancing and optimize energy management



This is critical for the thermal management of the battery to help prevent thermal runaway. A well-designed BMS is a vital battery energy storage system component and ensures the safety and longevity of the battery in any lithium BESS. The below picture shows a three-tiered battery management system. This BMS includes a first-level system main



tional and environmental tests, the high density energy storage equipment which the BMS was fully independent developed in tethered aerostat has being used on line more than 2 years. The various functions of the BMS like online charge/discharge, uninterruptible power supply met the design requirements. Keywords