

BOTSWANA FLYWHEEL ENERGY STORAGE



The anatomy of a flywheel energy storage device. Image used courtesy of Sino Voltaics . A major benefit of a flywheel as opposed to a conventional battery is that their expected service life is not dependent on the number of charging cycles or age. The more one charges and discharges the device in a standard battery, the more it degrades.



A review of energy storage types, applications and recent developments. S. Koochi-Fayegh, M.A. Rosen, in Journal of Energy Storage, 2020 2.4 Flywheel energy storage. Flywheel energy storage, also known as kinetic energy storage, is a form of mechanical energy storage that is a suitable to achieve the smooth operation of machines and to provide high power and energy ???



Falcon Flywheels is an early-stage startup developing flywheel energy storage for electricity grids around the world. The rapid fluctuation of wind and solar power with demand for electricity creates a need for energy storage. Flywheels are an ancient concept, storing energy in the momentum of a spinning wheel.



Flywheel Energy Storage System (FESS) Revterra Kinetic Stabilizer Save money, stop outages and interruptions, and overcome grid limitations. Sized to Meet Even the Largest of Projects. Our industrial-scale modules provide 2 MW of power and can store up to 100 kWh of energy each, and can be combined to meet a project of any scale.



The flywheel energy storage system (FESS) offers a fast dynamic response, high power and energy densities, high efficiency, good reliability, long lifetime and low maintenance requirements, and is particularly suitable for applications where high power for short-time bursts is demanded. FESS is gaining increasing attention and is regarded as a

BOTSWANA FLYWHEEL ENERGY STORAGE



Flywheel energy storage systems are considered to be an attractive alternative to electrochemical batteries due to higher stored energy density, higher life term, deterministic ???



Switzerland-headquartered battery and storage system provider Leclanch? emailed Energy-Storage.news this week to announce that what began as a small-scale pilot of the twinned technologies has now gone to grid part-owned by flywheel manufacturer and supplier S4 Energy. S4's partner in the JV is a local government-owned entity



The flywheel energy storage operating principle has many parallels with conventional battery-based energy storage. The flywheel goes through three stages during an operational cycle, like all types of energy storage systems: The flywheel speeds up: this is the charging process. Charging is interrupted once the flywheel reaches the maximum



The Winners Are Set to Be Announced for the Energy Storage Awards! Energy Storage Awards, 21 November 2024, Hilton London Bankside. Book Your Table. A project in China, claimed as the largest flywheel energy storage system in the world, has been connected to the grid. US real estate developer Gardner to host VPP-connected flywheels and



The main components of a typical flywheel. A typical system consists of a flywheel supported by rolling-element bearing connected to a motor???generator. The flywheel and sometimes motor???generator may be enclosed in a vacuum chamber to reduce friction and energy loss.. First-generation flywheel energy-storage systems use a large steel flywheel rotating on mechanical ???

BOTSWANA FLYWHEEL ENERGY STORAGE



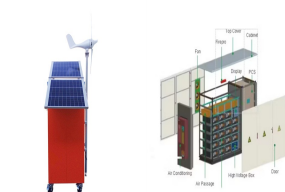
One energy storage technology now arousing great interest is the flywheel energy storage systems (FESS), since this technology can offer many advantages as an energy storage solution over the



NASA G2. ? 1/4 ?? 1/4 ? Flywheel energy storage, ? 1/4 ? FES? 1/4 ?, ? 1/4 ?? 1/4 ?, ??? ,, ? 1/4 ?,



Energy storage flywheel systems are mechanical devices that typically utilize an electrical machine (motor/generator unit) to convert electrical energy in mechanical energy and vice versa. Energy is stored in a fast-rotating mass known as the flywheel rotor. The rotor is subject to high centripetal forces requiring careful design, analysis, and fabrication to ensure the safe ???



Energy storage systems (ESSs) are the technologies that have driven our society to an extent where the management of the electrical network is easily feasible. The balance in supply ???



A flywheel energy storage system employed by NASA (Reference: wikipedia) How Flywheel Energy Storage Systems Work? Flywheel energy storage systems employ kinetic energy stored in a rotating mass to store energy with minimal frictional losses. An integrated motor???generator uses electric energy to propel the mass to speed. Using the same

BOTSWANA FLYWHEEL ENERGY STORAGE

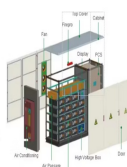
APPLICATION SCENARIOS



NASA G2. ? 1/4 ?? 1/4 ? Flywheel energy storage,? 1/4 ?FES? 1/4 ?,? 1/4 ?? 1/4 ?,??? ,,? 1/4 ?,



Flywheel technology has the potential to be a key part of our Energy Storage needs, writes Prof. Keith Robert Pullen: Electricity power systems are going through a major transition away from centralised fossil and nuclear based generation towards renewables, driven mainly by substantial cost reductions in solar PV and wind.



Today, flywheel energy storage systems are used for ride-through energy for a variety of demanding applications surpassing chemical batteries. A flywheel system stores energy mechanically in the form of kinetic energy by spinning a mass at high speed. Electrical inputs spin the flywheel rotor and keep it spinning until called upon to release



As a subsidiary of Hydro-Qu?bec, North America's largest renewable energy producer, working with large-scale energy storage systems is in our DNA. We're committed to a cleaner, more resilient future with safety, service, and sustainability at the forefront ??? made possible by decades of research and development on battery technology.



The core element of a flywheel consists of a rotating mass, typically axisymmetric, which stores rotary kinetic energy E according to (Equation 1) $E = \frac{1}{2} I \omega^2$ [J], where E is the stored kinetic energy, I is the flywheel moment of inertia [kgm²], and ω is the angular speed [rad/s]. In order to facilitate storage and extraction of electrical energy, the rotor ???



Flywheel Energy Storage (FES) systems refer to the contemporary rotor-flywheels that are being used across many industries to store mechanical or electrical energy. Instead of using large iron wheels and ball bearings, advanced FES systems have rotors made of specialised

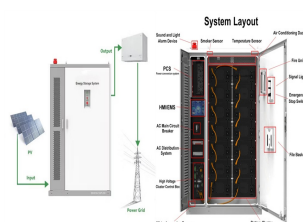
BOTSWANA FLYWHEEL ENERGY STORAGE

high-strength materials suspended over frictionless magnetic bearings

BOTSWANA FLYWHEEL ENERGY STORAGE



Thanks to the unique advantages such as long life cycles, high power density and quality, and minimal environmental impact, the flywheel/kinetic energy storage system (FESS) is gaining steam recently.



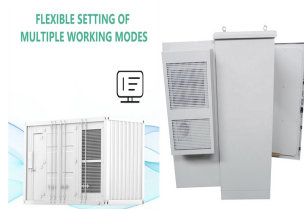
This paper presents an overview of the flywheel as a promising energy storage element. Electrical machines used with flywheels are surveyed along with their control techniques. Loss minimization



US Patent 5,614,777: Flywheel based energy storage system by Jack Bitterly et al, US Flywheel Systems, March 25, 1997. A compact vehicle flywheel system designed to minimize energy losses. US Patent 6,388,347: Flywheel battery system with active counter-rotating containment by H. Wayland Blake et al, Trinity Flywheel Power, May 14, 2002. A



OverviewMain componentsPhysical characteristicsApplicationsComparison to electric batteriesSee alsoFurther readingExternal links

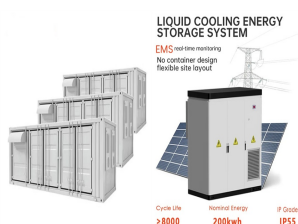


Flywheel energy storage (FES) is a technology that stores kinetic energy through rotational motion. The stored energy can be used to generate electricity when needed. Flywheels have been used for centuries, but modern FES systems use advanced materials and design techniques to achieve higher efficiency, longer life, and lower maintenance costs.

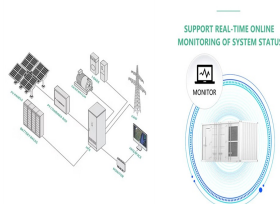
BOTSWANA FLYWHEEL ENERGY STORAGE



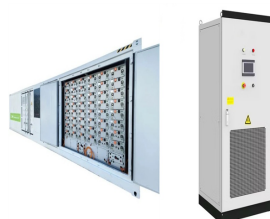
The Winners Are Set to Be Announced for the Energy Storage Awards! Energy Storage Awards, 21 November 2024, Hilton London Bankside. Book Your Table. Amber Kinetics makes a flywheel capable of four hours" energy storage duration. It is already commercially available, endures no capacity degradation unlike lithium and other battery types



The flywheel energy storage system (FESS) offers a fast dynamic response, high power and energy densities, high efficiency, good reliability, long lifetime and low maintenance requirements, and is



Convergent Energy + Power, a US-Canadian project developer which has attracted investment from the venture capital arm of Statoil, has acquired 40MW of flywheel energy storage already in operation in grid-balancing ???



Flywheel energy storage systems (FESS) employ kinetic energy stored in a rotating mass with very low frictional losses. Electric energy input accelerates the mass to speed via an integrated motor-generator. The energy is discharged by drawing down the kinetic energy using the same motor-generator. The amount of energy that can be stored is