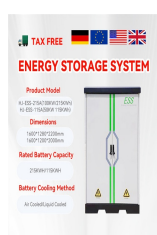


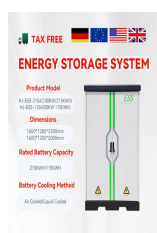
# BOTSWANA POWER GENERATION SIDE ENERGY STORAGE



How is electricity generated in Botswana? Currently, in Botswana electricity is primarily generated from domestic coal resources. Apart from coal-bed methane, there are no proven reserves of other possible fossil fuel resources for energy generation like natural gas or oil. Botswana has large coal reserves, estimated to be in excess of 200 billion tons.



Can waste-to-energy be developed in Botswana? Under the patronage of the Ministry of Mineral Resources, Green Technology and Energy Security, a feasibility study is ongoing regarding the development of waste-to-energy in Botswana. Current findings indicate gaps related to the absence of Integrated Waste Management Plans and challenges related to revenues and costs.



Does Botswana have hydro power? There is no hydro power potential in Botswana. The existing power generation system of Botswana is based on fossil fuels and consists of two coal-fired power plants and two diesel generators. The bulk of electricity produced locally comes from the coal-fired plant Morupule B, with the other coal-fired power plant being Morupule A.



What is integrated energy planning in Botswana? Integrated Energy Planning and developing an Integrated Resource Plan (IRP) are an integral part of the energy planning process in Botswana as guided by its 11th National Development Plans (NDP 11) and other sector policies and ambitions. In the energy sector, the NDP 11 focuses on increasing self-reliance on the country's energy resources.



What is Botswana's energy potential? For Botswana, the following technical potentials were identified: Wind (high capacity factor) ??? 1 152 MW. The least-cost analysis estimated a potential of 199 MW from renewable energy, 139 MW of which in utility-scale projects and 60 MW of-grid. The firm reserve margin would reach 23% in 2030, with zero net imports.

# BOTSWANA POWER GENERATION SIDE ENERGY STORAGE



Where does Botswana get its power? To meet its peak power demand, Botswana imports power from the Southern Africa Power Pool (SAPP) ??? mainly from South Africa ??? and when imports are not available, resorts to the use of costly backup diesel power plants.



The study utilizes the Open-Source Energy Modelling System (OSeMOSYS) to explore cost-effective renewable energy strategies to meet Botswana's Nationally Determined Contributions ???



Achieving the integration of clean and efficient renewable energy into the grid can help get the goals of "2030 carbon peak" and "2060 carbon neutral", but the polymorphic uncertainty of renewable energy will bring influences to the grid. Utilizing the two-way energy flow properties of energy storage can provide effective voltage support and energy supply for the grid. Improving ???



Facilitating the transition from coal and diversifying sources of electricity generation. Meeting Botswana's shortfall in electricity supply and contributing to decarbonisation. Creating a large Southern Africa energy/industrial hub suitable for manufacturing renewable energy and energy storage products, new-age materials, and products



Country after country is climbing onto the solar PV bandwagon and, even in Africa, there is some progress, particularly in South Africa. As part of its Renewable Energy Independent Power Producers Programme (REIPPP), South Africa has implemented 1059 MW of PV solar projects, with an additional 1255 MW under construction or in development. This ???

# BOTSWANA POWER GENERATION SIDE ENERGY STORAGE



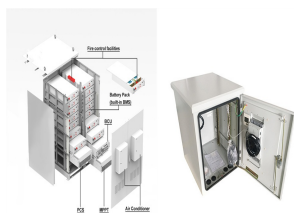
In this study, the model proposed by Wu et al. [10] is improved by adding the power-side energy storage, mainly focusing on (1) how to build a multi-cycle power system model with energy storage at the generation side; (2) how to reflect the interaction of non-cooperative decision-makers in dynamic power networks; and (3) to compare how energy



of energy for generation, transmission and roads, distance to load centers) for each zone will be Electricity generation attributes: Estimated annual average electricity generation in MWh for the following: A) Electricity\_generation\_discounted\_MWhPerYr without storage, assuming a 90% land use discount factor.



Botswana is set to transform its energy landscape with a \$78M solar plant in Jwaneng. Discover how this project will drive sustainability, create jobs, and shape the future of clean energy. Botswana has relied heavily on coal for its electricity generation. However, the government has recognized the imperative to diversify its energy

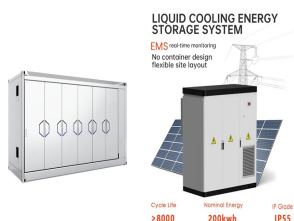


Second, the energy storage operation model of the power supply side under the high proportion of wind power access is established, and the impact of new energy access on the system balance and

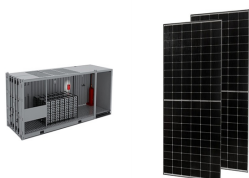


To fully utilize solar energy, we need electricity storage in batteries to provide power for the nighttime and when it is cloudy. Unlike grid-scale electricity generation from large PV plants, grid-scale battery storage is still in its infancy. It is complicated and very expensive.

# BOTSWANA POWER GENERATION SIDE ENERGY STORAGE



This new World Bank project will finance the necessary grid investment and Botswanas first 50MW utility-scale battery energy storage system to enable the first wave of renewable energy ???



To tackle these challenges, a proposed solution is the implementation of shared energy storage (SES) services, which have shown promise both technically and economically [4] incorporating the concept of the sharing economy into energy storage systems, SES has emerged as a new business model [5]. Typically, large-scale SES stations with capacities of ???



The application prospects of shared energy storage services have gained widespread recognition due to the increasing use of renewable energy sources. However, the decision-making process for connecting different renewable energy generators and determining the appropriate size of the shared energy storage capacity becomes a complex and ???



A Power Generation Side Energy Storage Power Station Evaluation Strategy Model Based on the Combination of AHP and EWM to Assign Weight Chun-yu Hu 1,a, Chun-lei Shen 1,b, Yi-fan Zhou 1,c, Ze-zhong Kang 2,d\* ae-mail: 15811286985@139 , be-mail: shenchunlei@sgecs.sgcc .cn, ce-mail: Zhouyifan@sgecs.sgcc .cn\* Corresponding ???



To make the power generation more flexible, the state has been taking measures: building peaking power sources such as gas power plants and hydropower plants, undertaking the renovation of coal-fired units, and building energy storage systems [3-6].

# BOTSWANA POWER GENERATION SIDE ENERGY STORAGE



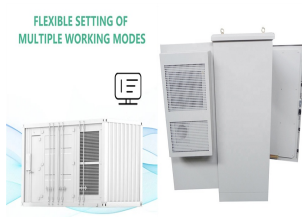
These figures reflect energy consumption ??? that is the sum of all energy uses including electricity, transport and heating. Many people assume energy and electricity to mean the same, but electricity is just one component of total energy consumption. We look at electricity consumption later in this profile.



With the strong support of national policies towards renewable energy, the rapid proliferation of energy storage stations has been observed. In order to provide guidance for the operational management and state monitoring of these energy storage stations, this paper proposes an evaluation framework for such facilities.



Dumelang\*. In my previous post, I took a good hard look at why there is so little photovoltaic (PV) solar power generation in Botswana and shared with you some of the complexities involved in implementing large-scale solar here. Botswana does have an impressive solar resource, but its exploitation requires a great number of tradeoffs. As a result, there are a limited number of ???



Microgrids, depending on specific objectives and availability of local resources, are powered by a variety of power generation types and often combine coordinate and control renewable energy sources such as wind and solar photovoltaics (PV); with high efficiency gas engines and combined heat and power (CHP) systems, that can be fuelled by



Concentrating solar power, where the energy of sunlight is focused by mirrors onto a focal point. The focused sunlight heats a fluid that is used to generate steam, which then turns a turbine to generate electricity. Photovoltaic generation of ???

# BOTSWANA POWER GENERATION SIDE ENERGY STORAGE



I have examined the 2013 electricity generation figures for Botswana that were published in the Botswana Power Corporation (BPC) 2013 Annual Report and have combined, in one table, the generating units, their combined power, the energy produced from these units, the calculated capacity factors, and the overall capacity factor for the combined



In November, government-owned Kenya Electricity Generating Company (KenGen) was selected to deploy an energy storage pilot project in that country by the World Bank, while a few days ago Somalia's Ministry of Energy and Water Resources (MoEWR) launched a World Bank-supported tender for 46 solar and storage off-grid power plants with ???



sourced from the Botswana Power Corporation. This statistical brief is intended to apprise on Electricity Generation, Importation and Distribution by presenting Monthly, Quarterly and Yearly Volumes as well as Indices for Electricity Generation in Botswana. Also included are Year-on-Year and Quarter-on-Quarter Percentage Changes in Indices



The energy storage power station on the side of the Zhenjiang power grid played a significant role in balancing power generation and consumption during the peak summer season in the Zhenjiang area in 2018. Jiangsu Province, which was put into operation on July 18, 2018, is 101 MW/202 MW ??? h. It is a typical grid side energy storage power



Evaluation Model and Analysis of Lithium Battery Energy Storage Power Stations on Generation Side. Qian Xu 1, Lijun Zhang 1, Yikai Sun 1, Yihong Zhang 1, Yingxin Liu 2 and Mingzhu Li 2. This paper analyses the indicators of lithium battery energy storage power stations on generation side. Based on the whole life cycle theory, this paper



# BOTSWANA POWER GENERATION SIDE ENERGY STORAGE



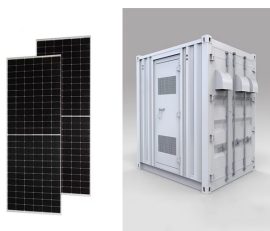
Botswana Figure 1: Energy profile of Botswana Figure 2: Total energy consumption, (ktoe) Figure 3: Total energy consumption, (ktoe) Table 1: Botswana's key indicators (IEA, 2016) Source: (AFREC, 2015) Source: (AFREC, 2015) Energy Consumption and Production By 2013, Botswana had a small population of only 2.02 million people (Table 1) (IEA, 2016).



Energy storage can provide support services to the electricity grid, or to an individual consumer behind-the-meter. Energy storage may be deployed as stand-alone systems or with power generation as part of a hybrid energy system or microgrid scheme. Energy storage is flexible, dispatchable and readily deployable at electricity grid level.



Electricity generation sources consisted of 97% coal, 2.5% oil, and 0.5% solar [12]. Figure 1. Final Energy consumption by sector in Botswana in 2020 out of a 70PJ total. 1.2 Botswana's Energy



Assessing Generation-Side Energy Storage's Comprehensive Value and Policy Support Needed for Scale-up Under China's Dual Carbon Goals 2023-08 SOURCE? 1/4 ?Natural Resources Defense Council To achieve China's carbon emissions peaking and carbon neutrality goals, it is imperative for the power industry to transition towards a renewable energy



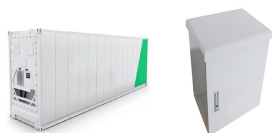
Power generation in Botswana for export by an IPP is permitted by the 2007 Amendment to the Electricity Supply Act. To create a more enabling environment, the government set up an energy regulator, the Botswana Energy Regulatory Authority (BERA), which began operating in September 2017. demand side measures; (ii) energy efficiency

# BOTSWANA POWER GENERATION SIDE ENERGY STORAGE



## 4 ELECTRICITY GENERATION AND DISTRIBUTION Statistics

BotswanaStats Brief, First Quarter 2024 1.0 Summary of Findings on the Index of Electricity Generation (IEG) All figures in this report are not seasonally adjusted. The Index of Electricity Generation (IEG) stood at 188.2 during the first quarter of 2024 compared to 211.9 recorded during the same period in 2023, ???



Our capabilities range from the supply of a gas-fuelled power generation engine, through to the turnkey installation of a multi-engine power plant. Gas engines can be combined with other technologies such as storage, wind and solar power for hybrid power generation. Contact Us. C/o Clarke Energy South Africa PostNet Box #120 Private Bag X5