

CALCULATION OF SOLAR POWER GENERATION SYSTEM



of a solar PV system has efficiency losses. System wiring has efficiency losses. Available online PV system sizing programs will factor in these efficiency losses when making calculations for system sizing. The solar industry refers to these as derate factors. Examples of specific derate factors include: inverter efficiency, module power



Renewable energy with the largest power generation capacity installed is wind power; however, solar energy is growing at a faster rate than any other form of renewable energy. Solar energy is available everywhere in the world; it is considered inexhaustible and has a higher annual generation potential than the annual electricity generation worldwide.



TC = Total cost of the solar system (\$) PC = Power capacity of the solar system (W) If your system cost \$10,000 and has a power capacity of 5kW (5000W): $CPW = 10000 / 5000 = \$2/W$ 44. Solar Array Ground Coverage Ratio (GCR) ???



For China, some researchers have also assessed the PV power generation potential. He et al. [43] utilized 10-year hourly solar irradiation data from 2001 to 2010 from 200 representative locations to develop provincial solar availability profiles was found that the potential solar output of China could reach approximately 14 PWh and 130 PWh in the lower ???



Determine your solar power potential and estimate energy output with our solar power generation calculator tailored for India's climate conditions. They can also guess the output of their solar system. The calculator looks at things like how efficient your solar panels are, their power, and the cost of putting them in.

CALCULATION OF SOLAR POWER GENERATION SYSTEM



Globally a formula $E = A \times r \times H \times PR$ is followed to estimate the electricity generated in output of a photovoltaic system. E is Energy (kWh), A is total Area of the panel (m²), r is solar panel yield (%), H is annual average solar radiation on tilted panels and PR = Performance ratio, constant for losses (range between 0.5 and 0.9, default value = 0.75).



How to Calculate Solar Panel KWp. Before learning how to calculate solar panel KWp, you should learn what is KWp in a solar panel. In simple terms, KWp refers to the maximum power output capability of a solar ???



r is the yield of the solar panel given by the ratio : electrical power (in kWp) of one solar panel divided by the area of one panel. Example : the solar panel yield of a PV module of 250 Wp with an area of 1.6 m² is 15.6%. Be aware that this nominal ratio is given for standard test conditions (STC) : radiation=1000 W/m², cell temperature=25 celcius degree, Wind speed=1 m/s, AM=1.5.

APPLICATION SCENARIOS



Off-grid Solar Power System Calculator. Our simple off grid solar system sizing calculator is a good start to help ascertain viability of your project. Generator or backup power supply. Our Most Popular Off-grid Solar Kits for Homes. Add to Wishlist. 1720W, 24V, 5.0kWh Professional Off-Grid Solar Kit



NREL's PVWatts (R) Calculator Estimates the energy production of grid-connected photovoltaic (PV) energy systems throughout the world. It allows homeowners, small building owners, installers and manufacturers to easily develop estimates of ???

CALCULATION OF SOLAR POWER GENERATION SYSTEM



The Recommended capacity for Rooftop Solar Plant as per your inputs is:
Calculation is indicative in nature. Actual numbers may vary. Maximum capacity for availing subsidy is 10kW. Generation. Financial Savings. or . Emission Savings (in ???)



PV*SOL online is a free tool for the calculation of PV systems. Made by Valentin Software, the developers of the full featured market leading PV simulation software PV*SOL, this online tool lets you input basic data like location, load profiles, solar power (photovoltaic, PV) module data, Inverter manufacturer. We then search for the optimal connection of your PV modules and the ???



A solar panel system's production ratio is the ratio of the estimated energy output of a system over time (in kWh) to the system size (in W). These numbers are rarely 1:1. Your production ratio will change depending on how much sunlight your system gets (primarily based on your geographic location but also influenced by roof angle and directional orientation).



See your Electricity Generation over the Year. Enter your annual generation figure or estimated figure from your MCS certificate into the box below and click "Calculate". You will see a breakdown of estimated generation across the ???



12.1 Calculation of System Battery Capacity. Battery capacity (Ah)=safe number of times x Average daily power consumption of load (Ah) x Maximum consecutive rainy days x Low temperature correction ???

CALCULATION OF SOLAR POWER GENERATION SYSTEM



A solar power calculator serves as a valuable tool for residential and industries interested in transitioning to solar energy. It tells you things for making good choices about using the sun for power. The solar calculator will also help you understand several key elements of installing solar panel systems, such as: Choose your goal



Inputting the data into the solar panel calculator shows us that to offset 100% of electricity bills, we need a solar array producing 7.36 kW, assuming an environmental factor of 70%. The average installation cost for an 8 kW system is \$25,680.



This generator can be connected to an inverter to transform continuous current in alternative current 3-phase or single phase and connected to the grid or to a storage system. Formula to calculate PV energy. How to calculate annual output energy of a solar photovoltaic (PV) system? The simplest formula is : Where :



The calculation of solar panel kWh is dependent on several parameters that affect overall power generation. The output of a solar panel is commonly measured in watts (W), which represents the theoretical power ???



The size of the system refers to the actual solar power calculations a person may hope to get from the panels. Calculating solar array output with a solar power calculator or the following equations, gives you an idea about the units needed ???

CALCULATION OF SOLAR POWER GENERATION SYSTEM



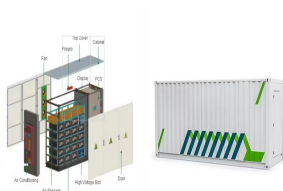
The daily kWh generation of a solar panel can be calculated using the following formula: The power rating of the solar panel in watts x ???
Average hours of direct sunlight = Daily watt-hours. Consider a solar panel ???



Factor in System Efficiency. Solar panels and the overall system (including the inverter) have efficiency losses. These can be due to the conversion of DC electricity to AC, losses due to heat, and inefficiencies in the panels themselves. A conservative estimate is that system efficiency might be around 75% to 85%. 4. Annual Energy Output



Cost advantages - Solar power systems lower your utility bills and insulate you from utility rate hikes and price volatility due to fluctuating energy prices. They can be used as building materials. They can increase character and value of the building. Purchase of a solar power system allows you to take advantage of available tax and financial



Discover the perfect solar solution tailored for your home with Enphase system estimator. Estimate solar system size with or without battery back up. Connect with expert installers. The solar panel and storage sizing calculator allows you to input information about your lifestyle to help you decide on your solar panel and solar storage



Step 3: Calculate the capacity of the Solar Battery Bank. In the absence of backup power sources like the grid or a generator, the battery bank should have enough energy capacity (measured in Watt-hours) to sustain ???

CALCULATION OF SOLAR POWER GENERATION SYSTEM



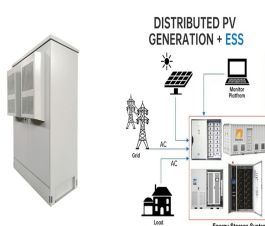
??? Photovoltaic System Lifespan: This is the expected lifespan of the photovoltaic system in years. This is used to calculate the effective cost of electricity for the system. If the photovoltaic system lasts longer, the cost of electricity will be proportionally lower. Power purchase agreements with grids are generally for 20 years.



Use our solar panel calculator to get an idea of how much you could save by installing a solar photovoltaic (PV) system at home. Use the calculator . Based on the information you provide, the solar panel calculator will estimate: What size solar panel system is right for you. How much you could save on your electricity bills.



In this example, the calculator estimates that I need a 4.7 kW solar system ??? which works out to 14 350-watt solar panels ??? to cover 100% of my annual electricity usage with solar. 7. Click "Get a Free Solar Quote" to get ???



Under the CDM standard, the calculation of carbon certificates for a solar power plant might look like this: Calculate Emissions Reduction: Assume the solar power plant has a capacity of 1 MW and