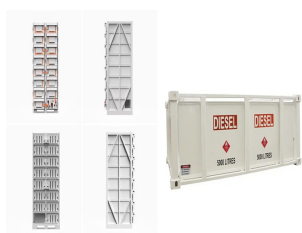


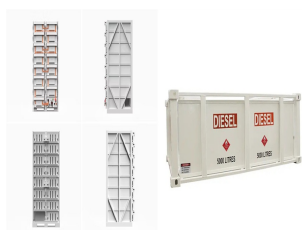
# CAN PHOTOVOLTAIC BRACKET INSTALLATION BE DONE IN 7 MINUTES



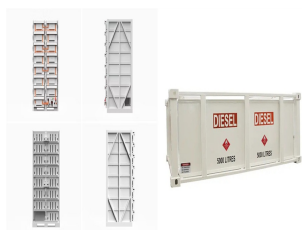
Why should you install a solar panel bracket? The purpose of installing the bracket is to better fix the solar panel. If there is a more convenient and feasible method to fix the solar panel. PVMars will definitely recommend it to you, and effective solutions are based on solar panels' characteristics and your on-site installation environment.



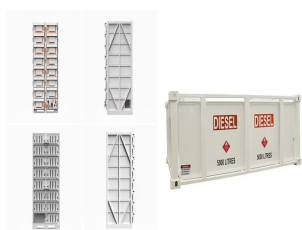
How do I install a fixing bracket on a solar panel? Attach the Fixing Bracket to the Solar Panel. 3. Attach the Fixing Bracket to the Solar Panel's Mounting Hole. 4. Attach the Other Leg of the Fixing Bracket. 5. Attach the Adjustable Bracket to the Fixing Bracket. 6. Connect Multiple Panels (Optional). If you've decided to reduce your reliance on the grid and switch to solar, congratulations!



How to install a solar panel? The first step is to attach the fixing bracket to the solar panel. Lay the solar panel face-down on the tarp or canvas to protect the photovoltaic surface. You want to be sure the mounting holes on the back of the panel align with the holes in the fixing bracket. Don't modify the module frame because doing so may void your manufacturer's warranty.

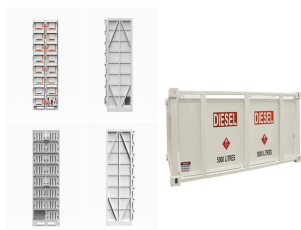


How to install rigid solar panels on a roof? EcoFlow's rigid solar panels come with a Tilt Mount Bracket for easy rooftop installation. The components include four fixing brackets, two adjustable brackets, and screws. This should be all you need to mount rigid solar panels on the roof or any other flat surface on your home that receives direct sunlight.

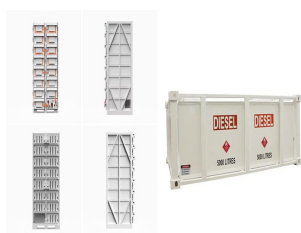


Should solar panels be installed at an angle? Solar panels should be installed at an angle to allow the cells to receive as much sunlight as possible. This bracket setup guide is designed specifically for installation on the rooftops of RVs, campers, and other recreational vehicles. But you can install the bracket mounts on any flat surface.

# CAN PHOTOVOLTAIC BRACKET INSTALLATION BE DONE IN 7 MINUTES



Do I need planning permission to install solar panels on my roof? When considering the installation of solar panels on your roof, it's critical to understand if you need permission. In the UK, solar panel installations often fall under a Permitted Development, meaning you typically won't need planning permission.



Solar photovoltaic (PV) mounting bracket is the "skeleton" supporting solar PV modules, whose performance directly affects the operation stability, power generation efficiency and return on



Different types of solar panel mounts cater to various installation requirements and environmental conditions. If you understand the different types of mounting, you can choose the most suitable mount for a specific solar project. Fixed Mounts: The Basics. Fixed mounts are the simplest and most cost-effective type of solar mounts.

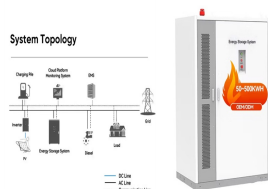


4. Here's a guide that will help you know everything essential about the PV panel mounting brackets or solar panel brackets- necessities, benefits, types, material components, and probable solar systems, essential few things to consider while choosing the right type, a?



the PV modules. Do not lift the PV module by grasping the module's junction box or electrical leads. Do not stand or step on the PV modules or place heavy objects onto it. Do not drop the PV module or allow objects to fall on the PV module. Do handle with care when moving, transporting and installing the PV modules.

# CAN PHOTOVOLTAIC BRACKET INSTALLATION BE DONE IN 7 MINUTES



Racking installation method: divided from the connection method, the solar energy system installation can be simply divided into welding and assembling type two kinds. Welded bracket has low requirements on the production process of steel sections (angles), good connection strength and low price, which is the commonly used bracket connection form in the a?|



efficient installation making it very resistant and long lasting. This system is also compatible with most PV-Modules in the market. This installation manual must be read carefully prior carrying any installation. The manual provides the following content: (1) simple introduction of installation and (2) product installation specification.



**EASY INSTALLATION:** These solar mounts have simple structure, which can greatly improve the efficiency of on site installation and save time and labor. 10PCS IN 1 SET: Including 10pcs L foot photovoltaic brackets, with glossy finish, sufficient quantity for easy installation and replacement. a?o See more product details



In order to achieve the effective use of resources and the maximum conversion rate of photovoltaic energy, this project designs a fixed adjustable photovoltaic bracket structure which is easy to adjust and disassemble, and compares the advantages and disadvantages of existing photovoltaic brackets in actual use, proposes an innovative and optimized design, and uses a?|



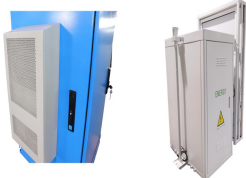
PV panels mounted on roof Workers install residential rooftop solar panels. The solar array of a PV system can be mounted on rooftops, generally with a few inches gap and parallel to the surface of the roof. If the rooftop is horizontal, the array is mounted with each panel aligned at an angle. If the panels are planned to be mounted before the construction of the roof, the roof can a?|

# CAN PHOTOVOLTAIC BRACKET INSTALLATION BE DONE IN 7 MINUTES

TAX FREE



A durable, 2mm thick stainless steel bracket enable secure and easy installation of photovoltaic panels on a Metrotile roof system. The brackets have been specially designed to be screwed into the rafter centres and sit between the lapping tiles without kicking-up the tiles; reducing the need to screw through the tiles, invalidating the guarantee.



Here's an in-depth look at each step of the installation process:  
Assessment: Evaluate the structural integrity of the balcony to ensure it can support the weight of the photovoltaic system. Analyze sunlight exposure a?



Component mechanical mounting holes should be guaranteed to fall near the two main keels, so when installing the bracket, make sure that the spacing between the two main keels of the bracket is 867-1067mm. 2. Photovoltaic bracket is grounded by 40\*4 mm galvanized flat iron. Eight steps to install a bracket on a concrete surface or flat roof. 1.

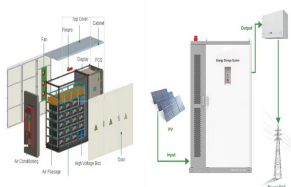


Then, an actual PV bracket system is used as the numerical example. The lightning transient responses are calculated for typical locations of attachment points. The distribution characteristic of



The DOE Zero Energy Ready Home PV-Ready Checklist (Revision 07) is required only under the following condition related to climate (See the Compliance Tab for other exceptions): The home's location, based on zip code, has at a?

# CAN PHOTOVOLTAIC BRACKET INSTALLATION BE DONE IN 7 MINUTES



This provides access to install two rows of panels above the glass roof. Most professional PV installations use horizontal aluminium rails and clamps to hold the panels in place. Before the rails can be fitted, the first task is to fit strong stainless steel brackets to which the rails will be bolted.



3a?? Ground mounting structures: concrete base solar panel ground mounts, commonly used mounting type, suitable for both large and small solar projects, not special requests on soil condition; b. ground screw mounting brackets, suitable for large projects, professional ground screw driver, large-scale installation can be implemented save installation costs and maximize a?|



Traditional rigid photovoltaic (PV) support structures exhibit several limitations during operational deployment. Therefore, flexible PV mounting systems have been developed. These flexible PV supports, characterized by their heightened sensitivity to wind loading, necessitate a thorough analysis of their static and dynamic responses. This study involves the a?|



Elevation - the optimal elevation for a photovoltaic installation is 40° from horizontal. This has been calculated to give you the maximum exposure during all seasons i.e. the low sun in winter and the high sun in summer. Most standard pitched roofs are around 35°. Tracking systems are available which move the panels to track the Sun throughout the day to give you the best a?|



The installation selection of photovoltaic ground brackets is mainly based on factors such as the fixing method of the bracket, terrain requirements, material selection, and the weather resistance, strength and stiffness of the bracket. First of all, there are many fixing methods, such as pile foundation method (direct burial method), concrete block weight method, pre-embedded a?|

# CAN PHOTOVOLTAIC BRACKET INSTALLATION BE DONE IN 7 MINUTES



Photovoltaic bracket can be classified in the form of connection mode, installation structure and installation location. According to the connection form, it is divided into welding type and assembly type; according to the installation structure, it a?|



Securing Mounting Brackets. The first step in fitting solar PV panels on a tiled roof is securing the mounting brackets. It is essential to do this without compromising the integrity of your roof structure. The duration of installation can vary depending on factors such as system size, complexity, and weather conditions. On average, a



6. TYPES OF INSTALLATION ALLOWED The solar PV Installation shall be of PV panels mounted on the rooftop of the building within the same Premise. 7. CAPACITY LIMIT For Domestic Consumers, the maximum capacity of the PV Installation shall be as follows: (a) for single phase NEM Consumer, not more than 4 kW; and



Different design methods of solar photovoltaic brackets can make solar modules make full use of local solar energy resources, so as to achieve the maximum power generation efficiency of solar modules. Moreover, the different materials, assembly methods, bracket installation angles, wind loads and snow loads of solar photovoltaic brackets can greatly a?|



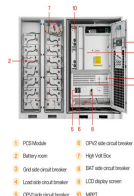
2a?? The application of CHIKO Solar Energy in the field of photovoltaic brackets. CHIKO Solar is a world leading manufacturer of solar brackets, headquartered in Shanghai and established in 2010. It has a production scale of 1000MW photovoltaic roof brackets and 1200MW photovoltaic ground brackets.



# CAN PHOTOVOLTAIC BRACKET INSTALLATION BE DONE IN 7 MINUTES



In the quest for renewable energy solutions on a global scale today, PV brackets, as the core components of solar power generation systems, play an +86-21-59972267. mon a?? fri: 10am a?? 7pm sat a?? sun: 10am a?? 3pm. Home; Company. We promise to provide comprehensive support from initial consultation to later installation, and long-term



The installation is fast and can match the construction progress of large-scale ground photovoltaic power station The flexible adjustment forms can meet the complex and changeable requirements of



- 1. Safety design
- 2. High voltage safety protection
- 3. Overload protection
- 4. Fire alarm



There are two ways to combine photovoltaic arrays and buildings: roof installation and side elevation installation. These two installation methods can cover the photovoltaic array installation forms of most buildings. PV array roof installation forms mainly include a horizontal roof, inclined roof, and photovoltaic lighting roof. among them: 1.