

CAN PHOTOVOLTAIC PANELS BE BLOCKED



Do solar panels have blocking diodes? However, most of the solar panel array already has a built-in bypass and blocking diodes. Nevertheless, you still have to be careful. I hope this article helped you in learning about blocking diodes and how they are necessary for solar panels.



What are blocking and bypass diodes in solar panels? We will discuss both blocking and bypass diodes in solar panels with working and circuit diagrams in details below. Bypass Diode in a solar panel is used to protect partially shaded photovoltaic cells array inside solar panel from the normally operated photovoltaic string in the peak sunshine in the same PV panel.



Why do solar panels not discharge at night? They mostly come with built-in blocking diodes to prevent the current from flowing backward into the solar panels at night. In simple words, your battery won't discharge because of the blocking diode in the charge controller.



What happens if a solar panel is covered by a leaf? If one cell is covered by a leaf, the second string of solar cells will not produce any current. If there were no bypass diodes, the whole solar panel would produce none or very little current. Thanks to the bypass diodes, the solar panels will still produce 2/3 of its rated current.



What happens if a solar panel is shaded? This causes the solar panel to heat up and have some power loss. Those shaded solar cells become consumers of electricity instead of producers. Bypass diodes inside a junction box of a solar panel provide a low resistance path for the current go around a series of solar cells that have been shaded. The diode is wired in parallel with the cells.

CAN PHOTOVOLTAIC PANELS BE BLOCKED



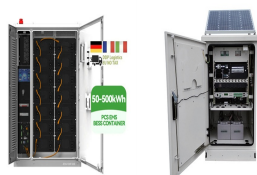
Are solar panels bad for Your Neighbourhood? Visual impact: Neighbours may be concerned that the solar panels will be unsightly and reduce the aesthetic appeal of the neighbourhood. Loss of sunlight: Neighbours may be concerned that the solar panels will block sunlight from reaching their property, potentially affecting their plants or garden.



solar panels can help achieve this. Once you've covered the upfront cost of installing solar panels you can enjoy cheaper bills for years to come.
a?c Reduce your carbon footprint By harnessing low carbon solar electricity, a typical home solar panel system could save around 800kg of carbon a year depending on where you live in the UK.



The rationale behind this seems to be that one of the panels does not drive a current through the other panel in forward direction (hence the name "blocking diode", as opposed to the bypass diodes that are part of modern a?)



Fit: solar panel covers should fit snugly around your solar panel. If it's too loose then it could blow off in strong winds and if it's too tight then it could crack the solar panel. Transparency: solar panel covers should be transparent so that they don't block out the sun. After all, that's what solar panels need to work!



Your solar panel system has to be isolated from your mains electricity, so engineers are able to safely perform maintenance and servicing whenever your system needs it. They must protect against overvoltage and a?)



How solar panels work. Solar Energy Diagram. This solar panel diagram shows how solar energy is converted to create free electricity for your business or home. How solar panels work step by step. The sun gives off light, even on cloudy days. PV cells on the panels turn the light into DC

CAN PHOTOVOLTAIC PANELS BE BLOCKED

electricity.

CAN PHOTOVOLTAIC PANELS BE BLOCKED



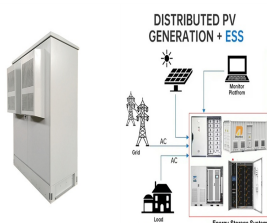
If the solar panels are going to be installed on the exterior walls of a block of flats, or if any of the panels will end up sitting within one metre of the edge of a flat roof. You a?|



Standard window glass, often used in residential and commercial buildings, is not ideal for allowing solar energy to pass through. This is primarily because standard glass is designed to block a significant portion of a?|



Low clouds can block light from the sun, which means less solar energy. However, certain cloudy conditions can actually increase the amount of light reaching solar panels. Weather satellites such as those in the GOES-R Series keep an eye on these clouds, which can help scientists make predictions about the capture of solar energy.



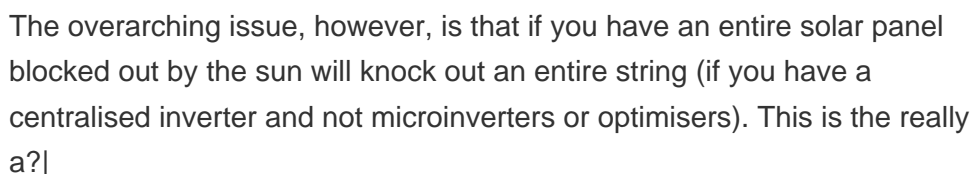
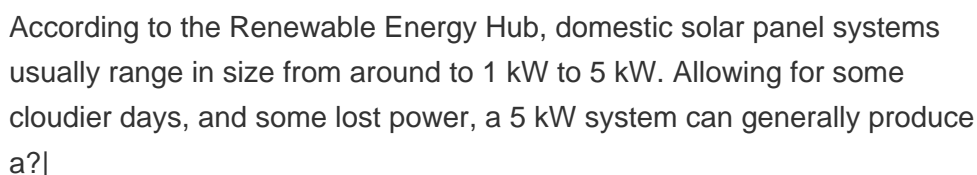
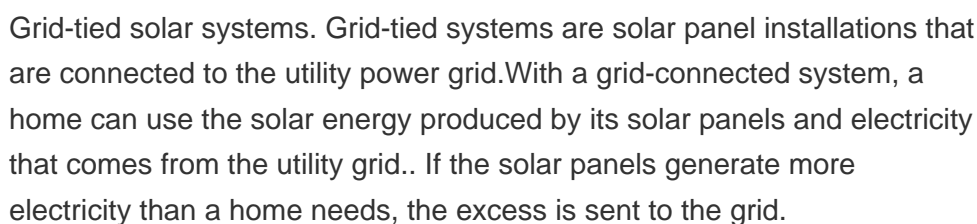
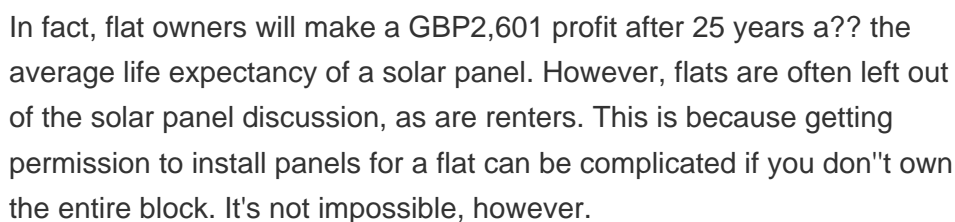
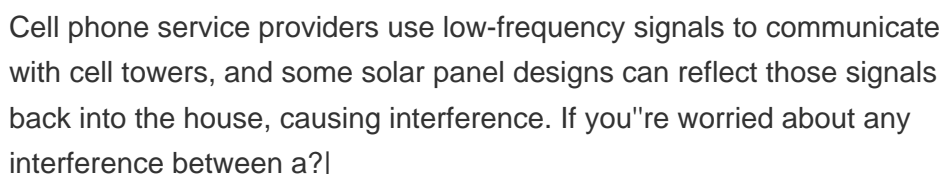
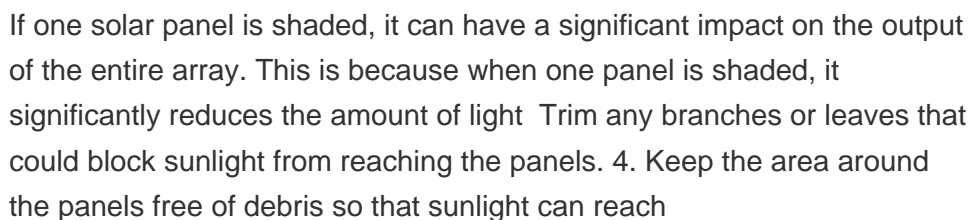
Installers must only fit solar panels if they're sure your roof can hold their weight, and carry on doing so for up to 40 years. Fortunately, most roofs in the UK are built to hold much more than a solar panel system, which usually weigh around 20kg per square metre when everything's included.



The current of the solar panel that is shaded will drop significantly, reducing the total current output of the whole series string. Do solar panels work in the shade? You will get a tiny amount of power from shaded solar panels compared to the full sun. Let's say it's about 10-20% of the rated power.



Building regulations approval is mandatory for solar panel installations in the UK. The approval process ensures compliance with safety, structural, and electrical standards. It verifies that the installation is carried out a?|



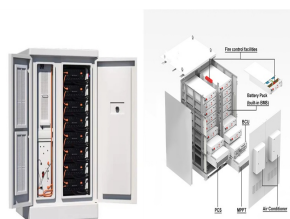
CAN PHOTOVOLTAIC PANELS BE BLOCKED



Diodes in panels with a serviceable junction box can be tested by disconnecting the solar panel from the array and using a multimeter to test the bypass diode directly. A working diode should show low resistance in one direction (forward-biased) and high resistance in the opposite direction (reverse-biased).



If your neighbours are concerned about the loss of sunlight, you can reassure them that modern solar panels are designed to be low profile and are unlikely to block significant amounts of sunlight. Finally, if your neighbours a?|



This is primarily because standard glass is designed to block a significant portion of the sun's energy to reduce heat and glare inside buildings. (BEIS), standard window glass can reduce the solar energy reaching solar panels by as much as 50%. This means that if you were to place solar panels behind standard window glass, their



Can you cut a flexible solar panel? The flexible solar panels are thinner than the standard crystalline or polycrystalline solar panels. This is one of the main reasons people prefer flexible solar panels over the traditional bulky ones. A thin-film solar panel is one micron thick and has a light-absorbing layer.



When Tao published a review paper on solar-panel recycling in June 2020, he calculated that the value of raw materials that could be extracted from a used panel would be around \$10. By June 2021



If your solar panel installation falls within these parameters, your neighbours won't have any grounds to object. However, if your installation doesn't adhere to these guidelines, your neighbours may have valid reasons for objecting. Loss of sunlight: Neighbours may be concerned

CAN PHOTOVOLTAIC PANELS BE BLOCKED

that the solar panels will block sunlight from reaching

CAN PHOTOVOLTAIC PANELS BE BLOCKED



- TELECOM CABINET
- BRAND NEW ORIGINAL
- HIGH EFFICIENCY

Blocking diodes are used to prevent your batteries from discharging backward through your solar panels at night. Again, current flows from high to low voltage. So during a sunny day, the voltage of a solar panel a?|



Legal and Planning Permissions Associated with a Solar Panel System UK. Solar Panel Legal and Planning for England. In England and Wales, the domestic installation of mounted solar panels is likely to be considered "permitted development", meaning there is no need to apply to the council for planning permission. However, some conditions must be met, a?|



So, ensure you install it correctly; otherwise, your solar panel output is going to take a serious nosedive. Look for the bar on the diode, that's the cathode end. It should point towards the positive lead, directing current away from the solar panels. 3. Connect in Series.



- INDUSTRIAL OUTDOOR CABINET
- IP65
- OUTDOOR ENERGY STORAGE CABINET
- OUTDOOR MODUL CABINET

Inaccessibility: Maintenance of an earth-based solar panel is relatively simple, but construction and maintenance on a solar panel in space would typically be done telerobotically. In addition to cost, astronauts working in GEO are exposed to unacceptably high radiation dangers and risk and cost about one thousand times more than the same task done telerobotically.



- INDUSTRIAL OUTDOOR CABINET
- IP65
- OUTDOOR ENERGY STORAGE CABINET
- OUTDOOR MODUL CABINET

By cutting red-tape in the planning system we can make sure homeowners and businesses can install solar panels without being held up by costly delays. Crucially, these permitted development rights

CAN PHOTOVOLTAIC PANELS BE BLOCKED



Bypass Diode in a solar panel is used to protect partially shaded photovoltaic cells array inside solar panel from the normally operated photovoltaic string in the peak sunshine in the same PV panel. In multi panel a?|



Solar Panel Output: The second factor to consider is the solar panel output, which determines how much energy can be generated and stored in the batteries. The size of the solar panel array will depend on the available a?|



You can limit production by using shade to your advantage. Anything blocking the solar panel can reduce collection and production by up to 50%. Clouds, fog, and trees can block the sun's interaction with your panel. But if that's not available, you can makeshift a contraption you can move and adjust over the panel from time to time.



It's time we finally talk about solar panel radiation, and whether or not that should be a concern for you. Over the last 5-10 years, the cost of installing a solar panel system in your home has gone down significantly. This kind of paint block EMF radiation that is coming in a direct line, so it makes a perfect product to block radiation