

# CAN PHOTOVOLTAIC PANELS BE INSTALLED AT SWITCH STATIONS

---



Can a photovoltaic system be connected to a building electrical installation? Indeed, a photovoltaic system can be connected to the building electrical installation at different places: to the main low-voltage (LV) switchboard, to a secondary LV switchboard, or upstream from the main LV switchboard. These options, their advantages and drawbacks are discussed in this blog post. 1.



Do solar panels need Building Regulations approval? Building regulations approval is mandatory for solar panel installations in the UK. The approval process ensures compliance with safety, structural, and electrical standards. It verifies that the installation is carried out by competent installers and that all relevant regulations are adhered to.



Do solar panels need planning permission in the UK? In the UK, the installation of solar panels is subject to both planning permission and building regulations approval. While planning permission focuses on the aesthetics and impact of the installation on the local environment, building regulations primarily deal with the technical aspects of the installation.



Do you need planning permission to install solar panels on your roof? An increasing number of people are investing in solar energy. More and more homes are having solar panels, or solar tiles, installed on their roofs. Of course, with such installations, the topic of planning permission and building regulations often comes to the surface.



Can I install solar panels if I don't meet building regulations? Your local authority can also apply for a Confiscation Order to take away any money you've earned with your system as so there's absolutely no benefit to installing solar panels that don't meet building regulations. It's crucial that your solar installation follows all building regulations.

# CAN PHOTOVOLTAIC PANELS BE INSTALLED AT SWITCH STATIONS



How to choose a solar panel installer? Engaging a Qualified Installer: It is crucial to engage a reputable and qualified installer who is knowledgeable about building regulations and experienced in solar panel installations. They will ensure that the installation meets all the necessary requirements and follows best practices.



OMV Petrom, the largest energy company in Southeastern Europe, installed photovoltaic panels in 33 OMV branded filling stations and in 7 Petrom-branded filling stations, so that they can be supplied with green energy and reduce the consumption of conventional energy.



A photovoltaic (PV) system is any electricity system where solar PV panels are installed to generate electricity for human consumption. This can encompass anything from a commercial agrivoltaic farm to a single solar panel providing basic smartphone charging in an off-grid mountain shelter.



Connecting in series means joining the positive terminal of a solar panel to the negative terminal of the next solar panel until eventually you are left with one free positive and one free negative terminal of the array, which are to be connected to the input either of the inverter (in case of a grid-tied system without a battery backup) or the



Suppose, in our case the load is 3000 Wh/per day. To know the needed total W Peak of a solar panel capacity, we use PFG factor i.e. Total W Peak of PV panel capacity =  $3000 / 3.2$  (PFG) = 931 W Peak. Now, the required number of PV panels are =  $931 / 160W$  = 5.8. This way, we need 6 numbers of solar panels each rated for 160W.

# CAN PHOTOVOLTAIC PANELS BE INSTALLED AT SWITCH STATIONS



sensitive applications, from space satellites to microwave stations in the mountains and other remote harsh environments. Solar panels typically carry warranties of 20 years or more. c. Scalable and modular- Solar power products can be deployed in many sizes and configurations and can be installed on a building roof or acres of field; providing



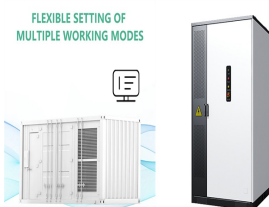
Your installer must gain building regulations approval from your local authority for their solar panel system plan before they can proceed. They will have to prove your roof can comfortably support the weight of your chosen a?]



In addition to the risks associated with dealing with live electricity (you can't turn solar PV panels off!). The installer is also faced with the dangers of handling potentially large and heavy equipment at height as well as ensuring that the installation of a solar PV system does not have a negative impact on the strength and integrity of the



Solar panels can be installed both on the roofs of gas stations, and next to them in the form of solar canopies, including those that function as covered parking lots or charging stations for electric vehicles. Among Ukrainian gas station chains, solar PV panels are actively used by WOG, OKKO, KLO, and other operators.



These are not just fancy decorations; they are like power stations for the sun! Solar panels capture sunlight and turn it into electricity. This is a big deal because it means we can get energy without burning coal or gas, a?]

# CAN PHOTOVOLTAIC PANELS BE INSTALLED AT SWITCH STATIONS



Load-side interconnections are usually at the main electrical panel or switchgear and are oftentimes less disruptive to install and merely require adding a breaker at the end of the a?]



Plugging in for savings: The benefits of solar EV charging. Solar charging has many benefits for EV owners, such as: Cost savings: By charging your EV with solar power, you can avoid paying for expensive grid electricity and reduce energy bills pending on your location, tariff, and usage, you can save up to 80% on your charging costs compared to grid charging.



Firstly, as an add on smart device, an immersion diverter doesn't have to be installed at the same time as your Solar Panel System. Making it a great additional investment at any time. An Immersion diverter allows you to a?]



What Is A Solar Panel Shut Off Switch? A solar panel shut off switch is a switch that is used to disconnect the solar panel from the electrical grid. Do I Need To Turn Off Solar Panels To Clean? You MUST turn off solar panels before cleaning them. This is one of the most important safety precautions to take when cleaning solar panels.



This device can be installed near PV strings. In the case of a fire, when the firefighter switches off the AC circuit, Santon switch directly disconnects the DC current in close proximity to the solar modules which makes the place much safer for firefighters. The DFS will behave the same way if the temperature rises above 100E?C.

# CAN PHOTOVOLTAIC PANELS BE INSTALLED AT SWITCH STATIONS



Whether you are a homeowner or a business, electricity costs can make up a large chunk of your monthly expenses. Solar allows you to reduce your electricity bills by generating a portion of your own electricity. Most solar panel manufacturers feature a 25-year output warranty, but panels can continue to generate electricity for over 30 years.



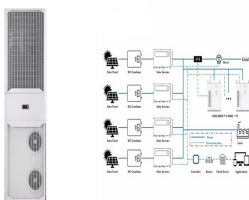
According to the International Energy Agency, there are some circumstances where solar photovoltaic (PV) is now the cheapest electricity source in history. 4 This is because the price of solar has fallen sharply a?]



The generator's automatic transfer switch, or ATS, is able to detect a power outage and then immediately switches your home's power source from the grid to the generator. Instead of buying a generator, you can install a solar battery to provide backup power to your home in the event of an outage. Whether a generator or a solar battery



The power output of a solar panel install is influenced by factors such as system size, geographic location, panel efficiency, installation angle and orientation, shading, and battery storage capacity. Each of these factors can impact the overall energy production of your system.



Solar Panel Installation. The installation phase is where the rubber meets the road a?? or to be more accurate a?? where the solar panel meets the rooftop. Solar panels should be installed at an angle that catches the a?]

# CAN PHOTOVOLTAIC PANELS BE INSTALLED AT SWITCH STATIONS



At the very beginning, it is worth noting that the law does not prohibit the installation of photovoltaic panels on your own, but in accordance with the provisions and regulations of the OSD, in order for the installation to be connected, it is necessary to have an electrical qualification, construction license or a UDT certificate.



Solar Photovoltaic (PV) panels are generally installed on a roof and use the energy from the sun to power any electrical appliance in your home, including electric radiators. This electricity is free to produce and is great for the environment as no carbon is given off during the production process, unlike electricity produced by a typical electricity provider.



The short answer is yes, the average sized solar panel system can produce enough electricity to not only power an EV, but also to power the average home as well. Of course, this is all dependent on the capacity of your solar panels, how much sunlight they are exposed to, how much electricity you use at home, the amount of charge your EV needs, and how many miles a?]



We will use a solar panel wattage of 410W, such as the Q.PEAK Duo Black from Qcells, to calculate the number of panels needed for the Hyundai Ioniq 6. Convert the 410W to kilowatts by dividing by



A solar battery and a relay (switch) can be useful if you often face power cuts in your local area, so you can have power even when others don't. Our brand new guide, A Consumer's Guide to Solar Panel Installation, provides you with all the information you need to make informed decisions about going solar.



# CAN PHOTOVOLTAIC PANELS BE INSTALLED AT SWITCH STATIONS



The purpose of this article is to give you a basic understanding of the concepts and rules for connecting a solar panel system to the utility grid and the household electrical box or meter. The utility connection for a PV solar system is governed by a?



Photovoltaic (PV) panels (also called solar electric panels) convert energy from the sun into electricity. PV panels (or modules as they are sometimes called) are composed of a number of PV cells (or solar cells) a?



In-line: DC isolation switches can be installed in-line with the DC cables, either between the solar panels and the charge controller or between the charge controller and the battery bank. This method is suitable for systems a?

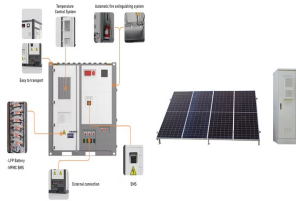


Solar panels do not usually come with portable power stations. Solar panels are typically sold separately so that the customer can pick the size and type of panel. However, you can get portable power stations with solar panels as package deals, such as the EcoFlow RIVER 2 with a 100W Portable Solar Panel. Can You Connect More Than One Solar



I. Introduction . In a world where sustainability and energy efficiency are becoming increasingly important, finding innovative ways to harness the power of the sun is at the forefront of modern living. One such innovation is the use of balcony solar panels, a concept that brings the benefits of solar energy closer to home.. Imagine having your source of clean and a?

# CAN PHOTOVOLTAIC PANELS BE INSTALLED AT SWITCH STATIONS



What are solar farms? First off, an introduction to what solar farms actually are. In short, a solar farm is functionally no different from the same solar panels you'll find on rooftops around the world, only at a much greater scale. When you collect large amounts of solar panels and place them in optimal locations, the potential for generating electricity increases immensely.



In recent years, solar panels have become more popular than ever before, with the UK seeing more than 17,000 new solar installations each month so far in 2023. This isn't surprising, given that solar panels can dramatically cut your a?]