

# CAN THE CERAMIC FACTORY ROOF BE USED FOR PHOTOVOLTAIC PANELS



Can solar panels be installed on a factory roof? The roofs of factories are often the ideal place to install solar panels. As factories are energy-intensive buildings, installing a solar PV system on the roof of a factory ensures free power can be generated to run everything underneath it.



Can solar PV be installed on warehouse roofs? Installing solar PV on warehouse roofs means generating free electricity for the warehouse and adjacent buildings, such as offices. Warehouse and logistics firms can significantly reduce their energy bills with a solar PV system.



What are photovoltaic ceramics? Photovoltaic ceramics offer a new, efficient way to harness solar energy. These materials combine the durability of ceramics with the energy-converting properties of photovoltaics. Potential applications include building-integrated photovoltaics, and enhancing the sustainability of modern architecture.



How do photovoltaic ceramics work? Photovoltaic ceramics work by converting sunlight into electricity, similar to traditional solar panels. These ceramics are made by integrating photovoltaic materials into ceramic substrates, which are known for their robustness and heat resistance.



Can PV slate be used on a roof? As PV Slate is an electrical product, there needs to be a border of two natural slates around the edges of the roof and any roof windows. We can make passive "infill" PV Slates to complete the surround for a perfect finish and a roof that no one would believe was solar.

# CAN THE CERAMIC FACTORY ROOF BE USED FOR PHOTOVOLTAIC PANELS



What are the benefits of solar PV on warehouse roofs? As energy efficiency rises to the top of the agenda for warehouse and logistics firms, more and more are seeing the benefits of solar PV. Installing solar PV on warehouse roofs means generating free electricity for the warehouse and adjacent buildings, such as offices.



A pressure-equalized Rear Ventilated Rainscreen system for exterior or interior wall panel used in new construction or renovation, commercial and other applications. Typical uses include: exterior wall panels. Non-load bearing use only.



Photovoltaic roof tiles are aesthetic ceramic roof tiles with integrated photovoltaic solar panels, which could present economic, energy-related or environmental characteristics that hinder their implementation.



Solar tiles are also far more durable than the traditional solar panels that you mount on your roof. Solar panels can last up to 40 years, but as they are rigid modules mounted on metal, they can be damaged by extreme weather conditions. Can I build my own Solar Panel System UK? - DIY Solar; Getting Solar Panel Quotes in the UK 2024; How



This will be determined by the factory's available roof space, electricity usage, and financial goals. As systems scale to larger sizes with more panels, the overall cost of the factory's system will increase primarily due to the larger number of panels, mounting infrastructure, and cabling. b) The types of solar panel systems used

# CAN THE CERAMIC FACTORY ROOF BE USED FOR PHOTOVOLTAIC PANELS



- OUTDOOR OUTDOOR CABINET
- PHASE
- OUTDOOR ENERGY STORAGE CABINET
- OUTDOOR BATTERY CABINET

Solar panels installed over traditional roofs can suffer from weather-related problems and compromise the roof construction. The EU-funded TilePlus project designed new roof tiles with embedded tough photovoltaic cells. This would ???



Rated Capacity  
200Ah  
Rated Energy  
50kWh  
IP Grade  
IP54

That goal was realized by replacing glass with a thin, clear polymer film of ethylene tetrafluoroethylene (ETFE), trademarked Tefzel, from DuPont Performance Materials (Wilmington, DE, US), resulting in Armageddon's version 1.0 panel design, SolarClover, the industry's first film-covered solar panel to meet the solar industry UL1703 standard (Standard ???



TAX FREE  
ENERGY STORAGE SYSTEM  
Product Model  
KES-250-200Ah-50kWh-IP54  
KES-250-200Ah-50kWh-IP54  
Dimensions  
1800\*1200\*1200mm  
1800\*1200\*1200mm  
Rated Battery Capacity  
200Ah/50kWh  
Battery Cooling Method  
Air-Cooled/liquid-Cooled

This is because a solar panel system usually weighs about 20kg per square metre, which the great majority of roofs can hold. However, flat roofs may not always be strong enough for solar panels. Drilling into a flat roof can ???



Cheap Factory Price Ground Aluminium Concrete Solar Panel Balcony Solar Bracket. End Clamps. Ceramic tile roof solar photovoltaic mounting structures installation. Clay tile roofs dominate the landscape of the American Southwest. They look great, they are part of Spanish culture and can last for a century.



TAX FREE  
ENERGY STORAGE SYSTEM  
Product Model  
KES-250-200Ah-50kWh-IP54  
KES-250-200Ah-50kWh-IP54  
Dimensions  
1800\*1200\*1200mm  
1800\*1200\*1200mm  
Rated Battery Capacity  
200Ah/50kWh  
Battery Cooling Method  
Air-Cooled/liquid-Cooled

failure and subsequent fire. The panels themselves create heat that can ignite debris on the roof surface below the panels. Numerous fires started by the PV electrical system have involved combustibles within the roofing assembly and were adversely affected by re-radiation of heat from the rigid PV panels. Some PV racking systems use plastic

# CAN THE CERAMIC FACTORY ROOF BE USED FOR PHOTOVOLTAIC PANELS



Top EVs with Solar Panel on Electric Car Roof. A car running completely on solar energy is still a pipeline dream, but rooftop panels are now being featured on cars like Hyundai's Sonata and Mercedes's Vision EQXX. These vehicles use solar panel on electric car roof to harness the power of the sun to extend their range and reduce reliance



??? Prolonged Installation Periods. Only after the complete roof is replaced can solar roof tiles be installed. This results in substantially longer installation timeframes than with a typical Solar Panel installation. ??? Low Productivity. Solar roof tiles are typically 8???15% less efficient at capturing solar energy than conventional solar



The photovoltaic ceramic tile roof per square meter has a power generation power of about 70-100w, and the solar light can be used to generate 70-150kwh AC power every year. It has the dual effects of saving and ???

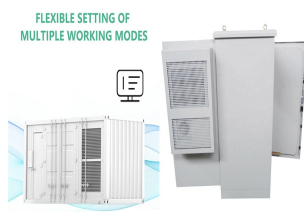


A spokesperson for Nulok told us a 300m<sup>2</sup> ceramic tiled roof with 4kW worth of Nulok solar tiles, fully installed with inverter would cost approximately \$72,000, US car and solar panel manufacturer Tesla announced it was taking deposits of \$1310 in Australia for its range of solar roof tiles with smooth or textured glass versions, and slate



This photovoltaic ceramic represents an innovation aimed at self-consumption, similar to Tesla solar roofs and mini wind turbines. This invention marks a step forward toward more flexible solar panels adapted to household ???

# CAN THE CERAMIC FACTORY ROOF BE USED FOR PHOTOVOLTAIC PANELS



design of the solar panel frame and roof. (a) (b) (c) Fig 1. (a). Solar Panel Mount Design, (b). Tile Mount Design, (c) Dimensions of Solar Panel and Roof Frame In designing the load panel as the output of the solar panel, the acrylic material is used with a size of 75 x 60 cm. The following figure 2 shows the research



When installing PV systems on pitched roofs, such as those made of color steel tiles or ceramic tiles, the installation method typically follows the natural slope of the roof. In these cases, the spacing between rows of panels can be determined by considering a maintenance corridor that facilitates easy access for maintenance and inspection.



The main purpose of the solar photovoltaic power plant (SPVPP), with installed power of 500 kW on the roof of the factory GRUNER Serbian Ltd in Vlasotince, is to electrical supply of consumers in



Can PV slates be used to cover the roof completely? As PV Slate is an electrical product, there needs to be a border of two natural slates around the edges of the roof and any roof windows. We can make passive "infill" PV Slates to ???

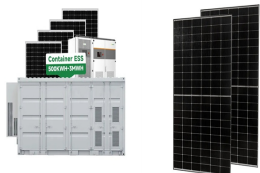


Solar roof tiles are essentially solar panels disguised as roof tiles. They use the same solar photovoltaic technology as conventional solar panels, but they are built into the fabric of the roof like traditional tiles. Yes ???  
???

# CAN THE CERAMIC FACTORY ROOF BE USED FOR PHOTOVOLTAIC PANELS



Modern tiles are sleek and subtle, but more expensive than solar panels; Solar roof tiles have an efficiency rating of between 10% and 23% ; Solar panel efficiency is usually between 18% and 25%; Ergosun solar roof tiles can be hard to ???



If you're a UK small business with a warehouse, then that warehouse roof could be an ideal space for a solar photovoltaic installation. With just over 1,000,000 deployments nationwide, solar photovoltaic panels (solar ???)



Discussion of solar photovoltaic systems, modules, the solar energy business, solar power production, utility-scale, commercial rooftop, residential, off-grid systems and more. Solar photovoltaic technology is one of the great developments of the modern age. Improvements to design and cost reductions continue to take place.



Why harness solar energy for your factory or industrial building roof? The roofs of factories are often the ideal place to install solar panels. As factories are energy-intensive buildings, installing a solar PV system on the roof of a factory ???



NEW! 410Wp Solar Panel. Larger than Marley's 335Wp panel, the new 410 Solar Photovoltaic Panel delivers a peak power of 410Wp to increase total power from a roof area, whilst allowing for the installation of fewer solar panels to achieve the desired power output.



# CAN THE CERAMIC FACTORY ROOF BE USED FOR PHOTOVOLTAIC PANELS



Whether you opt for ground-mounted or roof-mounted panels, we can design and install a PV solar system that will serve you reliably for decades to come. To enquire about a commercial solar panel system for your factory, contact our friendly and professional team today on ???



Undoubtedly, price is the major appeal of used panels. On average, you can find used panels for between \$0.05 and \$0.60 per watt, according to experts on the secondary solar market comparison, according to recent data from the EnergySage marketplace, the cost-per-watt for new panels averages around \$2.75/W before incentives.. To compare the price of new ???



Photovoltaic roof tiles are aesthetic ceramic roof tiles with integrated photovoltaic solar panels, which could present economic, energy???related or environmental characteristics that hinder



The hydrogen journey starts far, far away, from the stars and reaches the Earth through solar energy stored in photovoltaic panels installed on the factory roof. At the same time, rainwater is collected and subjected to electrolysis ??? in an ???



The temperature on top of the solar panel (?C) and the temperature between the solar panel and the roof (?C) are measured using the TC-O8 Thermocouple Data Logger; 6. The solar radiation (W/m2) on a solar panel is measured using a Solar Power Meter ???