

# CAN THE SPARE TIRE STORE ELECTRICITY



Where are spare tires stored? Like mid-engine cars, the spare tire is stored in the front boot in the rear-engine vehicles. Some vehicles, such as the first-generation Fiat Panda and the Subaru Leone, keep their spare tires in the engine bay. Perhaps you just invested in a spare tire, and you are wondering how you are going to ensure that your tire lasts longer.



Why do you need a spare tire? Spare tires are valuable during an emergency. They can be used to get to a car repair shop or get home safely. Spare tires are a practical alternative to sealants or inflator kits, which need extra expertise to handle and operate and can cause damage to the tires if not used properly.



Can a spare tire be used on another vehicle? Never attempt to change or use the spare tire on another vehicle unless the wheel is of the exact model and make. Before you drive on your spare tire, there are essential things to know about spare tires: Ensure the spare tire has been appropriately inflated before use.



Do you need a spare tire when traveling? Carrying a spare tire is no doubt essential when traveling, especially on long-distance trips. Although some modern cars do not come with spare tires, a spare tire is a handy and vital component of a vehicle when it comes to inconveniences caused by flat tires.



Where should a spare tire be stored? The spare tire needs to be kept safely in a designated location, such as the trunk of your car or a special storage space, and it needs to be checked frequently for any symptoms of wear and tear, like bulges, cracks, or car punctures. How to properly store a spare tire? Why is a spare tire necessary? Why plastic bag is used to store spare tires?

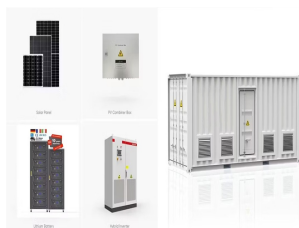
# CAN THE SPARE TIRE STORE ELECTRICITY



What is a spare tire? A spare tire, also known as a "donut" or an emergency tire, is an extra tire kept in a vehicle's trunk, undercarriage, or mounted on the rear. It is meant to be used in case of a tire blowout or flat, but many car owners don't give much thought to its upkeep.



If you can "spare" a moment, read on for everything you need to know about spare tires, including the difference between a full-size spare and a compact spare, plus what your other options are, like flat tire repair kits or a [



Spare tires come in two main types: full-size spares and compact spares (commonly referred to as "donut" spares). A full-size spare tire is designed to function just like the tires already on your vehicle and can be used as a [



This bag can hold the entire spare tire kit while occupying minimal trunk or cargo space. Compact and Low-Profile Design: When stored flat in its carrying bag, the EZ Spare Wheel measures just 4.9 to 6 inches tall, depending on your desired [



Before ordering a space saver spare wheel, check that your car can carry it safely. If you are unsure, check the vehicle's owner's manual or contact the manufacturer. Most spare wheel storage areas are found under the boot [

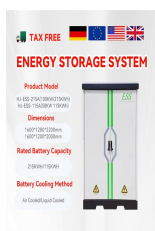


It is quite harder to use than other spare tires; you have to inflate every time you use this spare tire and then deflate to store it back in your trunk. However, they are more reliable than donut-shaped spare tires and improve fuel efficiency [

# CAN THE SPARE TIRE STORE ELECTRICITY



If you store your tyres outside (recommended for a short period only), lift the tyres off the ground and use an impermeable covering with holes to prevent the accumulation of moisture. Make sure that the surfaces on which the tyres are a?|



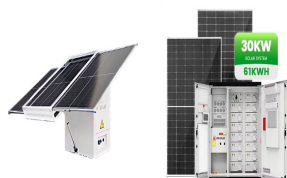
Proper storage can prevent wear and distortion of your tires, as well as keep you and your property safe from tire fires and pest infestations. Follow these guidelines to safely store your spare tires between uses or before recycling.



Tire Size a?? 3 Main Numbers Example Differences In Bolt Patterns. Another reason why spare tires aren't universal is the bolt pattern. The bolt pattern is the arrangement of lug nuts or bolts that hold the tire onto your vehicle.



If the tire has been properly cared for, it is statistically unlikely to puncture again before you get a replacement tire. This means you can use the same spare tire multiple times, a?|



Check that the tyre dimension is approved for use on the car. Spare wheel. The spare wheel, the Temporary Spare type, can be used to temporarily replace a punctured normal wheel. Tool kit. a?|



Unused spare tires can last over ten years, whether your spare tire is a donut spare tire or a full-size spare tire. The rubber tends to break down over time due to chemical reactions. The spare tire may look okay, but the tire's a?|

# CAN THE SPARE TIRE STORE ELECTRICITY



If you are looking for popular electric cars with spare wheels, we wrote this article to answer your question. Join us in exploring 6 popular electric cars with spare wheels and their prices. The spare tire is a full-sized tire a?|



In a recent Auto Buyers Guide channel episode, the host does a demonstration of what he sees as a good solution to the no-spare-tire-EV sale by showcasing the collapsible tire used by Audi



Having a spare tire in your car not only enhances your safety but also saves you the stress that comes with getting a flat tire. In this guide, we'll learn all about flat tires, from why it is essential to have one to the precautions a?|



While you can get a normal tire for your electric car, note that this may affect your driving experience negatively. Plugging your electric car into a power outlet to charge stores energy in a rechargeable large traction battery a?|



To make matters worse, many of the most popular electric vehicles available today don't even have a spot to store a tire if you'd like to get a spare later. This includes every Tesla model, the Mustang Mach-E, Hyundai's a?|



As a prospective buyer or a proud owner, understanding the intricacies of the spare tire on Mini Cooper can make a difference in ensuring a seamless drive and preparing for unanticipated tire challenges. Yes, some a?|

# CAN THE SPARE TIRE STORE ELECTRICITY

---



Spare tires tend to be out of sight, out of mind, but they can still lose pressure over time. We make it a point to check the tire pressure regularly, adjusting it to the manufacturer's recommended level. A properly inflated a?|