

# CENTRAL AFRICAN REPUBLIC 5KW POWER STATION



The EcoFlow DELTA 2 Max power station features fast charging, a high 2kWh capacity, and 2400W AC output to deliver exceptional portable power for camping trips, emergencies, and home use. 2048Wh Capacity (167Ah@12V) | 2400W Output



CENTRAL AFRICAN REPUBLIC LOCATION, SIZE, AND EXTENT [1] TOPOGRAPHY [2] CLIMATE [3] and the experimental station of Mabok The Economist Intelligence Unit reported that in 2005 the purchasing power parity of the Central African Republic's exports was \$188.6 million, while imports totaled \$143.5 million, resulting in a trade surplus of \$45



All 7 power plants in Central African Republic; Name English Name Operator Output Source Method Wikidata; Centrale Solaire de Danzi: 25.00 MW: solar: photovoltaic: Centrale du barrage de la M'Bali: Enerca: 10.00 MW: hydro: Centrale de Boali 2: Enerca: 9.90 MW: hydro: run-of-the-river: Q56373704: Centrale de Boali 1: Boali I Hydroelectric



Poor access to electricity remains a major hindrance to the economic development in Central Africa sub-region. To address this issue the Central African Power Pool (CAPP) has been established with the vision to create and manage a regional cross-borders exchange of electricity based on the development of the sub-region's enormous hydropower ???



The Central African Republic Government Endorses the National Water and Sanitation Policy. [7] Climate Change Knowledge portal (2022). Central African Republic. [8] African Development Bank Group (2022). Central African Republic - First Sector Sub-Programme for Drinking Water Supply and Sanitation in Bangui and Four Prefectures.

# CENTRAL AFRICAN REPUBLIC 5KW POWER STATION



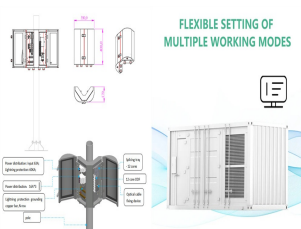
Online radio stations in Central African Republic on MyTUNEiN internet radio directory sorted by most listened. Search. Radio Ndeke Luka. Radio Ndeke Luka . Details . Hits: 2167 . WATCH LIVE TV ???? . Trending Stations ???>> ????



The Central African Republic has great hydroelectric power, estimated at 2,000 MW (MMEH, 2013). Existing power stations include the Boali I (8.75 MW), Boali II (10 MW) and Boali III (10 MW). Other large hydropower installations are the 300 ???



English (US) Portuguese (BR) Español (LATAM) Portable Power Station. EMEA. English (Worldwide) Français Deutsch Nederlands Español (ES) Polski (PL) Svenska. - 5kW and 11.4kW available. Backup Capability - Partial home load backup. Easy Operation - Built-in split-phase transformer for 120V/240V output.



The following page lists all power stations in Central African Republic. Hydroelectric. Hydroelectric power station Community Coordinates Type Capacity Year completed or completion expected River Boali I Hydropower Station: Boali Run of river: 9 MW 1955 [1] M"bali River



Here's all you need to know about Central African Republic plug, power outlets, travel adapter needed for sockets, electricity voltage, and frequency. Power Plug & Socket. Menu. The country owns several hydroelectric power stations, such as the 300 MW Palambo project and the Boali I (8.75 MW), Boali II (10 MW), and Boali III (10 MW) stations.

# CENTRAL AFRICAN REPUBLIC 5KW POWER STATION



Demographic profile. The Central African Republic's (CAR) humanitarian crisis has worsened since the coup of March 2013. CAR's high mortality rate and low life expectancy are attributed to elevated rates of preventable and treatable diseases (including malaria and malnutrition), an inadequate health care system, precarious food security, and armed conflict.



Boali Hydroelectric Power Station is a 38.75 megawatts (51,960 hp) hydroelectric power complex near Boali in the Central African Republic.. The power complex comprises three units (a) Boali I (1 x 8.75MW) (b) Boali II (1 x 20MW) and (c) Boali III (1 x 10MW). [1] As of December 2020, the power station was undergoing rehabilitation and renovation, to raise its capacity from 38.75 ???



This power station is supplied totally equipped with several high-efficiency PV inverters, the LV/MV transformer, MV switchgear and LV switchgear. It can be equipped with up to two dual inverters, in both 1,000Vdc and 1,500Vdc topologies, so it covers a very wide output power range. Maximum protection

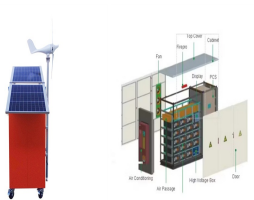


RIVER 2 Max Portable Power Station (Refurbished) 512Wh Capacity (40Ah) 500W Output Save \$300 RIVER 2 Pro Portable Power Station(Refurbished) 768Wh Capacity (64Ah@12V) 800W Output Central African Republic (AUD \$) Chad (AUD \$) Chile (AUD \$) China (AUD \$)



In this article, we will explore the different aspects of List of power stations in the Central African Republic and its influence on our society, and how it is shaping the world we live in. The ???

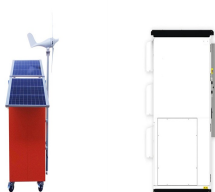
# CENTRAL AFRICAN REPUBLIC 5KW POWER STATION



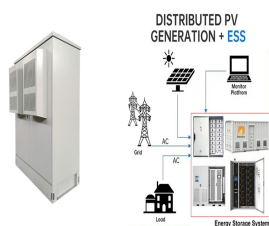
Livolttek Three Phase Solar Inverter from 5kW to 30kW is the string inverter for converting DC to AC power, and is ideal for residential application. DC Charging Station; Commercial & Industrial ESS. ESS; Monitoring & Accessories. Accessories; Monitoring System; PV Input Power: 10000Wp: Max. PV Input Voltage: 1000V: MPPT Voltage Range



The South African Department of Energy allocated 150 MW of concentrated solar power (CSP) capacity in the Renewable Energy Independent Power Producer Procurement Programme ??? bid window 1. [ 56 ] [ 57 ] [ 58 ] In the Renewable Energy IPP Procurement Programme: window 2, a capacity of 50 MW was allocated [ 59 ] [ 60 ] In the Renewable Energy IPP Procurement ???



The table below gives a detailed overview of the fossil-fuel based power plants operating in Ireland in 2017. The data is publicly available and updated annually by the Irish Transmission System Operator (TSO), EirGrid, in its Generation Adequacy Report. [1] In total there was 6609 MW of power plants available in 2017.



Prior to the establishment of Eskom the provision of electricity was dominated by municipalities and private companies. The city of Kimberley was the first user of public electricity in South Africa when it installed electric streetlights run off a coal fired power plant in 1882 to reduce crime at night. [14]: 5 The first central power station and distribution system in South Africa consisting



The four projects, with a combined installed capacity of around 2 MW, are designed to provide affordable, sustainable and stable power to rural communities as part of the "Promotion of small hydropower plants to power mini-grids to ensure better access to modern energy services in the Central African Republic" programme, according to the tender notice ???

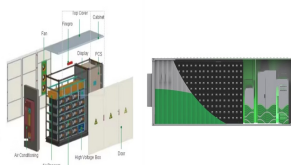
# CENTRAL AFRICAN REPUBLIC 5KW POWER STATION



? Integrate Max.5.12kWh battery, long time power supply. User-Friendly ? Multi-purpose AC outlet, easy to use. ? Multiple work modes, meet lots of scenarios. Applications ? Self-Spontaneous use (Solar first mode) ? Power Consumption and Backup (emergency power backup mode) ? generation power and grid as complementary for energy storage system



The Central African Republic (CAR) has a new photovoltaic solar power plant. The facility, inaugurated by President Faustin Archange Touadera on 17 November 2023, covers a 70-hectare site in the village of Danzi, 20 km north of Bangui, the capital of CAR. The construction of the Danzi photovoltaic power station reflects the Central African



The currency in Central African Republic is XAF, commonly known as Central African CFA Franc and its symbol is "CFA". The exchange rate is the following: 1.00 USD = 622.94 XAF. While staff salaries are usually paid in USD, consultants in Central African Republic are normally paid in Central African CFA Franc.



Engineers work at Sakai photovoltaic power plant in Bimbo, near Bangui, in Central African Republic, June 2, 2022. (Xinhua/Luo Yu) At the 2018 Beijing Summit of the Forum on China-Africa Cooperation, the heads of state of China ???



5KW Solar Charging Stations And Impact On Power System South Africa. Solar panel rated power:5.6KW Suitable for daily power consumption: >33.6KWH. Allowable max loads power:5KW/7KVA . 16pcs 350W monocrystalline solar panel. A Grade SUNTECH cells of high efficiency 18% . Vmp:38.39V Voc:47.13V Imp:9.2A. Size : 1956\*992\*40mm . Operating

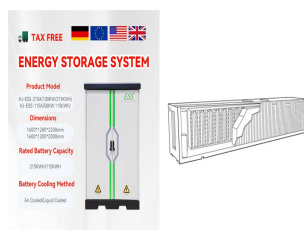
# CENTRAL AFRICAN REPUBLIC 5KW POWER STATION



The BS20 charging station typically requires a standard AC power supply, with specific input power requirements detailed in the product documentation. This ensures compatibility with various electrical systems and configurations, making it easy to ???



the Central African Republic, particularly under the PURCE programme with the World Bank, AFD and China, provide considerable support to the Central African Government to improve the power sub-sector. The PURCE programme will help to increase CAR's installed



MARS SOLAR have 10+years solar power system manufacturers experience for 5 Kilowatt Solar Power Station 220V. More than 3000 successfully cases have installed in 130+countries. Allowable max loads power: 5KW/7KVA . 16pcs 350W monocrystalline solar panel. A Grade SUNTECH cells of high efficiency 18% . Vmp:38.39V Voc:47.13V Imp:9.2A. Size



The Central African Republic (CAR), [a] formerly known as Ubangi-Shari, [b] is a landlocked country in Central Africa is bordered by Chad to the north, Sudan to the northeast, South Sudan to the east, the Democratic Republic of the Congo ???