

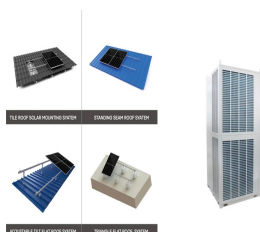
CHARGING DEPTH OF ENERGY STORAGE POWER STATION



Patel 4 has stated that the intermittent nature of the PV output power makes it weather-dependent. In a fast-charging station powered by renewable energy, the battery storage is therefore paired



Compared with other large-scale ESSs such as pumped storage and compressed air storage, the battery energy storage system (BESS) has the most promising application in the power system owing to its high energy efficiency and simple requirements for geographical conditions [5]. Thus, properly locating and sizing the BESS is the key problem for



Currently, some experts and scholars have begun to study the siting issues of photovoltaic charging stations (PVCSSs) or PV-ES-I CSs in built environments, as shown in Table 1. For instance, Ahmed et al. (2022) proposed a planning model to determine the optimal size and location of PVCSSs. This model comprehensively considers renewable energy, full power ???



According to statistics, by the end of 2021, the cumulative installed capacity of new energy storage in China exceeded 4 million kW. By 2025, the total installed capacity of new energy storage will reach 39.7 GW [1]. At present, multiple large-scale electrochemical energy storage power station demonstration projects have been completed and put into operation, ???



Due to urbanization and the rapid growth of population, carbon emission is increasing, which leads to climate change and global warming. With an increased level of fossil fuel burning and scarcity of fossil fuel, the power industry is moving to alternative energy resources such as photovoltaic power (PV), wind power (WP), and battery energy-storage ???

CHARGING DEPTH OF ENERGY STORAGE POWER STATION



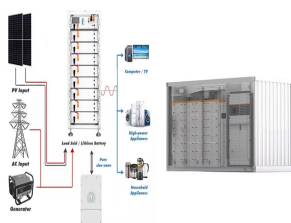
In this context, the combined operation system of wind farm and energy storage has emerged as a hot research object in the new energy field [6]. Many scholars have investigated the control strategy of energy storage aimed at smoothing wind power output [7], put forward control strategies to effectively reduce wind power fluctuation [8], and use wavelet packet ???



In-depth study of the application of solid-state transformer in design of high-power electric vehicle charging stations. One solution for designing a high-power charging station is the SST-based charging stations, which can be connected to the distribution network. superconducting magnetic energy storage (SMES), wind turbine and the



where $r_{B,j,t}$ is the subsidy electricity prices in t time period on the j -th day of the year, $P_{j,t}$ is the remaining power of the system, $P_{W,j,t}$, $P_{V,j,t}$, $P_{G,j,t}$ and $P_{L,j,t}$ are the wind power output, photovoltaic output, generator output, and load demand, respectively.. 2.1.3 Delayed expansion and renovation revenue model. The use of energy storage charging and ???



However, the cost is still the main bottleneck to constrain the development of the energy storage technology. The purchase price of energy storage devices is so expensive that the cost of PV charging stations installing the energy storage devices is too high, and the use of retired electric vehicle batteries can reduce the cost of the PV combined energy storage ???



where $(Q_{\{r\}})$ represents the current electricity quantity of the energy storage power station, $(Q_{\{n\}})$ indicates the energy storage power station's rated capacity. (3) Actual charging and discharging power of the power station. Refers to the power plant's highest output that may last more than 15 min. Including adjustable active power and reactive power.

CHARGING DEPTH OF ENERGY STORAGE POWER STATION



To determine the optimal size of an energy storage system (ESS) in a fast electric vehicle (EV) charging station, minimization of ESS cost, enhancement of EVs' resilience, and reduction of ???



The large-scale grid-connection of wind power has brought new challenges to safe and stable operation of the power system, mainly due to the fluctuation and randomness wind power output (Yuan et al., 2018, Yang Li et al., 2019). To mitigate the impact of new energy sources on the grid, it is effective to incorporate a proportion of energy storage within wind farms.



In this proposed EV charging architecture, high-power density-based supercapacitor units (500 ??? 5000 W / L) for handling system transients and high-energy density-based battery units (50 ??? 80 W h / L) for handling average power are combined for a hybrid energy storage system. In this paper, a power management technique is proposed for the



Bidirectional charging permits power to be transferred from the vehicle's charging station to the battery while driving on a public road; also known as "charging" to provide energy to a structure, the grid, or a home . Potentially alleviating some of the stress experienced by EV owners and lowering the amount of energy storage required



Depth of discharge: P b: Battery charging/discharging power: DP: Virtual power plant: MG: Microgrid: V2G: Vehicle to grid (discharge) MILP: Both types are designed with a longer energy storage duration and a higher charge/discharge rate than other battery types. However, Na???S requires an extreme operation environment (more than 300

CHARGING DEPTH OF ENERGY STORAGE POWER STATION



In this paper, we propose a dynamic energy management system (EMS) for a solar-and-energy storage-integrated charging station, taking into consideration EV charging demand, solar power generation, status of energy storage system (ESS), contract capacity, and the electricity price of EV charging in real-time to optimize economic efficiency



This paper presents mixed integer linear programming (MILP) formulations to obtain optimal sizing for a battery energy storage system (BESS) and solar generation system in an extreme ???



Pumped-Hydro Energy Storage Potential energy storage in elevated mass is the basis for . pumped-hydro energy storage (PHES) Energy used to pump water from a lower reservoir to an upper reservoir Electrical energy. input to . motors. converted to . rotational mechanical energy Pumps. transfer energy to the water as . kinetic, then . potential energy



For a battery energy storage system to be intelligently designed, both power in megawatt (MW) or kilowatt (kW) and energy in megawatt-hour (MWh) or kilowatt-hour (kWh) ratings need to be specified. The power-to-energy ratio is normally higher in situations where a large amount of energy is required to be discharged within a short time period



Considering the influence of energy storage charge and discharge times and depth on life, a mathematical model of profit maximization of wind-solar storage power stations was established in reference . For distribution network planning problem of distributed energy storage power station, this paper puts forward a distributed energy storage

CHARGING DEPTH OF ENERGY STORAGE POWER STATION



Therefore, the energy storage power stations are distributed according to the charge-discharge ratio (charging 1:2, discharging 2:1), and the charge-discharge power of each energy storage station can be adjusted in real time according to the charge-discharge capacity of each energy storage station, effectively avoiding the phenomenon of over



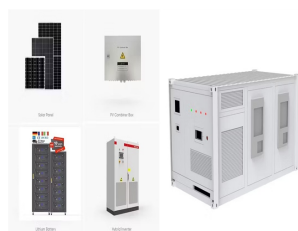
Since the peak depth potential for charging and discharging is 12.83 % P_e and 6.86 % P_e respectively, the manuscript has some limitations. The manuscript provides the combination of a 600 MW coal-fired power plant with molten salt energy storage, and discusses its coupling method and provides possible ways of peaking. However, for other



power grid, but charging station utilization there will never exceed 80 kW average over 24 hours. A 500-kWh 99th percentile day in the fifth year of charging minimum battery-buffered DCFC energy storage station operation. capacity in the reference tables in the Appendix. 7 . Battery Buffered Fast Charging



3 ? 4. Evaluate the Charging and Discharging Rate. Charging and discharging rates affect how quickly the battery can be charged or used. This is especially important if you need rapid energy storage or quick discharge for ???



Tehachapi Energy Storage Project, Tehachapi, California. A battery energy storage system (BESS) or battery storage power station is a type of energy storage technology that uses a group of batteries to store electrical energy. Battery storage is the fastest responding dispatchable source of power on electric grids, and it is used to stabilise those grids, as battery storage can ???

CHARGING DEPTH OF ENERGY STORAGE POWER STATION



Energy Storage Systems (ESS) 1 1.1 Introduction 2 1.2 Types of ESS Technologies 3 Depth of Discharge DOD Direct Current DC Charging Stations Power Plant Solar Panels Substation ESS Office Buildings Hospital Housing Estates ??? Energy Arbitrage ntern gl tiga Mtenmti???t i i yc



Energy storage has become a fundamental component in renewable energy systems, especially those including batteries. However, in charging and discharging processes, some of the parameters are not



A bidirectional EV can receive energy (charge) from electric vehicle supply equipment (EVSE) and provide energy to an external load (discharge) when it is paired with a similarly capable EVSE. Bidirectional vehicles can provide backup power to buildings or specific loads, sometimes as part of a microgrid, through vehicle to building (V2B)



This article provides a comprehensive guide on battery storage power station (also known as energy storage power stations). These facilities play a crucial role in modern power grids by storing electrical energy for later use. The guide covers the construction, operation, management, and functionalities of these power stations, including their contribution to grid stability, peak ???

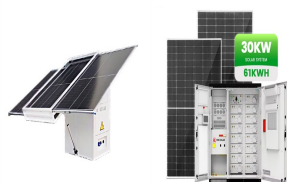


At their optimal locations, electric vehicle charging stations are essential to provide cheap and clean electricity produced by the grid and renewable energy resources, speeding up the adoption of electric vehicles (Alhazmi et al., 2017, Sathaye and Kelley, 2013). Establishing a suitable charging station network will help alleviate owners' anxiety ???

CHARGING DEPTH OF ENERGY STORAGE POWER STATION



The rational allocation of a certain capacity of photovoltaic power generation and energy storage systems(ESS) with charging stations can not only promote the local consumption of renewable energy(RE) generation, but also participate in the energy market through new energy generation systems and ESS for arbitrage.



It means that higher energy is wasted (during charge-discharge) when flow batteries are preferred over Lithium-ion batteries. Usable Energy: For the above-mentioned BESS design of 3.19 MWh, energy output can be considered as 2.64 MWh at the point of common coupling (PCC). This is calculated at 90% DoD, 93% BESS efficiency, ideal auxiliary