

CHARGING IN ENERGY STORAGE



Can EV charging improve sustainability? A key focal point of this review is exploring the benefits of integrating renewable energy sources and energy storage systems into networks with fast charging stations. By leveraging clean energy and implementing energy storage solutions, the environmental impact of EV charging can be minimized, concurrently enhancing sustainability.



What is EV charging strategy? The strategy for charging Electric Vehicles (EVs) involves implementation through an aggregation agent, coordinated with Renewable Energy (RES) power plants, and relies on smart-grid technologies such as smart meters, ICT, and energy storage systems (ESSs) to manage and optimize the charging process.



What is a battery energy storage system? Battery energy storage systems (BESS) Electrochemical methods, primarily using batteries and capacitors, can store electrical energy. Batteries are considered to be well-established energy storage technologies that include notable characteristics such as high energy densities and elevated voltages .



Could a flexible self-charging system be a solution for energy storage? Considering these factors, a flexible self-charging system that can harvest energy from the ambient environment and simultaneously charge energy-storage devices without needing an external electrical power source would be a promising solution.



What is energy storage capacity? Energy storage capacity is a battery's capacity. As batteries age, this trait declines. The battery SoH can be best estimated by empirically evaluating capacity declining over time. A lithium-ion battery was charged and discharged till its end of life.

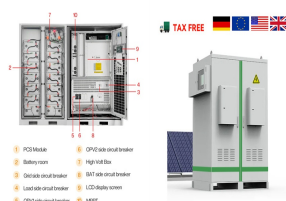
CHARGING IN ENERGY STORAGE



What are energy storage systems? Energy storage systems are designed to capture and store energy for later utilization efficiently. The growing energy crisis has increased the emphasis on energy storage research in various sectors. The performance and efficiency of Electric vehicles (EVs) have made them popular in recent decades.



Jule offers electric vehicle fast charging and backup energy storage solutions. Discover how our battery charging solutions can be deployed at your site today. Forgo grid upgrade costs by leveraging stored power and take advantage of our systems bi-directional capabilities. Interested in learning how we can install our EV charging solution at your site for free?



Battery energy storage is becoming an important part of modern power systems. As such, its operation model needs to be integrated in the state-of-the-art market clearing, system operation, and investment models. However, models that commonly represent operation of a large-scale battery energy storage are inaccurate. A major issue is that they a?)



However, there exists a requirement for extensive research on a broad spectrum of concerns, which encompass, among other things, the selection of appropriate battery energy storage solutions, the development of rapid charging methodologies, the enhancement of power electronic devices, the optimization of conversion capabilities, and the



Along with our energy storage systems for EV charging, our DPS-500 DC-to-DC Converter can also be utilized to connect a solar PV array to an EV station, providing power from renewable energy. Related Products. MPS-125 Energy Storage Inverter. CPS-1500 / a?)



Fast-charging energy storage devices have recently attracted immense attention and are conspicuous for powering individual electronic devices and electric vehicles at full capacity for several minutes [135]. SCs are high-power energy storage devices that store charge at the interface of

CHARGING IN ENERGY STORAGE

electrodes and electrolytes.

CHARGING IN ENERGY STORAGE



A demand charge is a fee based on the highest rate, measured in kilowatts (kW), at which electricity is drawn during any 15- to 30-minute interval in the monthly billing period. This is separate from the charge paid for the actual energy consumed, which is measured in kilowatt-hours (kWh).



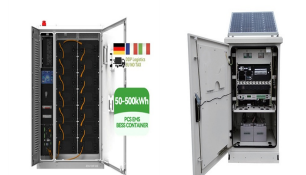
Lithium-ion (Li-ion) batteries exhibit advantages of high power density, high energy density, comparatively long lifespan and environmental friendliness, thus playing a decisive role in the development of consumer electronics and electric vehicle s (EVs) [1], [2], [3]. Although tremendous progress of Li-ion batteries has been made, range anxiety and time a?



The charging energy received by EV i a?? is given by (8). In this work, the CPCV charging method is utilized for extreme fast charging of EVs at the station. In the CPCV charging protocol, the EV battery is charged with a constant power in the CP mode until it reaches the cut-off voltage, after which the mode switches to CV mode wherein the voltage is held constant a?



This report describes development of an effort to assess Battery Energy Storage System (BESS) performance that the U.S. Department of Energy (DOE) Federal Energy Management Program (PV) +BESS systems. The proposed method is based on actual battery charge and discharge metered data to be collected from BESS systems provided by federal



Energy storage is the capture of energy produced at one time for use at a later time [1] A capacitor can store electric energy when disconnected from its charging circuit, so it can be used like a temporary battery, or like other types of rechargeable energy storage system. [73]

CHARGING IN ENERGY STORAGE



Global investment in battery energy storage exceeded USD 20 billion in 2022, predominantly in grid-scale deployment, which represented more than 65% of total spending in 2022. One example would be ending the double charging of taxes or certain grid fees. Transmission and distribution investment deferral (using storage to improve the



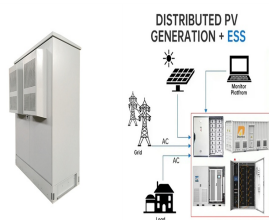
During charging, air is compressed and stored with additional electricity, and the compression heat is stored in a thermal energy storage (TES) unit for future use. During discharging, air is released, either heated by burning fuel or stored thermal energy to generate electricity [13], [15] .



Energy storage has become a fundamental component in renewable energy systems, especially those including batteries. However, in charging and discharging processes, some of the parameters are not



An air-rock bed thermal storage system was designed for small-scale powered generation and analyzed with computational fluid dynamics (CFD) using ANSYS-Fluent simulation. An experimental system was constructed to compare and validate the simulation model results. The storage unit is a cylindrical steel container with granite rock pebbles as a a?|



The control of solar-powered grid-connected charging stations with hybrid energy storage systems is suggested using a power management scheme. Due to the efficient use of HESSs, the stress on the battery system is reduced during normal operation and sudden changes in load or generation. The proposed scheme ensures effective power sharing

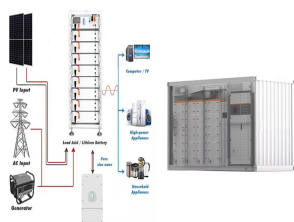
CHARGING IN ENERGY STORAGE



Renewable resources, including wind and solar energy, are investigated for their potential in powering these charging stations, with a simultaneous exploration of energy storage systems to



In this paper, we propose a dynamic energy management system (EMS) for a solar-and-energy storage-integrated charging station, taking into consideration EV charging demand, solar power generation, status of energy storage system (ESS), contract capacity, and the electricity price of EV charging in real-time to optimize economic efficiency



Behind the Meter Energy Storage (BTMS) to Mitigate Costs and Grid Impacts of Fast EV Charging. Key Question: Energy Charge Schedule. Demand Charge Schedule. Energy Charge Schedule. Results preview: Utility rate schedules have a significant impact on LCOC and system configuration.



battery with 1 MW of power capacity and 4 MWh of usable energy capacity will have a storage duration of four hours. a?c Cycle life/lifetime. is the amount of time or cycles a battery storage system can provide regular charging and discharging before failure or significant degradation. a?c Self-discharge. occurs when the stored charge (or energy



PCM capsules are typically applied as the minimum heat storage unit in the packed-bed thermal energy storage (PBTES) system, which is a thermal storage structure originating from sensible heat storage [23, 24]. In the PBTES system, PCM capsules are stacked in single or multiple layers in a thermal storage tank to form a porous medium.



Battery energy storage systems (BESS) are a way of providing support to existing charging infrastructures. During peak hours, when electricity demand is high, BESS can provide additional power to charging stations. This ensures stable charging without overloading the grid, preventing

CHARGING IN ENERGY STORAGE

disruptions, and optimizing the overall charging experience.

CHARGING IN ENERGY STORAGE



The idea behind using DC-fast charging with a battery energy storage system (BESS) is to supply the EV from both grid and the battery at the same time. This way the demand from the grid is smaller. Once the charging is complete and the EV is disconnected, however, the battery is charged even in the absence of an EV.



Battery energy storage systems can enable EV charging in areas with limited power grid capacity and can also help reduce operating costs by reducing the peak power needed from the power grid each month. An analysis by the National Renewable Energy Laboratory (NREL) shows that appropriately sized battery-buffered systems can reduce



Motivated by the potential of utilizing used electric vehicle (EV) batteries as the battery energy storage system (BESS) in EV charging stations, we study the joint scheduling of BESS operation and deferrable EV charging load (with the same deadline) in the presence of random renewable generation, EV arrivals, and electricity prices.



At present, renewable energy sources (RESs) and electric vehicles (EVs) are presented as viable solutions to reduce operation costs and lessen the negative environmental effects of microgrids (1/4 Gs). Thus, the rising demand for EV charging and storage systems coupled with the growing penetration of various RESs has generated new obstacles to the a?|



One significant challenge for electronic devices is that the energy storage devices are unable to provide sufficient energy for continuous and long-time operation, leading to frequent recharging or inconvenient battery replacement. To satisfy the needs of next-generation electronic devices for sustainable working, conspicuous progress has been achieved regarding the a?|

CHARGING IN ENERGY STORAGE



In this review, a systematic summary from three aspects, including: dye sensitizers, PEC properties, and photoelectronic integrated systems, based on the characteristics of rechargeable batteries and the a?]



Here, we show that fast charging/discharging, long-term stable and high energy charge-storage properties can be realized in an artificial electrode made from a mixed electronic/ionic conductor