

CHIFENG RANGE EXTENDER DOES NOT GENERATE ELECTRICITY



What if the range extender does not detect 5GHz Wi-Fi?

Scenario/Phenomenon: The range extender does not detect the router's 5GHz Wi-Fi/5GHz Hotspot Wi-Fi. ** If the range extender detects the 5GHz Wi-Fi of the host router but fails to connect to it / the 5GHz LED is off after set up, refer to this FAQ. Troubleshooting suggestions: 1. Locate RE closer to main router during set up. 2.



Can a Wi-Fi extender be used on a 5GHz band? Some Wi-Fi extenders operate on both the 2.4GHz band and the 5GHz band. If your Wi-Fi router only supports 2.4GHz, the extender can of course still be used, but performance may vary depending on which band is used.



Why is my WiFi extender not working? It is likely that your extender is placed at the borderline of the signal range covered by your main WiFi router. Moving your extender closer to the main WiFi router will most likely resolve this. If you are using WEP security, make sure that you are typing the wireless key in the correct field.



How does a WiFi extender work? they go on and off as devices connect to those bands on the extender. And between your router's WiFi and the different WiFi bands on the extender, it leaves a lot for devices to connect to. As well as the extender does band steering. Meaning it can move a device from 2.4GHz to 5GHz as needed for bandwidth/distance issues.



Can I use a Wi-Fi extender if my router only supports 2.4GHz? If your Wi-Fi router only supports 2.4GHz, the extender can of course still be used, but performance may vary depending on which band is used. Make sure to purchase the version intended for your region, to ensure compatibility with power standard and power connections and local regulations.

CHIFENG RANGE EXTENDER DOES NOT GENERATE ELECTRICITY



Does TP-Link Range Extender support 5GHz? Notice for the (EU)Version TP-Link Range Extenders: The range extenders with EU version,which can be verified by the device bottom sticker,only supports Band 1/2/3,they don't support Band 4 channels on 5GHz to comply with CE certification in Europe. If your host Wi-Fi is fixed on Band 4 channels,the TP-Link range extender will not see it.



An ICE range extender generates electricity from gasoline using a fuel converter. Some examples of ICE range extending EVs include the Chevrolet Volt and the BMW i3. A fuel cell REEV contains a tank of hydrogen fuel, which gets converted into usable electricity using a fuel cell. An FPLG range extender uses a combustion and linear generator to



Mesh Wi-Fi 6E Range Extender. Broader Coverage. RE815XE's four external antennas create a stable wireless connection to any WiFi router, boosting your network's coverage. 6x high-power FEM provide maximum WiFi performance, so your phones and tablets stay connected as you move throughout your home.



Just does not turn and I fiddle and finally it will turn. Is there a trick? Second - it appears that the Range Extender Battery is in very short supply (none available) so that worrying about how to deal with discharge and throwing in a second Range Extender is a non-issue unfortunately. And to 6zfshdb



Before installing the Range Extender, make sure your Ring Alarm is disarmed. To install the Range Extender: Open the Ring app to the main dashboard. Scroll to the bottom and tap Set Up a Device. Tap . Security. Tap . Range Extender. Follow the in-app instructions to complete setup.

CHIFENG RANGE EXTENDER DOES NOT GENERATE ELECTRICITY



Hallo Community, this is my first post here. I really like the ConBee Gateway and use it since almost 3 years. But sometimes i do not understand the behaviour. I trying to optimize my ZigBee MESH using LQI. I added two additional IKEA range extenders to act as routers. In terms of the new Beta functionality Source Routing Routers are meant as Hops? As a?|



And one of the common issues is not getting power after turning on the generator. Well, nothing can be more frustrating than when your generator runs but no power. This issue can occur due to several factors, but luckily you a?|



1 . Battery Capacity and Charging. The BMW i3 electric features a 33 kWh battery pack that provides an electric range of up to 153 miles on a single charge. Charging the battery can be a?|

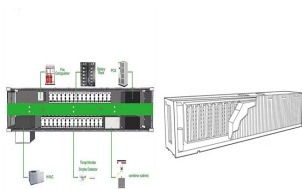


Without it I don't think the Range Extender is much help. BMW says real range on battery is 80 to 100 miles and the Range Extender is good for 60. Gas stations are never spaced exactly where they need to be either. The range extender comes on when the battery is down to 20%. The car will be out of fuel and back on battery after about 120 or 130



Additionally, the range extender runs at an optimal speed a?? ideal for generating electricity. On the other hand, conventional combustion engines frequently change speeds to match a car's power demands. An electric car range extender does not consume the same amount of fuel as a conventional petrol vehicle. Consequently, this means a

CHIFENG RANGE EXTENDER DOES NOT GENERATE ELECTRICITY



The web assistant confirms that my extender is connected to the router (and all the blue lights apart from 2.4 and 5 GHz are illuminated and steady. I assume the problem is that for some reason my laptop / device is not connected to the extender. I have no idea why or a?)



I can connect to the range extender perfectly fine, and it all works normally, but when I attempt to connect to the router it says, "Connected, no Internet." I've tried everything a?)



One increasingly popular solution to this problem is the range extender, a type of small internal combustion (IC) engine used as a generator to drive a car's electric motor or to recharge its batteries. Powering a generator that provides electricity directly to a vehicle's electric motor, the system is optimised to generate power at



Are you sure your generator has refused to generate electricity? How do you know? You access a generator's output via the outlet. But what happens when the outlet develops a fault? The a?)



An REEV often uses a simple series hybrid powertrain configuration, as shown in Figure 1. There are several different types of range extenders, including ICE, fuel cell, free-piston linear generator (FPLG), and micro gas turbine (MGT). An ICE a?)

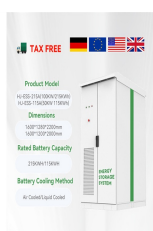
CHIFENG RANGE EXTENDER DOES NOT GENERATE ELECTRICITY



The portfolio ranges from range extenders based on combustion engines in BEVs to plug-in hybrid vehicles. HYDROGEN FOR STORING RENEWABLE ELECTRICITY A BEV that does not produce pollutant emissions is only feasible with a completely zero emission electrical supply. The establishment of a zero emission electricity supply will require many



For detailed instructions on Nighthawk Tri-band extender log in, see How to log into the Nighthawk Tri-Band WiFi Range Extender. How do I setup my WiFi range extender? For setup instructions on various NETGEAR models, see Installing and configuring NETGEAR WiFi Range Extenders. Where can I find videos on range extender setup?



The following product support and knowledge base article links are to assist with troubleshooting NETGEAR Wi-Fi Range Extenders. For installation and setup assistance, see Installing and configuring NETGEAR WiFi Range Extenders.. User manuals and firmware updates for NETGEAR products can be downloaded from NETGEAR Support.. If you are having a?|



I bought the wifi extender to use in the bedroom. I am only using a Roku in there and the roku signal shows poor. After setting up the extender, the signal shows good. I am very pleased! I am wondering if I should power off the extender when I am not using the tv. It is the only device that I need to use the extender for.



I am using my college network through my own wifi range extender TP-Link TL-WA750RE, because i got weak signals, but the problem is other student use my extender as free of charge, because my main college a?|

CHIFENG RANGE EXTENDER DOES NOT GENERATE ELECTRICITY



A range extender serves as a secondary onboard power generator for when the electric batteries do not have any charge left in them. The range extender works by sending emissions to the electric engine to keep it going. Here are the 13 electric vehicles that come with range extenders.



Solution: Check the client list of the router, make sure the extender in the list. If not, please hard reset the extender and try to reconfigure via WPS/web UI/Tether. Check the IP and gateway information of the extender and follow the instruction below to do the troubleshooting.
Solution: check the solution below.



With the generator running, make sure the AC power is turned on and the breaker is not tripped. Use a multimeter to measure the AC voltage by placing the black lead in the smaller slot on the right (of a 120v outlet) and the red lead in the longer slot on the left. If you are not getting any reading, you might have a bad outlet.



The current market of range extenders models. BMW i3 Range Extender - 0.6-liter two-cylinder gas engine Chevrolet Volt - 1.5-liter four-cylinder gas engine Fisker Karma - 2.0-liter four-cylinder gas engine Opel Ampera - 1.4-liter four-cylinder gas engine Toyota Prius Prime a?? A plug-in hybrid with an EV range extender. It has a 8.8 kWh battery



1 . Battery Capacity and Charging. The BMW i3 electric features a 33 kWh battery pack that provides an electric range of up to 153 miles on a single charge. Charging the battery can be conveniently done at home using a standard household outlet or at public charging stations using a variety of charging options.. The BMW i3 range extender retains the same battery capacity a?|

CHIFENG RANGE EXTENDER DOES NOT GENERATE ELECTRICITY



14 . We need to generate more electricity. Two rotors will generate more power, Unlike the range-extender configuration, the electric motors can be switched off, allowing the a?|



The web assistant confirms that my extender is connected to the router (and all the blue lights apart from 2.4 and 5 GHz are illuminated and steady. I assume the problem is that for some reason my laptop / device is not connected to the extender. I have no idea why or what to do about it. I should appreciate any help anyone feels able to offer.



About My "Outdoor WiFi Range Extender" Guide. There wasn't much research to do as outdoor home WiFi range extenders are not in abundancea??yet. However, it's vital to choose those that have proper protection from the elements. Also, some are more reliable than others, and I've found 8 products worthy of review.



An ICE range extender generates electricity from gasoline using a fuel converter. Some examples of ICE range extending EVs include the Chevrolet Volt and the BMW i3. A fuel cell REEV contains a tank of hydrogen a?|



I have a MAC address based filtering on the main router. I do not want to delegate it to the repeater / range extender. I have used tplink tlwa854re. It works in proxy mode and assigns a virtual mac address to the devices that are connected to it. It changes its own MAC address before connecting to the main router.