

COMMED SOLAR SUPPORT INSTALLATION



Does ComEd offer net metering? Homes with on-site solar panels participate in Net Metering through ComEd. And Net Metering customers have a unique opportunity to save with Hourly Pricing. Homeowners with solar installations can increase their savings with Hourly Pricing.



What is ComEd's hourly pricing & solar energy? Maximize your savings from solar generation. With ComEd's Hourly Pricing and solar energy, you could spend less money on your monthly energy bills and more on what matters most to you, like saving up for a rainy day. ComEd's Hourly Pricing is an electric supply rate that lets you pay for electricity at the hourly market price.



What is community solar? As part of our commitment, ComEd supports community solar as an opportunity for customers to benefit from solar energy. For over a century, energy was primarily generated at large central plants, often at considerable distance from the customer. With community solar, a solar generating system provides benefits to community members.



How does community solar work? Homes and businesses earn bill credits by subscribing to a Community Solar project. 2. Community Solar Farm of Solar Panels owned and operated by a Community Solar Developer. 3. Energy Generated Energy generated by Community Solar flows to the energy grid to become part of the overall energy supply. 4. Energy Delivery



What is subscription-based community solar? Through subscription-based community solar, customers subscribe to a portion of the electricity generated and receive credits on their bill for the solar energy produced by the community solar generating system. Solar is growing and more solar developers are entering the arena. That means more options for you!

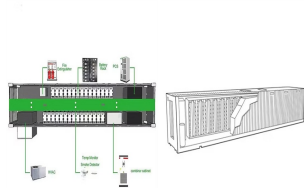
COMMED SOLAR SUPPORT INSTALLATION



Gov. Pritzker Joins ComEd to Present G& W Electric with Record High \$2.6 Million Rebate for Largest Commercial Solar/Storage Installation in Illinois Business Wire Mon, Apr 15, 2024, 2:30 PM 6 min read



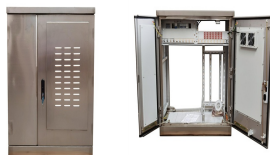
Discussion of solar photovoltaic systems, modules, the solar energy business, solar power production, utility-scale, commercial rooftop, residential, off-grid systems and more. Solar photovoltaic technology is one of the great developments of the modern age. Improvements to design and cost reductions continue to take place.



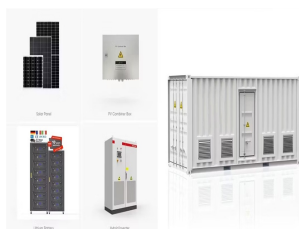
In this guide, we'll explain a typical solar panel installation from start to finish, as well as what all the hardware does, and where on your property you can install the panels. If you're interested in how much you could save with a solar & battery system, click the button below, enter a few details, and we'll generate an estimate.



ComEd, a leading utility company, recognizes the environmental benefits of EVs and aims to support their adoption through its EV Charger Installation Rebate Program. This program is designed to make it easier and more affordable for homeowners to install EV chargers at home by providing financial incentives.



The rooftop and community solar calculators also provide information on customer assistance programs, including Illinois Solar for All, which helps customers who may qualify for more affordable solar installation or community solar subscriptions through state incentives. CEJA, which was enacted in 2021, increases funding for Illinois Solar for All from ???



If you are interested in getting the full net metering benefit, CUB recommends that you explore if it's realistic to install solar panels before the end of the year. The law sets a deadline of Dec. 31, 2024, and based on ???

COMMED SOLAR SUPPORT INSTALLATION



A solar energy system, or solar PV system (photovoltaic system), uses individual solar cells on a solar panel to capture sunlight and convert it into energy. Customers can use ComEd's solar calculator to evaluate the solar potential of their roof, estimate the number solar panels required, and calculate potential savings, rebates, and more.



When the system is installed with solar, Powerwall stores the excess solar energy produced to power the home when the sun isn't shining.

Installation should only be performed by a Tesla Certified Installer.

Additionally, installation videos can be found through our Installer Academy or Tesla One. Download the Tesla One app to get started.



Receipt of a distributed generation rebate requires customers to receive a lower credit rate for net-metered electricity; the credit rate is the same as that received by community solar subscribers, including the energy supply, capacity, and transmission values but not delivery service charges.



Pritzker, ComEd celebrate solar installation project milestone 00:45.

CHICAGO (CBS) ??? Gov. JB Pritzker along with green energy activists in Chicago Heights celebrated a major milestone Thursday



Through the proposed solar rebate, ComEd would provide a rebate of \$1,000 per KW of installed solar capacity to residential customers and \$500 per KW to commercial and industrial customers



Homes with on-site solar panels participate in Net Metering through ComEd. And Net Metering customers have a unique opportunity to save with Hourly Pricing. Homeowners with solar installations can increase their savings with Hourly ???

COMMED SOLAR SUPPORT INSTALLATION



solar panels installed on the roof of the St. Paul Early Childhood Center have a generating capacity of approximately 91.9 kW. "Our roof-top solar installation is enabling us to realize meaningful savings on our ???



ComEd's hosting capacity maps support the goals of Illinois' Climate and Equitable Jobs Act (CEJA), which doubles the state's investment in renewable energy and puts Illinois on a path to 40% renewable energy by 2030 and 50% by 2040.. CEJA's incentives for installation of solar include the Distributed Generation (DG) Rebate program for residential and ???



The Dearborn Homes public housing development that serves more than 600 families in Chicago's Bronzeville neighborhood now has a new power source: a 750-kW solar array. The solar installation completed this month supports ComEd's Bronzeville Community microgrid, a small power grid that can generate its own power to keep electricity flowing



While long, sunny, summer days have come to an end, the solar industry is in business all year long. On Sept. 8, ComEd hosted a Solar Forum with 120 solar developers to share the company's efforts to streamline the process of connecting more solar to the power grid and on plans for leveraging new funding available from the Climate and Equitable Jobs Act ???



Commonwealth Edison Company (ComEd) provides electric service to approximately 3.8 million customers across northern Illinois, or 70 percent of the state's population. ComEd is a subsidiary of Exelon Corporation (NYSE: EXC), the nation's leading competitive energy supplier

COMMED SOLAR SUPPORT INSTALLATION



Through the \$5 million EV Charger and Installation Rebate Program, ComEd customers can receive rebates of up to \$3,750 to offset the cost of purchasing and installing a Level 2 charger in their



ComEd and the Illinois Clean Energy Community Foundation (ICECF) announced nearly \$200,000 in grants to support the installation of solar photovoltaic (PV) electric generation systems at 14 schools in ComEd's service territory in northern Illinois. The funding for each selected school includes \$10,000 from ICECF to pay for the cost of the



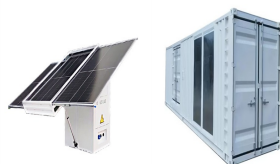
To order new service installation, or to change or remove service facilities, call ComEd's New Business hotline at (866) NEW-ELEC (866-639-3532). Please have the street address, contact information, and details about the proposed work available when you call.



In 2021, statewide legislation was passed requiring electric utilities in Illinois to implement changes to how they apply community solar bill credits. These changes were to be implemented by all electric utilities on June 1, 2022. ComEd successfully implemented these changes on June 1, 2022.



The solar and battery storage- the largest such installation in a commercial and industrial setting in Illinois - support G& W Electric's microgrid, a small power grid that can operate connected to, or independently from, the ComEd electric grid to meet demand within a defined electrical boundary.



To order new service installation, or to change or remove service facilities, call ComEd's New Business hotline at (866) NEW-ELEC (866-639-3532). Please have the street address, contact information, and details about the proposed work

COMMED SOLAR SUPPORT INSTALLATION



Ensure no other contractors or workers will be on site during your solar installation. We cannot perform the installation if other workers are on site. Someone 18 years or older must be home during the first day of installation. Most installations are completed within one day, but larger or more complex systems can take two or more days.