

# COMMERCIAL ENERGY STORAGE LITHIUM BATTERY TECHNOLOGY



Commercial solar battery storage systems have the capability to provide backup power to your business, much like diesel standby generators. These commercial battery storage systems store power to release during periods of power outage and capture any excess energy generation.. This gives you peace of mind that your site will continue to operate in the event of power supply ???



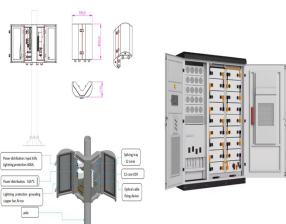
Sodium-ion is one technology to watch. To be sure, sodium-ion batteries are still behind lithium-ion batteries in some important respects. Sodium-ion batteries have lower cycle life (2,000???4,000 versus 4,000???8,000 for lithium) and lower energy density (120???160 watt-hours per kilogram versus 170???190 watt-hours per kilogram for LFP).



Based on cost and energy density considerations, lithium iron phosphate batteries, a subset of lithium-ion batteries, are still the preferred choice for grid-scale storage. More energy-dense chemistries for lithium-ion batteries, such as nickel cobalt aluminium (NCA) and nickel manganese cobalt (NMC), are popular for home energy storage and other applications where space is limited.



The integration of Li-ion battery systems in stationary energy storage applications presents substantial economic and operational benefits across various commercial sectors. As the technology continues to evolve, the business landscape will likely see increasing adoption driven by the dual forces of economic incentives and sustainability goals.

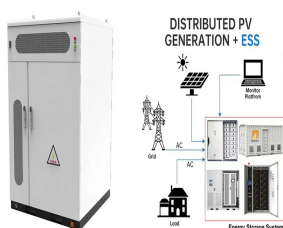


The first rechargeable lithium battery was designed by Whittingham (Exxon) and consisted of a lithium-metal anode, a titanium disulphide ( $\text{TiS}_2$ ) cathode (used to store Li-ions), and an electrolyte ???

# COMMERCIAL ENERGY STORAGE LITHIUM BATTERY TECHNOLOGY



A lithium-ion or Li-ion battery is a type of rechargeable battery that uses the reversible intercalation of Li<sup>+</sup> ions into electronically conducting solids to store energy. In comparison with other commercial rechargeable batteries, Li-ion batteries are characterized by higher specific energy, higher energy density, higher energy efficiency, a longer cycle life, and a longer ???



Today, the market for batteries aimed at stationary grid storage is small???about one-tenth the size of the market for EV batteries, according to Yayoi Sekine, head of energy storage at energy



1 ? The class-wide restriction proposal on perfluoroalkyl and polyfluoroalkyl substances (PFAS) in the European Union is expected to affect a wide range of commercial sectors, including the lithium-ion battery (LIB) industry, where both polymeric and low molecular weight PFAS are used. The PFAS restriction dossiers currently state that there is weak evidence for viable ???



ATB represents cost and performance for battery storage across a range of durations (1???8 hours). It represents lithium-ion batteries only at this time. There are a variety of other commercial and emerging energy storage technologies; as costs are well characterized, they will be added to the ATB.



We are a global focused service provider of photovoltaic energy storage systems, providing a full range of products such as Lithium Batteries, Solar inverters, and Industrial & Commercial Energy Storage System Solution.

# COMMERCIAL ENERGY STORAGE LITHIUM BATTERY TECHNOLOGY



1 Introduction. Lithium-ion batteries (LIBs) have been at the forefront of portable electronic devices and electric vehicles for decades, driving technological advancements that have shaped the modern era (Weiss et al., 2021). Undoubtedly, LIBs are the workhorse of energy storage, offering a delicate balance of energy density, rechargeability, and longevity (Xiang et al., 2021).



Lithium-ion batteries (LIBs), while first commercially developed for portable electronics are now ubiquitous in daily life, in increasingly diverse applications including electric cars, power



Long-duration energy storage (LDES) is the linchpin of the energy transition, and ESS batteries are purpose-built to enable decarbonization. As the first commercial manufacturer of iron flow battery technology, ESS is delivering safe, sustainable, and ???



QuantumScape's innovative solid state battery technology brings us into a new era of energy storage with improved energy density, charging speeds and safety. solid-state lithium-metal battery technology has the potential to increase the If we can generate the same level of performance in our commercial battery cells at our target



ATB represents cost and performance for battery storage across a range of durations (1-8 hours). It represents only lithium-ion batteries (LIBs) - those with nickel manganese cobalt (NMC) and lithium iron phosphate (LFP) ???

# COMMERCIAL ENERGY STORAGE LITHIUM BATTERY TECHNOLOGY



Lithium-ion batteries are the state-of-the-art electrochemical energy storage technology for mobile electronic devices and electric vehicles. Accordingly, they have attracted a continuously increasing interest in academia and industry, which has led to a steady improvement in energy and power density, while the costs have decreased at even faster pace.



- Fire Protection Strategies for Energy Storage Systems, Fire Protection Engineering (journal), issue 94, February 2022 - UL 9540A, the Standard for Test Method for Evaluating Thermal Runaway Fire Propagation in Battery Energy Storage Systems, 2018 - Domestic Battery Energy Storage Systems. A review of safety risks BEIS Research



Battery capacity decreases during every charge and discharge cycle. Lithium-ion batteries reach their end of life when they can only retain 70% to 80% of their capacity. The best lithium-ion batteries can function properly for as many as 10,000 cycles while the worst only last for about 500 cycles. High peak power. Energy storage systems need



Lithium-ion batteries are the dominant energy storage solution in most commercial applications, thanks to their high energy density, scalability, and decreasing costs. As of 2024, lithium-ion batteries cost an average of \$132 per kilowatt-hour (kWh), a significant decrease from the previous decade.



1) Battery storage in the power sector was the fastest-growing commercial energy technology on the planet in 2023. Deployment doubled over the previous year's figures, hitting nearly 42 gigawatts.

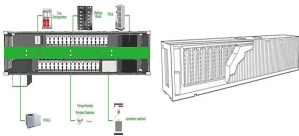
# COMMERCIAL ENERGY STORAGE LITHIUM BATTERY TECHNOLOGY



Conventional energy storage systems, such as pumped hydroelectric storage, lead-acid batteries, and compressed air energy storage (CAES), have been widely used for energy storage. However, these systems



The Shanghai Energy Storage Exhibition/Energy Storage Technology Conference/International Industrial and Commercial Energy Storage Exhibition/Lithium Battery Exhibition will be held from July 24th to 26th, 2024 at the National Convention and Exhibition Center. The exhibition covers an area of over 60000 square meters, with over 80000 professional visitors and over 150



The investment required for a BESS is influenced by several factors, including its capacity, underlying technology (such as lithium-ion, lead-acid, flow batteries), expected operational lifespan, the scale of application



A proper commercial battery energy storage system can save you millions of dollars in annual global adjustment costs. These systems discharge electricity from the batteries in anticipation of the top five Ontario peak demand hours and reduce your Peak Demand Factor ideally to zero. Industry-leading lithium battery technology; Weather



There are different energy storage solutions available today, but lithium-ion batteries are currently the technology of choice due to their cost-effectiveness and high efficiency. Battery Energy Storage Systems, or BESS, are rechargeable batteries that can store energy from different sources and discharge it when needed.

# COMMERCIAL ENERGY STORAGE LITHIUM BATTERY TECHNOLOGY



NATIONAL BLUEPRINT FOR LITHIUM BATTERIES 2021-2030.  
UNITED STATES NATIONAL BLUEPRINT . FOR LITHIUM BATTERIES.  
This document outlines a U.S. lithium-based battery blueprint, developed by the . Federal Consortium for Advanced Batteries (FCAB), to guide investments in . the domestic lithium-battery manufacturing value chain that will bring equitable



Shenzhen Shine Well Power Technology Co., Ltd.(SWP) is a high-tech enterprise focusing on the R& D, manufacturing and sales of lithium batteries. Our factory is located in Wan'an Industrial Park, Ji'an City, Jiangxi Province, covering an area of 40,000 square meters, with a total investment of 1 billion yuan. And the production capacity has reached 2 GWh annually.SWP is ???