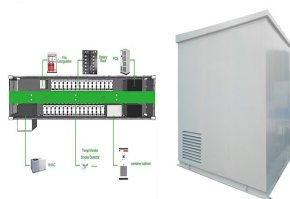


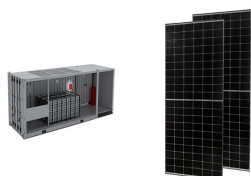
CONSOL ENERGY INC GERMANY



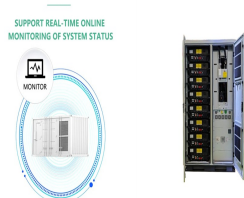
2 ? WKN A2H68W | ISIN US20854L1089 | Consol Energy Inc Aktie mit aktuellem Realtime Kurs, Chart, Nachrichten, Fundamentaldaten, Analysen, Meinungen & Empfehlungen.



CONSOL Innovations LLC, a wholly-owned subsidiary of CONSOL Energy Inc., is dedicated to creating long-term value through sustainable innovations in the carbon products and materials and carbon management markets. With a mission to "Reimagine Carbon for a Sustainable Future," CONSOL Innovations is founded on the belief that our abundant



1 ? We recently compiled a list of the 10 Best Stocks to Buy According to Billionaire David Einhorn. In this article, we are going to take a look at where CONSOL Energy Inc. (NYSE:CEIX) stands against



4 ? CONSOL Energy Inc. has a 12 month low of \$75.43 and a 12 month high of \$134.59. CONSOL Energy (NYSE:CEIX ??? Get Free Report) last announced its quarterly earnings data on Tuesday, November 5th



CANONSBURG, Pa., Nov. 5, 2024 /PRNewswire/ -- Today, CONSOL Energy Inc. (NYSE: CEIX) reported financial and operating results for the period ended September 30, 2024. Third Quarter 2024 Highlights



About CONSOL Energy Inc. CONSOL Energy Inc. (NYSE: CEIX) is a Canonsburg, Pennsylvania-based producer and exporter of high-Btu bituminous thermal coal and metallurgical coal. It owns and operates

CONSOL ENERGY INC GERMANY



2 ? Get Our Latest Report on CONSOL Energy. CONSOL Energy Trading Down 1.8 %. NYSE CEIX opened at \$109.89 on Thursday. CONSOL Energy Inc. has a 52 week low of \$75.43 and a 52 week high of \$134.59.



4 ? Wellington Management Group LLP lifted its position in shares of CONSOL Energy Inc. (NYSE:CEIX - Free Report) by 16.8% in the third quarter, according to the company in its most recent disclosure with the Securities and Exchange Commission. The firm owned 59,560 shares of the company's stock after



CONSOL Energy Inc. (NYSE:CEIX) is an energy company that produces and sells bituminous coal. Its PAMC segment engages in the mining, preparing, and marketing of bituminous coal to power generators

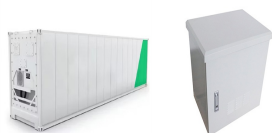


About CONSOL Energy Inc. CONSOL Energy Inc. (NYSE: CEIX) is a Canonsburg, Pennsylvania-based producer and exporter of high-Btu bituminous thermal coal and metallurgical coal. It owns and operates some of the most productive longwall mining operations in the Northern Appalachian Basin and developed a new metallurgical coal mine, the Itmann ???



About CONSOL Energy Inc. CONSOL Energy Inc. (NYSE: CEIX) is a Canonsburg, Pennsylvania-based producer and exporter of high-Btu bituminous thermal and crossover metallurgical coal. It owns and

CONSOL ENERGY INC GERMANY



DBRS Confirms CONSOL Energy Inc. at BB; Issuers. CONSOL Energy Inc. Contacts. Robert Mantse Senior Vice President - Mining +1 416 597 7544 DRO affiliate); DBRS Limited (Ontario, Canada)(DRO, NRSRO affiliate); DBRS Ratings GmbH (Frankfurt, Germany)(EU CRA, NRSRO affiliate, DRO affiliate); and DBRS Ratings Limited (England and ???



Consol Energy ist ein US-amerikanisches Unternehmen mit Firmensitz im Cecil Township, Pennsylvania. Das Unternehmen wurde 1864 in Cumberland, Maryland als Consolidation Coal Company gegründet. Consol Energy fördert Steinkohle in Pennsylvania. Im Südwesten dieses Bundes???



CANONSBURG, Pa., May 7, 2024 /PRNewswire/ -- Today, CONSOL Energy Inc. (NYSE: CEIX) reported financial and operating results for the period ended March 31, 2024. First Quarter 2024 Highlights



CONSOL Energy Inc. (NYSE: CEIX) is a Canonsburg, Pennsylvania-based producer and exporter of high-Btu bituminous thermal coal and metallurgical coal. It owns and operates some of the most productive longwall mining operations in the Northern Appalachian Basin. CONSOL's flagship operation is the Pennsylvania Mining Complex, which has the



CANONSBURG, Pa., Oct. 13, 2021 /PRNewswire/ -- CONSOL Energy Inc. ("CONSOL," NYSE: CEIX) today advanced its Forward Progress sustainability initiative with the announcement of targets to reduce its direct operating greenhouse gas emissions. The Company has set an interim goal to reduce its direct operating greenhouse gas emissions (referred to as scope 1 and ???

CONSOL ENERGY INC GERMANY



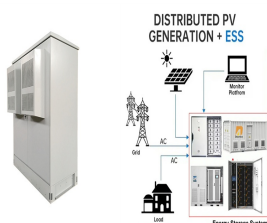
CANONSBURG, Pa., Aug. 8, 2024 /PRNewswire/ -- Today, CONSOL Energy Inc. (NYSE: CEIX) reported financial and operating results for the period ended June 30, 2024. Second Quarter 2024 Highlights



CONSOL Energy Inc. owns thousands of acres of coal and surface properties in support of our coal operations. As our core values of Safety, Compliance and Continuous Improvement guide the way, stewardship of our land assets is a ???



Further strengthening its holdings in this region, CONSOL in 2001 spent another \$158 million to acquire coalbed methane-gas production and pipeline assets from Conoco Inc. Subsidiary CNX Ventures in 2001 formed a joint venture with Allegheny Energy Supply Company to build an 88-megawatt, coalbed-methane-fueled power generating facility, which



Latest CONSOL Energy Inc (CEIX:NYQ) share price with interactive charts, historical prices, comparative analysis, forecasts, business profile and more. Germany; C9X:DEU German Composite; C9X:FRA Frankfurt Stock Exchange; C9X:BER Berlin Stock Exchange; C9X:MUN Munich Stock Exchange;



CONSOL Energy Inc. (NYSE: CEIX) is a Canonsburg, Pennsylvania-based producer and exporter of high-Btu bituminous thermal coal and metallurgical coal. It owns and operates some of the most productive longwall mining operations in the Northern Appalachian Basin and is developing a new metallurgical coal mine (the Itmann project) in the Central

CONSOL ENERGY INC GERMANY



About CONSOL Energy Inc. CONSOL Energy Inc. (NYSE: CEIX) is a Canonsburg, Pennsylvania-based producer and exporter of high-Btu bituminous thermal coal and metallurgical coal. It owns and operates some of the most productive longwall mining operations in the Northern Appalachian Basin. CONSOL's flagship operation is the Pennsylvania Mining



About CONSOL Energy Inc. CONSOL Energy Inc. (NYSE: CEIX) is a Canonsburg, Pennsylvania-based producer and exporter of high-Btu bituminous thermal coal and metallurgical coal. It owns and operates



CONSOL Energy's Board of Directors operates in accordance with these principles and corporate governance processes: After an initial period with a classified board, CONSOL Energy will hold an annual election of directors. Any incumbent director who receives a greater number of votes "withheld" from his or her election those votes "for" his or



CANONSBURG, Pa., Jan. 23, 2023 /PRNewswire/ -- CONSOL Energy Inc. (NYSE: CEIX), a leading producer and exporter of high-Btu power-generating, industrial and metallurgical coals, announced the promotion of Mitesh B. Thakkar to the position of President in addition to his current role as Chief Financial Officer. This promotion is being made as part of the company's ???