

COOL VALLEY ENERGY STORAGE



How to integrate new energy generation with new energy storage? To promote the integration of new energy generation with new energy storage, offshore wind power projects, centralized photovoltaic power stations, and onshore centralized wind power projects must be equipped with new energy storage facilities that are no less than 10% of the installed capacity and have a duration of 1 hour.



Do energy systems need long-term storage? The need for long-term storage really starts to bite when energy systems are made up of more than 80 percent renewable energy. That figure is a very long way off for most countries.



Can gravity storage keep costs down? Photograph: Peter Dibdin
Edinburgh-based energy storage startup Gravitricity has found a novel way to keep the costs of gravity storage down: dropping its weights down disused mineshafts, rather than building towers.



Is gravity a solution to energy storage? But without an easy way to store large amounts of energy and then release it when we need it, we may never undo our reliance on dirty, polluting, fossil-fuel-fired power stations. This is where gravity energy storage comes in. Proponents of the technology argue that gravity provides a neat solution to the storage problem.



36 . Jinko ESS is pleased to announce that it has signed a supply contract with Qidong Kailei Trading Co., Ltd. for 50 units of SunGiga C & I energy storage systems, totalling a a?]

COOL VALLEY ENERGY STORAGE



Rao [78] introduced the performance and advantages of the ITS system in detail, and provided the energy savings of peak-to-valley conversion from a storage medium and other aspects. Guo et al. [79] 5.8.3 Ice-cool thermal energy storage. Ice-cool TES, usually referred as the ITES system, has been developed and used for many years.



Buderus Logamatic controls monitor both indoor and outdoor temperature and accordingly adjusts boiler temperature to actual demand. Lower operating water temperature decreases cool-down and flue gas losses which translate into lower energy consumption and fuel bills. For detailed information Buderus Logamatic controls, please visit



Clearway Energy Group is leading the transition to a world powered by clean energy. Along with our public affiliate Clearway Energy, Inc., our portfolio comprises approximately 11.4 GW of gross generating capacity in 26 states, including 9 GW of wind, solar, and energy storage assets, and over 2.4 GW of dispatchable power generation providing a?



Cedar Valley Energy Storage LP (the "Proponent"), along with its development partner Baseload Power LP, is developing the Cedar Valley Energy Storage Project (the "Project") in the Township of Rideau Lakes, Ontario. The proposed Project is a lithium-ion battery energy storage system connected to Hydro One Network Inc.'s existing transmission electrical infrastructure.



MVP Energy Storage Solutions. As we develop more renewables on an industry level whether it be solar, wind and other condition dependent technologies, energy storage will be key to maintaining a reliable and sustainable grid. Solar and wind generation are heavily dependent on the weather and conditions making renewable energy produced by these

COOL VALLEY ENERGY STORAGE

FLEXIBLE SETTING OF
MULTIPLE WORKING MODES



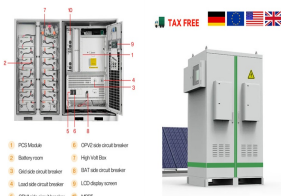
A sleek and space-saving solution for your energy storage needs. With its compact design and easy installation, it seamlessly blends into any environment. Whether in your home, office, or commercial space, our wall-mounted unit provides reliable and efficient energy storage, empowering you to optimize energy usage and reduce waste.



The AMCOR project, the Lancaster Battery Storage project, and the LeConte Energy Storage project a?? totaling 194 MW a?? are scheduled to come online by August 2022. The North Central Valley Energy Storage project and both Daggett projects a?? totaling 193 MW a?? are scheduled to be online by August 2023.



Cool It Storage offers secure, climate-controlled units for all your cold storage needs. Convenient, safe, and accessible 24/7. Contact us today! (877) 960-1511. FAQ; How It Works; Simi Valley, CA 93065 (877) 960-1511; Get Directions. Quick Links. About Us; FAQ; Refrigerators & Freezers;



Zillow has 62 photos of this \$1,400,000 5 beds, 3 baths, 2,980 Square Feet single family home located at 14443 Cool Valley Rd, Valley Center, CA 92082 built in 2024. MLS #240009657.



Mobile Energy Storage System. Industrial & Commercial Energy Storage System. The System offers flexible and modular capacity options from 20kWh to 100kWh, with silent operation a?]



battery storage functions by collecting surplus energy, primarily from home renewables like solar panels, converting it into storable electricity using a battery inverter. This energy is then stored in batteries for later use. During peak demand or when renewables are inactive, the stored power is

COOL VALLEY ENERGY STORAGE

inverted back into usable electricity.

COOL VALLEY ENERGY STORAGE



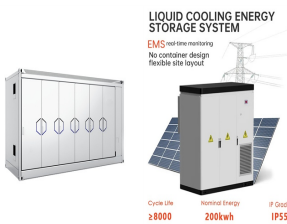
4 beds, 4.5 baths, 5810 sq. ft. house located at 40703 Cool Valley Cir, Aldie, VA 20105 sold for \$1,320,000 on Jul 14, 2023. MLS# VALO2051788. OPEN HOUSE CANCELLED FOR MAY 17TH-UNDER CONTRACT Are y



Updating Cool Thermal Energy Storage Techniques. From eSociety, July 2019. Cool thermal storage has changed significantly since 1993. From the application of cool thermal storage to emergency cooling to using new storage approaches, cool thermal storage techniques have continued to develop without an update to the first edition of the ASHRAE Design Guide for a?]



Valley Forge Impact Parks, emerging nation-wide in Federally Designated Opportunity Zones, are the new Platinum Standard for Big Business/Hyperscaler/Mega Power Consumers. Featuring mega-scale redundant/Clean Energy production, VFI Parks are home to some the most eco-friendly, innovative manufacturers focused on IMPACT while simultaneously



Battery storage systems need to get smaller to meet the increasing need for energy storage. The International Renewable Energy Agency estimates 90 percent of electricity globally could come from renewables by 2050. This shift requires both renewable power generation and energy storage.



The integrated container design solution by Lithium Valley combines intelligent dynamic environmental monitoring systems, environmental support systems, and energy storage monitoring and management systems. It also supports a plug-and-play mode with the grid, providing convenience and efficiency for grid support and regional temporary power

COOL VALLEY ENERGY STORAGE



PG& E has awarded contracts for battery energy storage projects totaling more than 1,000 MW of capacity to be deployed through 2023, all of which contribute to meeting California's ambitious a?]



Follow safety standards for batteries and energy storage systems, such as ANSI/CAN/UL 9540. Ensure that the battery cells are compliant with the IEC62619 safety requirements for secondary lithium cells and batteries, for use in industrial applications. Follow safety and siting recommendations for large battery energy storage systems (BESS).



This is the thirty-fifth article inspired by a recent DOE report covering energy-saving HVAC technologies. Thermal energy storage (TES) systems store a sizeable quantity of "cool" thermal energy that helps meet the cooling load of a building. A typical system consists of a large vessel filled with water or brine that may contain multiple small containers (e.g., encapsulated bricks a?]



Cool Valley Ln, Valley Center CA, is a Single Family home that contains 2592 sq ft and was built in 1993 contains 4 bedrooms and 3 bathrooms. This home last sold for \$1,211,000 in April 2023. The Zestimate for this Single Family is \$1,275,300, which has decreased by \$98,652 in the last 30 days. The Rent Zestimate for this Single Family is a?]

APPLICATION SCENARIOS



An innovative battery energy storage project, using a non-lithium technology, will be deployed at a research center in Arizona. Salt River Project (SRP), the state's community-based, not-for

COOL VALLEY ENERGY STORAGE



The Cool Thermal Energy Storage (CTES) technology, which utilizes Phase Change Materials (PCM) to store energy during low demand periods, is well-suited for meeting peak demand. 1.1. Methods of thermal energy storage. The thermal energy can be stored either in the form of latent or sensible heat, or by a chemical reaction.



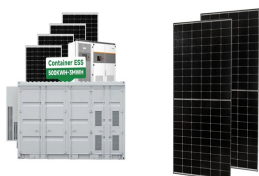
The peak and valley Grevault industrial and commercial energy storage system completes the charge and discharge cycle every day. That is to complete the process of storing electricity in the low electricity price area and discharging in the high electricity price area, the electricity purchased during the 0-8 o'clock period needs to meet the electricity consumption from 8-12 o'clock and a?]



North Central Valley Energy Storage, LLC Prepared by: 1630 San Pablo Avenue, Suite 300 Oakland, California 94612 JULY 2021 DUDEK . 10593.0003 i July 2021 Central Valley of California, with hot dry summers and cool, mild winters. Precipitation averages approximately 12 a?]



An Ice Bank(R) Cool Storage System, commonly called Thermal Energy Storage, is a technology which shifts electric load to off-peak hours which will not only significantly lower energy and demand charges during the air conditioning season, but can also lower total energy usage (kWh) as well. It uses a standard chiller to



NORTH CENTRAL VALLEY ENERGY CENTER About the Project. North Central Valley Project is an innovative battery energy storage project proposed for San Joaquin County, California that features batteries with a capacity of up to 132 megawatts and a 4-hour duration. It provides California with additional flexibility in managing the energy grid