

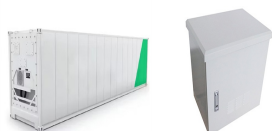
# CYPRUS AUTOMATIC TRANSFER SWITCH SOLAR TO GRID



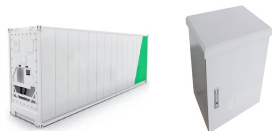
What is a solar automatic transfer switch? An automatic transfer switch,ATS,does that automatically,in your absence. Read more about the solar ATS below. A solar automatic transfer switch is a type of self-acting switch that is specifically designed for use with a solar power system. Solar ATS are typically installed so they connect to the grid,inverter,solar battery,and the load.



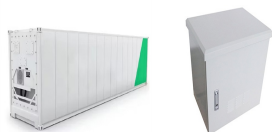
What is the ATS connect solar automatic transfer switch? The ATS CONECT solar automatic transfer switch is designed for solar systems. It also features a true manual bypass switch. This ATS panel is designed for small private power systems with up to 6kW of continuous power. It works with or without storage batteries. The most common installation is directly before the supply point of your house.



Can you use an automatic transfer switch on an off-grid Solar System? You can also use the automatic transfer switch for off-grid solar systems in different electrical systems,whether residential or commercial. That said,the off-grid switch is more common in remote locations where it is not feasible to run a utility line. Also,in RVs when connecting to shore power or generator.



What is a grid-tie solar transfer switch? A grid-tie solar transfer switch is specifically used with a grid-tied solar power system. That means it allows your system to draw power from the grid when necessary,such as during bad weather. These solar transfer switches are typically mounted between the utility meter and the solar inverter.



How does a solar transfer switch work? Solar ATS are typically installed so they connect to the grid,inverter,solar battery,and the load. When battery power goes down,the solar transfer switch will automatically connect your appliances to the grid. This ensures your electrical system continues to operate even when there is no solar power available.

# CYPRUS AUTOMATIC TRANSFER SWITCH SOLAR TO GRID



Can a solar transfer switch be used in different solar systems? You can use these switches in different solar systems, as explained below. A grid-tie solar transfer switch is specifically used with a grid-tied solar power system. That means it allows your system to draw power from the grid when necessary, such as during bad weather.



A solar automatic transfer switch is an electrical device that detects when there is a power outage on the grid and automatically switches the power source to your solar panels. It also works in reverse, transferring the power source back to the grid when your solar panels are not producing enough energy.



I think what I would do, is setup 2 manual transfer switches. One between the utility, and inverter. The "constant" side of this switch, would be the grid connection. the 2 "selectable" sides.. one would be the AC input for the inverters, and the other would be to the other transfer switch.



Automatic Transfer System (ATS) can switch your power supply system between off grid and on grid when it senses circuit anomaly. It automatically switches to on grid power when the solar battery is running low to keep the system running.



An automatic transfer switch is a self-acting electrical device that switches between your primary and backup power source when the primary fails. Having an ATS installed with your solar-powered home ensures you get continuous power without the need to manually switch from solar to the grid or vice versa.

# CYPRUS AUTOMATIC TRANSFER SWITCH SOLAR TO GRID



MOES Smart Automatic Transfer Switch for Off Grid Solar Wind System  
Dual Power Controller 80A 8Kw Provides Automatic Power Switching  
Between Inverter and AC 110V, 220V, APP Remote Control with Hub. ???



SOLAR AUTOMATIC TRANSFER SWITCH. How does a solar transfer switch work? It features a 3-position switch: BYPASS, OFF, and ATS. The switch directly connects your house to the utility power in the BYPASS position. The ATS ???



Function. In automatic mode: the backup power must be city power and must be supplied all the time or our product can not transfer automatically. Main power can be solar PV power supply (such as inverter, PV energy storage power, battery). When city power and solar PV power is supplied at same time, the product will immediately switch to PV power for the load.



A Dual Power Automatic Transfer Switch (ATS) is an essential component in modern electrical systems, particularly for those incorporating renewable energy sources such as solar power. This device plays a pivotal ???

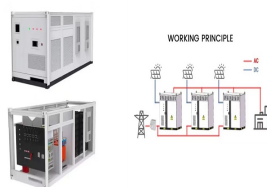


An Automatic Transfer Switch for Solar (ATS) is a device that changes between solar and grid electricity during outages or when the solar panel system is not producing enough power. It is a necessary component of a solar power system ???

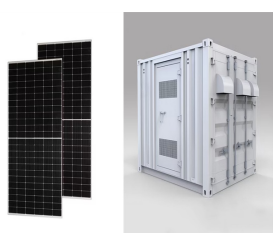
# CYPRUS AUTOMATIC TRANSFER SWITCH SOLAR TO GRID



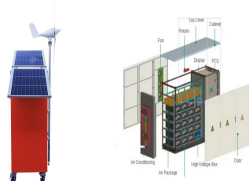
No more manual changeover switch or inconvenient extension leads, the Latronics High Speed AC Transfer Switch is a fool proof, hassle free solution for multiple power source systems. Fast input switching (transfer time of approx ???



Introducing the ATESS Automatic Transfer Switch (ATS) ATS-100, a state-of-the-art solution designed to enhance the reliability and continuity of your power supply. Engineered with precision and equipped with advanced features, the ATS-100 seamlessly manages the transition between power sources, ensuring uninterrupted electricity supply for critical applications.



An automatic transfer switch is most commonly used with auto start generators. Inverters are different in that the All-in-One units have built in transfer switches so the wiring is done differently. Typically the "certain circuits" you mentioned are moved to a critical loads subpanel and an AIO inverter is used to power the subpanel.



Dual Feed from Mains/Grid or Solar Inverter Supply the AC-Loads from a dual source, the operation is automatic or manual, the ATS will ensure that only one source will Decrease quantity for Automatic ATS Transfer Switch 63A 2 Pole Solar PV Inverters Increase quantity for Automatic ATS Transfer Switch 63A 2 Pole Solar PV Inverters. Subtotal



Here's the catch though. My solar system will be installed a a separate building from the house (with the pole/meter in between) which means I can't utilize the automatic transfer switch (ATS) of the inverter to prevent backfeeding of the grid during power outages while still supplying power to the house.

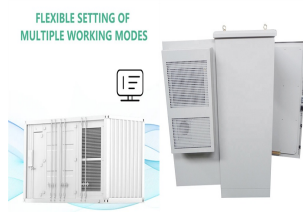
# CYPRUS AUTOMATIC TRANSFER SWITCH SOLAR TO GRID



Applications of Dual Power ATS. The Dual Power ATS can be used in various settings: Residential Solar Systems: Homeowners with solar installations can use an ATS to ensure their homes have continuous power ???



For off-grid systems, the transfer switch shifts between solar and other backup sources, such as a generator. Off-grid switches are essential in remote areas or RVs where there's no access to the grid. Dual Power Input Transfer Switch . A dual power input switch is perfect for setups where you might need more than one backup source. For example, you could have ???



Comprehensive comparative analysis of solar automatic transfer switches and traditional power systems. With the world's growing emphasis on renewable energy and the continuous advancement of technology, the solar automatic transfer switch has become a key and indispensable component of modern energy management systems.



Beneficial to Solar or Wind System: Comes with a new backup battery, plus many more powerful features for a dual solar-wind system. Works Like an Opposite Direction UPS: the ATS controller can switch freely between grid power and ???



Solark 15k DIY Grid Tie Design with 200A disconnect and Manual Bypass - all grounds and neutrals to main components include: Sol-Ark 15k Limitless AIO, 200 amp fused-disconnect, 200 amp 2-pole double throw manual bypass transfer switch, a wireway and polaris connectors to keep everything neat, EG4 LifePo batteries in a server rack, Silfab

# CYPRUS AUTOMATIC TRANSFER SWITCH SOLAR TO GRID



Thus, it gives owners a level of convenience compared to a manual transfer switch. But, whether automatic or manual, the high demand and easy access to generators means that the global market for transfer switches will continue to rise. It is valued at \$1.3 billion in 2023 and is expected to grow as a \$3.1 billion market by 2033. How Does an



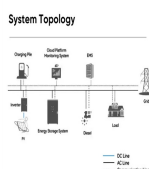
The primary power source is the Solar PV system and the Mains (Grid), is therefore the secondary. When solar production is low (below 200V), the system switches to the Grid until it detects



The ATS CONECT solar automatic transfer switch is designed for solar systems. It also features a true manual bypass switch. This ATS panel is designed for small private power systems with up to 6kW of continuous power. It works with or without storage batteries. The most common installation is directly before the supply point of your house.



Automatic Transfer Switch for Solar: Seamlessly transition between grid power and battery with MOES APP compatibility. Monitor electrical values and provide surge protection. Ideal for solar or wind systems with a manual switch for backup.



The Tigo 200A MCB Auto Transfer Switch (ATS) is essential for on-grid storage, sensing grid loss and switching safely to solar/battery power. Available in 50A and 200A models, it features 120Vac and 240Vac split phase output, a built-in transformer, and IP65 rating for both indoor and outdoor use. Warranty: 132 months.



# CYPRUS AUTOMATIC TRANSFER SWITCH SOLAR TO GRID



You generally need to put the grid+genset+ATS on the AC2 (grid/genset input) side of the SI. Now--It does depend on how the particular E-Panel is wired There can be an AC bypass switch setup that disconnects the SI from input/output AC loads and instead connects the Grid+genset+ATS directly to the protected AC loads.



Parameter . Rated Power:5.5kw(110V) or 11KW(220v) , Input Voltage: Auto distinguish:AC 100-120V or AC 220-240 Output Voltage: Auto distinguish:AC 100-120V or AC 220-240 Transfer time: Inverter transfer to public power ??? 10ms,Public power transfer to inverter ??? 16ms LCD ???



The Generac PWRcell 200 Amp Automatic Transfer Switch (ATS) model CXSW200A3 makes it easy to deliver whole home power with an integrated solar and storage system. Power the entire home and manage up to four individual HVAC (24 Vac controlled) loads with the PWRcell ATS. This built-in capability requires no additional hardware.



The transfer switch is mechanical and automatic and AFTER grid power is restored the transfer doesn't interrupt the computers or refrigerator we use. Oh, to clarify, our Solar system is off grid using 2 BB batteries in series that feed the inverter. I'm not trying to feed the grid. "Hope that helps.



Planning on using a Sol-Ark 12k. Inverter grid connection will come a tap after the meter but before the main panel. In this scenario the ATS would also be downstream from that meter tap, as the utility supply side. This way when the ATS switches it doesn't accidentally backfeed the inverter grid supply.

# CYPRUS AUTOMATIC TRANSFER SWITCH SOLAR TO GRID

---



Introducing the ATESS Automatic Transfer Switch (ATS) ATS-150, a state-of-the-art solution designed to enhance the reliability and continuity of your power supply. Engineered with precision and equipped with advanced features, the ATS-150 seamlessly manages the transition between power sources, ensuring uninterrupted electricity supply for critical applications.