

DIFFICULTIES OF FLYWHEEL ENERGY STORAGE



Could flywheels be the future of energy storage? Flywheels, one of the earliest forms of energy storage, could play a significant role in the transformation of the electrical power system into one that is fully sustainable yet low cost.



What is the most destructive flywheel energy storage system failure? Among them, the rupture of the flywheel rotor is undoubtedly the most destructive flywheel energy storage system failure. Therefore, in the design process of flywheel rotor, it is necessary to fully evaluate the operation safety of flywheel energy storage system based on the material, size, and speed of the rotor.



How much energy can a flywheel store? The small energy storage composite flywheel of American company Powerthu can operate at 53000 rpm and store 0.53 kWh of energy. The superconducting flywheel energy storage system developed by the Japan Railway Technology Research Institute has a rotational speed of 6000 rpm and a single unit energy storage capacity of 100 kWh.



Can a flywheel energy storage system be used in a rotating system? The application of flywheel energy storage systems in a rotating system comes with several challenges. As explained earlier, the rotor for such a flywheel should be built from a material with high specific strength in order to attain excellent specific energy.



What is a flywheel energy storage system (fess)? Flywheel Energy Storage Systems (FESS) play an important role in the energy storage business. Its ability to cycle and deliver high power, as well as, high power gradients makes them superior for storage applications such as frequency regulation, voltage support and power firming [,,].

DIFFICULTIES OF FLYWHEEL ENERGY STORAGE



What are the advantages of a flywheel versus a conventional energy storage system? When the flywheel is weighed up against conventional energy storage systems, it has many advantages, which include high power, availability of output directly in mechanical form, fewer environmental problems, and higher efficiency.



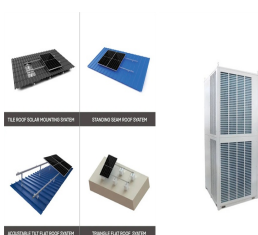
A novel form of kinetic energy storage, the flywheel is known for its fast response characteristics, and recent advances in bearing design have enabled high performance levels for short-term storage. UK, in 2002. However, due to technical difficulties in scaling up the technology, the facility was never fully commissioned. Applications like



The literature written in Chinese mainly and in English with a small amount is reviewed to obtain the overall status of flywheel energy storage technologies in China. The theoretical exploration of flywheel energy storage (FES) started in the 1980s in China. The experimental FES system and its components, such as the flywheel, motor/generator, bearing, ???



With the rise of new energy power generation, various energy storage methods have emerged, such as lithium battery energy storage, flywheel energy storage (FESS), supercapacitor, superconducting magnetic energy storage, etc. FESS has attracted worldwide attention due to its advantages of high energy storage density, fast charging and discharging ???



Flywheel Energy Storage Systems (FESS) work by storing energy in the form of kinetic energy within a rotating mass, known as a flywheel. Here's the working principle explained in simple way, Energy Storage: The system features a flywheel made from a carbon fiber composite, which is both durable and capable of storing a lot of energy.

DIFFICULTIES OF FLYWHEEL ENERGY STORAGE



The speed of the flywheel undergoes the state of charge, increasing during the energy storage stored and decreasing when discharges. A motor or generator (M/G) unit plays a crucial role in facilitating the conversion of energy between mechanical and electrical forms, thereby driving the rotation of the flywheel [74]. The coaxial connection of both the M/G and the flywheel signifies ???



One energy storage technology now arousing great interest is the flywheel energy storage systems (FESS), since this technology can offer many advantages as an energy storage solution over the



Flywheel Energy Storage Systems convert electricity into rotational kinetic energy stored in a spinning mass. The flywheel is enclosed in a cylinder and contains a large rotor inside a vacuum to reduce drag. While lithium-ion batteries are scaling quickly and falling in cost, they cannot yet address these kinds of problems because they



Today, flywheel energy storage systems are used for ride-through energy for a variety of demanding applications surpassing chemical batteries. The fluctuating nature of power problems on an unprotected solar installation can cause damage to the connected equipment, sensitive electronics such as computers and various appliances.



As a flexible power source, energy storage has many potential applications in renewable energy generation grid integration, power transmission and distribution, distributed generation, micro grid and ancillary services such as frequency regulation, etc. In this paper, the latest energy storage technology profile is analyzed and summarized, in terms of technology ???

DIFFICULTIES OF FLYWHEEL ENERGY STORAGE



An overview of system components for a flywheel energy storage system.

Fig. 2. A typical flywheel energy storage system [11], which includes a flywheel/rotor, an electric machine, bearings, and power electronics. Fig.

3. The Beacon Power Flywheel [12], which includes a composite rotor and an electric machine, is designed for frequency



Energy storage systems (ESSs) are the technologies that have driven our society to an extent where the management of the electrical network is easily feasible. The balance in supply-demand, stability, voltage and frequency lag control, and improvement in power quality are the ???



Pumped hydro energy storage (PHES) [16], thermal energy storage systems (TESS) [17], hydrogen energy storage system [18], battery energy storage system (BESS) [10, 19], super capacitors (SCs) [20], and flywheel energy storage system (FESS) [21] are considered the main parameters of the storage systems. PHES is limited by the environment, as it



The hybrid energy storage system consists of 1 MW FESS and 4 MW Lithium BESS. With flywheel energy storage and battery energy storage hybrid energy storage, In the area where the grid frequency is frequently disturbed, the flywheel energy storage device is frequently operated during the wind farm power output disturbing frequently.



Flywheel energy storage is another type of energy storage, just like lead acid, lithium ion, flow batteries etc. Unlike lithium-ion, flywheels store energy as kinetic energy through a rotor, which accelerates at a high speed and collects energy as rotational energy. When the flywheel slows down, it discharges energy back into the grid.

DIFFICULTIES OF FLYWHEEL ENERGY STORAGE



A review of energy storage types, applications and recent developments. S. Koochi-Fayegh, M.A. Rosen, in Journal of Energy Storage, 2020 2.4 Flywheel energy storage. Flywheel energy storage, also known as kinetic energy storage, is a form of mechanical energy storage that is a suitable to achieve the smooth operation of machines and to provide high power and energy ???



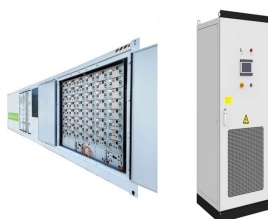
One of the difficulties with power plants IEEE Spectrum, December 24, 2014. The fall and rise of Beacon Power and its competitors in cutting-edge flywheel energy storage. Advancing the Flywheel for Energy Storage and Grid Regulation by Matthew L. Wald. The New York Times (Green Blog), January 25, 2010. Another brief look at Beacon Power's



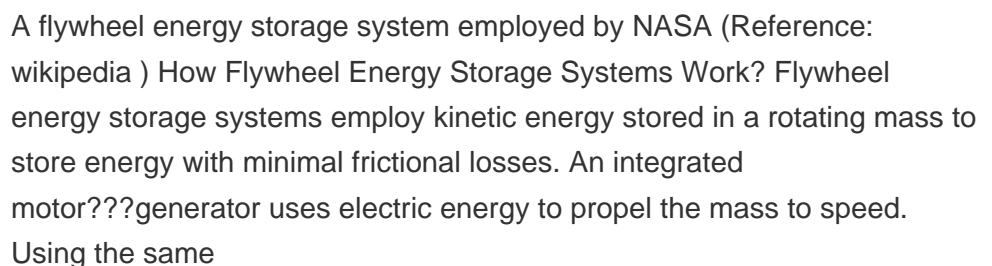
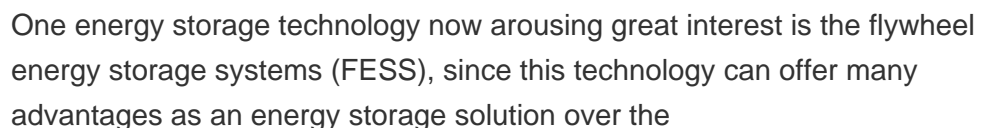
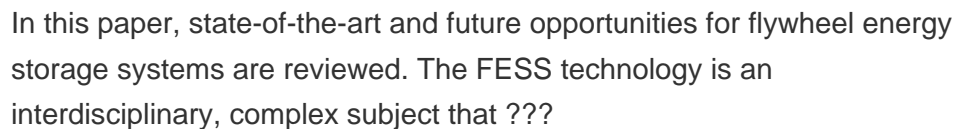
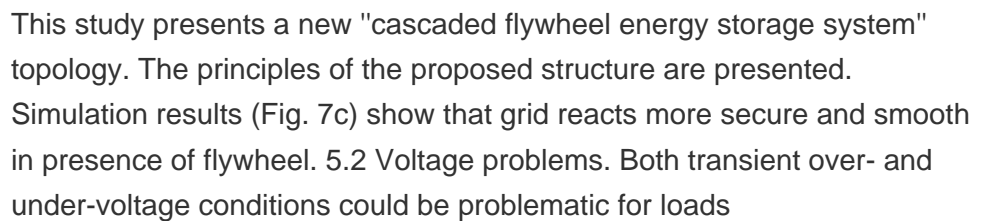
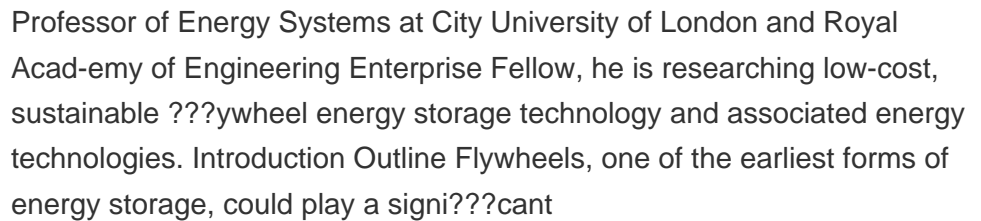
market deregulation, power quality problems, and pressures to limit carbon dioxide emissions [2,3]. Renewable energy sources (RES) and potential distributed generation (DG) are considered as Description of Flywheel Energy Storage System 2.1. Background The ???wheel as a means of energy storage has existed for thousands of years as one of



This concise treatise on electric flywheel energy storage describes the fundamentals underpinning the technology and system elements. Steel and composite rotors are compared, including geometric effects and not just specific strength. A simple method of costing is described based on separating out power and energy showing potential for low power cost ???



Flywheel Energy Storage System (FESS), as one of the popular ESSs, is a rapid response ESS and among early commercialized technologies to solve many problems in MGs and power systems [12]. This technology, as a clean power resource, has been applied in different applications because of its special characteristics such as high power density, no requirement ???



DIFFICULTIES OF FLYWHEEL ENERGY STORAGE



Despite their high energy density, these huge problems must be addressed before these systems can be put into practical use (Sharma and Bhatti 2010). In the next section among different metal???air batteries, two potential battery technologies are presented. (2012) Flywheel energy storage systems: review and simulation for an isolated wind



Lets check the pros and cons on flywheel energy storage and whether those apply to domestic use ():Compared with other ways to store electricity, FES systems have long lifetimes (lasting decades with little or no maintenance;[2] full-cycle lifetimes quoted for flywheels range from in excess of 10 5, up to 10 7, cycles of use),[5] high specific energy (100???130 ???



The current environmental problems are becoming more and more serious. In dense urban areas and areas with large populations, exhaust fumes from vehicles have become a major source of air pollution [1].According to a case study in Serbia, as the number of vehicles increased the emission of pollutants in the air increased accordingly, and research on energy ???



Energy is essential in our daily lives to increase human development, which leads to economic growth and productivity. In recent national development plans and policies, numerous nations have prioritized sustainable energy storage. To promote sustainable energy use, energy storage systems are being deployed to store excess energy generated from ???



The main components of a typical flywheel. A typical system consists of a flywheel supported by rolling-element bearing connected to a motor???generator.The flywheel and sometimes motor???generator may be enclosed in a vacuum chamber to reduce friction and energy loss.. First-generation flywheel energy-storage systems use a large steel

DIFFICULTIES OF FLYWHEEL ENERGY STORAGE



flywheel rotating on mechanical ???

DIFFICULTIES OF FLYWHEEL ENERGY STORAGE



A brief background: the underlying principle of the flywheel energy storage system???often called the FES system or FESS???is a long-established basic physics. Use the available energy to spin up a rotor wheel (gyro) via a motor/generator (M/G), which stores the energy in the rotating mass (Figure 1). Electronics is also required for the motor



Flywheel energy storage systems have gained increased popularity as a method of environmentally friendly energy storage. Fly wheels store energy in mechanical rotational energy to be then