

DIMENSIONS AND SPECIFICATIONS OF PHOTOVOLTAIC BRACKETS FOR DOMESTIC SALES



Many solar panel companies make small solar panels designed specifically for small roofs. You can also opt for high-efficiency solar panels that have conversion rates as high as 23% (compared to the industry average of ???)



6. Drive mechanism: This component, found in solar trackers, includes gears, motors, and controllers that drive the motion of the panels to follow the sun. 7. Electrical boxes and wiring conduits: These are used to house electrical ???



In this guide, we'll unpack solar panel size in greater detail, helping you determine how large of a system your property can accommodate before you purchase your panels. Average Solar Panel Dimensions. Standard residential solar panels measure 66 inches by 40 inches, or a little over 5 feet long and 3 feet wide.



Valsa's Roof mounting brackets and structures provide a solution for the installation of solar panels onto all types of roofs i.e. commercial, industrial, and domestic for the harvesting of photovoltaic power.



Metal rooftop mounting consists of two basic parts: the roof mounting hardware and the actual solar panel attachment interface. Choosing to go with a rail-based or rail-less installation method depends on a variety of factors. The PVKIT ???

DIMENSIONS AND SPECIFICATIONS OF PHOTOVOLTAIC BRACKETS FOR DOMESTIC SALES



As of 2024, these high-wattage solar panel components are among the most sought-after in the market due to their efficiency and capacity to support large-scale solar energy projects. Low-Power Solar Panels: Manufacturers focusing on low-power solar panels, suitable for solar street lights and small, portable solar systems, are plentiful in Guangdong province.



Solar panel size can refer to the power it produces (measured in watts) and its physical dimensions. Nevertheless, the typical size of a residential solar panel in the UK is 250W to 450W. It's important to note that when considering solar panels for your home or business, ???



NEW! 410Wp Solar Panel. Larger than Marley's 335Wp panel, the new 410 Solar Photovoltaic Panel delivers a peak power of 410Wp to increase total power from a roof area, whilst allowing for the installation of fewer solar panels to achieve the desired power output.



Solar PV roof panels are a great way to utilise flat roof space. Producing 310 watt-peak per panel and installed to ensure roof system integrity. writing the specification for the flat roof solution, and recommend suitable approved ???



Sale price R 1,194 95 incl. VAT R 1,194.95 incl. VAT Regular price R 1,494 00 incl. VAT R 1,494.00 incl. VAT Save R 299.05 Domestic Heat Pumps; Industrial Heat Pumps; Pool Heat Pumps; Solar Geysers Expand submenu. ???

DIMENSIONS AND SPECIFICATIONS OF PHOTOVOLTAIC BRACKETS FOR DOMESTIC SALES



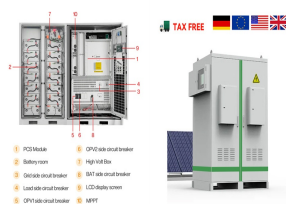
Renewable Energy Ready Home SOLAR PHOTOVOLTAIC SPECIFICATION, CHECKLIST AND GUIDE i. Table of Contents. code and solar energy professionals when planning a project to avoid issues that may impact the future the average size of a grid-tied PV residential system installation in the United States has increased to just over 5.0 kilowatts. DC.



Technical Specifications Solar Panel Bracket Pole Mount. Fits onto a 50mm pole. Maximum panel size: Up to 100W Module. Dimensions: 90 cm x 65 cm x 32cm. Weight: 4,4kg. Please note, this product is made to order with a 3 day lead ???



Short Upright 26? 520mm-60Cells-PV Panel at Portrait: BRA250SU0640:
Short Upright 31? -640mm-60Cells-PV Panel at Portrait: BRA250SU0748:
Short Upright 35? -748mm-60Cells-PV Panel at Portrait: BRA250SU0895:
Short Upright 40? -895mm-60Cells-PV Panel at Portrait: BRA300SU0125:
Short Upright 5?-125mm-72Cells-PV Panel at Portrait: BRA300SU0250



Its main business includes various photovoltaic fixed ground mounting structure, distributed mounting structure, tracking photovoltaic mounting structure, building mounting structure, and distributed power station development, etc. It is one of the largest professional manufacturers of photovoltaic brackets in China and the Asia-Pacific region.

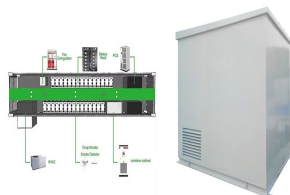


Domestic Solar PV Scheme The Domestic Solar PV Scheme operates under the Microgeneration Support Scheme (MSS) and provides a grant towards the purchase and installation of a solar PV system for homeowners. This takes the form of a once-off payment to a homeowner based on the installation of products which meet the requirements of the Scheme.

DIMENSIONS AND SPECIFICATIONS OF PHOTOVOLTAIC BRACKETS FOR DOMESTIC SALES



Discover Solfit's innovative roof-integrated solar panels designed for both domestic and commercial applications. Our patented interlocking design ensures a watertight seal without the need for plastic trays or complicated flashing systems. Perfect for seamless installations and elegant aesthetics.



Photovoltaic Bracket -Nanjing Chinylion Metal Products Co., Ltd.-Photovoltaic bracket is mainly applicable to distributed power stations, rooftop power stations, household, commercial and other fields in the solar photovoltaic industry Size is as below. 200 x 50 x 20 x 2.0~2.5mm 250 x 60 x 20 x 2.0~3.0mm 300 x 60 x 20 x 2.0~3.0mm 250 x 50 x



Specifically, the flexible photovoltaic bracket can be customized according to the shape and size of the roof, and is suitable for various types of roofs, such as flat roofs, pitched roofs, corrugated roofs, etc.; at the same time, it can also be adjusted according to the unevenness of the ground, suitable for various types of ground, such as deserts, mountains, grasslands, etc.; in addition



Slate tile solar panel brackets or otherwise known as (PV roof brackets) with fixings are now available in box quantities discounts. TRADE SALE box of 25, Bracket fixing screws. RELATED PRODUCTS We provide a comprehensive list spare parts up to complete domestic battery storage product kits, that provide energy for 230v grid connect

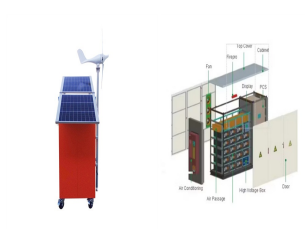


After-sales Service. size, specifications Panel material and thickness Coated Glass,2.5mm Back material and thickness Glass,2.5mm EVA peel strength (panel / back) N/cm2 ???60 Component outlet cable type specifications PV1-F 1x4.0mm2 Matching connector model specifications PV-JM601/PV-ZH202 Does the battery module require grounding YES

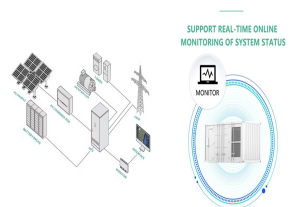
DIMENSIONS AND SPECIFICATIONS OF PHOTOVOLTAIC BRACKETS FOR DOMESTIC SALES



Equipment included within range, solar photovoltaic slate brackets in stainless steel. Pan tile, plain tile, concrete tile, Marley, slates and rafter sets with rails to match any solar PV panel roof attachments. Plus T bolts, M10 nuts, mid and end clamps in black and silver anodized finish to match your any size solar panel.



Solar Installers remove tiles temporarily and fix brackets to the roof. The rails then fix to the brackets. Solar roof bracket fixed to roof. Solar roof bracket and rail. Panels being fastened to rails on-roof. If you have a solar panel system installed using standing seam clamps, it's a good idea to get them checked periodically for



Solar panel kits for homes and business with next day delivery or "click and collect". Solar PV systems, accessories and batteries for sale to commercial and residential customers across the UK. Best prices and service guaranteed. ???



Ground Mounted Solar Panels. SolarTherm UK offer domestic ground mount to commercial sized standalone Solar PV systems. We class commercial as 25kWp and above as ordinarily we would be on to a 3-phase supply and require lots more ground, most homes are usually satisfied with systems up to 25kWp although of course there are exceptions.

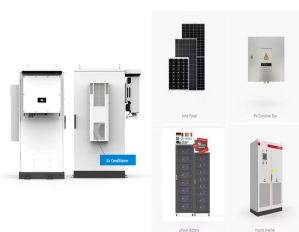


Some common solar panel system sizes include a 3kW solar panel system, a 4 kilowatt solar panel system and a 5kW solar panels. For instance, a typical 2kW solar panel system suited for 1-3 people will need ???

DIMENSIONS AND SPECIFICATIONS OF PHOTOVOLTAIC BRACKETS FOR DOMESTIC SALES



Standard panel dimension 1200mm x 600mm x 7.1mm, but available in any bespoke shape and size up to 3m. Full range of colour laminates or coatings available on request. Efficiency from 12% or 118Wp/m². PS-MC-ST series - Semi Transparent Monocrystalline Silicon (c-Si) photovoltaic technology. All Black square silicon cells embedded in a



The average domestic solar panel outputs 250-400 watts, with physical dimensions around 1.7m in length and 1m in width, weighing 18-20kg. Proper sizing is crucial for efficiency and meeting energy goals.



The standard solar panel size used in most residential households are either the 60-cell or 72-cell options. This is because the larger 96-cell panels are often too big to be installed on residential properties. travelling around various countries Jack increasingly came across various forms of solar from large solar farms to domestic solar

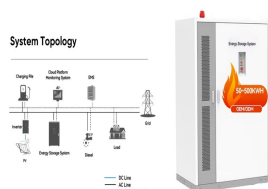


Find all of your Ghost Controls automatic gate opener Mounting Specifications and Dimensions here. 10 Watt Solar Panel. AX30. 30 Watt Solar Panel. AXS1. 3-Button Standard Remote Transmitter. 3 inch Round Post Adapter Bracket. Product AX3R. 4 inch Round Post Adapter Bracket. Product AX4R.



A set of Balcony Solar Bracket is equipped with 1 pcs solar panel, and the width of the Balcony Solar Bracket can be freely adjusted according to the size of the solar panel. Detail Drawing. Download. Product manual sales@3kmpower ; 0755-26788013; Address? 1/4 ?502, Block B, Building T3, Shenzhen Software Park, Yuehai Street, Nanshan

DIMENSIONS AND SPECIFICATIONS OF PHOTOVOLTAIC BRACKETS FOR DOMESTIC SALES



The Top of Pole Mount is one of the different types of PV panel mounting brackets, commonly used in solar panel installations. This type of mounting bracket is designed to be installed on top of a pole, providing a high vantage point for the solar panels. Hostinger's Black Friday sale has already started and you can save up to 90% on web