

DIRECTIONS OF INDUCTIVE ENERGY STORAGE AND RELEASE



What is the theoretical basis for energy storage in inductors? The theoretical basis for energy storage in inductors is founded on the principles of electromagnetism, particularly Faraday's law of electromagnetic induction, which states that a changing magnetic field induces an electromotive force (EMF) in a nearby conductor.



How do inductors store energy? In conclusion, inductors store energy in their magnetic fields, with the amount of energy dependent on the inductance and the square of the current flowing through them. The formula $W = \frac{1}{2} L I^2$ encapsulates this dependency, highlighting the substantial influence of current on energy storage.



How do you find the energy stored in an inductor? The energy, stored within this magnetic field, is released back into the circuit when the current ceases. The energy stored in an inductor can be quantified by the formula $W = \frac{1}{2} L I^2$, where W is the energy in joules, L is the inductance in henries, and I is the current in amperes.



What is the rate of energy storage in a Magnetic Inductor? Thus, the power delivered to the inductor $p = v \cdot i$ is also zero, which means that the rate of energy storage is zero as well. Therefore, the energy is only stored inside the inductor before its current reaches its maximum steady-state value, I_m . After the current becomes constant, the energy within the magnetic becomes constant as well.



What happens when an inductive circuit is completed? When an inductive circuit is completed, the inductor begins storing energy in its magnetic fields. When the same circuit is broken, the energy in the magnetic field is quickly reconverted into electrical energy. This electrical energy appears as a high voltage around the circuit breakpoint, causing shock and arcs.

DIRECTIONS OF INDUCTIVE ENERGY STORAGE AND RELEASE



What are some common hazards related to the energy stored in inductors? Some common hazards related to the energy stored in inductors are as follows: When an inductive circuit is completed, the inductor begins storing energy in its magnetic fields. When the same circuit is broken, the energy in the magnetic field is quickly reconverted into electrical energy.



CubeSats are becoming increasingly prevalent in space missions because of their simplicity, economy, and reliability [1, 2]. However, because of limitations on volume and mass, ???



Inductance Value: Measured in henries (H), this value reflects the energy storage capability of the component. This magnetic energy storage property makes inductors essential for a range of ???



Currently, pulsed adders are used as pulsed voltage sources maturely. However, their use as pulsed current sources is significantly limited due to circuit impedance and the characteristics of power devices. This paper ???

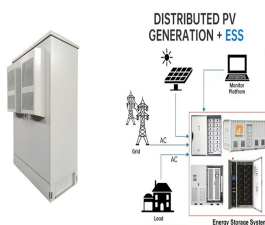


The ability to release stored energy rapidly makes inductive energy storage crucial for applications requiring quick bursts of power, such as in renewable energy integration or emergency power ???

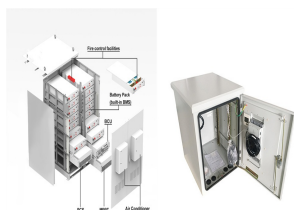
DIRECTIONS OF INDUCTIVE ENERGY STORAGE AND RELEASE



Whenever electrons flow through a conductor, a magnetic field will develop around that conductor. This effect is called electromagnetism.. Magnetic fields affect the alignment of electrons in an atom, and can cause physical ???



It's the timing of this energy storage and release within the mains cycle that controls the sign of the convention for reactive power. because formula $S = UI^*$ gives the real power and reactive power both as positive when ???



Inductors, essential components in electronic circuits, store energy in the magnetic field created by the electric current flowing through their coiled wire. This energy storage is dynamic, with the magnetic field's intensity changing in ???



Figure 4 shows (a) the circuit diagram and (b) the typical output voltage of the inductive energy storage system pulsed power generator used to drive non-thermal plasma reactors. The electrical



The inductor uses a magnetic field to store energy. When current flows through an inductor, a magnetic field builds up around it, and energy is stored in this field. The energy is released when the magnetic field collapses, ???