

DISCHARGE BATTERY ENERGY STORAGE BATTERY



What is a battery energy storage system? A battery energy storage system (BESS) is an electrochemical device that charges (or collects energy) from the grid or a power plant and then discharges that energy at a later time to provide electricity or other grid services when needed.



What is a battery energy storage system (BESS)? Battery Energy Storage Systems (BESS) are pivotal technologies for sustainable and efficient energy solutions.



What are the parameters of a battery energy storage system? Several important parameters describe the behaviors of battery energy storage systems. Capacity[Ah]: The amount of electric charge the system can deliver to the connected load while maintaining acceptable voltage.



What happens when a battery is discharged? When the battery is being discharged, the transfer of electrons shifts the substances into a more energetically favorable state as the stored energy is released. (The ball is set free and allowed to roll down the hill.) At the core of a flow battery are two large tanks that hold liquid electrolytes, one positive and the other negative.



What is battery storage & why is it important? Battery storage is one of several technology options that can enhance power system flexibility and enable high levels of renewable energy integration.

DISCHARGE BATTERY ENERGY STORAGE BATTERY



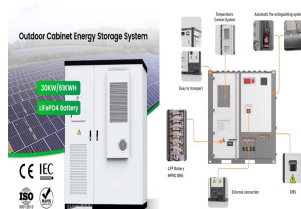
Do solar batteries store energy for later use? At the highest level, solar batteries store energy for later use. If you have a home solar panel system, there are a few general steps to understand: Energy storage: A battery is a type of energy storage system, but not all forms of energy storage are batteries.



Battery energy storage systems (BESSs) provide significant potential to maximize the energy efficiency of a distribution network and the benefits of different stakeholders. This can be achieved through optimizing placement, sizing, charge/discharge scheduling, and control, all of which contribute to enhancing the overall performance of the

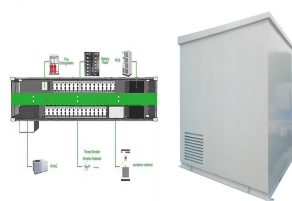


It's generally not recommended to discharge your battery entirely, as doing so could harm the system. To protect against this, many manufacturers specify a maximum depth of discharge, or DoD, which measures the amount of electricity you can safely pull from the battery without damaging it, relative to its overall capacity.. For example, if a 10 kWh battery has a ???



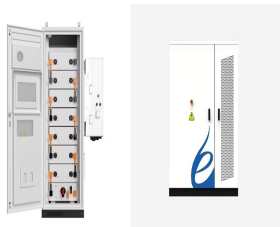
Additionally, deploying batteries in power systems and managing grid-tied battery energy storage systems introduce complexities [26,30,31,32,33].

2.2. Pumped Hydroenergy Storage (PHES) particularly in scenarios where extended periods of energy storage without discharge are prevalent.



batteries for utility energy storage: A review Geoffrey J. Maya^{a,*}, Alistair Davidson^b, Boris Monahov^c aFocus Consulting, Swithland, Loughborough, UK Lead???acid battery principles The overall discharge reaction in a lead???acid battery is: $PbO_2 + 2H_2SO_4 \rightarrow PbSO_4 + 2H_2O$ (1) The

DISCHARGE BATTERY ENERGY STORAGE BATTERY



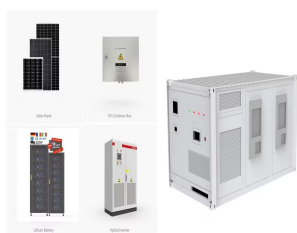
Purpose of review This paper reviews optimization models for integrating battery energy storage systems into the unit commitment problem in the day-ahead market. Recent Findings Recent papers have proposed to use battery energy storage systems to help with load balancing, increase system resilience, and support energy reserves. Although power system ???



How to size your storage battery pack : calculation of Capacity, C-rating (or C-rate), ampere, and runtime for battery bank or storage system (lithium, Alkaline, LiPo, Li-ION, Nimh or Lead batteries Generally, for a given capacity you will have less energy if you discharge in one hour than if you discharge in 20 hours, reversely you will



Not only are lithium-ion batteries widely used for consumer electronics and electric vehicles, but they also account for over 80% of the more than 190 gigawatt-hours (GWh) of battery energy storage deployed globally through 2023. However, energy storage for a 100% renewable grid brings in many new challenges that cannot be met by existing battery technologies alone.

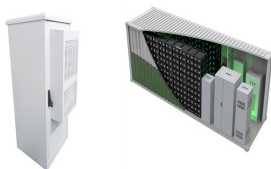


Safety of Electrochemical Energy Storage Devices. Lithium-ion (Li-ion) batteries represent the leading electrochemical energy storage technology. At the end of 2018, the United States had 862 MW/1236 MWh of grid- scale battery storage, with Li-ion batteries representing over 90% of operating capacity [1]. Li-ion batteries currently dominate



Batteries, the power source for devices, have an often overlooked characteristic ??? self-discharge. Whether it's the AA batteries in your remote control or the lithium-ion battery pack, all batteries lose their charge over time, even when they're not in use. This phenomenon known as self-discharge can significantly affect the performance and lifespan of your batteries.

DISCHARGE BATTERY ENERGY STORAGE BATTERY



| Supplementing a solar array with a battery storage system is becoming an increasingly widespread practice for many homeowners, and for good reason. Batteries extend the availability of solar power through the night and during surprise power outages. They can also accelerate the solar rate of return depending on your utility's rate policies (i.e., time-of-use) by ???



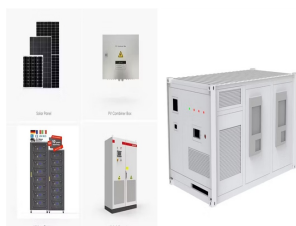
Flow batteries: Design and operation. A flow battery contains two substances that undergo electrochemical reactions in which electrons are transferred from one to the other. When the battery is being charged, the transfer of electrons forces the two substances into a state that's "less energetically favorable" as it stores extra energy.



Due to urbanization and the rapid growth of population, carbon emission is increasing, which leads to climate change and global warming. With an increased level of fossil fuel burning and scarcity of fossil fuel, the power industry is moving to alternative energy resources such as photovoltaic power (PV), wind power (WP), and battery energy-storage ???



Battery Energy Storage Systems (BESS) have become a cornerstone technology in the pursuit of sustainable and efficient energy solutions. BESS primarily functions on direct current (DC) because batteries inherently store and discharge energy in DC. Inverters are used to integrate BESS with the alternating current (AC) systems prevalent in

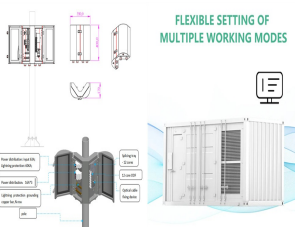


The lead acid battery has been a dominant device in large-scale energy storage systems since its invention in 1859. It has been the most successful commercialized aqueous electrochemical energy storage system ever since. In addition, this type of battery has witnessed the emergence and development of modern electricity-powered society. Nevertheless, lead acid batteries ???

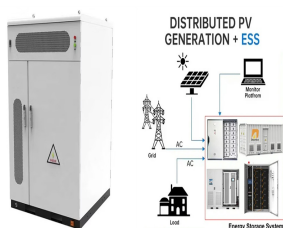
DISCHARGE BATTERY ENERGY STORAGE BATTERY



The average lead battery made today contains more than 80% recycled materials, and almost all of the lead recovered in the recycling process is used to make new lead batteries. For energy storage applications the battery needs to have a long cycle life both in deep cycle and shallow cycle applications.



This date is often clearly marked on the packaging or the battery itself. Battery Self-Discharge Rate. Self-discharge is the process where a battery loses its charge over time, even when not in use. The rate of self-discharge varies based on the battery's chemistry, brand, storage environment, and temperature. Battery Shelf Life



Unlike traditional power plants, renewable energy from solar panels or wind turbines needs storage solutions, such as BESSs to become reliable energy sources and provide power on demand [1]. The lithium-ion battery, which is used as a promising component of BESS [2] that are intended to store and release energy, has a high energy density and a long energy ???



Battery discharge curves are based on battery polarization that occurs during discharge. The amount of energy that a battery can supply, corresponding to the area under the discharge curve, is strongly related to operating conditions such as the C-rate and operating temperature. During discharge, batteries experience a drop in V_t .



PDF | Energy storage has become a fundamental component in renewable energy systems, especially those including batteries. It is designed to compensate for the self-discharge of the battery

DISCHARGE BATTERY ENERGY STORAGE BATTERY



9. Self-Discharge of Battery Storage Systems. Batteries can self-discharge, which is a common but unwanted phenomenon in energy storage technologies [219, 220]. It can only be slowed down by inhibiting the reaction kinetics of its many steps, or their respective rates of reaction, because it is driven in all of its forms by the same



In Fig. 2 it is noted that pumped storage is the most dominant technology used accounting for about 90.3% of the storage capacity, followed by EES. By the end of 2020, the cumulative installed capacity of EES had reached 14.2 GW. The lithium-iron battery accounts for 92% of EES, followed by NaS battery at 3.6%, lead battery which accounts for about 3.5%, ???



This chapter provides an overview of energy storage technologies besides what is commonly referred to as batteries, namely, pumped hydro storage, compressed air energy storage, flywheel storage, flow batteries, and power-to-X ???

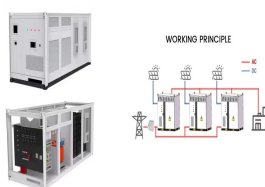


BESS provides a host of valuable services, both for renewable energy and for the grid as a whole. The ability of utility-scale batteries to nimbly draw energy from the grid during certain periods and discharge it to the grid at other periods creates opportunities for electricity dispatch optimization strategies based on system or economic conditions.



Depth of Discharge. In many types of batteries, the full energy stored in the battery cannot be withdrawn (in other words, the battery cannot be fully discharged) without causing serious, and often irreparable damage to the battery. The Depth of Discharge (DOD) of a battery determines the fraction of power that can be withdrawn from the battery.

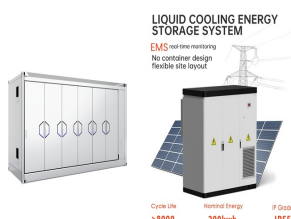
DISCHARGE BATTERY ENERGY STORAGE BATTERY



There are different energy storage solutions available today, but lithium-ion batteries are currently the technology of choice due to their cost-effectiveness and high efficiency. Battery Energy Storage Systems, or BESS, are rechargeable batteries that can store energy from different sources and discharge it when needed.



Special Report on Battery Storage 5 2 Battery storage market participation . 2.1 Battery resource modeling In the ISO market, storage resources participate under the non-generator resource (NGR) model. NGRs are resources that operate as either generation or load (demand), and bid into the market using a single



An energy battery, also known as a high-energy battery, is a rechargeable battery designed to store and release energy over an extended period. These batteries are optimized to provide sustained power output, making them ideal for applications requiring long-lasting energy storage and usage. Primary functions: Store energy for extended periods.



2.1ackable Value Streams for Battery Energy Storage System Projects S 17 2.2 ADB Economic Analysis Framework 18 2.3 Expected Drop in Lithium-Ion Cell Prices over the Next Few Years (\$/kWh) 19 2.4eakdown of Battery Cost, 2015???2020 Br 20 2.5 Benchmark Capital Costs for a 1 MW/1 MWh Utility-Sale Energy Storage System Project 20



3.1 Battery energy storage. The battery energy storage is considered as the oldest and most mature storage system which stores electrical energy in the form of chemical energy [47, 48]. A BES consists of number of individual cells connected in series and parallel [49]. Each cell has cathode and anode with an electrolyte [50].