

DJIBOUTI CITY PORT ENERGY STORAGE



Does Djibouti have a good economy? Djibouti's economy has performed well in recent years: GDP growth reached 6.5 per cent in 2015/16, and two major infrastructure projects have been completed: the new container port at Doraleh, which opened in 2009, and the railway that connects Djibouti City and its ports to Ethiopia, which opened in 2017.



Why is Djibouti a good port? Since 1998, the Port handled 100% of Ethiopia's maritime traffic, which moves to and from Addis Ababa by truck and rail. To accommodate this important business, the Port has made many additional dry yard areas available. The Port of Djibouti is ideally located to serve the COMESA market, linking 19 countries and 380 million peoples.



What is the current state of electricity in Djibouti? Electricity sector: Current state: Djibouti's electricity supply is based on: (R) Thermal generation (diesel and heavy fuel oil): 20-40%. (R) Hydroelectric imports from Ethiopia (since 2011): 60-80%. o The country's current energy production is 220 MW, broken down as follows: (R) Public generation of 120 MW by EdD



Why is Djibouti important? Djibouti's two commercial ports drive much of the country's economic activity. Strategically located on the Red Sea, they serve Djibouti, Ethiopia and other countries in North and East Africa.



Why did Djibouti need a new generator? In 2007, the Government approached the Islamic Development Bank (IsDB) for assistance with a project to replace an old diesel generator at the Boulaos power plant in Djibouti City with a newer model, having recognized that sustaining economic growth would require a larger, more reliable source of power generation.

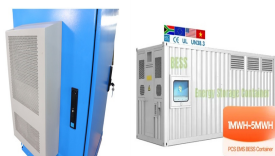
DJIBOUTI CITY PORT ENERGY STORAGE



How many people live in Djibouti? Djibouti in figures ???Independence:27 June 1977 ???Surface area:23,200 km? ???Population: 905,618(2017) ???Capital: Djibouti-Population: 70% (650 000 hab) ???GDP growth:7.1% (2017) ???GDP per capita: USD 1930 (2017) ???Poverty rate:40%.



Wholly owned by Djibouti Ports and Free Zones Authority (DPFZA), GHIH was established in 2016 with a fixed capital of 15 billion Djiboutian Francs (\$85 million USD). Energy. Djibouti is planning to meet 100% of its power demands with ???



Storage facilities. Djibouti port has many public and private warehouses covering 135645 m2. Vehicle storage and coal storage facilities are available in zone PK11 consisting of 6 warehouses and a livestock shed. The multipurpose port of ???



In Djibouti City, it is impossible to ignore the omnipresence of port infrastructure. In the heart of the capital, near the historic port, a brand-new floating dock immediately catches ???



Djibouti, or Djibouti City, serves as the capital and largest city of the Republic of Djibouti, a small country located in the Horn of Africa. This dynamic city functions as the central hub of the nation, reflecting its ???



Djibouti has a sub-tropical desert climate. It is hot and arid. The capital, Djibouti city, is one of the warmest and driest cities in the world. Average temperatures here range from 23°C in winter to 42°C in mid-summer. The country receives ???

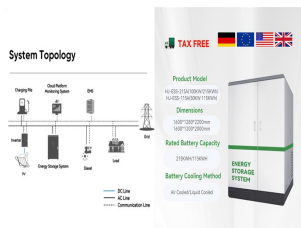
DJIBOUTI CITY PORT ENERGY STORAGE



Port electrification can generate a variety of benefits for ports and near-port communities and help address climate change. Those who live and work near ports are impacted inequitably by diesel exhaust, particulate matter, and ???



Renewable Energy developer CWP Global has signed an MoU with the Government of the Republic of Djibouti to create a 10GW renewable energy and green hydrogen hub. The project will go a long way towards realising the ???



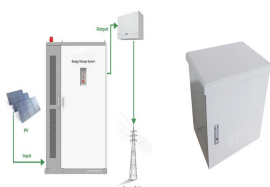
Djibouti City, DJIBOUTI: a 3.5 Minute Video . Part of a new series of videos edited down to 3.5 minutes to show the highlights. Join me on this whistle-stop tour of Djibouti City, located on the ???



Djibouti Ports and free zones authority is the regulator of Djibouti ports, free-zones and related transport professions. It also invests through its subsidiary GHIH (Great horn investment Holding) in major infrastructure ???



The future Djibouti Damerjog Industrial Development Free Trade Zone (DDIDFTZ), 30 km south-east of the capital, is currently being built at a cost of over \$1 billion. By 2035, this industrial port site will house fuel storage ???



2. Ports as Energy Platforms. At the global level, about 40% of all the cargo handled by ports is energy-related, which is massive and carried in bulk. Conventionally, ports played a strategic role as energy platforms, ???

DJIBOUTI CITY PORT ENERGY STORAGE



It spans over 40 ha in Djibouti City and includes integrated office space, warehouses, light industrial units and hangars. The Port of Djibouti ranked first overall in sub-Saharan Africa ???