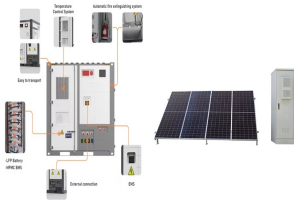
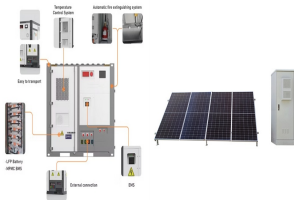


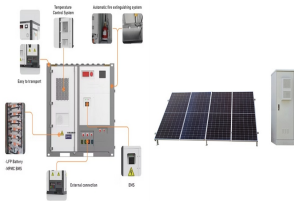
# DOES FLYWHEEL ENERGY STORAGE HAVE HIGH ENERGY DENSITY



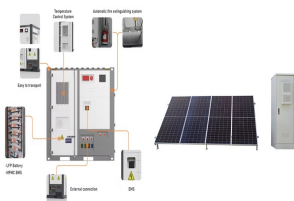
Is flywheel a good form of energy storage? Flywheel is proving to be an ideal form of energy storage on account of its high efficiency, long cycle life, wide operating temperature range, freedom from depth-of-discharge effects, and higher power and energy density??? on both a mass and a volume basis ,,,.



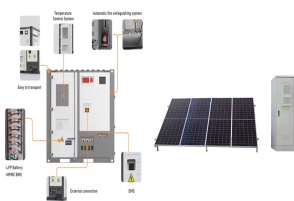
What are the advantages of flywheel ESS (fess)? Flywheel energy storage systems (FESS) have several advantages, including being eco-friendly, storing energy up to megajoules (MJ), high power density, longer life cycle, higher rate of charge and discharge cycle, and greater efficiency.



Are flywheel batteries a good option for solar energy storage? However, the high cost of purchase and maintenance of solar batteries has been a major hindrance. Flywheel energy storage systems are suitable and economical when frequent charge and discharge cycles are required. Furthermore, flywheel batteries have high power density and a low environmental footprint.



What is a flywheel/kinetic energy storage system (fess)? A flywheel/kinetic energy storage system (FESS) is a type of energy storage system that uses a spinning rotor to store energy. Thanks to its unique advantages such as long life cycles, high power density, minimal environmental impact, and high power quality such as fast response and voltage stability, FESS is gaining attention recently.

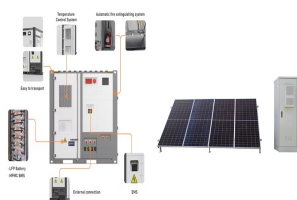


What makes flywheel energy storage systems competitive? Flywheel Energy Storage Systems (FESSs) are still competitive for applications that need frequent charge/discharge at a large number of cycles. Flywheels also have the least environmental impact amongst the three technologies, since it contains no chemicals.

# DOES FLYWHEEL ENERGY STORAGE HAVE HIGH ENERGY DENSITY



Are flywheels a good investment? Flywheels boast several qualities that make them handy for various applications: They have a high power density, meaning they can release a lot of energy in a small space. They also have a high energy density, packing a punch in terms of the amount of energy they can store.



This mismatch between supply and demand necessitates effective energy storage solutions. While batteries have been the traditional method, flywheel energy storage systems (FESS) are emerging as an innovative and ???



What Is a Flywheel Energy Storage System? A flywheel energy storage system is a mechanical device used to store energy through rotational motion. When excess electricity is available, it is used to accelerate a flywheel ???



The attractive attributes of a flywheel are quick response, high efficiency, longer lifetime, high charging and discharging capacity, high cycle life, high power and energy density, and lower impact on the environment. 51, 61, ???



The flywheel energy storage system (FESS) offers a fast dynamic response, high power and energy densities, high efficiency, good reliability, long lifetime and low maintenance requirements, and is

# DOES FLYWHEEL ENERGY STORAGE HAVE HIGH ENERGY DENSITY



The flywheel energy storage operating principle has many parallels with conventional battery-based energy storage. The flywheel goes through three stages during an operational cycle, like all types of energy storage systems: ???



High power density; High energy density; Lifetime independent of charge depth or discharge cycle; Low maintenance; Short recharge time; Independent of temperature due to a vacuum environment; Environmentally friendly materials ???



Flywheel energy storage systems (FESSs) have been investigated in many industrial applications, ranging from conventional industries to renewables, for stationary emergency energy supply and for the delivery of ???



Battery energy storage is another popular system that uses chemical energy to store electricity. It is a highly efficient system with a low discharge rate but limited storage capacity and high costs. Flywheel energy ???