

DOES SOLAR POWER GENERATION HAVE AN ON OFF SWITCH



Do solar lights have an ON/OFF switch? The stored energy in these batteries powers the lights, making them an efficient and environmentally friendly lighting option. The presence of an On/Off Switch on solar lights allows users to control when the lights are activated, giving them flexibility and control over their outdoor lighting.



Why is the ON-OFF switch on solar lights important? The on-off switch on solar lights is crucial. It lets you control energy use and lighting times, boosting efficiency and security. It's like holding the power to customize your light setup for the best performance. Plus, it can help save energy and extend battery life.



When should a solar light switch be turned off? Only when you're not going to be using your solar lights for a while or packing them away for a trip should you flip the switch to the off position. The on/off switch should be left in the on position for optimal solar lighting performance and consistent light.



Do solar lights turn on and off automatically? Solar lights have an on/off switch, so you can manually turn them on and off when needed. Solar lights turn on and off automatically with the help of a light sensor, but you might be in a case where you need to turn it on during the day or turn it off during the night if you are traveling for a long period.



How does a solar light switch work? The solar light switch gives users control over the activation and deactivation of the lights, impacting energy efficiency and battery life. By utilizing the switch to turn off the lights when not needed, users can enhance energy efficiency and prolong the battery life of the solar lights.

DOES SOLAR POWER GENERATION HAVE AN ON OFF SWITCH



Why should you use a solar light switch? Furthermore, the switch acts as a way to prevent premature activation during daylight hours. By using the switch on your solar lights, you can manage energy consumption effectively and extend the battery life of the light.



This design ensures that solar lights are user-friendly, offering a practical solution for outdoor lighting without the need for complex wiring or external power sources. Why Do Solar Lights Have an On-Off Switch? Utility ???



Managing the on/off switch of solar lights can help control energy consumption, preserve battery life, and ensure efficient charging. Overall, proper maintenance of the solar panel, strategic positioning in direct sunlight, and smart energy management through the on/off switch are key practices to maximize the charging capabilities of solar lights.



Works With A Timer: Use solar power then switch back to AC power 50/50 to give your overall solar power system a break without running on battery all the time. No More Unplugging - Just turn off the inverter, and everything switch to primary AC power connected to the grid without unplugging or reconfigure bunch of other cords. Specs:



Power Generation [edit] Now that you have access to an Electronics Center, you can start handling power. But of course, you have to start somewhere. A common mistake is to wire Solar Panel to On/Off Switch (if you do that, then the battery wouldn't work during the night). Example with the Power Relay and several machines:

DOES SOLAR POWER GENERATION HAVE AN ON OFF SWITCH



Solar lights have an on/off switch so users can control the lighting output and conserve energy when the lights are not needed. This feature allows for customization, enabling users to adjust the lighting duration and brightness ???



Why is there an on-off switch on solar lights? The following four reasons. Although solar lights come on and off automatically, there are at least four situations in which it makes sense to switch them off. (This isn't true of every model.) 1. There are moments when you just want to be in the dark.



Should solar light switch be on or off? If you've got a solar light with an on/off switch, your switch needs to be ON while in use. When storing, not using, or preserving battery life, you can turn your solar light switch to OFF.



Discover why solar lights have an on-off switch. Learn how it benefits users, conserves energy, and enhances security. Find out more in this informative article. When the solar lights are not in use or during daylight hours, the on/off switch allows you to conserve solar power by turning off the lights. This helps to maximize the efficiency



Correctly configured, a grid-tie inverter allows a home owner to use an alternative power generation system such as solar or wind energy, but without rewiring or batteries. In this situation, a grid-tie inverter, which is actually an AC inverter, allows the solar power generated by the solar panels to convert into useable AC power.

DOES SOLAR POWER GENERATION HAVE AN ON OFF SWITCH



Many new users do not realize that their solar lights have an on/off switch that needs to turn on. The light is- turned off while they are in the package- you have to turn it on after unpacking. If you plan to set them in a ???



Pairing power optimizers with a string inverter (as with SolarEdge) should do the trick. However, power optimizers aren't your only option for rapid shutdown compliance ??? as more states began adopting NEC 2017, many string inverter manufacturers or other solar companies built new MLPE technologies with rapid shutdown capabilities.



Solar generators can offer campers lots of comfort when they are out to satisfy their quest for adventure in the outdoors. You can use the solar generator to power many tools, including tablets, laptops, ???



A solar automatic transfer switch is a type of self-acting switch that is specifically designed for use with a solar power system. Solar ATS are typically installed so they connect to the grid, ???

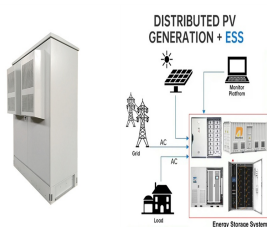


While it is important to know about peak hours, there is another term to know when it comes to solar power and electricity generation: off-peak electricity hours. The simple definition of off-peak hours is "the opposite of ???

DOES SOLAR POWER GENERATION HAVE AN ON OFF SWITCH



Understanding Solar Lights with On/Off Switch. Solar lights with on/off switches offer users the ability to manually manage their illumination. In addition, it is a feature helpful in conserving battery power and dictating ???



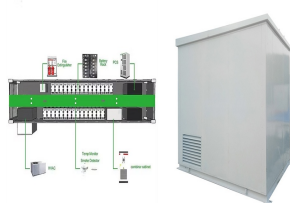
Solar iBoost+ is designed for use with up to 2 immersion heaters each rated up to 3kW for water heating in the home, each immersion is used in turn by the Solar iBoost+.. The immersions must have thermostat controls but no electronic controls between the Solar iBoost+ and the immersion. Take care not to connect any devices with any electronic controls as these and the Solar ???



Across Australia, solar power is becoming more commonplace, as consumers and businesses looking to make the shift to more sustainable energy solutions. From providing eco-friendly benefits to the environment, ???

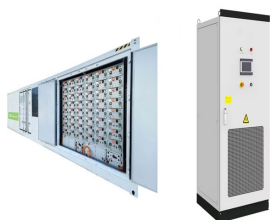


I am in the process of creating plans for a large scale RV solar installation. It will be a 48V system, and with that comes some caveats of having the added difficulty of finding 48V nominal rated components. (Although I do have a fuse) The inverters do have an on/off switch on the case to power on or off the inverter function. Would it be



Probably already discussed this in another post, but to recap an ideal setup has a shutoff switch between the panels and controller (to turn off solar, or "PV") and then a resettable circuit breaker between the controller and battery (to protect the circuit, due to practically unconstrained battery power source, and make it easy to turn off the controller).

DOES SOLAR POWER GENERATION HAVE AN ON OFF SWITCH



Do All Solar Lights Have an On/Off Switch? Not all solar lights have an on/off switch. If your solar light has an on/off switch, ensure that it is set to the On position. If it is difficult to determine whether the switch is on or off, simulating night-time by covering the panel should make it obvious.



Some Extra Tips to Charge Solar Lights With on/off Switch 1 . Do Not Place Solar Lights in Shadow Areas. When it comes to charging your solar lights, it's important to ensure that they are placed in direct sunlight and away from shadows. This will ensure that enough energy is absorbed by the battery and can be used to power up your outdoor



The primary purpose of these solar disconnect switches is so that you can shut off the incoming flow of power from your solar panels. Here is what a typical solar panel system looks like and where to find the disconnects: NEC Article 690.13 requires every PV system in the country to have a solar switch,



Some solar lights have a ON/OFF switch. It does have certain advantages. But does not mean its an essential for all solar lights. Further, he is also the author of two books on Solar Technology, "Solar Power for Villages" and "DIY Solar System for Dummies". Categories Solar Light, Installation and maintenance.



Shading, if not considered, can be a solar panel system's worse nightmare. According to some experts, homeowners could be losing as much as 40 per cent of their potential solar generation due to shade. This is because, as a shadow is cast over a panel, the amount of sunlight reaching the surface is reduced.

DOES SOLAR POWER GENERATION HAVE AN ON OFF SWITCH



The solar system is easy to set up and wire to your batteries. It just takes a little electrical know-how to get the system set up in a safe manner. That means adding a kill switch. Do I need a solar disconnect switch? It is a ???



You don't have to focus solely on solar lights with ON/OFF switch. The truth is that all solar lights have the same function, which is to brighten up the indoor or outdoor parts of your home. While there are plenty of models on the market that boast impressive specifications, it's important to understand how solar lights perform in the real world.



Your inverter may have a switch marked Inverter Isolator. If it does, flick this switch to the off position. If you cannot locate this switch on your inverter, skip this step. Your solar PV system should now be completely switched off. All lights and screen displays will be dead. Keep the system off for a minimum of five minutes. Step 5



If a solar light does not have a switch, it means the device turn on and off automatically. Do All Solar Lights Have an On/Off Switch? As pointed out above, not all solar lights come with an on/off switch. If yours does not, it will turn on and off automatically. On the one hand that is ???



Solax eps changeover switch, Tesla Powerwall & Givenergy Gateway Systems. So a few words about this great Solar Energy system that has a fantastic benefit, with a built in change over switch for critical circuits in home, it will allow for the power to ???

DOES SOLAR POWER GENERATION HAVE AN ON OFF SWITCH



To ensure that your homes and offices have power throughout, you must have a source of backup power, like generators with automatic changeover switches. What is an automatic changeover switch? An automatic changeover switch, also known as an automatic transfer switch, is used in generators that automatically transfer power from a main source to ???