

# DOES THE PHOTOVOLTAIC PANEL INSTALLATION INCLUDE A BRACKET



Reduced upfront costs: Solar panel grants lower the initial investment required for solar panels, making renewable energy more accessible to a wider range of households.; Enhanced return on investment: By ???



The innovation behind specialty mounts does more than expand the physical possibilities for solar panel installation; it makes solar energy accessible and applicable in diverse settings. By tailoring solutions to meet specific challenges, specialty mounts push the boundaries of what's possible in solar energy deployment. 8. Choosing the Right



These include the photovoltaic (PV) modules or solar panels, mounting hardware and racking systems for attaching the solar array to your roof or ground, AC/DC disconnects for safely isolating the PV system from electrical power sources, wiring for connecting components together, junction boxes for accommodating multiple conductors within a single enclosure, ???



PV panels mounted on roof Workers install residential rooftop solar panels. The solar array of a PV system can be mounted on rooftops, generally with a few inches gap and parallel to the surface of the roof.If the rooftop is horizontal, the array is mounted with each panel aligned at an angle. If the panels are planned to be mounted before the construction of the roof, the roof can ???



1. Inclined structures: They are the most common way to incorporate solar panels usually occurs on flat surfaces and provides the height and inclination the photovoltaic modules need. 2. Coplanar structures: They ???

# DOES THE PHOTOVOLTAIC PANEL INSTALLATION INCLUDE A BRACKET



Case Study: solar panel installation for an average UK home ??? House type: Semi-detached ??? Solar panels: polycrystalline 4kW ??? Number of panels: 10-14 ??? Solar panel cost, including installation: £7000.00 (Actual price ranges from £5,000 to £9,000) ??? Estimated annual output: 3600 kWh (South of the UK) ??? Estimated Smart Export Guarantee Tariff: £50.00 (SEG ???)



Mounting Hardware: Standard mounting hardware includes rails, brackets and more to securely install the panels onto the roof. Installers often install with off-the-shelf mounting hardware that isn't designed around ease of installation. During most installations, mounting rails are secured to the roof planes and solar panels are attached to



Keep lowering until the mounting rail holes and brackets are in alignment. The solar panel has to be flattened completely. Secure the flattened solar panel with the wing nuts and knob bolts. Method 2: Install Solar Panel RV Corner Bracket Mounts. The following is a general guide for solar panel corner bracket mount installation.



5 ? Here's a guide that will help you know everything essential about the PV panel mounting brackets or solar panel brackets- necessities, benefits, types, material components, and probable solar systems, essential few things to ???



Deciding to install a solar system is only the first step. Solar panel installation constitutes a substantial project with significant financial implications, entailing numerous subsequent decisions.. This article explores ???

# DOES THE PHOTOVOLTAIC PANEL INSTALLATION INCLUDE A BRACKET



Types of Solar Panels Brackets. There are different types available, including railless brackets, and top-of-pole mounts, the specific type of bracket or clamp chosen depends on factors such as the dimensions of the solar panel, installation method, and desired mounting angle for optimal exposure to sunlight.



The installation selection of photovoltaic ground brackets is mainly based on factors such as the fixing method of the bracket, terrain requirements, material selection, and the weather resistance, strength, and stiffness of the bracket. First, there are many fixing methods, such as pile foundation method (direct burial method), concrete block weight method, pre-embedded method, ground ???



Use our solar panel buying advice and see our solar panel brand reviews to help make your decision. What is the best angle and roof direction for solar panels? The table below shows the percentage of the maximum output you will get from a solar PV system, depending on your roof orientation (west, south, east) and tilt angle (source: the Energy Saving Trust).



2. Attach the Fixing Bracket to the Solar Panel. Once you've gathered all the tools and followed up on permits and safety requirements, it's time to set up your mounting system. The first step is to attach the fixing bracket to the solar panel. Lay the solar panel face-down on the tarp or canvas to protect the photovoltaic surface.



Are you wondering how much a new solar panel installation may cost in the UK? Use our calculator below to get an estimate. The solar panel cost calculator below will help you determine how much energy you can save, as well as the financial rewards you could potentially earn by installing a solar panel array on your property.

# DOES THE PHOTOVOLTAIC PANEL INSTALLATION INCLUDE A BRACKET



3. Types of Solar Panel Mounts. Different types of solar panel mounts cater to various installation requirements and environmental conditions. If you understand the different types of mounting, you can choose the most suitable mount for a specific solar project. Fixed Mounts: The Basics



Installation: The physical installation of your solar panel system can vary in complexity, but it generally involves mounting the panels on your roof, installing an inverter, and setting up the connection to your home's electrical ???



Elevation - the optimal elevation for a photovoltaic installation is 40° from horizontal. This has been calculated to give you the maximum exposure during all seasons i.e. the low sun in winter and the high sun in summer. Most standard pitched roofs are around 35°. Tracking systems are available which move the panels to track the Sun throughout the day to give you the best ???



Common issues that you may encounter with your solar panel installation include poor performance, damaged panels, faulty wiring, or malfunctioning inverters. Troubleshooting tips include checking for obstructions blocking sunlight from reaching your panels, examining the wiring for loose connections or damage, and monitoring the output of ???



Retrofitted roof panels Solar PV panels can be retrofitted onto an existing roof, on top of the tiles or other roofing materials, using roof anchors (also called roof-hooks or brackets), mounting rails and clamps. Mounting rails are usually made of aluminium (due to its lightness) and other components from aluminium or stainless steel.

# DOES THE PHOTOVOLTAIC PANEL INSTALLATION INCLUDE A BRACKET



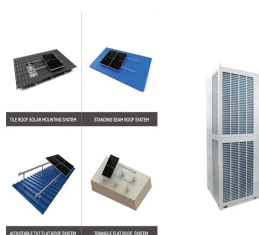
Solar panel brackets. Solar panel inverter. Solar panel brackets. Installation i.e. labour costs of the installer. Cost of the solar battery storage system (although this is optional). Short answer: the average UK cost of a new solar install sits at around ?5,300. How much is a single solar panel in the UK? The average cost of a solar panel in



Solar Panel Bracket Mounting Systems. Stainless Steel Roof Hooks for Solar Panels. Adjustable and Welded Bracket systems for mounting solar panel collector frames with nut and bolt. Material: Stainless Steel SS304. Application: Solar Mounting, Tile Roof, Sloped Flat Roof. Fully Hot Dip Galvanized to EN ISO 1461 2009.



How to install solar panels wiring . Solar panel wiring installation is not overly complicated if you understand basic electricity procedures. First, there is a positive wire and a grounding wire. Most solar components have a ???



. These Standards cover flat-plate PV modules and panels intended for installation on buildings or those intended to be freestanding. To satisfy the Listing for this product the modules must be mounted with a rack or standoff structure. The Listing does not include integration into a building surface because additional requirements may apply.

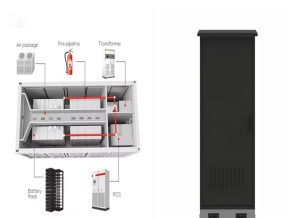


Shop the Solar Panel Z Type Mounting Brackets - 2 Sets at our store. Easy to install, our Solar Panel Z Type Mounting Brackets are compatible with most solar panels and can be adjusted to the perfect angle for maximum sun exposure. Affiliate programs and affiliations include, but are not limited to, the eBay Partner Network, Walmart

# DOES THE PHOTOVOLTAIC PANEL INSTALLATION INCLUDE A BRACKET



2. Attach the Fixing Bracket to the Solar Panel. Once you've gathered all the tools and followed up on permits and safety requirements, it's time to set up your mounting system. The first step is to attach the fixing bracket to the solar panel. Lay the solar panel face-down on the tarp or canvas to protect the photovoltaic surface.



This is the most comprehensive solar panel mounting video article, including videos of various mounting brackets. For example, how to use the balcony to install solar panels. This includes iron sheet/ground roof solar panel bracket installation, tile/slate roof solar panel bracket installation, aluminum ground bracket installation, concrete/sand installation bracket, etc. At the end of the



How much do solar panels cost to install? Can I get a solar panel grant? How much will I save with a solar panel system? How long will it take for solar panels to pay for themselves? What are the best ways to use ???



Final Thoughts. Performing your own DIY solar panel installation is an empowering step towards energy independence and sustainability. Throughout our guide, we've explored the essentials of planning, the importance of choosing the right tools and materials, and the detailed steps to install your system safely.



When deciding on a solar panel installation system for a rooftop, it's important to examine the roof's material and condition, and the concrete blocks used. After measuring and planning the system, purchase all the necessary equipment to mount and install the solar panels. This includes mounting brackets, clamps, screws, nuts, bolts