

# DOES THE POWER STATION HAVE ENERGY STORAGE



What is a battery energy storage system? A battery energy storage system (BESS) is an electrochemical device that charges (or collects energy) from the grid or a power plant and then discharges that energy at a later time to provide electricity or other grid services when needed.



Can a grid energy storage system store energy? Yes, residential grid energy storage systems, like home batteries, can store energy from rooftop solar panels or the grid when rates are low and provide power during peak hours or outages, enhancing sustainability and savings. Grid energy storage is discussed in this article from HowStuffWorks. Learn about grid energy storage.



When is electricity stored? Electrical energy is stored during times when electricity is plentiful and inexpensive (especially from variable renewable energy sources such as wind power and solar power) or when demand is low, and later returned to the grid when demand is high, and electricity prices tend to be higher.



What is energy storage? Energy storage involves converting energy from forms that are difficult to store to more conveniently or economically storable forms. Some technologies provide short-term energy storage, while others can endure for much longer. Bulk energy storage is currently dominated by hydroelectric dams, both conventional as well as pumped.



What is a battery storage power plant? Battery storage power plants and uninterruptible power supplies (UPS) are comparable in technology and function. However, battery storage power plants are larger. For safety and security, the actual batteries are housed in their own structures, like warehouses or containers.

# DOES THE POWER STATION HAVE ENERGY STORAGE



How many battery energy storage projects are there? The U.S. has 575 operational battery energy storage projects 8, using lead-acid, lithium-ion, nickel-based, sodium-based, and flow batteries 10. These projects totaled 15.9 GW of rated power in 2023 8, and have round-trip efficiencies between 60-95% 24.



"The first gas plant knocked offline by storage may only run for a couple of hours, one or two times per year," explains Jenkins. "But the 10th or 20th gas plant might run 12 or 16 hours at a stretch, and that requires deploying a large energy storage capacity for batteries to reliably replace gas capacity."



The Fengning Pumped Storage Power Station is the one of largest of its kind in the world, with twelve 300 MW reversible turbines, 40-60 GWh of energy storage and 11 hours of energy storage, their reservoirs are roughly comparable in size to about 20,000 to 40,000 Olympic swimming pools.



Powerwall gives you the ability to store energy for later use and works with solar to provide key energy security and financial benefits. Each Powerwall system is equipped with energy monitoring, metering and smart controls for owner customization using the Tesla app. The system learns and adapts to your energy use over time and receives over-the-air updates to add new a?]



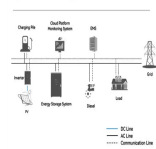
The operating principle of a battery energy storage system (BESS) is straightforward. Batteries receive electricity from the power grid, straight from the power station, or from a renewable energy source like solar panels or other energy source, and subsequently store it as current to then release it when it is needed.

# DOES THE POWER STATION HAVE ENERGY STORAGE



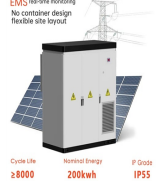
On November 16, Fujian GW-level Ningde Xiapu Energy Storage Power Station (Phase I) of State Grid Times successfully transmitted power. The project is mainly invested by State Grid Integrated Energy and CATL, which is the largest single grid-side standalone station-type electrochemical energy storage power station in China so far.

System Topology



Pumped storage is a method of keeping water in reserve for peak period power demands by pumping water that has already flowed through the turbines back up a storage pool above the power plant at a time when customer demand for energy is low, such as during the middle of the night.

LIQUID COOLING ENERGY STORAGE SYSTEM



Pumped-storage hydroelectricity (PSH), or pumped hydroelectric energy storage (PHES), is a type of hydroelectric energy storage used by electric power systems for load balancing. A PSH system stores energy in the form of gravitational potential energy of water, pumped from a lower elevation reservoir to a higher elevation. Low-cost surplus off-peak electric power is typically a?



How Does a Portable Power Station Work? Portable power stations convert and store energy from a wall outlet at home, a car adaptor when you're on the go, or by connecting EcoFlow Solar Panels to harness clean, renewable energy from the sun. Different models have different-sized batteries and energy storage capacities, affecting how long



For example, on June 16, when a nuclear power plant tripped offline, Shaw said that Plus Power sent energy stored in Angleton to the grid to help make up the difference and prevent an imbalance of

# DOES THE POWER STATION HAVE ENERGY STORAGE



A portable power station, also known as a portable battery pack or a portable power supply, is a self-contained unit that stores electrical energy and can be used to power electronic devices. Unlike a traditional generator, which uses a combustion engine to produce electricity, a porta



BESS solutions can accelerate decentralised power station infrastructure which can add value to commercial and utility-scale power generation models; For example, a battery with 1MW of power capacity and 6MWh of usable energy capacity will have a storage duration of six hours. Depth of Discharge (DoD) Depth of Discharge (DoD) expresses the



Aerial view of Moss Landing Power Plant One of the stacks for units 6 and 7. The Moss Landing Power Plant is a natural gas powered electricity generation plant located in Moss Landing, California, United States, at the midpoint of Monterey Bay s large stacks are landmarks, visible throughout the Monterey Bay Area. The plant is owned and operated by Houston-based a?]



The Tesla Megapack is a large-scale rechargeable lithium-ion battery stationary energy storage product, intended for use at battery storage power stations, manufactured by Tesla Energy, the energy subsidiary of Tesla, Inc.. Launched in 2019, a Megapack can store up to 3.9 megawatt-hours (MWh) of electricity. Each Megapack is a container of similar size to an intermodal a?]



After solid growth in 2022, battery energy storage investment is expected to hit another record high and exceed USD 35 billion in 2023, based on the existing pipeline of projects and new capacity targets set by governments. power plant retrofits, smart grid measures and other technologies that raise overall flexibility. In liberalised

# DOES THE POWER STATION HAVE ENERGY STORAGE



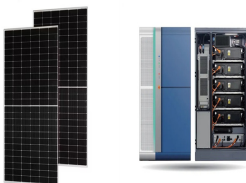
The pumped storage power station (PSPS) is a special power source that has flexible operation modes and multiple functions. With the rapid economic development in China, the energy demand and the peak-valley load difference of the power grid are continuing to increase. As a result, the PSPS is currently the most mature and practical way for



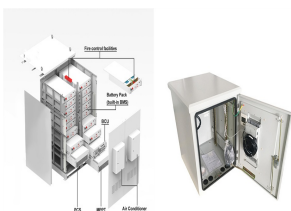
Drax Power Station has a long, proud history of playing a central role in producing the UK's electricity. It is already the home of the largest decarbonisation project in Europe and is now the site of innovation for bioenergy with carbon capture and storage (BECCS), a negative emissions technology essential for fighting the climate crisis.. Drax Power Station has evolved a?]



Old School Waterpower Primes Clean Energy Future Our blueprint to serve customers reliable energy with net zero carbon emissions by 2040, the Clean Energy Plan, is made possible by a 50-year-old hydroelectric plant nestled on the shores of Lake Michigan. The Ludington Pumped Storage Plant, co-owned by Consumers Energy (51%) and DTE Electric (49%), is a key a?]

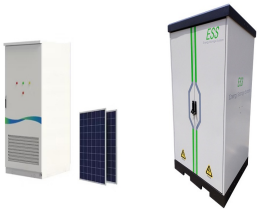


A run-of-river hydroelectric power station that is downstream of a large dam takes advantage of storage in that dam to reduce dependence on day-to-day rainfall. then storage energy and power of about 500 TWh and 20 TW will be needed, which is more than an order of magnitude larger than at present, but much smaller than the available off



In addition, several other supplementary components are necessary for this integration, including storage and processing capabilities for hydrogen. Chen et al. [29] suggested implementing battery energy storage along with a nuclear power plant (NPP) in order to solve the problem of grid stability. An economic analysis was performed to determine

# DOES THE POWER STATION HAVE ENERGY STORAGE



The MITEI report shows that energy storage makes deep decarbonization of reliable electric power systems affordable. "Fossil fuel power plant operators have traditionally responded to demand for electricity a?? in any given moment a?? by adjusting the supply of electricity flowing into the grid," says MITEI Director Robert Armstrong, the Chevron Professor a?|



Battery storage, or battery energy storage systems (BESS), are devices that enable energy from renewables, like solar and wind, to be stored and then released when the power is needed most.. Lithium-ion batteries, which are used in mobile phones and electric cars, are currently the dominant storage technology for large scale plants to help electricity grids a?|



Pumped storage hydropower (PSH) is a type of hydroelectric energy storage. It is a configuration of two water reservoirs at different elevations that can generate power as water moves down from one to the other (discharge), passing through a turbine.



Different energy and power capacities of storage can be used to manage different tasks. Short-term storage that lasts just a few minutes will ensure a solar plant operates smoothly during output fluctuations due to passing clouds, while longer-term storage can help provide supply over days or weeks when solar energy production is low or during



Energy storage is key to secure constant renewable energy supply to power systems a?? even when the sun does not shine, and the wind does not blow. Energy storage provides a solution to achieve flexibility, enhance grid reliability and power quality, and accommodate the scale-up of renewable energy. But most of the energy storage systems a?|



# DOES THE POWER STATION HAVE ENERGY STORAGE



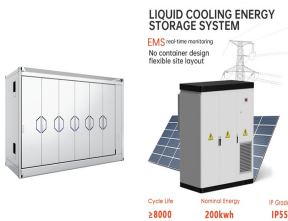
The advantages of PSH are: Grid Buffering: Pumped storage hydropower excels in energy storage, acting as a crucial buffer for the grid. It adeptly manages the variability of other renewable sources like solar and wind power, storing excess energy when demand is low and releasing it during peak times.



Our study finds that energy storage can help VRE-dominated electricity systems balance electricity supply and demand while maintaining reliability in a cost-effective manner a?]



HOW DOES PUMPED STORAGE HYDROPOWER WORK? Pumped storage hydropower (PSH) is one of the most-common and well-established types of energy storage technologies and currently accounts for 96% of all utility-scale energy storage capacity in the United States. PSH facilities store and generate electricity by moving water between two reservoirs at different a?]



A residential battery energy storage system can provide a family home with stored solar power or emergency backup when needed. Commercial Battery Energy Storage. Commercial energy storage systems are larger, typically from 30 kWh to 2000 kWh, and used in businesses, municipalities, multi-unit dwellings, or other commercial buildings and



Numerous energy storage technologies (pumped-storage hydroelectricity, electric battery, flow battery, flywheel energy storage, supercapacitor etc.) are suitable for grid-scale applications, however their characteristics differ. For example, a a?]

# DOES THE POWER STATION HAVE ENERGY STORAGE



Electrical Energy Storage (EES) refers to systems that store electricity in a form that can be converted back into electrical energy when needed. 1 Batteries are one of the most common forms of electrical energy storage. The first battery??called Volta's cella??was developed in 1800. 2 The first U.S. large-scale energy storage facility was the Rocky River Pumped Storage plant in a?]